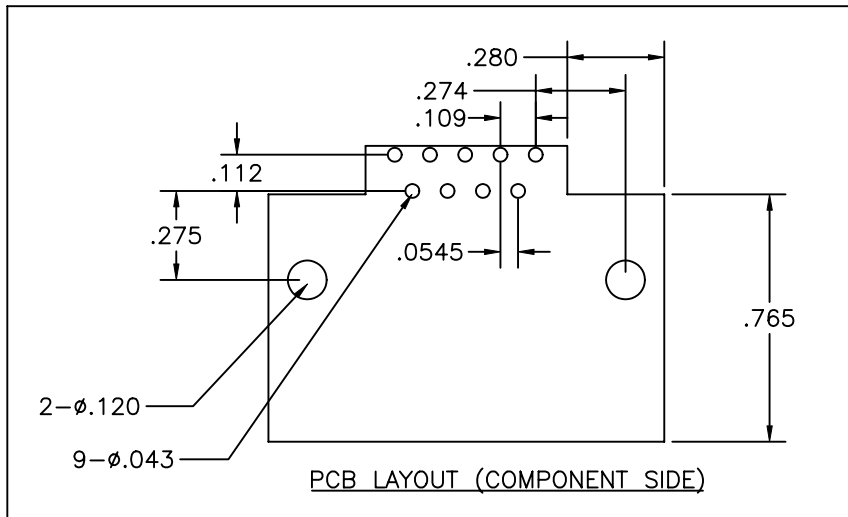
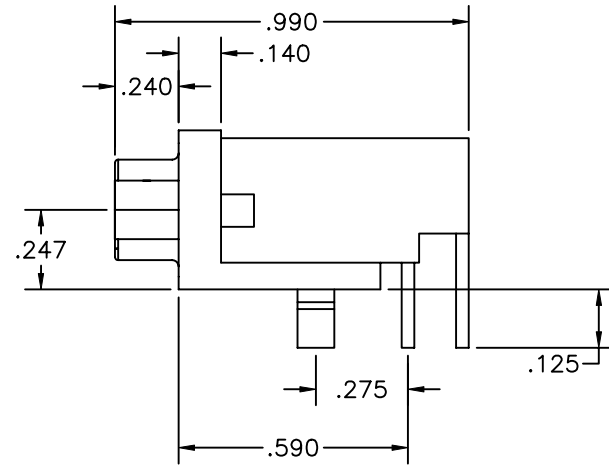
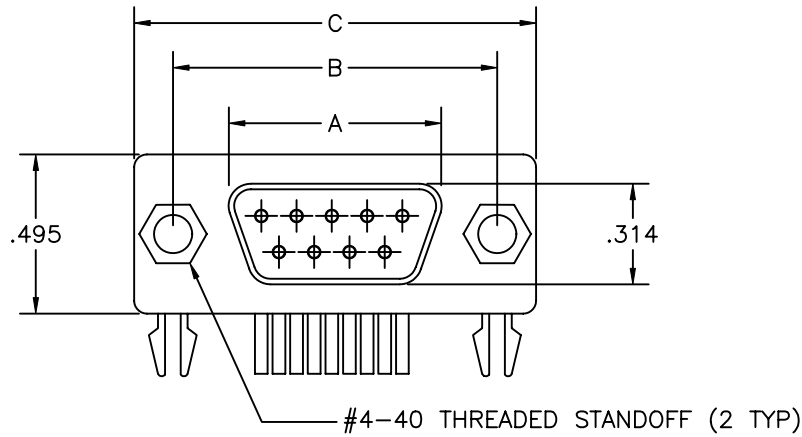


1 | 2 | 3 | 4 | 5

COMPONENT SPECIFICATION

USE OR REPRODUCTION OF THIS DRAWING FOR THE PURPOSE OF MANUFACTURING THIS ARTICLE OR ANY ARTICLES SHOWN FOR ANY PURPOSE IS STRICTLY PROHIBITED WITHOUT WRITTEN PERMISSION FROM SENIOR INDUSTRIES, INC.



X	A	B	C
9	0.643 [16.33]	0.984 [24.99]	1.213 [30.81]
15	0.971 [24.66]	1.312 [33.32]	1.541 [39.14]
25	1.511 [38.38]	1.852 [47.04]	2.088 [53.04]
37	2.159 [54.84]	2.500 [63.50]	2.729 [69.32]



SENIOR INDUSTRIES, INC.

DESIGNED:			SYM.	DATE:	DESCRIPTION OF REVISIONS:	DRAWN:	APPD:
DRAWN:	RB	09/14/01	▲	09.14.01	NEW	RB	TF
CHECKED:	GAT	06/12/06	▲	06.07.06	New Index. PN corr as Std.'X' options added	GAT	JF
APPROVED:	JF	06/12/06	▲	.			
			▲	.			
3RD ANGLE		UNIT:	mm	SCALE:	2:1	REV:	B

TOLERANCE:	PART NO:	SI-DSUB-210-X
TO 2 DECIMAL PLACE: ±	TITLE:	D-SUB CONNECTOR (FEMALE)
TO 3 DECIMAL PLACES: ±.015	SHEET:	1 OF 2
AS ANGLES: ±1/2°		

1

2

3

4

5

COMPONENT SPECIFICATION

USE OR REPRODUCTION OF THIS DRAWING FOR THE PURPOSE OF MANUFACTURING THIS ARTICLE OR ANY ARTICLES SHOWN FOR ANY PURPOSE IS STRICTLY PROHIBITED WITHOUT WRITTEN PERMISSION FROM SENIOR INDUSTRIES, INC.

SPECIFICATIONS

ELECTRICAL:

CONTACT RATING: 5A AT 600 VDC
 CONTACT RESISTANCE: 10 MILLIOHMS AT 5A
 INSULATION RESISTANCE: 5000 MEGOHMS MIN.
 DIELECTRIC STRENGTH: 1000 VRMS FOR 1 MINUTE

MECHANICAL:

MATERIAL:

INSULATOR: PBT, GLASS FILLED, UL94V-0
 CONTACT: BRASS, 30 MICROINCHES GOLD OVER
 50 MICROINCHES NICKEL.
 TAIL: BRASS, 100 MICROINCHES TIN
 OVER 50 MICROINCHES NICKEL.
 SHELL: STEEL, NICKEL PLATED

ENVIRONMENTAL:

OPERATING TEMPERATURE RANGE: -55°C TO 125°C



SENIOR INDUSTRIES, INC.

DESIGNED:			SYM.	DATE:	DESCRIPTION OF REVISIONS:	DRAWN:	APPD:	TOLERANCE:	PART NO:	SI-DSUB-210-X
DRAWN:	RB	09/14/01	▲	09.14.01	NEW	RB	TF			
CHECKED:	GAT	06/12/06	▲	06.07.06	New Index. PN corr as Std.'X' options added	GAT	JF	TO 2 DECIMAL PLACE: ±	TITLE:	D-SUB CONNECTOR (FEMALE)
APPROVED:	JF	06/12/06	▲	.	.			TO 3 DECIMAL PLACES: ±		
3RD ANGLE			UNIT:	mm	SCALE:	REV:	B	AS ANGLES: ±	SHEET:	2 OF 2