

| REVISIONS | | | | |
|-----------|------|-------------|----|-----|
| NO. | DATE | DESCRIPTION | BY | CKD |
| | | | | |

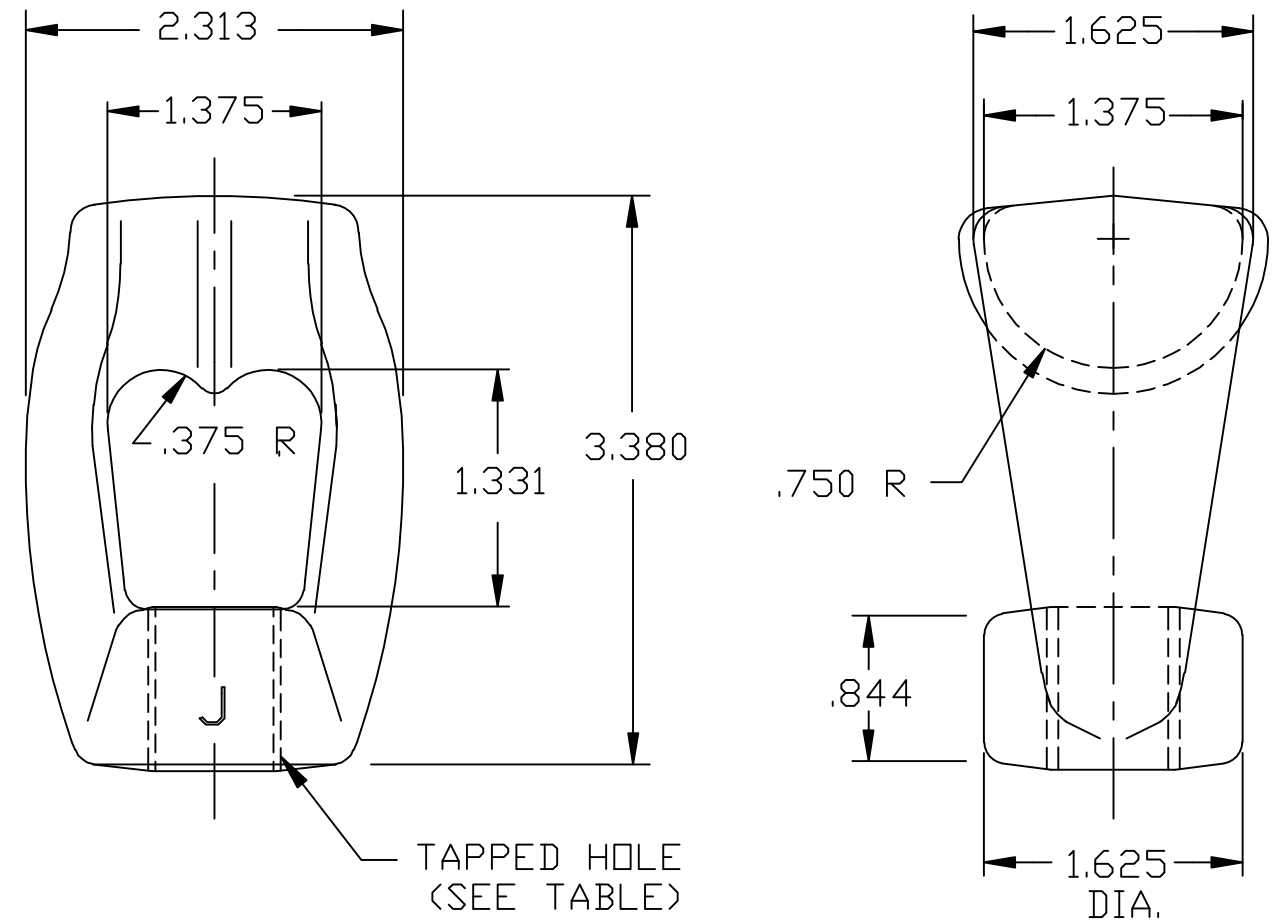
| CATALOG NO. | SIZE | TAPPED THREADS | | | | NOMINAL DRILL SIZE O.D. | NOMINAL TAP SIZE O.D. |
|-------------|------|----------------|------|----------------|------|----------------------------|--------------------------|
| | | PITCH DIAMETER | | MINOR DIAMETER | | | |
| | | MIN. | MAX | MIN. | MAX | | |
| J6515 | .625 | .587 | .594 | .548 | .567 | .566 | .646-11 |
| J6516 | .750 | .706 | .714 | .663 | .684 | .672 | .771-10 |

MATERIAL:

HOT ROLLED CARBON STEEL (ASTM A-36)


FINISH:

HOT DIP GALVANIZED (ASTM A-153) PRIOR TO TAPPING



ENG. REF.

This information is confidential and is the property of Maclean Power Systems. It may not be made public or reproduced except that the Customer may make copies for use solely in installation, maintenance, and operation of products supplied by Maclean Power Systems.

| | | | | |
|--|----------|------------|-----|------------|
|  MACLEAN POWER SYSTEMS A Maclean-fogg Company | | | | |
| TWINEYE NUT | | | | |
| DATE: 5-6-91 | SCALE: | NO. 1195-C | R/O | SH. 1 OF 1 |
| DWN. BY: N/A | CKD. BY: | APR. BY: | | |