

1	2	3	4	5
COMPONENT SPECIFICATION	USE OR REPRODUCTION OF THIS DRAWING FOR THE PURPOSE OF MANUFACTURING THIS ARTICLE OR ANY ARTICLES SHOWN FOR ANY PURPOSE IS STRICTLY PROHIBITED WITHOUT WRITTEN PERMISSION FROM SENIOR INDUSTRIES, INC.			

SPECIFICATIONS

ELECTRICAL:

CONTACT RATING: 300 mA @ 125 VAC
 CONTACT RESISTANCE: 20 MILLIOHMS MAX.
 INSULATION RESISTANCE: 100 MEGOHMS MIN. @ 500 VDC
 DIELECTRIC STRENGTH: 500 V RMS

MECHANICAL:

LIFE: 15,000 CYCLES
 ACTUATION FORCE: 200 ±50 GRAMS

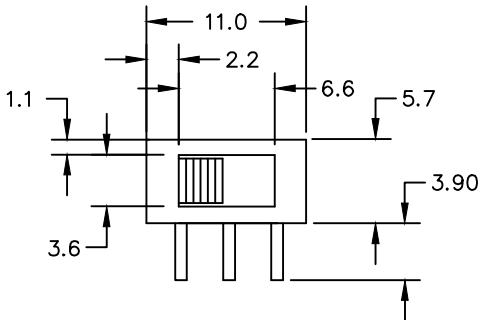
MATERIAL:

ACTUATOR: PBT, UL94V-0
 HOUSING: STEEL, TIN PLATED
 CONTACTS: PHOSPHOR BRONZE
 TERMINALS: BRASS
 PLATING: CONTACT AREA - GOLD OR SILVER OVER NICKEL
 TERMINATION AREA - TIN OVER NICKEL.

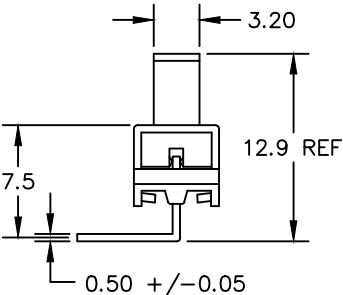
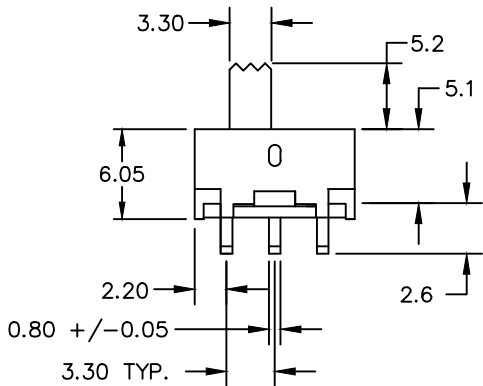
ENVIRONMENTAL:

OPERATING TEMPERATURE: -40°C TO +85°C

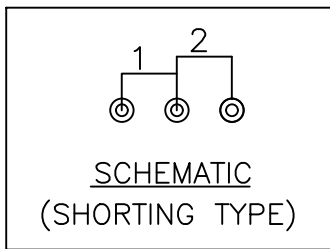
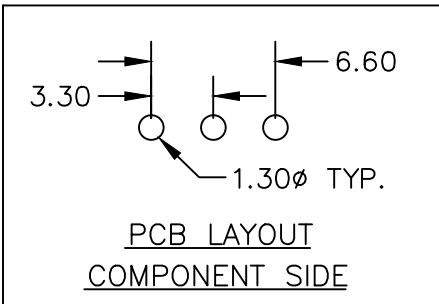
A



B



C



NOTE: 'X' IN PART NUMBER DENOTES PLATING:
 1 - SILVER PLATING
 3 - GOLD PLATING



SENIOR INDUSTRIES, INC.

TELECOM GRADE

DESIGNED:			SYMBOL	DATE	DESCRIPTION OF REVISIONS:	DRAWN:	APPD:	TOLERANCE:	PART NO:	12SL9RX
DRAWN:	TSF	11/28/98	△	08.22.99	Transfer from original factory drawing to CAD	RB	JF	TO 1 DECIMAL PLACE: ±.2	TITLE:	SLIDE SWITCH
CHECKED:	GAT	09/09/05	△	08.25.05	New Index, Spec Updates, Notes Corrected	KO	JF			
APPROVED:	JF	11/03/05	△	09.27.11	Correct actuation force to 200 +/- 50 gf	MAW	JF	TO 2 DECIMAL PLACES: ±.10	SHEET:	1 OF 1
			△	05.21.13	Added standoffs to PBT plate	MAW	JF	AS ANGLES: ±1/2°		
3RD ANGLE		UNIT:	mm	SCALE:	2:1	REV.	F			