

| | | | | |
|-------------------------|--|---|---|---|
| 1 | 2 | 3 | 4 | 5 |
| COMPONENT SPECIFICATION | USE OR REPRODUCTION OF THIS DRAWING FOR THE PURPOSE OF MANUFACTURING THIS ARTICLE OR ANY ARTICLES SHOWN FOR ANY PURPOSE IS STRICTLY PROHIBITED WITHOUT WRITTEN PERMISSION FROM SENIOR INDUSTRIES, INC. | | | |

SPECIFICATIONS

ELECTRICAL:

CONTACT RATING: 300 mA @ 125 VAC
 CONTACT RESISTANCE: 20 MILLIOHMS MAX.
 INSULATION RESISTANCE: 100 MEGOHMS MIN. @ 500 VDC
 DIELECTRIC STRENGTH: 500 V RMS

MECHANICAL:

LIFE: 15,000 CYCLES
 ACTUATION FORCE: 400 ±150 GRAMS

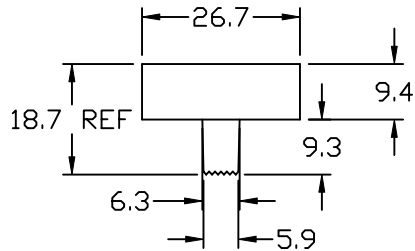
MATERIAL:

ACTUATOR: PBT, UL94V-0
 HOUSING: STEEL, TIN PLATED
 CONTACTS: PHOSPHOR BRONZE
 TERMINALS: BRASS
 PLATING: CONTACT AREA - GOLD OR SILVER OVER NICKEL
 TERMINATION AREA - TIN OVER NICKEL.

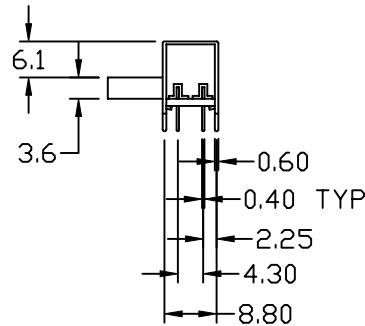
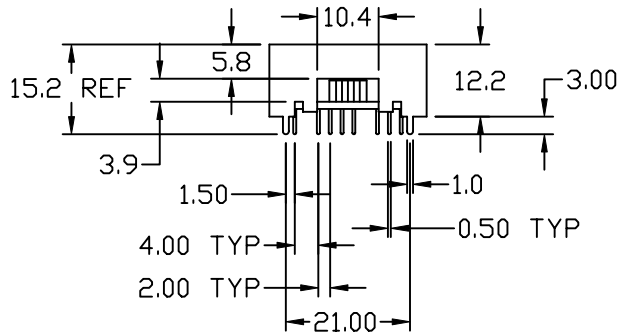
ENVIRONMENTAL:

OPERATING TEMPERATURE: -40°C TO +85°C

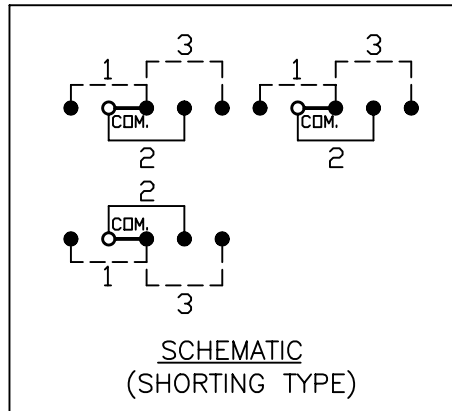
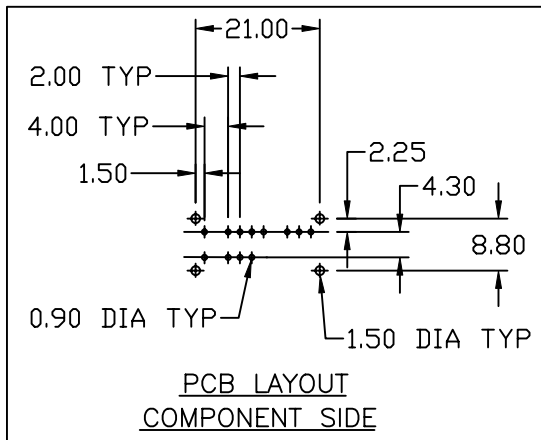
A



B



C



NOTE: 'X' IN PART NUMBER DENOTES PLATING:
 1 - SILVER PLATING
 3 - GOLD PLATING

TELECOM GRADE



SENIOR INDUSTRIES, INC.

| | | | | | | | | | | |
|-----------|-----|----------|------|----------|---|--------|-------|------------------|----------|---------|
| DESIGNED: | | | SYM. | DATE: | DESCRIPTION OF REVISIONS: | DRAWN: | APPD: | TOLERANCE: | PART NO: | 33MS2RX |
| DRAWN: | TSF | 01/18/99 | ▲ | 01.30.99 | Transfer original drawing into CAD format | TF | JF | | | |
| CHECKED: | GAT | 11/11/05 | ▲ | 08.30.05 | New Index, Spec Updates, Notes Corrected | KO | JF | AS ANGLES: ±1/2° | SHEET: | 1 OF 1 |
| APPROVED: | JF | 11/14/05 | ▲ | | | | | | | |
| 3RD ANGLE | | UNIT: | mm | SCALE: | 1:1 | REV. | C | | | |