

1	2	3	4	5
<b>COMPONENT SPECIFICATION</b>	USE OR REPRODUCTION OF THIS DRAWING FOR THE PURPOSE OF MANUFACTURING THIS ARTICLE OR ANY ARTICLES SHOWN FOR ANY PURPOSE IS STRICTLY PROHIBITED WITHOUT WRITTEN PERMISSION FROM SENIOR INDUSTRIES, INC.			

SPECIFICATIONS

ELECTRICAL:

CONTACT RATING: 300 mA @ 125 VAC  
 CONTACT RESISTANCE: 20 MILLIOHMS MAX.  
 INSULATION RESISTANCE: 100 MEGOHMS MIN. @ 500 VDC  
 DIELECTRIC STRENGTH: 500 V RMS

MECHANICAL:

LIFE: 15,000 CYCLES  
 ACTUATION FORCE: 400 ±150 GRAMS

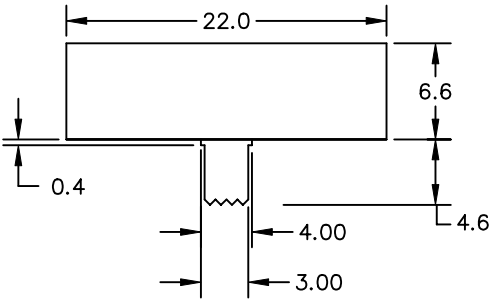
MATERIAL:

ACTUATOR: PBT, UL94V-0  
 HOUSING: STEEL, TIN PLATED  
 CONTACTS: PHOSPHOR BRONZE  
 TERMINALS: BRASS  
 PLATING: CONTACT AREA - GOLD OR SILVER OVER NICKEL  
 TERMINATION AREA - TIN OVER NICKEL.

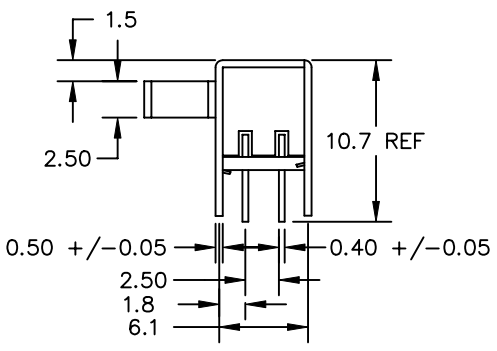
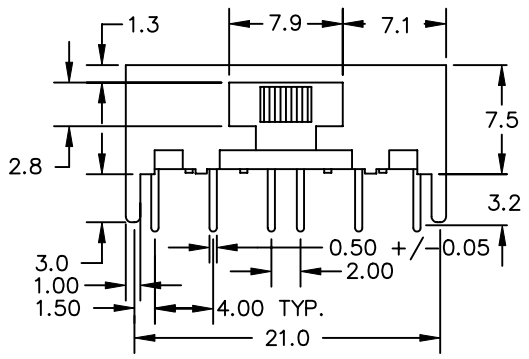
ENVIRONMENTAL:

OPERATING TEMPERATURE: -40°C TO +85°C

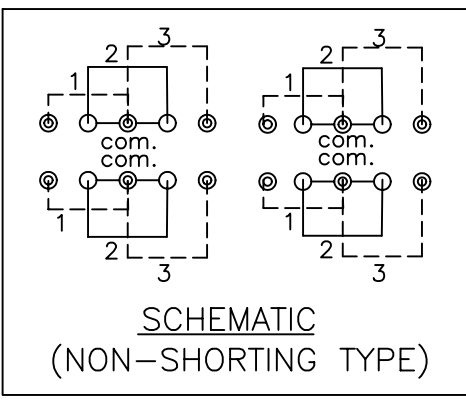
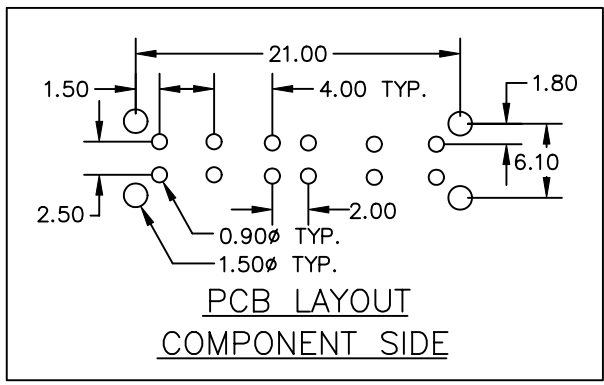
A



B



C



NOTE: 'X' IN PART NUMBER DENOTES PLATING:  
 1 - SILVER PLATING  
 3 - GOLD PLATING



TELECOM GRADE

DESIGNED:			SYM.	DATE:	DESCRIPTION OF REVISIONS:	DRAWN:	APPD:	TOLERANCE:	PART NO:	42HH4RX
DRAWN:	TSF	11/28/99	▲	08.25.99	Transfer original drawing into CAD format	RB	JF			
CHECKED:	GAT	11/17/05	▲	11.17.05	New Index, Spec Updates, Notes Corrected	GAT	JF	AS ANGLES: ±1/2°	SHEET:	1 OF 1
APPROVED:	JF	11/17/05	▲							
3RD ANGLE		UNIT:	mm	SCALE:	2:1	REV.	D			