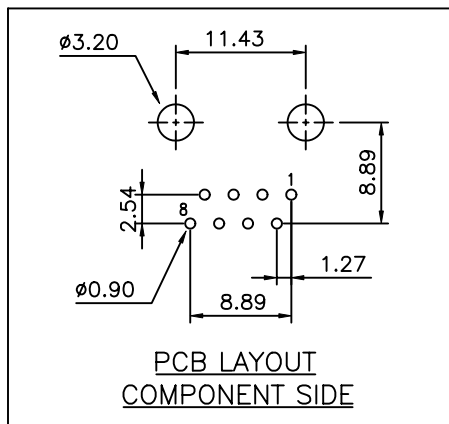
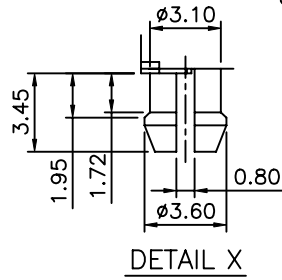
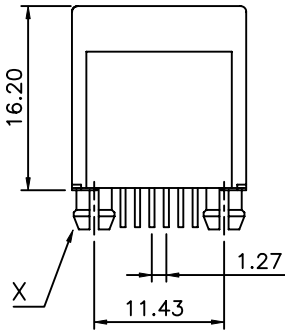
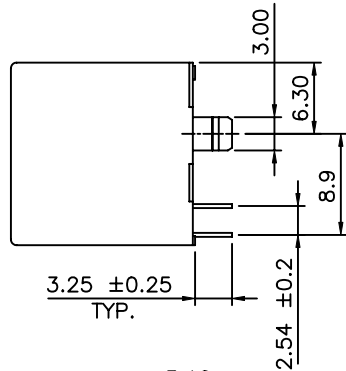
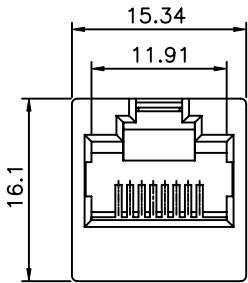


COMPONENT SPECIFICATION

USE OR REPRODUCTION OF THIS DRAWING FOR THE PURPOSE OF MANUFACTURING THIS ARTICLE OR ANY ARTICLES SHOWN FOR ANY PURPOSE IS STRICTLY PROHIBITED WITHOUT WRITTEN PERMISSION FROM SENIOR INDUSTRIES, INC.

SPECIFICATIONS



ELECTRICAL

CONTACT RATING: 1.5A AT 125 VAC
 CONTACT RESISTANCE: 30 MILLIOHMS MAX.
 INSULATION RESISTANCE: 500 MEGOHMS MIN. AT 500 VDC
 DIELECTRIC STRENGTH: 1000 VRMS FOR 1 MINUTE

MECHANICAL

LIFE: 750 CYCLES MIN.

ENVIRONMENTAL

OPERATING TEMPERATURE: 0°C TO 70°C
 STORAGE TEMPERATURE: -40°C TO +85°C

MATERIAL

HOUSING: GLASS FILLED PBT, UL94V-0
 TERMINALS: 0.35mm THICK PHOSPHOR BRONZE
 PLATING: CONTACT AREA - SELECTIVE GOLD OVER NICKEL
 TERMINATION AREA - TIN OVER NICKEL
 CAVITY CONFORMS TO FCC RULES AND REGULATIONS PART 68, SUBPART F. CATEGORY 5 COMPONENT COMPLIANT.

PART NUMBER BUILDER:

MODEL	KEYWAY	CONTACTS	PLATING	COLOR
9620				
BLANK "K" (WITH KEY)				
		0 = 8 CONTACTS 1 = 6 CONTACTS 2 = 4 CONTACTS		
			1. 15 µIN. Au 2. 30 µIN. Au 3. 50 µIN. Au 4. 6 µIN. Au 5. 3 µIN. Au	
				1. BLUE 2. RED 3. BLACK (STD) 4. BROWN 5. GREEN 6. WHITE 7. GRAY 8. ORANGE 9. YELLOW 10. VIOLET 11. IVORY/NEUTRAL

RoHS COMPLIANT



SENIOR INDUSTRIES, INC.

DESIGNED:	DATE:	SYM.	DATE:	DESCRIPTION OF REVISIONS:	DRAWN:	APPD:
	03.07.01	▲	03.07.01	NEW	RB	JF
DRAWN: RJT	01/19/01	▲	07.25.05	New Index, PN Bldr Corr'd, Add Dimensions (8P)	KO	JF
CHECKED: GAT	06/30/09	▲	08.21.06	General spec updated	GAT	JF
APPROVED: JF	06/30/09	▲	06.30.09	Added Cat 5 note & tin pl. in term. area.	GAT	JF

TOLERANCE:	PART NO:	TITLE:
	9620-XX-X	MODULAR JACK
TO 1 DECIMAL PLACE: ±.25		
TO 2 DECIMAL PLACES: ±.13		
AS ANGLES: ±1/2°	SHEET:	1 OF 1



UNIT:	mm	SCALE:	1:1	REV:	D
-------	----	--------	-----	------	---