

1

2

3

4

5

## COMPONENT SPECIFICATION

USE OR REPRODUCTION OF THIS DRAWING FOR THE PURPOSE OF MANUFACTURING THIS ARTICLE OR ANY ARTICLES SHOWN FOR ANY PURPOSE IS STRICTLY PROHIBITED WITHOUT WRITTEN PERMISSION FROM SENIOR INDUSTRIES, INC.

## SPECIFICATIONS

ELECTRICAL:

CONTACT RATING: 1.5A AT 125 VAC  
 CONTACT RESISTANCE: 30 MILLIOHMS MAX.  
 INSULATION RESISTANCE: 500 MEGOHMS MIN. AT 500 VDC  
 DIELECTRIC STRENGTH: 1000 VRMS FOR 1 MINUTE

MECHANICAL:

LIFE: 750 CYCLES MIN.

ENVIRONMENTAL:

PART SHALL WITHSTAND REFLOW SOLDER TEMPERATURE OF 260°C FOR 10 SECONDS.  
 OPERATING TEMPERATURE: 0°C TO 70°C  
 STORAGE TEMPERATURE: -40°C TO +85°C

MATERIAL:

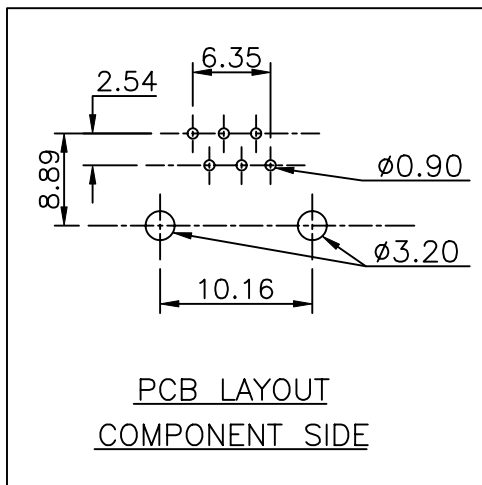
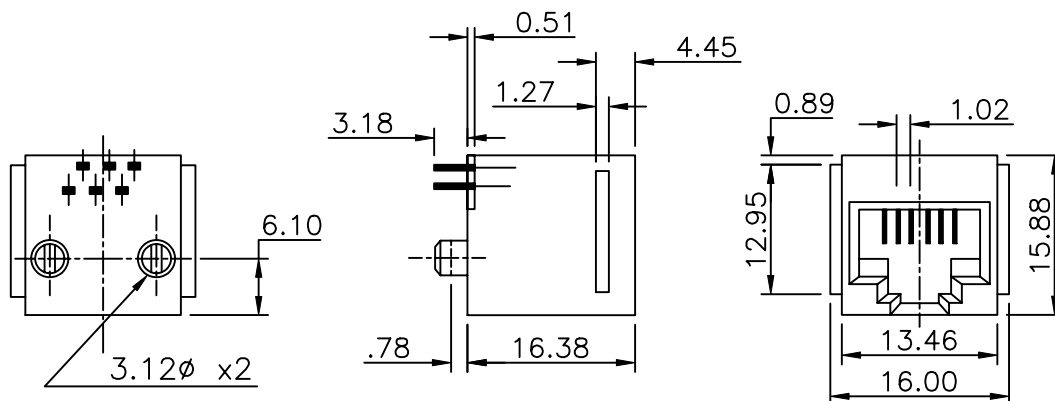
HOUSING: GLASS FILLED NYLON 6/6, UL94V-0  
 TERMINALS: PHOSPHOR BRONZE, 0.35t  
 PLATING: CONTACT AREA - SELECTIVE GOLD OVER 100 µIN NICKEL OVER TIN  
 TERMINATION AREA - 100 µIN TIN OVER NICKEL

REGULATORY:

UL AND CANADA RECOGNIZED COMPONENT. UL/CUL FILE NO. E147880.

PART NUMBER BUILDER:

MODEL	KEYWAY	CONTACTS	PLATING	COLOR
9646		—		—
BLANK	"K" (WITH KEY)	—	—	—
0 = 6 CONTACTS				
1 = 4 CONTACTS				
2 = 2 CONTACTS	1. 15 µIN. Au	7. GRAY		
	2. 30 µIN. Au	8. ORANGE		
	3. 50 µIN. Au	9. YELLOW		
	4. 6 µIN. Au	10. VIOLET		
	5. 3 µIN. Au	11. IVORY/NEUTRAL		



**SENIOR INDUSTRIES, INC.**

DESIGNED:	DATE:	DESCRIPTION OF REVISIONS:	DRAWN:	APPD:	TOLERANCE:	PART NO:	TITLE:
	03.01.00	NEW	RB	JF	TO 1 DECIMAL PLACE: ± .3 TO 2 DECIMAL PLACES: ±.12	9646-XX-X	MODULAR JACK
DRAWN: RB	01/15/00	07.27.05 New Index, PN Builder Corrected, UL rating	KO	JF			
CHECKED: GAT	02/08/06				AS ANGLES: ±1/2°	SHEET:	1 OF 1
APPROVED: JF	02/08/06						
3RD ANGLE		UNIT: mm	SCALE: 2:1	REV: C			