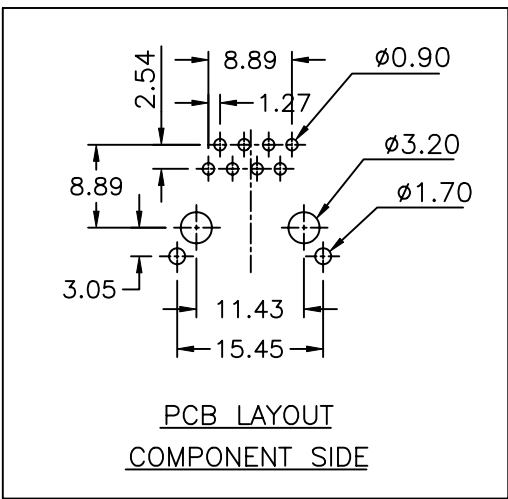
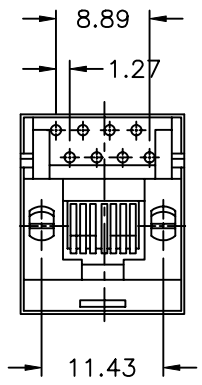
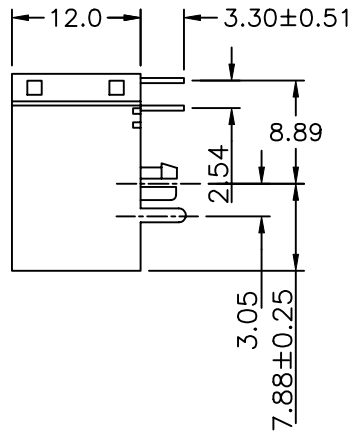
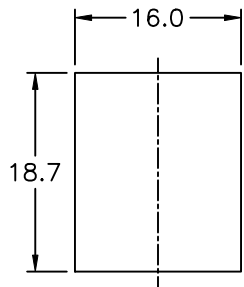


1	2	3	4	5
COMPONENT SPECIFICATION	USE OR REPRODUCTION OF THIS DRAWING FOR THE PURPOSE OF MANUFACTURING THIS ARTICLE OR ANY ARTICLES SHOWN FOR ANY PURPOSE IS STRICTLY PROHIBITED WITHOUT WRITTEN PERMISSION FROM SENIOR INDUSTRIES, INC.			SPECIFICATIONS



**ELECTRICAL:**  
 CONTACT RATING: 1.5A AT 125 VAC  
 CONTACT RESISTANCE: 30 MILLIOHMS MAX.  
 INSULATION RESISTANCE: 500 MEGOHMS MIN. AT 500 VDC  
 DIELECTRIC STRENGTH: 1000 VRMS FOR 1 MINUTE

**MECHANICAL:**  
 LIFE: 750 CYCLES MIN.

**ENVIRONMENTAL:**  
 OPERATING TEMPERATURE: -40°C TO +105°C  
 STORAGE TEMPERATURE: -40°C TO +105°C

**MATERIAL:**  
 HOUSING: GLASS FILLED POLYESTER, UL94V-0  
 TERMINALS: PHOSPHOR BRONZE, 0.35t  
 SHIELD: BRASS, TIN PLATED  
 PLATING: CONTACT AREA - SELECTIVE GOLD PLATING OVER NICKEL OVER TIN  
 TERMINATION AREA -100 μIN. TIN OVER NICKEL

**REGULATORY:**  
 UL RECOGNIZED COMPONENT. UL FILE NO. E147880.

**PART NUMBER BUILDER:**

MODEL	KEYWAY	CONTACTS	PLATING	COLOR
9657R				
BLANK "K" (WITH KEY)				
0 = 8 CONTACTS 1 = 6 CONTACTS 2 = 4 CONTACTS			1. 15 μIN. Au 2. 30 μIN. Au 3. 50 μIN. Au 4. 6 μIN. Au 5. 3 μIN. Au	1. BLUE 2. RED 3. BLACK (STD) 4. BROWN 5. GREEN 6. WHITE 7. GRAY 8. ORANGE 9. YELLOW 10. VIOLET 11. IVORY/NEUTRAL



DESIGNED:		SYM.	DATE:	DESCRIPTION OF REVISIONS:	DRAWN:	APPD:	TOLERANCE:	PART NO:	9657R-XX-X
DRAWN:	RJT 01/19/01	▲	03.07.01	NEW	RB	JF	TO 1 DECIMAL PLACE: ±.3 TO 2 DECIMAL PLACES: ±.15	TITLE:	MODULAR JACK
CHECKED:	GAT 07/19/10	▲	07.26.05	New Index, PN Builder Corr'd, 'R' added in PN	KO	JF		SHEET:	1 OF 1
APPROVED:	JF 07/19/10	▲	04.14.10	Corr temp. to: -40 to +105°C	GAT	JF	AS ANGLES:	±1/2°	
		▲	07.19.10	Corr 18.5, 15.7 and 4.00 dims	GAT	JF			
3RD ANGLE		UNIT:	mm	SCALE:	2:1	REV:	D		