

1

2

3

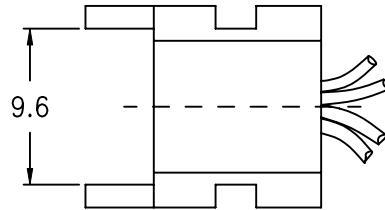
4

5

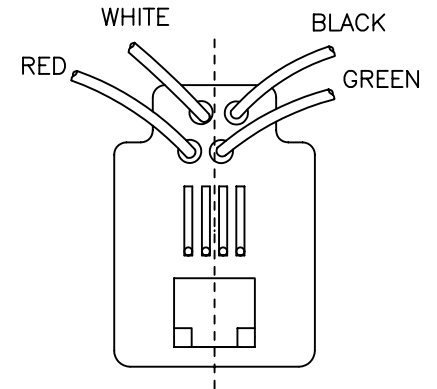
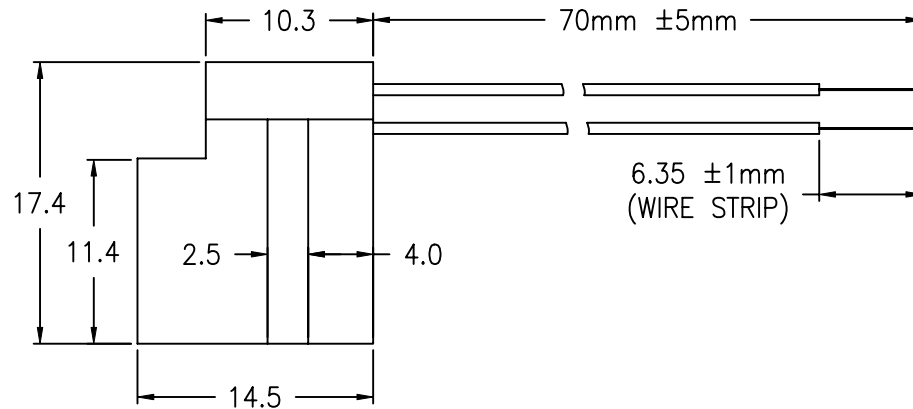
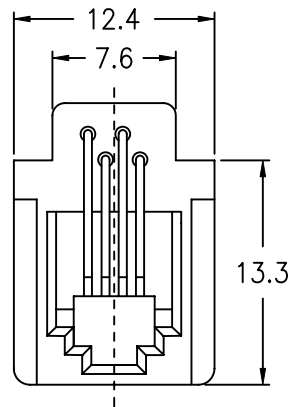
COMPONENT SPECIFICATION

USE OR REPRODUCTION OF THIS DRAWING FOR THE PURPOSE OF MANUFACTURING THIS ARTICLE OR ANY ARTICLES SHOWN FOR ANY PURPOSE IS STRICTLY PROHIBITED WITHOUT WRITTEN PERMISSION FROM SENIOR INDUSTRIES, INC.

A



B



C



SENIOR INDUSTRIES, INC.

DESIGNED:			SYMBOL	DATE	DESCRIPTION OF REVISIONS:	DRAWN:	APPD:	TOLERANCE:	PART NO:	9918-XX-X-X
DRAWN:	RJT	02/07/01	▲	03.14.01	NEW	RB	JF		TO 1 DECIMAL PLACE: ±.2 TO 2 DECIMAL PLACES: ±.15	TITLE:
CHECKED:	GAT	02/23/06	▲	05.17.05	Gen dwg/dims/spec updated. Wire length added.	GAT	JF	AS ANGLES: ±1/2°		SHEET:
APPROVED:	JF	02/23/06	▲	02.23.06	Wire Termination options added in PN Builder	GAT	JF			
3RD ANGLE			UNIT:	mm	SCALE:	1:1	REV:	C		

1

2

3

4

5

COMPONENT SPECIFICATION

USE OR REPRODUCTION OF THIS DRAWING FOR THE PURPOSE OF MANUFACTURING THIS ARTICLE OR ANY ARTICLES SHOWN FOR ANY PURPOSE IS STRICTLY PROHIBITED WITHOUT WRITTEN PERMISSION FROM SENIOR INDUSTRIES, INC.

SPECIFICATIONS

ELECTRICAL

CONTACT RATING: 1.5A AT 125 VAC
CONTACT RESISTANCE: 50 MILLIOHMS MAX.
INSULATION RESISTANCE: 500 MEGOHMS MIN. AT 500 VDC
DIELECTRIC STRENGTH: 500 VAC FOR 1 MINUTE

MECHANICAL

CRIMP TENSILE STRENGTH: 2.27 Kg (5.0 Lbs)
RETENTION STRENGTH: 7.7 Kg (17 Lbs.) BETWEEN THE JACK AND PLUG
MATING FORCE: 305 grams - 2 WIRE LEAD
500 grams - 4 WIRE LEAD
750 grams - 6 WIRE LEAD

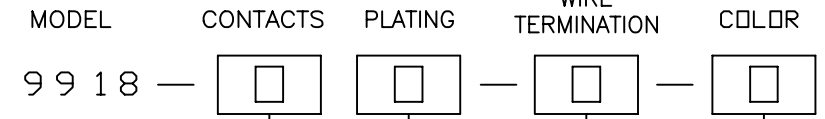
MATERIAL:

HOUSING: ABS, UL94V-0
CONTACT: 0.46mm DIA. PHOSPHOR BRONZE, GOLD PLATED
TERMINAL: 0.40mm THICK BRASS, TIN PLATED
WIRE STYLE: UL1061 AWM 80°C, VW-1.300V, 26 AWG
PVC INSULATION.TOP COATED UL1061 WIRE.

REGULATORY

UL RECOGNIZED COMPONENT. UL FILE NO. E147880.
PART CONFORMS TO FCC RULES AND REGULATIONS PART68, SUBPART F.

PART NUMBER BUILDER:



0 = 4 CONTACTS
1 = 2 CONTACTS

- 1. 15 µIN. Au
2. 30 µIN. Au
3. 50 µIN. Au
4. 6 µIN. Au
5. 3 µIN. Au

- 1. BLUE
2. RED
3. BLACK (STD)
4. BROWN
5. GREEN
6. WHITE
7. GRAY
8. ORANGE
9. YELLOW
10. VIOLET
11. IVORY/NEUTRAL

BLANK (STRIP & DIP)
'A' (SPADE TERMINAL)



SENIOR INDUSTRIES, INC.

Table with columns for DESIGNED, DRAWN, CHECKED, APPROVED, SYM, DATE, DESCRIPTION OF REVISIONS, DRAWN, APPD, TOLERANCE, PART NO, TITLE, SHEET, and 3RD ANGLE. Includes revision history and drawing details.