

COMPONENT SPECIFICATION

USE OR REPRODUCTION OF THIS DRAWING FOR THE PURPOSE OF MANUFACTURING THIS ARTICLE OR ANY ARTICLES SHOWN FOR ANY PURPOSE IS STRICTLY PROHIBITED WITHOUT WRITTEN PERMISSION FROM SENIOR INDUSTRIES, INC.

SPECIFICATIONS

ELECTRICAL

CONTACT RATING: 1.5A AT 125 VAC
 CONTACT RESISTANCE: 30 MILLIOHMS MAX.
 INSULATION RESISTANCE: 500 MEGOHMS MIN. AT 500 VDC
 DIELECTRIC STRENGTH: 500 VRMS FOR 1 MINUTE

MECHANICAL

CRIMP TENSILE STRENGTH: 2.3 Kg MIN.

MATERIAL

HOUSING: ABS, UL94V-0
 CONTACT: 0.46mm PHOSPHOR BRONZE, GOLD OVER NICKEL
 SHORTING BARS: 0.46mm PHOSPHOR BRONZE, GOLD OVER NICKEL
 TERMINAL: 0.4mm BRASS, 100 MICRINCHES TIN
 WIRE STYLE: UL1061 AWM 80°C, VW-1.300V, 26 AWG PVC INSULATION. TOP COATED UL1061 WIRE.

REGULATORY:

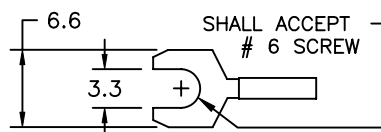
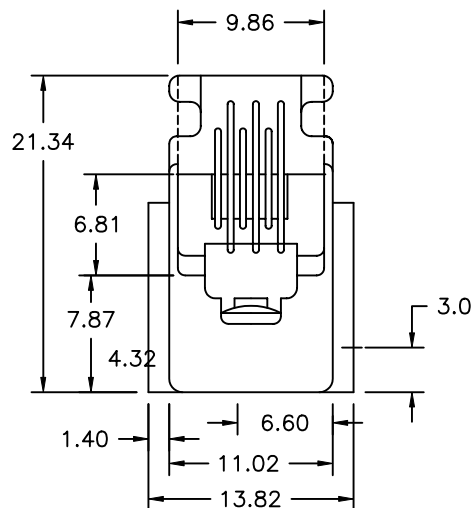
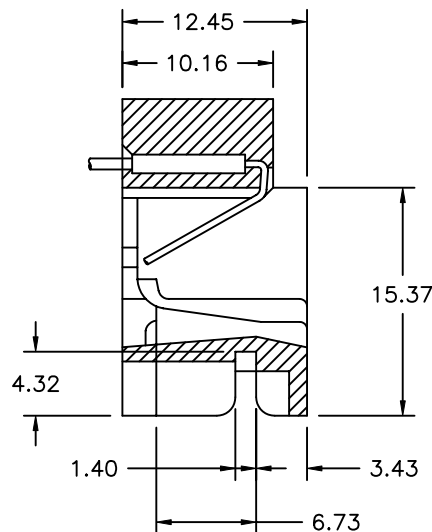
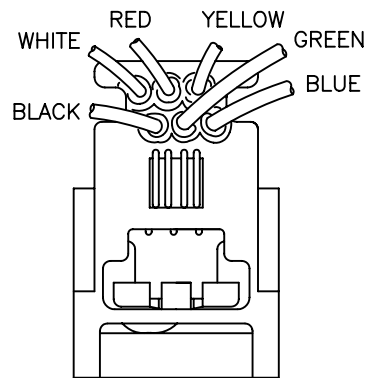
UL RECOGNIZED COMPONENT. UL FILE NO. E147880.

PART NUMBER BUILDER:

MODEL	CONTACTS	PLATING	WIRE TERMINATION	COLOR
9938				
0 = 6 CONTACTS				1. BLUE
1 = 4 CONTACTS				2. RED
2 = 2 CONTACTS				3. BLACK (STD)
				4. BROWN
				5. GREEN
				6. WHITE
				7. GRAY
				8. ORANGE
				9. YELLOW
				10. VIOLET
				11. IVORY/NEUTRAL

1. 15 μIN. Au
 2. 30 μIN. Au
 3. 50 μIN. Au
 4. 6 μIN. Au
 5. 3 μIN. Au

BLANK (STRIP & DIP)
 'A' (SPADE TERMINAL)



SPADE TERMINAL

NOTE: WIRE LENGTH: 7 INCHES



SENIOR INDUSTRIES, INC.

DESIGNED:	DATE:	SYM.	DATE:	DESCRIPTION OF REVISIONS:	DRAWN:	APPD:
	03.14.01	△	03.14.01	NEW	RB	JF
DRAWN:	02/07/01	△	08.08.05	New Index, PN Builder Corrected, 3rdX in PN	KO	JF
CHECKED:	01/31/07	△	01.31.07	Added spade term spec	GAT	JF
APPROVED:	01/31/07	△				

TOLERANCE:	PART NO:	9938-XX-X-X
TO 1 DECIMAL PLACE: ±.3	TITLE:	MODULAR JACK
TO 2 DECIMAL PLACES: ±.15	SHEET:	1 OF 1
AS ANGLES: ±1/2°		

3RD ANGLE	UNIT:	mm	SCALE:	2:1	REV:	C
-----------	-------	----	--------	-----	------	---