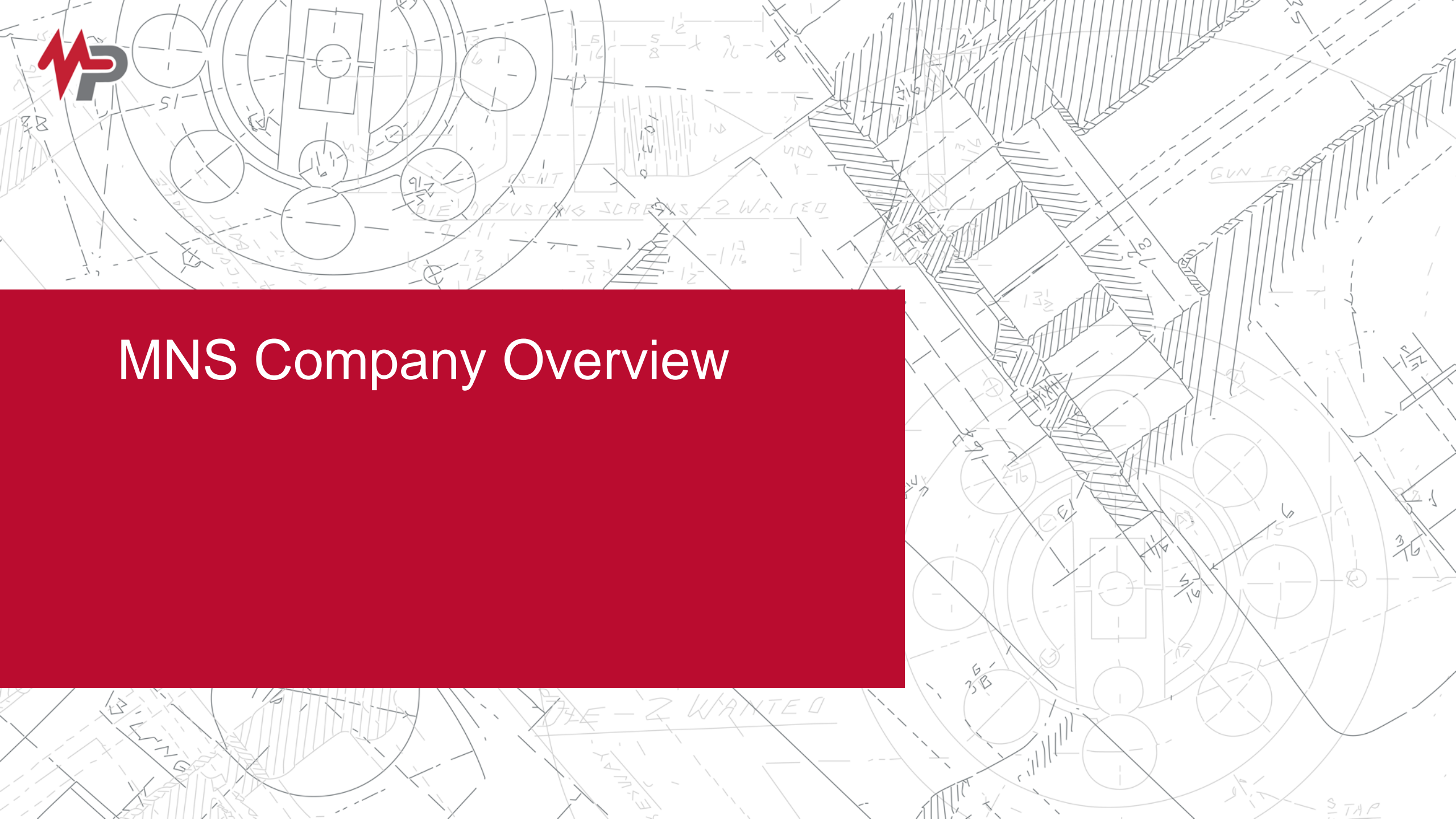




# MNS Company Overview





# MacLean Power Systems

At A Glance



**35+ Years:** Established as a bolt on to a larger parent company in 1986, MPS has grown substantially and is now a standalone company.



**1,900+ Employees:** MacLean Power Systems worldwide workforce consists of more than 1,900 dedicated team members.



**3 Markets Served:** MacLean Power Systems serves 3 major markets across the globe, utility, communications, and civil.



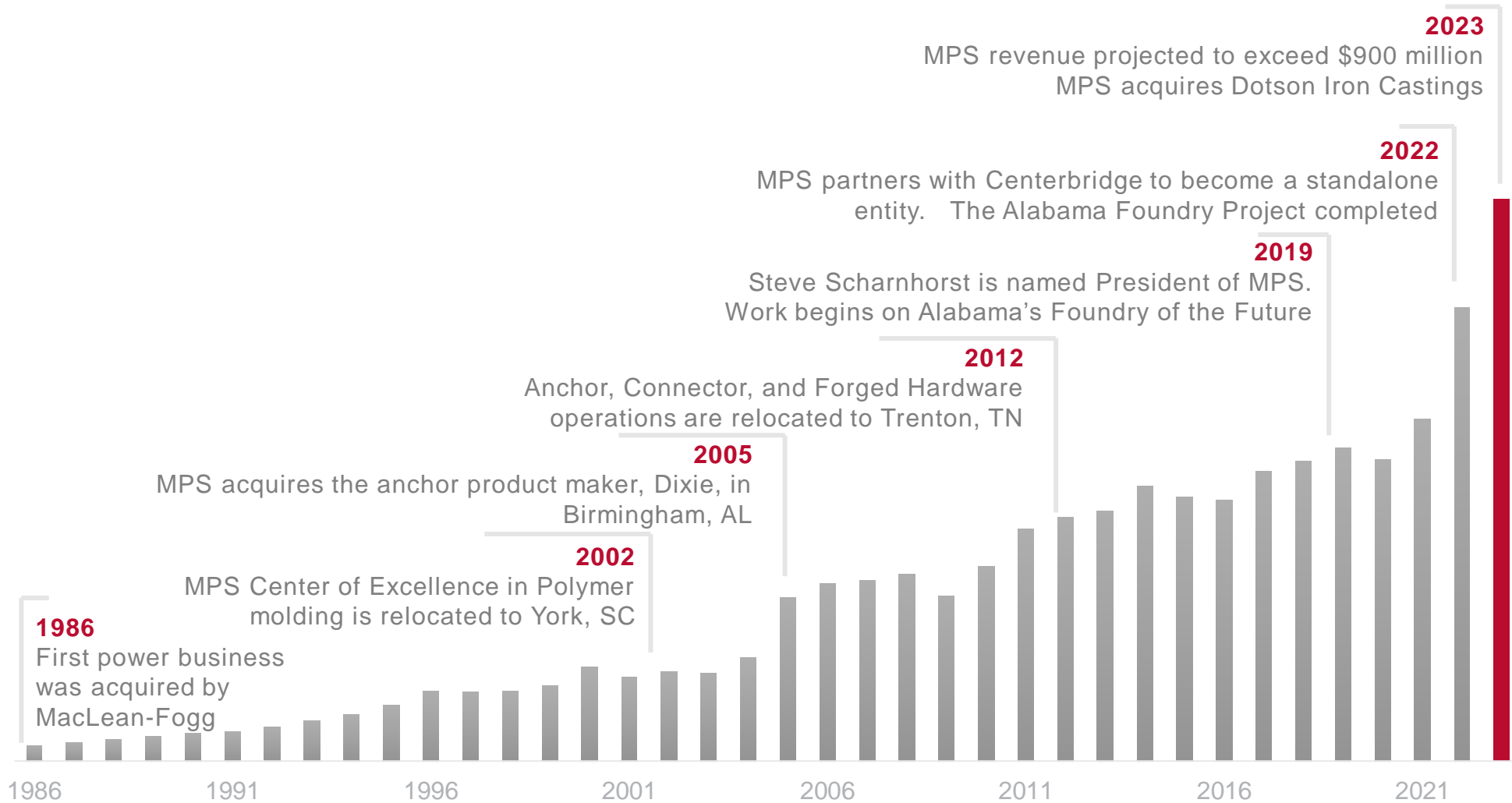
**14 Facilities:** MacLean Power Systems has 14 facilities around the globe.





# MacLean Power Systems

## A Timeline of Growth





# NORTH AMERICAN AND SOUTH AMERICAN LOCATIONS



## **NORTH AMERICA**

### **CORPORATE HEADQUARTERS**

Fort Mill, South Carolina

### **NATIONAL DISTRIBUTION CENTER**

Olive Branch, Mississippi

### **MANUFACTURING**

Alabaster, Alabama

Chateauguay, Quebec, Canada

Mankato, Minnesota

Newberry, South Carolina

Stockton, California

Trenton, Tennessee

Woodale, Illinois

York, South Carolina

## **SOUTH AMERICA**

### **MANUFACTURING**

São Paulo, Brazil





# Values



## Safety

At the heart of all our endeavors lies our unwavering commitment to safety, epitomized by our core value of Mission Zero.



## Leadership

Leadership is inherent in all we do; we are always on stage.



## Accountability

Accountability, lead myself well, step up, own it, correct it and move on.



## Excellence

Excellence, our commitments and behaviors drive our results.



## Trust

We strive to build trust within the team, and our actions determine the speed of trust.



## Teamwork

Building flexibility and accountability helps each other be great.



## Communications

Positive communications drives buy-in.



## Environment

Protecting our community is good business.





# Plant Overview



# Wood Dale, IL

30K SQ FT | 35 Employees



## FACILITY FOCUS

Product design, assembly and distribution of Telecommunication products



## FACILITY FACTS

Home of Network Solutions, MPS's Telecommunications business.



## PRODUCT SPOTLIGHTS

Pole Line Hardware, Drop Hardware and Grounding and Bonding products



## ISO SAFETY STANDARDS

MNS is registered to the ISO 9001:25 quality management standard.





# Trenton, TN

300K SQ FT | 450 Employees



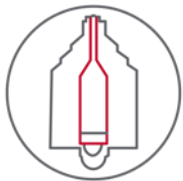
## FACILITY FOCUS

Manual & automatic welding, hot forging, and rotary swaging.



## FACILITY FACTS

Consolidated three factories into one large facility. Added Robotic welding & forging to expedite production time



## PRODUCT SPOTLIGHTS

Anchors, Pole Line Hardware, and Automatic Connectors



## ISO SAFETY STANDARDS

MPS Trenton has achieved an ISO:9001 in quality, environmental and safety







# Alabaster, AL

160K SQ FT | 350 Employees



## FACILITY FOCUS

Aluminum Casting, Fiberglass and Metal Component Assembly, Metal Fabrication



## FACILITY FACTS

Completed consolidation of 2 facilities in 2022. Installed state of the art aluminum foundry to increase output



## PRODUCT SPOTLIGHTS

Iron and Aluminum Hardware, and Fiberglass Brackets & Guy Strain Insulators



## ISO SAFETY STANDARDS

MPS Alabama has achieved an ISO 9001:2015 for Quality, Environmental, and Safety.





# Olive Branch, MS

120K SQ FT | 41 Employees



## FACILITY FOCUS

Distribution Center



## FACILITY FACTS

Consistently shipping over 350 Million pounds of goods annually



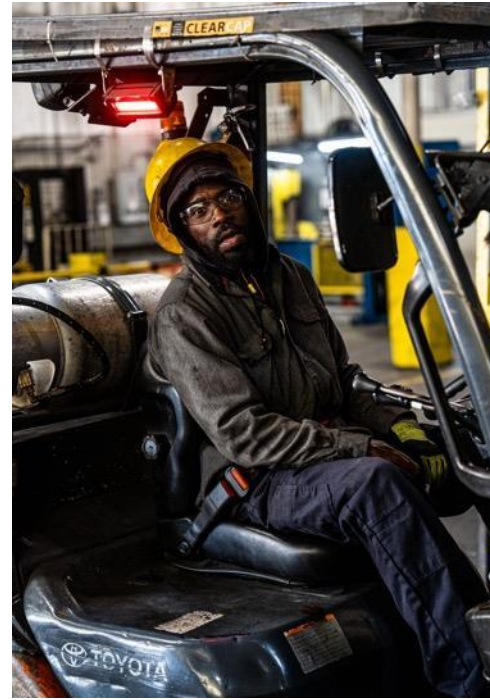
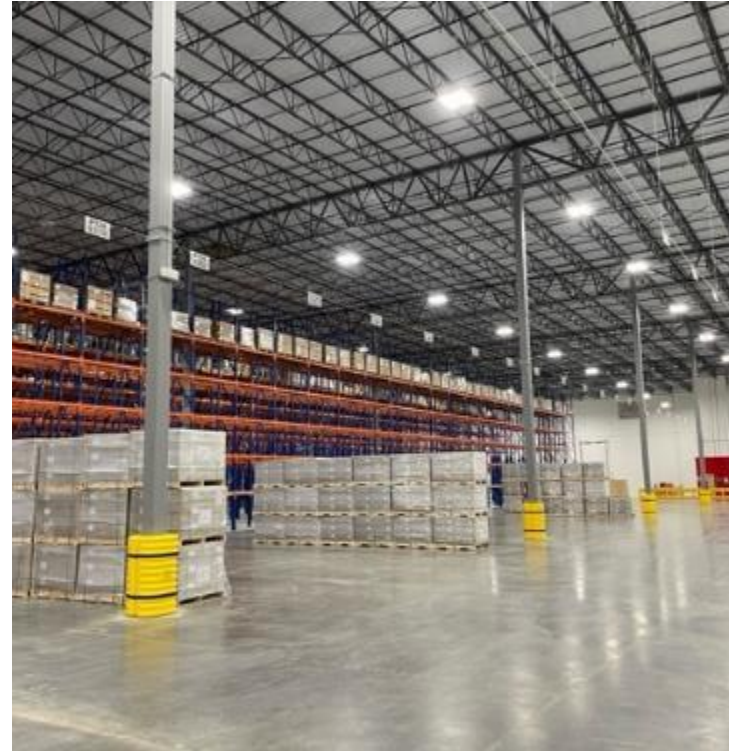
## CONTINUOUS IMPROVEMENT

Reducing LTL shipments to improve customer experience and reduce damage to goods.



## LOGISTICS

MPS Distribution Center partners with the best logistics providers in the country.





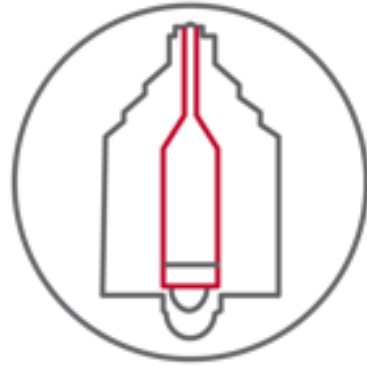
# The MNS Advantage





# The MNS Advantage

- Comprehensive product line
- Best in industry service and support
- Technical support and product training
- Competitive prices and best quality
- Innovative and adaptable

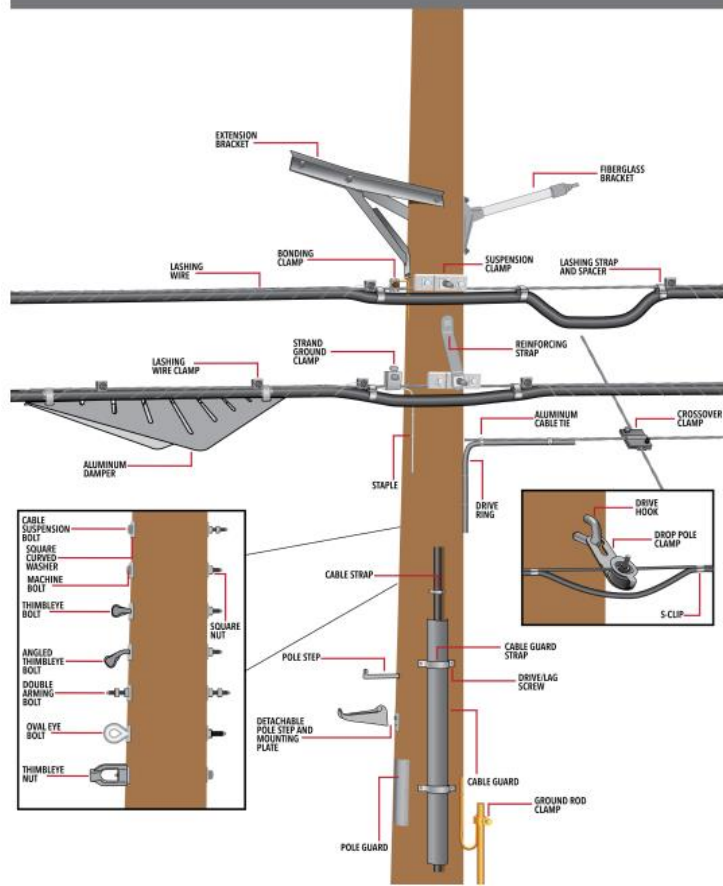




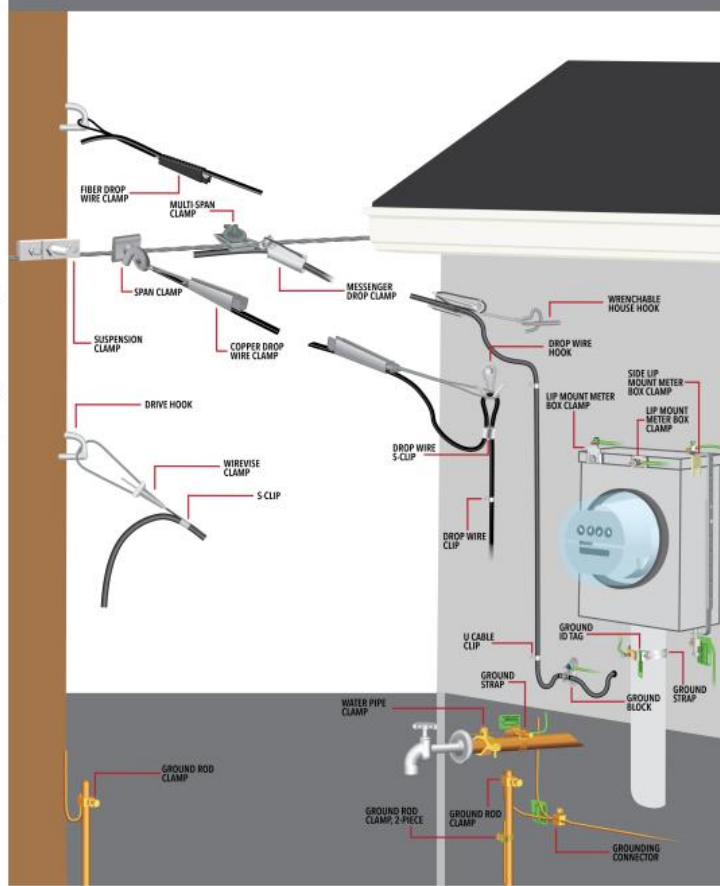
# Comprehensive Product Line

We are your one stop shop

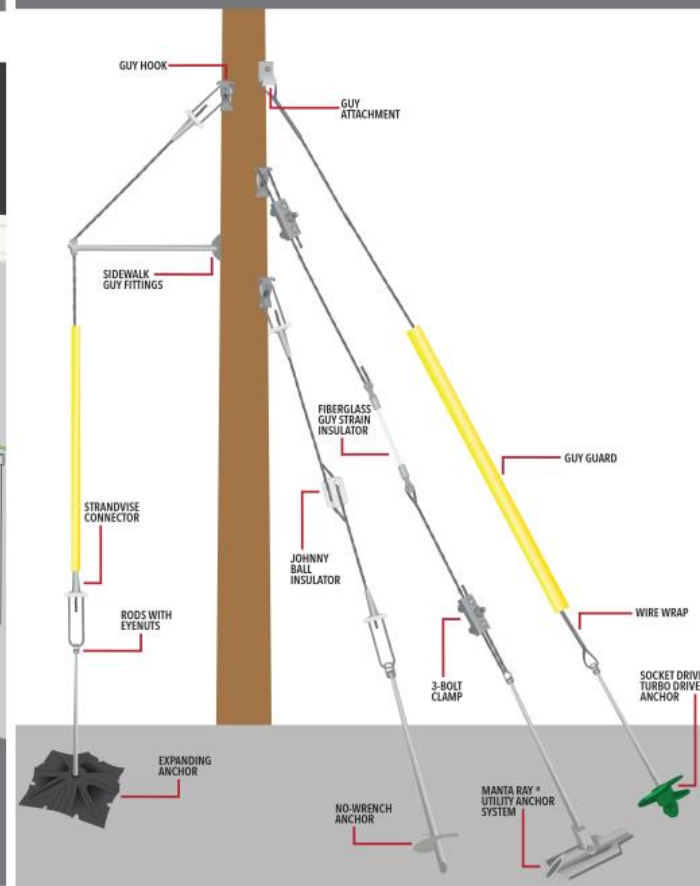
## POLE LINE HARDWARE



## DROP & BONDING / GROUNDING



## GUYING AND ANCHORING





# Comprehensive Product Line



## Buy America Hardware



MacLean has over 1 million square feet of US based manufacturing designed to meet all your domestic manufacturing needs.

- Buy America
- BABAA
- BEAD

Parts that meet these requirements are identified with a –US suffix on catalog numbers. Contact MacLean for details.





# Best In Industry Service and Support

- Providing the highest levels of Service, Support, and Delivery
- Our Commitment, at a minimum
  - On Time Delivery
    - 90% of all lines shipped on time, or early, to the original promise date
  - Short Lead Times
    - 80% of all lines shipped in 4 weeks or less
  - Quality
    - 98% of all lines free from carrier issue or other quality problems





# Best In Industry Service and Support

## Emergency Storm Response



MacLean maintains an inventory to handle all types of natural disasters

- **Hurricanes**
- Ice Storms
- Tornadoes
- Wildfires

In addition, MacLean will assign production priority for storm effected regions

Direct shipment from our distribution centers:

- Olive Branch, MS
- Wood Dale, IL

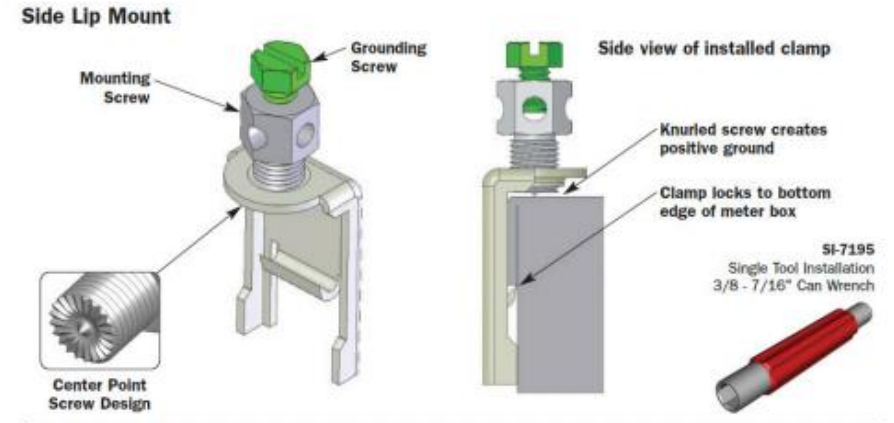


# Technical Support and Training

- Product line support
- Product training options
  - Drop Installation product demonstrations
  - Bonding & Grounding seminars
- IOB handouts & Product Ordering Guides
- Product datasheets (can be found on our website resource library)
- Dedicated Sales Directors & Trainers
- Product Display Boards

## Meter Box Clamp SI-2167SLM

(Patented, UL & CUL Listed)

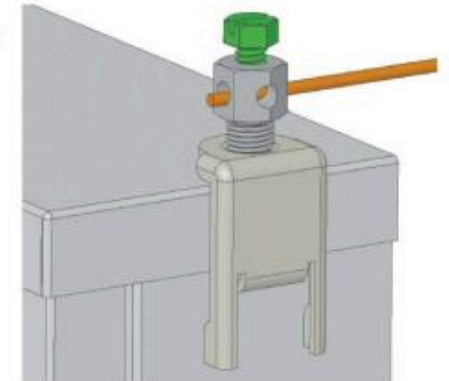


### Application

Side Lip Mount Meter Box Clamp permits the bonding of up to a #6 AWG copper ground wire to the top side lip of the meter box without deforming or disturbing the metal and welded spots.

The patented center point screw design prevents "walking" of the clamp during installation. The 7/16" hex screw allows multiple entry points of the ground wire, reducing the number of bends needed. The knurled edge of the screw grinds down the enamel paint to the base metal in a precise manner while the bottom plate locks itself firmly on the edge of the side top lip, creating a positive ground.

The Side Lip Mount Meter Box Clamp is made entirely of stainless steel and is easily installed using the MSI SI-7195 3/8 - 7/16" Can Wrench.



**For technical assistance or to request samples, please call 800-350-1650**





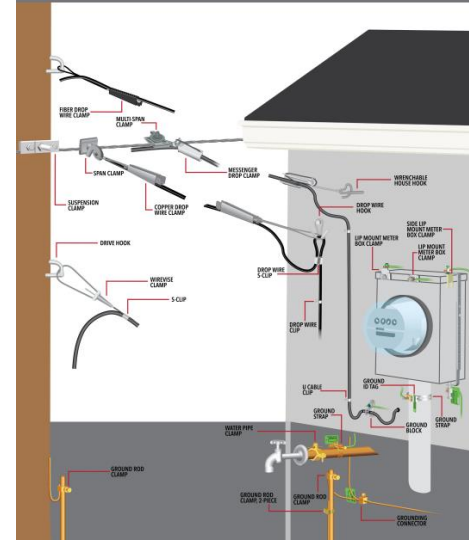
# Digital Drop System Drop Standardization Program



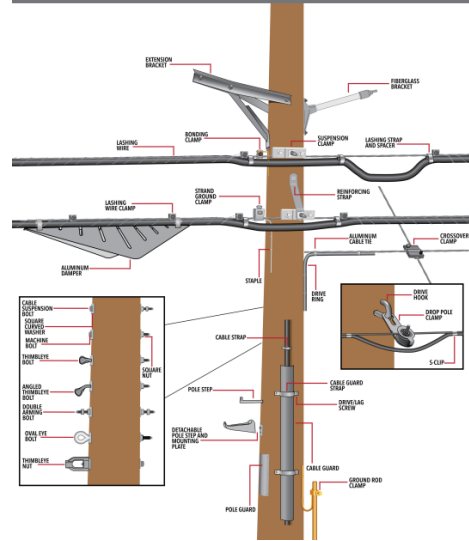
# Technical Support and Training

- Drop Standardization Program
  - Product Training – for in-house Techs and Supervisors
  - Installation Tool – free can wrench to in-house Techs after training
  - Product Display Boards – one for each FFO location
  - IOB Handout – specific to Comcast Houston’s installation practices
- Bonding & Grounding Seminars
- Product Line Support to Tech Ops, Construction, Trainers and Purchasing
- Three Trainers

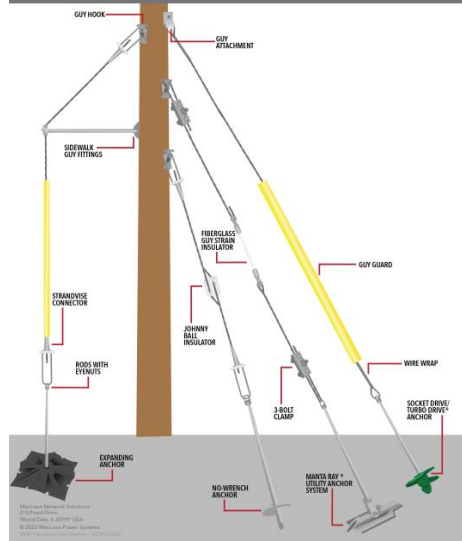
### DROP & BONDING / GROUNDING



### POLE LINE HARDWARE



### GUYING AND ANCHORING





# Drop Standardization Program

- Standardize on select installation hardware
- Consistency within your installed plant
- Cost savings through:
  - Less items / lower inventory
  - Fewer truck rolls
  - Less time “on the ladder”
- Reinforce installation practices with customized brochures and product display boards



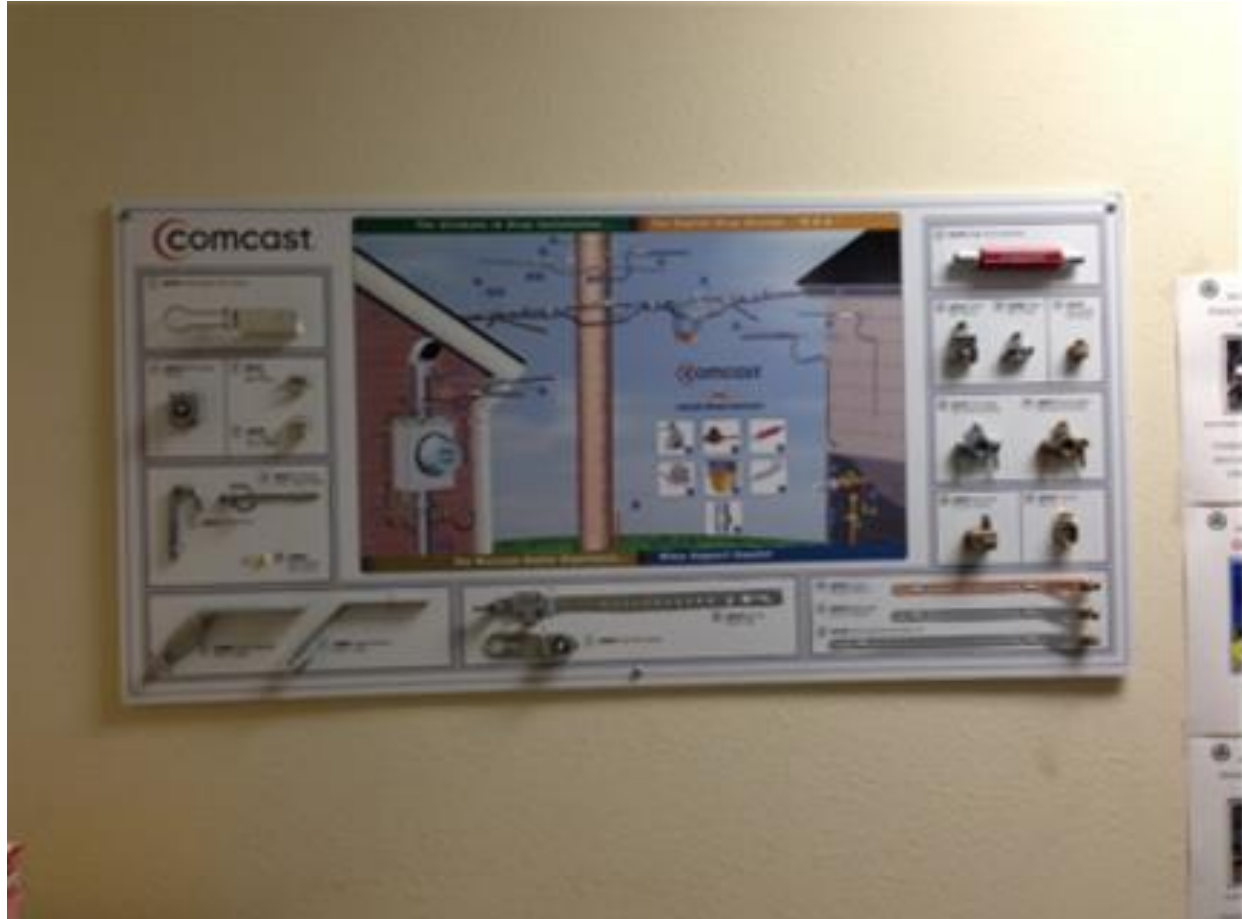


# Training Examples

- Comcast Northern California
  - Trained 1,800 In-House Techs
    - Each received the tool giveaway and IOB handout
  - Trained 700 Contractors
  - 35 FFOs
- Comcast Big South
  - Trained 2,600 In-House Techs
    - Each received the tool giveaway and IOB handout
  - Trained 1,500 Contractors
  - 33 FFOs



# Product Display Boards



Product display boards that are customized and tailored to your specific installation practices



# Comcast GCR Overview

- Comcast GCR audit results for proper Bonding & Grounding practices were 61%
- MacLean was engaged to create a third party, custom training program for proper Bonding & Grounding techniques, per Comcast OES standards and existing Comcast bonding hierarchy
- MacLean trained 756 technicians over a period of 4 weeks utilizing a dedicated three-person training team from MacLean
- Net results of follow-up audit showed improvement to 90%+
- Program is under review for possible consideration in all of Central Division and being reviewed in select systems in West and East regions





Product Lines



# Core Product Lines

- Pole Line Hardware
- Anchors
- Drop Hardware
- Bonding & Grounding Products
- Small Cell Wireless Products
- Enterprise/Central Office Solutions
- Tools



# Pole Line Hardware Solutions

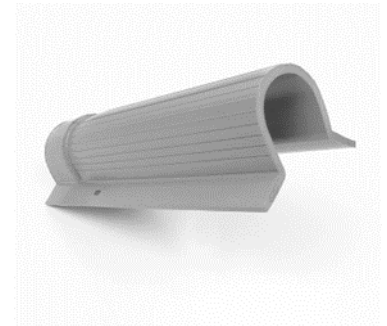
- Fasteners, Bolts, Washers -







# Pole Line Hardware Solutions





# Pole Line Hardware Solutions

- Banding Products -



Bolt-A-Band Style



Ear Lock Style



Link Style



# Pole Line Hardware Solutions

- Lashing Products -



Delta Banding,  
Locking Heads, and  
Spacers

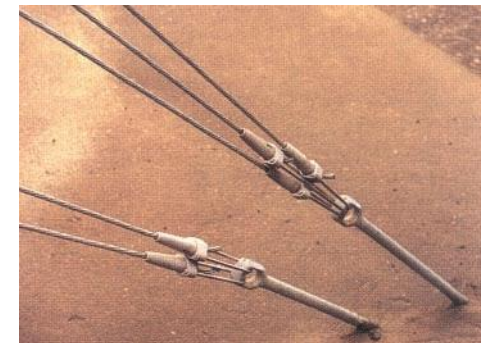


Stainless Steel  
Lashing Straps and  
Spacers



# Pole Line Hardware Solutions

- Automatic Connectors -



Strandvise® Wirevise®

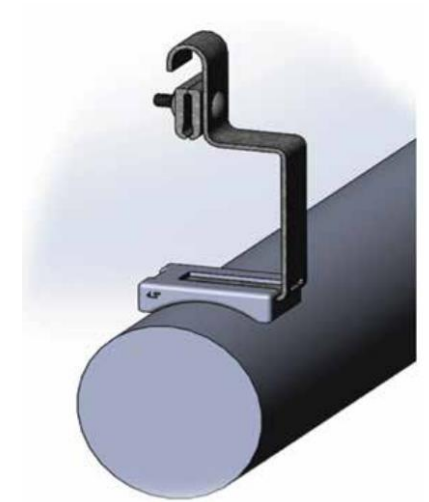




# Pole Line Hardware Solutions

## - Enclosure Mounting Brackets -

- Universal” design will adapt to a range of dome enclosure sizes through interchangeable adapter boots
  - Conforms to the profile of 4.5”, 6”, 8”, and 10” dome enclosure diameters
  - Attached with either quick release hose clamps or lashing straps (both are included)
  - Placing Hook assists with supporting the weight of the dome enclosure during installation to the overhead strand
  - Large 3/8” fastener to support the added weight of larger enclosures





# Pole Line Hardware Solutions

- Fiber Coil Brackets -



## SI-FCB-4830

- » 32" - 40" coil diameter
- » U shaped hooks



## SI-FCB-6044

- » 50" or larger coil diameter
- » U shaped hooks



## SI-FCB-53-OPGW

- » 53" or larger coil diameter
- » Curled hooks to secure a more rigid OPGW coil



## SI-FCB-S

- » 2-piece design
- » 2 hooks (top and bottom of coil)
- » Includes zip ties for securing coil to brackets
- » Includes hardware for pole mounting



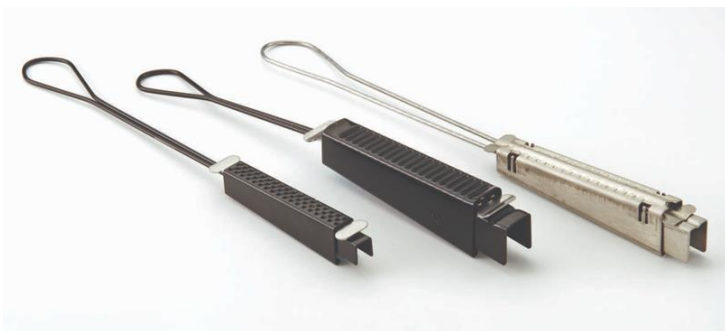


# Guying & Anchoring Solutions





# Drop Hardware Solutions







# Drop Hardware Solutions





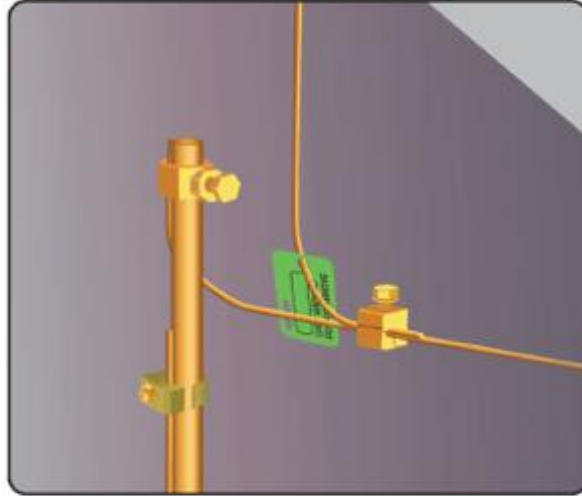
# Bonding & Grounding Solutions



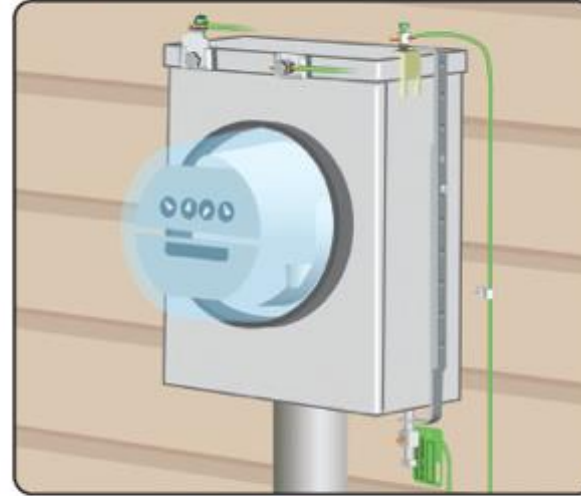


# Bonding & Grounding Practices

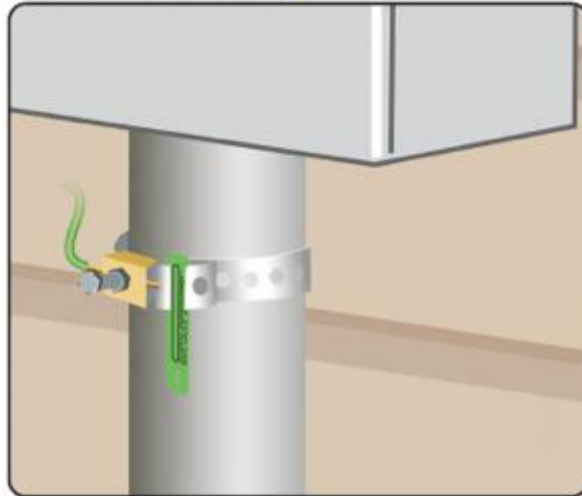
**Power Ground**



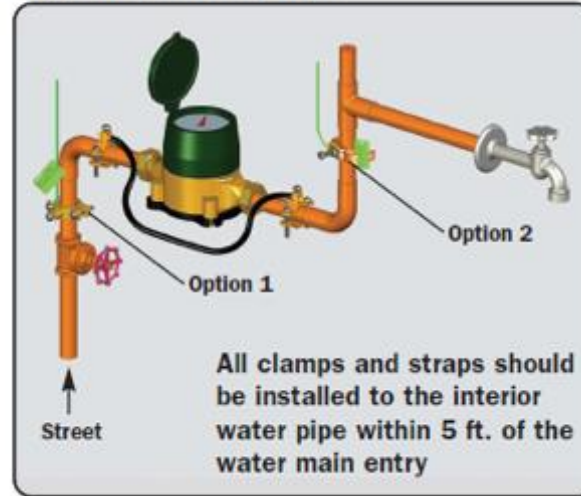
**Power Meter Box**



**Metallic Service Mast Conduit**

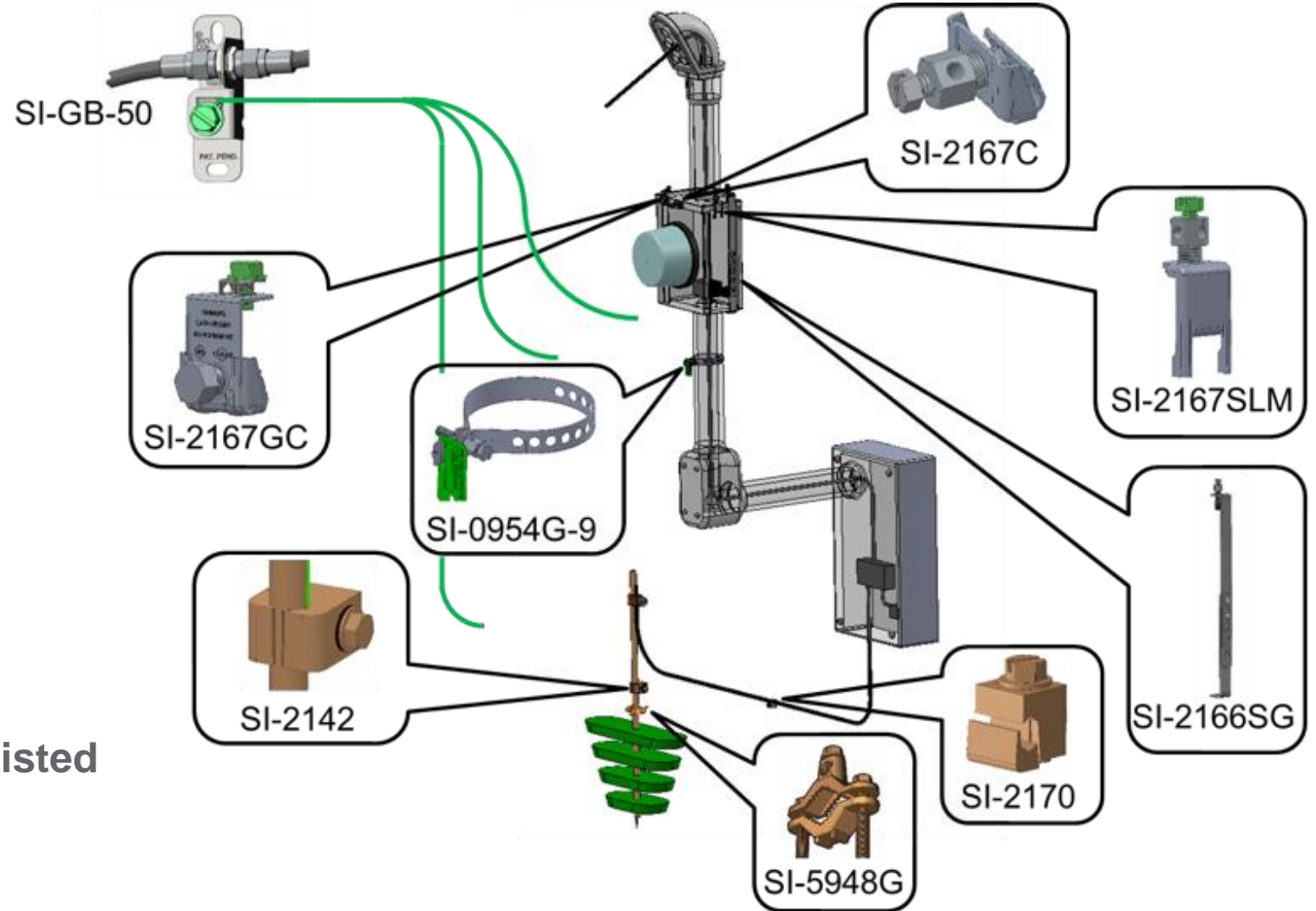


**Copper Cold Water Pipe**





# Bonding & Grounding Options



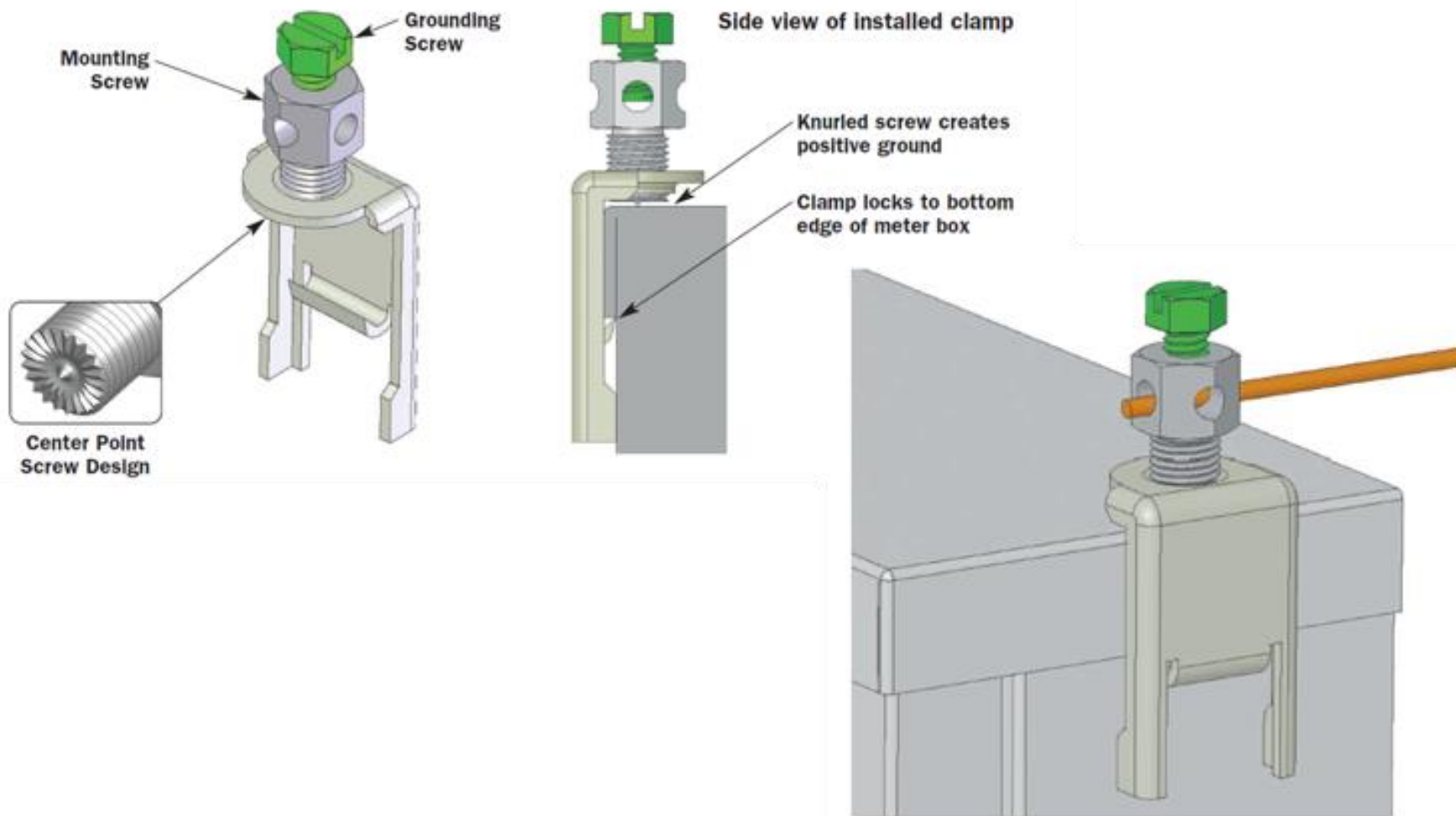
Hardware must be UL/CUL listed  
per UL467





# Product Focus - SI-2167SLM Side Mount Meter Box Clamp

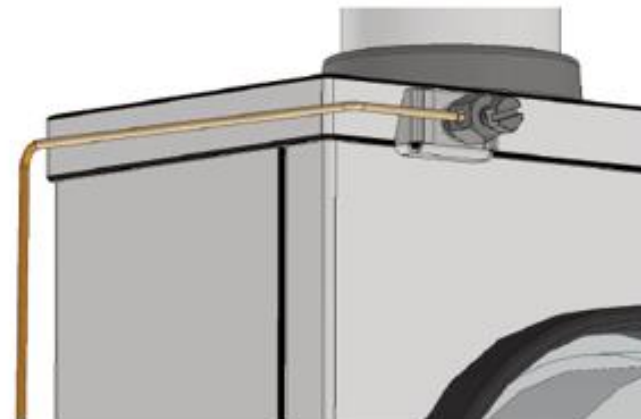
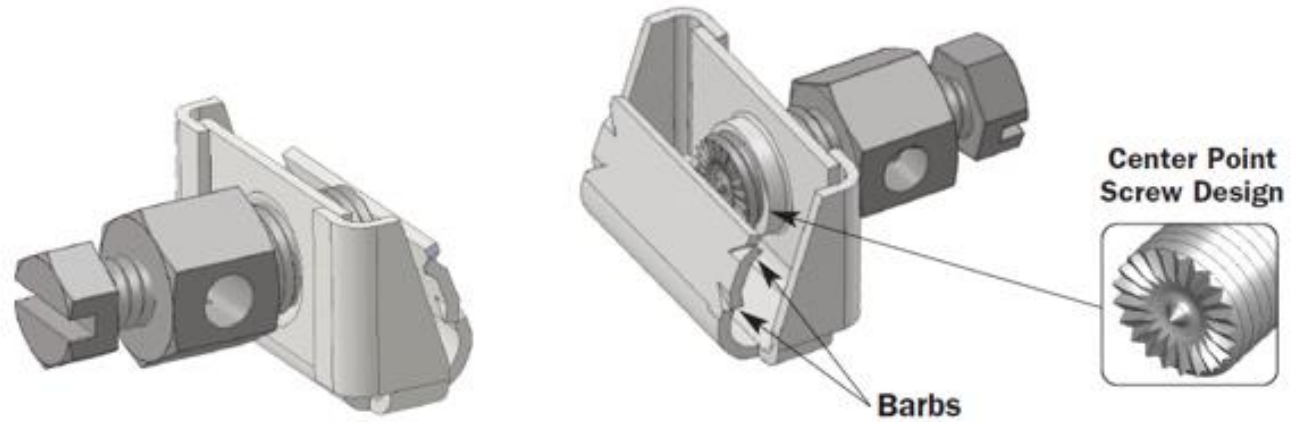
## Preferred Meter Box Clamp Option





# Product Focus - SI-2167C Front Lip Mount Meter Box Clamp

For use when the meter box is mounted flush to a wall





# Bonding & Grounding Solutions

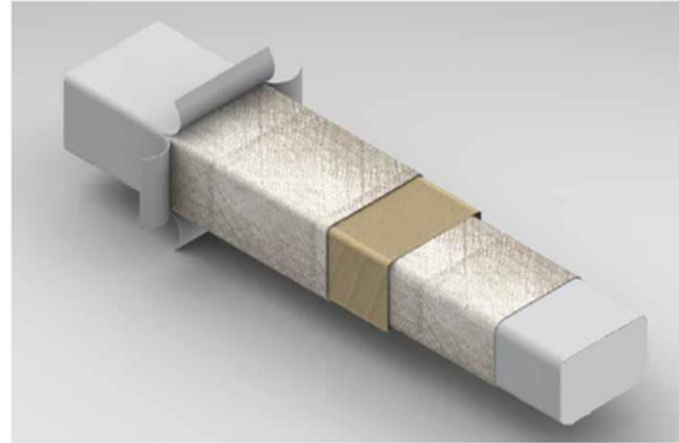
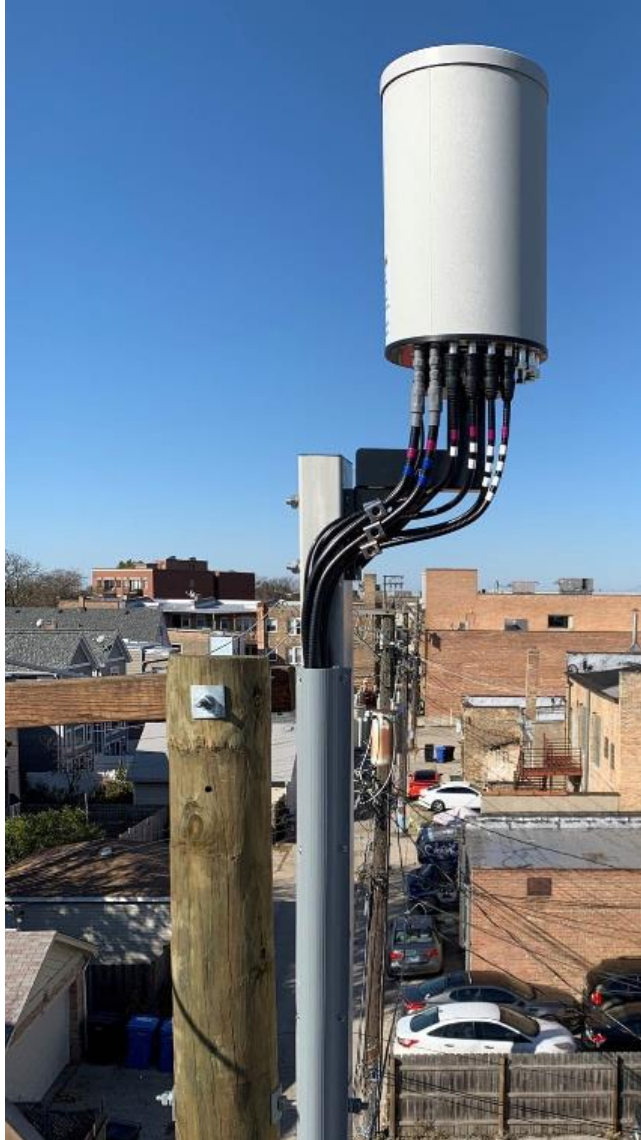
- Isolation Switch -

- Access point for tracer wire, either on a market post or in an underground hand hole / vault.
  - Patent rotational switch will toggle between an open circuit (isolating each tracer wire), and closed circuit (all terminals attached to a common ground)
  - Works with a single tool (can wrench)
- Available in several version
  - Switch colors (orange, Yellow, blue)
  - Terminal thread lengths (standard or long)
  - Number of terminals (5+ground, or 2+ground)
  - Optional vault bracket for easy mounting





# Wireless / Small Cell Solutions







# Enterprise / Data Center Solutions





# Website Overview

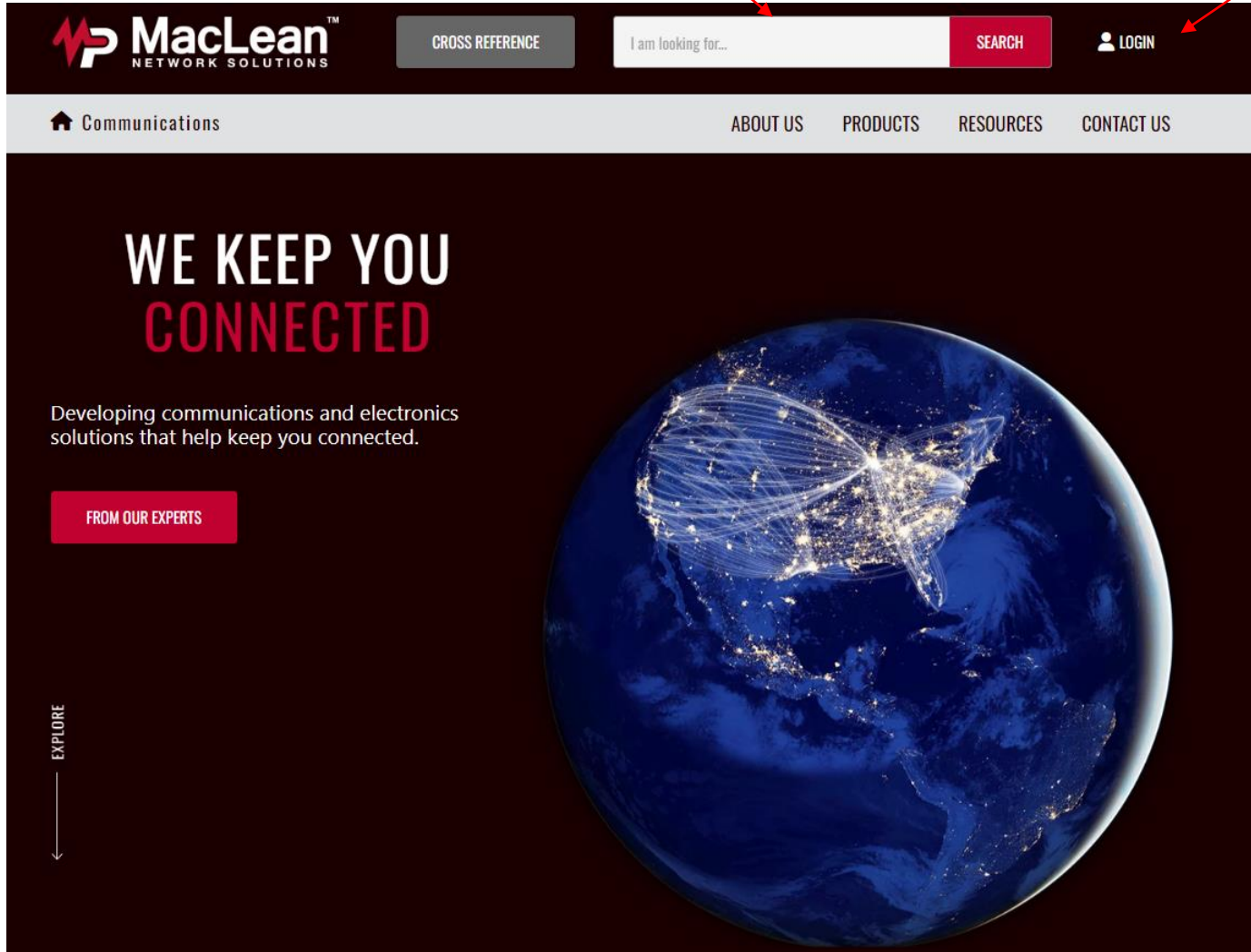
## Secured Portal Access

- Order Status
- Order Tracking

Cross Reference

Search Bar

www.macleannetworksolutions.com



## Products

- Full Catalog

## Resources

- FAQ's
- Branding Guide
- News
- Resource Library
  - Catalogs
  - Brochures
  - Posters
  - Product Bulletins
  - White Papers
  - Test Reports
- Video Library

## Contact Us

- Our Locations
- Distributor List
- Sales Rep Locator



Thank You

