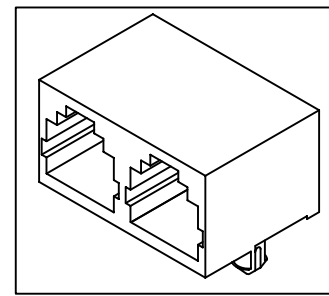
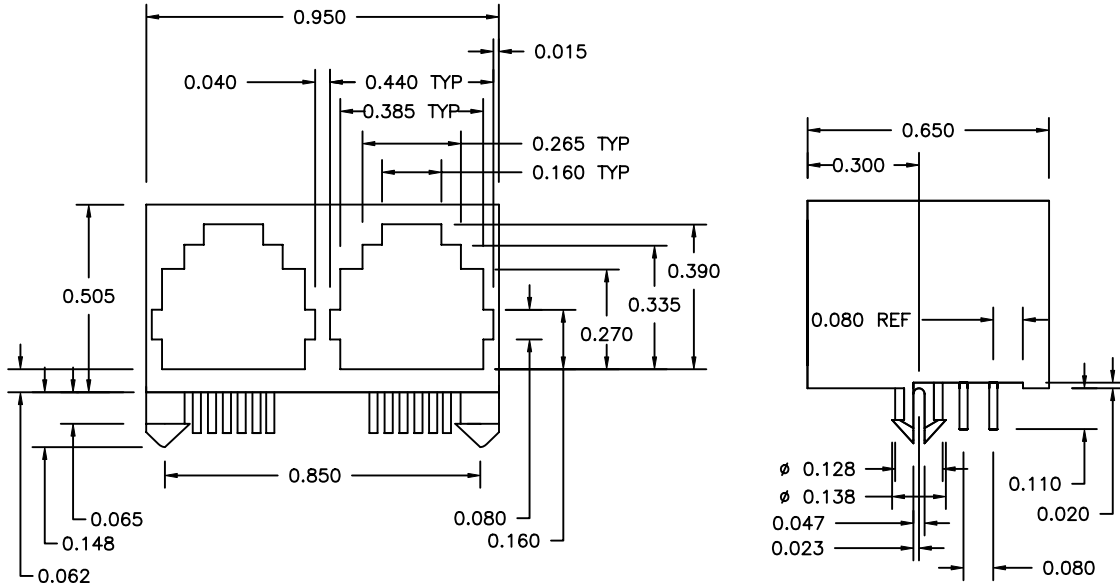
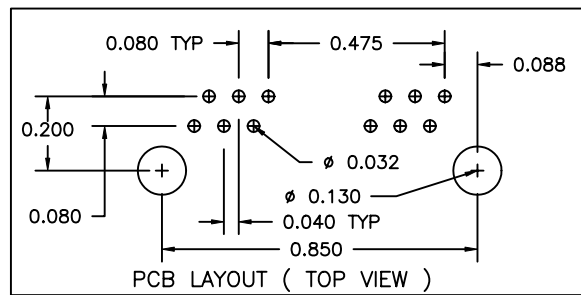


1	2	3	4	5
COMPONENT SPECIFICATION		USE OR REPRODUCTION OF THIS DRAWING FOR THE PURPOSE OF MANUFACTURING THIS ARTICLE OR ANY ARTICLES SHOWN FOR ANY PURPOSE IS STRICTLY PROHIBITED WITHOUT WRITTEN PERMISSION FROM SENIOR INDUSTRIES, INC.		

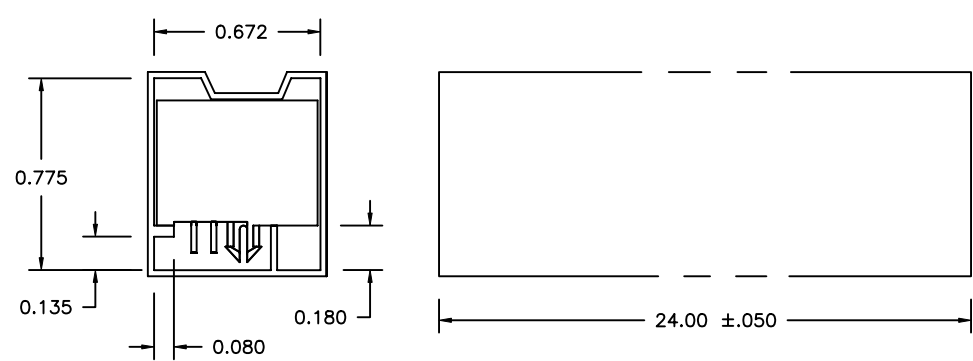
A



B



C



TUBE (SCALE 2/1)



DESIGNED:			SYM.	DATE:	DESCRIPTION OF REVISIONS:	DRAWN:	APPD:	TOLERANCE:	PART NO:	SGJ1-2XX-X		
DRAWN:	HV	11/07/96	▲	03.06.06	NEW	GAT	JF				TO 2 DECIMAL PLACE: ±.01 TO 3 DECIMAL PLACES: ±.005 AS ANGLES: ±1/2°	TITLE:
CHECKED:	GAT	08/15/07	▲	08.15.07	Corrected housing material from Nylon to PBT	GAT	JF	SHEET:	1 OF 2			
APPROVED:	JF	08/15/07	▲									
3RD ANGLE			UNIT:	IN	SCALE:	3:1	REV:	B				

1

2

3

4

5

COMPONENT SPECIFICATION

USE OR REPRODUCTION OF THIS DRAWING FOR THE PURPOSE OF MANUFACTURING THIS ARTICLE OR ANY ARTICLES SHOWN FOR ANY PURPOSE IS STRICTLY PROHIBITED WITHOUT WRITTEN PERMISSION FROM SENIOR INDUSTRIES, INC.

SPECIFICATIONS:

ELECTRICAL:

- 1. VOLTAGE RATING: 125 VAC RMS MIN.
- 2. CURRENT RATING: 1.5 AMPS MIN.
- 3. CONTACT RESISTANCE: 30 MILLIOHMS MAX.
- 4. INSULATION RESISTANCE: 500 MEGOHMS MIN. @ 500 VDC
- 5. DIELECTRIC STRENGTH: 1000 VAC RMS 60 Hz., 1 MIN.

MECHANICAL:

- 1. HOUSING MATERIAL: UL94V-0 BLACK PBT RATED TO 260°C
- 2. CONTACT MATERIAL: PHOSPHOR BRONZE OR BERYLLIUM COPPER
- 3. PLATING: a) CONTACT AREA- 50 MICROINCHES GOLD MIN. OVER 50 MICROINCHES NICKEL MIN. OR AN FCC APPROVED EQUIVALENT
b) TAILS- 50 MICROINCHES TIN MIN. OVER 50 MICROINCHES NICKEL MIN.
- 4. OPERATING LIFE: 250 CYCLES MIN.
- 5. PCB THICKNESS: 0.062"
- 6. PCB RETENTION PRE-SOLDER: 1 LB MIN.
- 7. PCB RETENTION POST-SOLDER: 15 LBS MIN.

ENVIRONMENTAL:

- 1. STORAGE: -40°C TO +85°C
- 2. OPERATION: 0°C TO 70°C

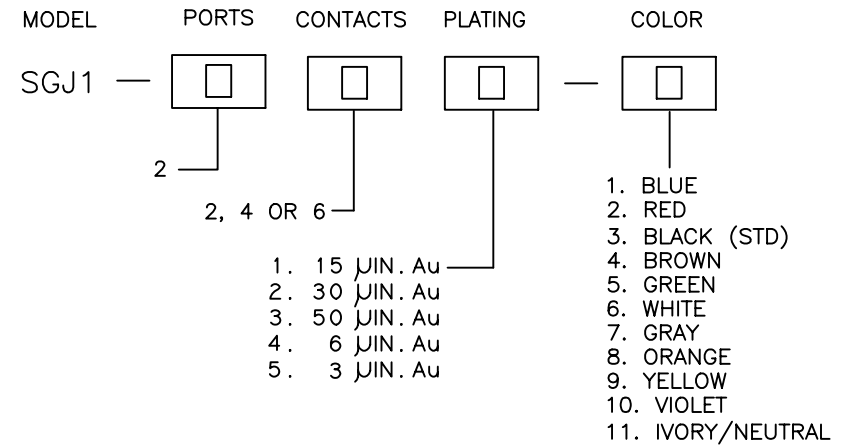
REGULATORY:

- 1. MUST BE UL & CSA
- 2. MUST MEET FCC PART 68 SUBPART F REQUIREMENTS

TUBE:

- 1. MATERIAL: ANTI-STATIC, RIGID, EXTRUDED, TRANSPARENT PLASTIC
- 2. WALL THICKNESS: 0.025" ±.005
- 3. ALL TUBE INSIDE RADII: 0.060" MAX.
- 4. PARTS MUST BE ABLE TO SLIDE OUT OF TUBE WHEN TILTED AT 30° ANGLE.
- 5. TOTAL BOW OVER TUBE LENGTH MUST NOT EXCEED 0.250"
- 6. NO OBSERVED TWISTS ACCEPTABLE
- 7. 24 PIECES PER TUBE

PART NUMBER BUILDER:



SENIOR INDUSTRIES, INC.

DESIGNED:			SYM.	DATE:	DESCRIPTION OF REVISIONS:	DRAWN:	APPD:	TOLERANCE:	PART NO:	SGJ1-2XX-X
DRAWN:	HV	11/07/96	▲	03.06.06	NEW	GAT	JF	TO 2 DECIMAL PLACE: ±	TITLE:	DUAL MODULAR JACK
CHECKED:	GAT	08/15/07	▲	08.15.07	Corrected housing material from Nylon to PBT	GAT	JF			
APPROVED:	JF	08/15/07	▲	.	.			AS ANGLES: ±	SHEET:	2 OF 2
3RD ANGLE			UNIT:	IN	SCALE:		REV:	B		