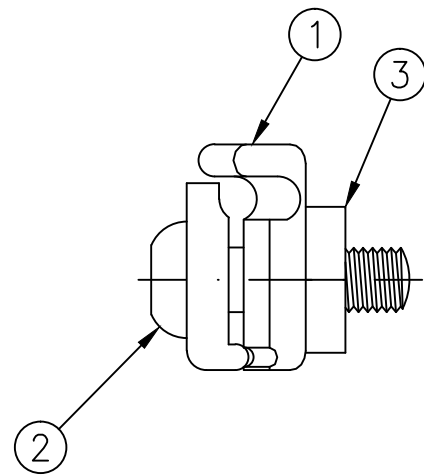
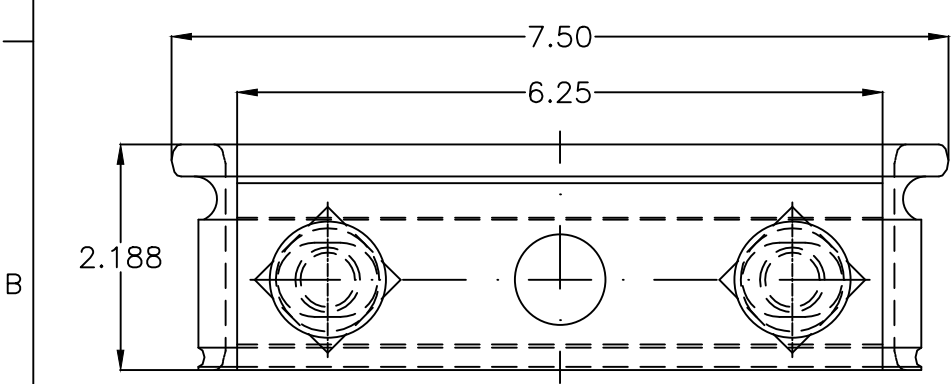
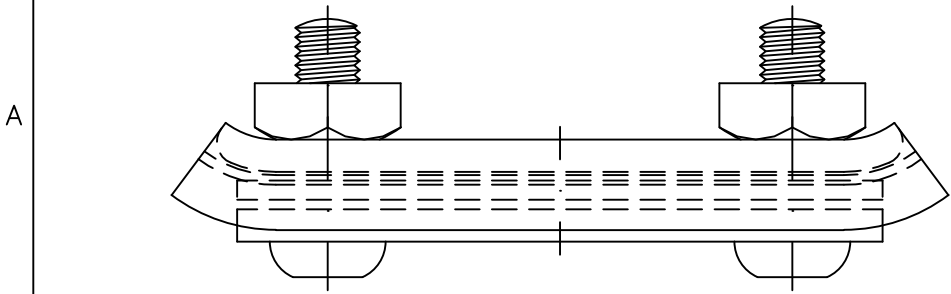


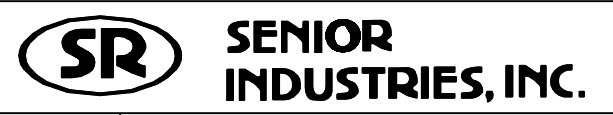
1	2	3	4	5
COMPONENT SPECIFICATION	USE OR REPRODUCTION OF THIS DRAWING FOR THE PURPOSE OF MANUFACTURING THIS ARTICLE OR ANY ARTICLES SHOWN FOR ANY PURPOSE IS STRICTLY PROHIBITED WITHOUT WRITTEN PERMISSION FROM SENIOR INDUSTRIES, INC.			

**NOTES:**

1. MATERIAL: STEEL, HOT DIP GALVANIZED PER ASTM A153
2. FOR USE WITH 1/4" (6.6M) TO 7/16" (16M) MESSENGER STRAND
3. INSTALLS TO POLE WITH 5/8" BOLT THROUGH CENTER HOLE



3	SI-5365	5/8 SQUARE NUT
2	SI-1750-3	5/8 x 2 TRACK BOLT
1	SI-1750-1. SI-1750-2	CLAMP BODY
ITEM	PART NUMBER	DESCRIPTION



DESIGNED:			SYM.	DATE:	DESCRIPTION OF REVISIONS:	DRAWN:	APPD:	TOLERANCE:	PART NO:	SI-1750
DRAWN:	RB	08/14/00	▲	08.14.00	NEW	RB		TO 2 DECIMAL PLACES:	TITLE:	ANGLE CABLE SUSPENTION CLAMP
CHECKED:			▲	11.05.04	New Index, Note added	GAT				
APPROVED:			▲	11.30.10	Add'd note 1. finish per ASTM A153	MAW	JF	TO 3 DECIMAL PLACES:	SHEET:	1 OF 1
			▲	07.31.15	Added Notes 2 & 3	MAW	JF	AS ANGLES:		
3RD ANGLE		UNIT:	IN[mm]	SCALE:	1:2	REV:	D			