

1

2

3

4

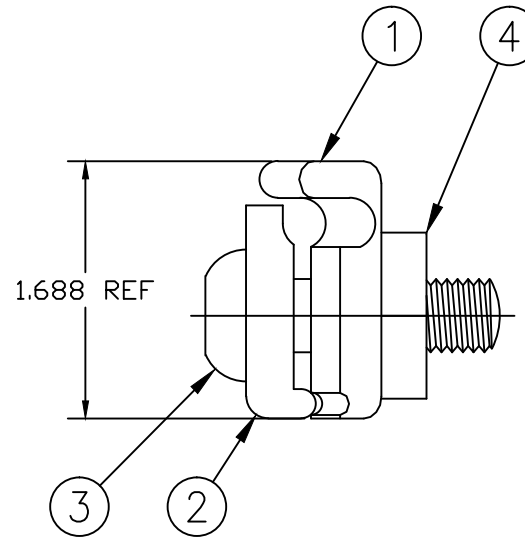
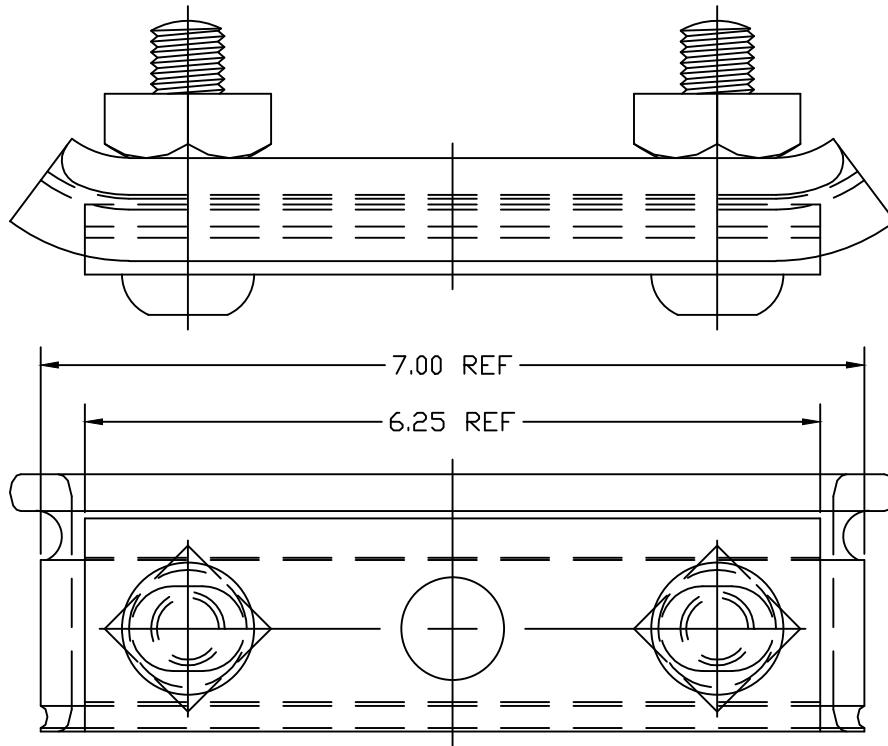
5

COMPONENT SPECIFICATION

USE OR REPRODUCTION OF THIS DRAWING FOR THE PURPOSE OF MANUFACTURING THIS ARTICLE OR ANY ARTICLES SHOWN FOR ANY PURPOSE IS STRICTLY PROHIBITED WITHOUT WRITTEN PERMISSION FROM SENIOR INDUSTRIES, INC.

NOTES:

- 1. MATERIAL: STEEL, HOT DIP GALVANIZED PER ASTM A153
- 2. FOR USE WITH 1/4" (6.6M) TO 7/16" (16M) MESSENGER STRAND
- 3. INSTALLS TO POLE WITH 5/8" BOLT THROUGH CENTER HOLE



ITEM	DESCRIPTION	PART NO.	QTY
1	CLAMP SIDE	SI-1755-1	1
2	CLAMP SIDE	SI-1755-2	1
3	1/2 x 1-5/8 TRACK BOLT	SI-1740-3	2
4	1/2 SQUARE NUT	SI-5364	2



DESIGNED:			SYM.	DATE:	DESCRIPTION OF REVISIONS:	DRAWN:	APPD:	TOLERANCE:	PART NO:	SI-1755
DRAWN:	MAW	01/23/13	▲	01.23.13	NEW	MAW	JF	TO 2 DECIMAL PLACE: ±	TITLE:	SUSPENSION CLAMP
CHECKED:	MAW	01/23/13	▲	.	.			TO 3 DECIMAL PLACES: ±	SHEET:	1 OF 1
APPROVED:	JF	01/23/13	▲	.	.			AS ANGLES: ±		
3RD ANGLE		UNIT:	inches	SCALE:	1:2	REV.	A			