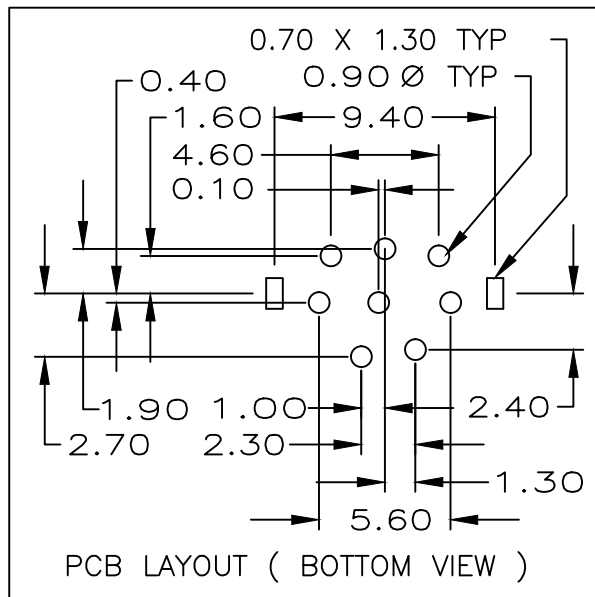
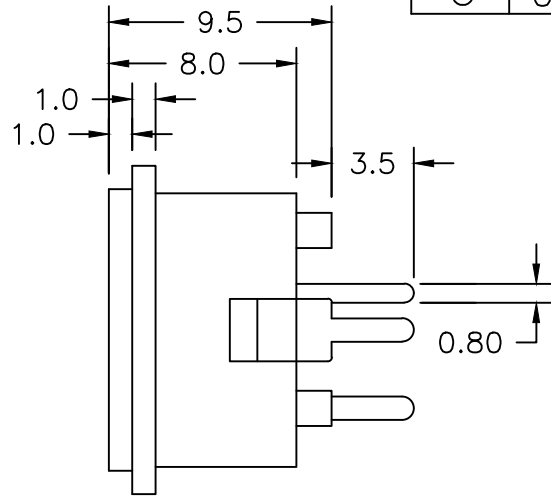
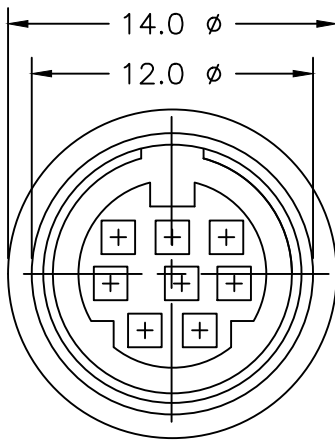


UNLESS OTHERWISE SPECIFIED, ALL DIMENSIONS ARE IN METRIC.

TO 1 DECIMAL PLACE ±.3
 TO 2 DECIMAL PLACES ±.13
 AS ANGLES ±1/2°

ISSUE	DATE
A	04/02/97
B	03/27/15
C	09/02/15



NOTE: 'X' DENOTES NUMBER OF CONTACTS

3	CONTACT	PHOSPHOR BRONZE 0.2MM THICK TERMINATION AREA - TIN PLATED CONTACT AREA - GOLD PLATED
2	GROUND	BRASS 0.4MM THICK - TIN PLATED
1	HOUSING	PBT - 30% GLASS, UL94V-0, BLACK
ITEM	DESCRIPTION	MATERIAL/FINISH



TITLE: DIN RECEPTACLE		PART NO: SI-355-X	
DATE: 03/28/97	DRAWN: HV	CHKD: JF	SCALE: 3/1
			SHEET: 1 OF 2

UNLESS OTHERWISE SPECIFIED, ALL DIMENSIONS ARE IN METRIC.

TO 1 DECIMAL PLACE \pm
TO 2 DECIMAL PLACES \pm
AS ANGLES \pm °

ISSUE	DATE
A	04/02/97
B	03/27/15
C	09/02/15

SPECIFICATIONS

ELECTRICAL

CONTACT RATING: 1A @ 100VAC, 2A @ 12VDC
CONTACT RESISTANCE: 30 MILLIOHMS MAX.
INSULATION RESISTANCE: 50 MEGOHMS MIN. AT 250 VDC
DIELECTRIC STRENGTH: 250VAC FOR 1 MINUTE

MECHANICAL

INSERTION FORCE: 1.0 – 4.5 Kg
WITHDRAWAL FORCE: 0.8 – 3.0 Kg
LIFE: 5000 CYCLES MIN.



**SENIOR
INDUSTRIES, INC.**

TITLE:

DIN RECEPTACLE

PART NO:

SI-355-X

DATE:

03/28/97

DRAWN:

HV

CHKD:

JF

SCALE:

SHEET:

2 OF 2