

COMPONENT SPECIFICATION

USE OR REPRODUCTION OF THIS DRAWING FOR THE PURPOSE OF MANUFACTURING THIS ARTICLE OR ANY ARTICLES SHOWN FOR ANY PURPOSE IS STRICTLY PROHIBITED WITHOUT WRITTEN PERMISSION FROM SENIOR INDUSTRIES, INC.

SPECIFICATIONS:

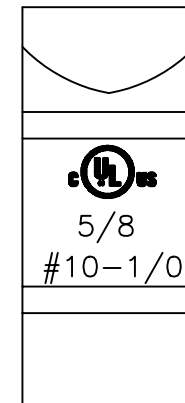
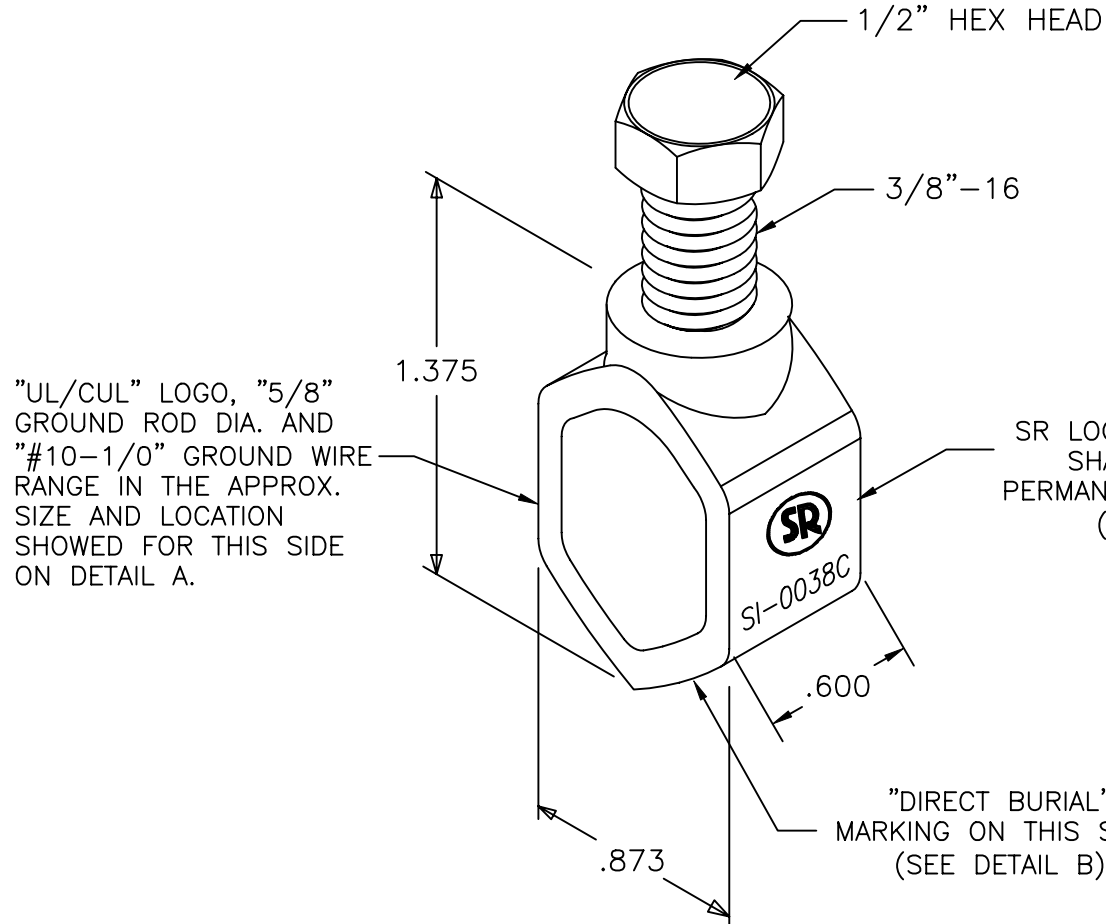
MECHANICAL:

RANGE: UP TO 5/8" DIA. COPPER GROUND ROD AND AND A WIRE RANGE FROM #10 AWG TO 1/0.

INSTALLATION TORQUE: APPROX. 120 IN-LBS MIN.
AGENCY APPROVALS: UL/CUL FILE NO. E137532

MATERIAL:

CLAMP BODY: HIGH STRENGTH BRONZE
BOLT: HIGH STRENGTH COPPER



DETAIL A
CLAMP BODY
SIDE VIEW



DETAIL B
CLAMP BODY
SIDE VIEW

SR SENIOR INDUSTRIES, INC.

DESIGNED:			SYM.	DATE:	DESCRIPTION OF REVISIONS:	DRAWN:	APPD:	TOLERANCE:	PART NO:	SI-0038C
DRAWN:	HV	06/03/98	▲	09.10.07	NEW	GAT	JF			
CHECKED:	GAT	09/10/07	▲	.	.			TO 2 DECIMAL PLACE: ±	TITLE	GROUNDING CLAMP
APPROVED:	JF	09/10/07	▲	.	.			TO 3 DECIMAL PLACES: ±	SHEET:	1 OF 1
3RD ANGLE			UNIT:	IN	SCALE:	2:1	REV.	A	AS ANGLES:	±