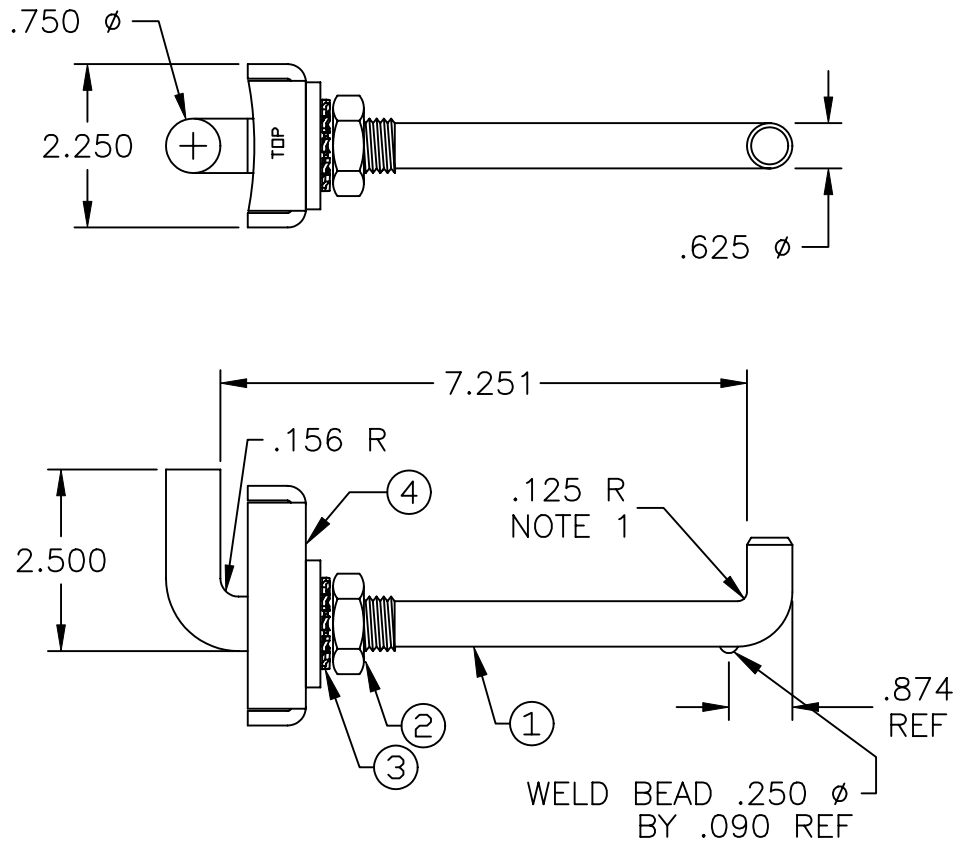


COMPONENT SPECIFICATION

USE OR REPRODUCTION OF THIS DRAWING FOR THE PURPOSE OF MANUFACTURING THIS ARTICLE OR ANY ARTICLES SHOWN FOR ANY PURPOSE IS STRICTLY PROHIBITED WITHOUT WRITTEN PERMISSION FROM SENIOR INDUSTRIES, INC.



SPECIFICATIONS:

POLE RANGE: FIBERGLASS – 12” TO 20” DIAMETER, 3/8” WALL.
STEEL – 10” DIAMETER, 7 GAGE.

STRENGTH: WHILE MOUNTED TO A POLE, THE POLE STEP SHALL:
WITHSTAND 750 LBS DOWN FORCE, APPLIED AT THE END OF THE ROD, WITHOUT FRACTURE, DEGRADATION, OR DISASSEMBLY FROM POLE.

WITHSTAND 150 LBS UPWARD FORCE, APPLIED UNDERNEATH AT THE END OF THE ROD, WITHOUT FRACTURE, DEGRADATION, OR DISASSEMBLY FROM POLE.

WITHSTAND 250 LBS SIDE TO SIDE FORCE WITHOUT FRACTURE, DEGRADATION, OR DISASSEMBLY FROM POLE.

DROP TEST: WHILE MOUNTED TO A POLE, WITHSTANDS A DROP LOAD OF 250 LBS, ATTACHED BY AN 18” CHAIN TO THE END OF THE POLE STEP, WITHOUT FRACTURE, DEGRADATION, OR DISASSEMBLY FROM POLE.

ASSEMBLY: MOUNTS INTO 13/16” DIAMETER HOLE.

NOTES:

1. BEND .125 RADIUS 90° AFTER ASSEMBLY.
2. THE HARDWARE SHALL BE ASSEMBLED TO A HAND TIGHT CONDITION, UNLESS OTHERWISE SPECIFIED. NUTS SHALL FIT SNUGLY ON FASTENERS AND SPIN FREELY THE FULL LENGTH OF THE THREADS.

4	PLATE/BUSHING ASSY	TYPE 304 SS
3	3/4” STAR WASHER	TYPE 304 SS
2	3/4”-10 HEX NUT	TYPE 304 SS
1	ROD	TYPE 202 SS
ITEM	DESCRIPTION	MATERIAL/FINISH



DESIGNED:			SYM.	DATE:	DESCRIPTION OF REVISIONS:	DRAWN:	APPD:	TOLERANCE:	PART NO:	SI-0040
DRAWN:	HV	10/12/00	▲	05.01.08	NEW	GAT	JF			
CHECKED:	GAT	09/10/09	▲	09.10.09	Corr mater. on washer & nut to 304 SS & 202 SS 4 the rod.	GAT	JF	TO 2 DEC. PLACES: ±	TITLE:	POLE STEP
APPROVED:	JF	09/10/09	▲					TO 3 DEC. PLACES: ±	SHEET:	1 OF 1
3RD ANGLE	UNIT: IN		SCALE: 1:2	REV: B	AS ANGLES: ±					