

1

2

3

4

5

COMPONENT SPECIFICATION

USE OR REPRODUCTION OF THIS DRAWING FOR THE PURPOSE OF MANUFACTURING THIS ARTICLE OR ANY ARTICLES SHOWN FOR ANY PURPOSE IS STRICTLY PROHIBITED WITHOUT WRITTEN PERMISSION FROM SENIOR INDUSTRIES, INC.

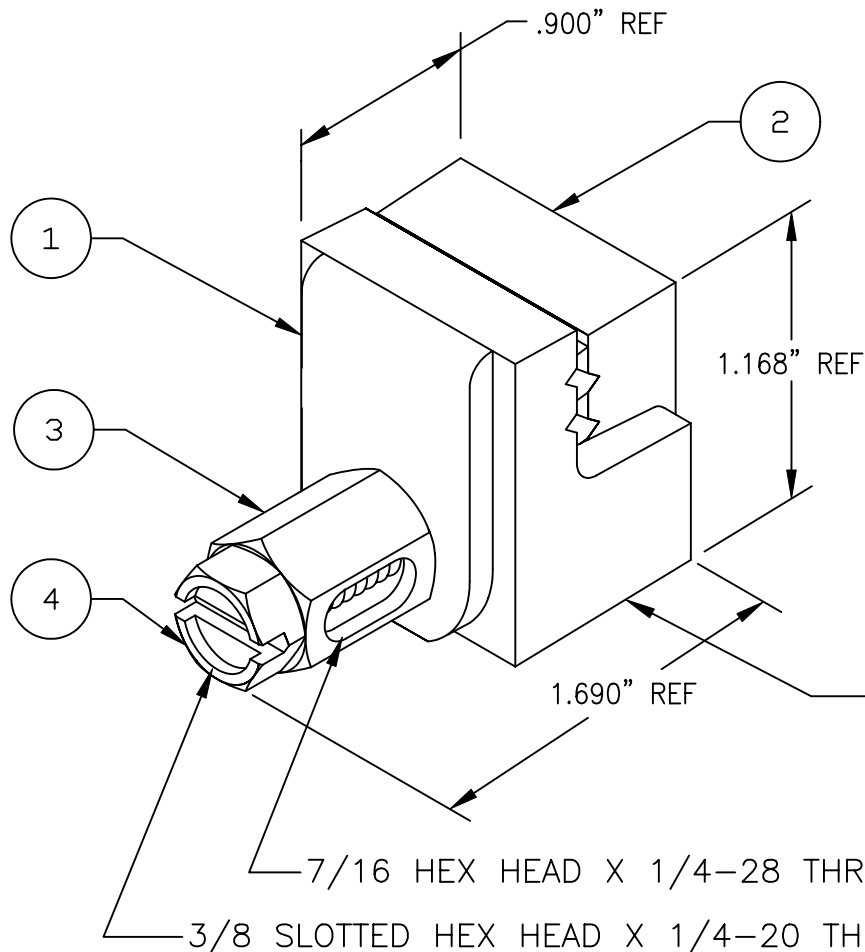
SPECIFICATIONS:

MECHANICAL:

RANGE: #6-#14 COPPER GROUND WIRE  
INSTALLATION TORQUE: APPROX. 35 IN-LBS MIN.  
AGENCY APPROVALS: UL/CUL FILE NO. E137532

MATERIAL:

BODY: BRONZE, PLAIN FINISH  
BOLT: 300 SERIES STAINLESS STEEL  
SCREW: 18-8 STAINLESS STEEL



4	SCREW	1
3	BOLT	1
2	GROUND CLAMP BODY	1
1	GROUND CLAMP BODY	1
ITEM	DESCRIPTION	QT'Y



DESIGNED:			SYM.	DATE:	DESCRIPTION OF REVISIONS:	DRAWN:	APPD:	TOLERANCE:	PART NO:	SI-2145
DRAWN:	RB	09/04/02	△	02.26.07	NEW	GAT	JF	TO 2 DECIMAL PLACE: ±	TITLE:	STRUCTURE GROUND CLAMP ASSY.
CHECKED:	GAT	02/26/07	△	.	.			TO 3 DECIMAL PLACES: ±	SHEET:	1 OF 1
APPROVED:	JF	02/26/07	△	.	.			AS ANGLES: ±		
3RD ANGLE	UNIT: IN		SCALE: 2:1	REV: A						