

COMPONENT SPECIFICATION

USE OR REPRODUCTION OF THIS DRAWING FOR THE PURPOSE OF MANUFACTURING THIS ARTICLE OR ANY ARTICLES SHOWN FOR ANY PURPOSE IS STRICTLY PROHIBITED WITHOUT WRITTEN PERMISSION FROM SENIOR INDUSTRIES, INC.

SPECIFICATIONS

MATERIAL

CONNECTOR BODY: COPPER ALLOY
 BOLT: COPPER ALLOY

MECHANICAL

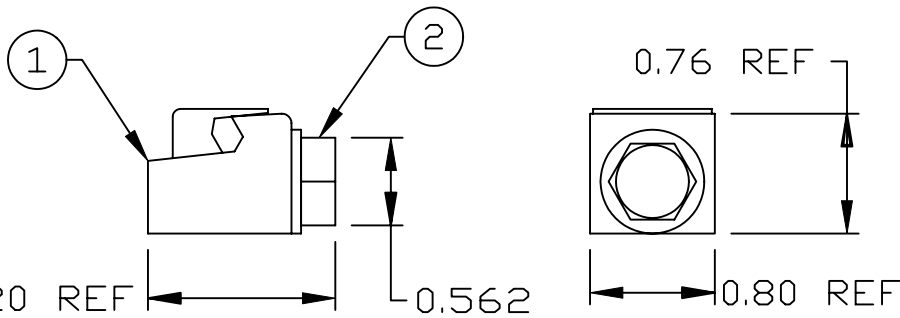
RANGE: MAXIMUM: 2 No. 4 STRANDED COPPER WIRES
 MINIMUM: 2 No. 8 SOLID COPPER WIRES
 TORQUE STRENGTH: 192 IN-LBS MIN USING NO. 4 TO NO. 4 CONDUCTORS
 GRIP STRENGTH: USING TWO NO. 4 CONDUCTORS AT AN INSTALLED TORQUE OF 12 IN-LBS, THE CONNECTOR WITHSTANDS 35 LBS PULL FORCE, APPLIED TO ONE OF THE CONDUCTORS, WITHOUT SLIPPAGE

ELECTRICAL

1500 AMPS FOR 20 SECONDS MIN. WITHOUT FAILURE USING TWO NO.4 CONDUCTORS AT AN INSTALLED TORQUE OF 12 IN-LBS

AGENCY APPROVALS

UL FILE No. E137532



2	5/16-24 X 1 UNSLOTTED HEX WASHER HEAD BOLT
1	CONNECTOR BODY (2 PCS)
REF	DESCRIPTION



SENIOR INDUSTRIES, INC.

DESIGNED:			SYM.	DATE:	DESCRIPTION OF REVISIONS:	DRAWN:	APPD:	TOLERANCE:	PART NO:	SI-2169
DRAWN:	HV	12/10/85	▲	12.10.85	NEW	HV	TF	TO 2 DECIMAL PLACE: ±	TITLE:	GROUNDING CONNECTOR
CHECKED:	TF	12/10/85	▲	02.11.11	updated to new format	MAW	JF			
APPROVED:	TF	12/10/85	▲					AS ANGLES: ±1/2°	SHEET:	1 OF 1
3RD ANGLE		UNIT:	inches	SCALE:		REV.	B			