

1

2

3

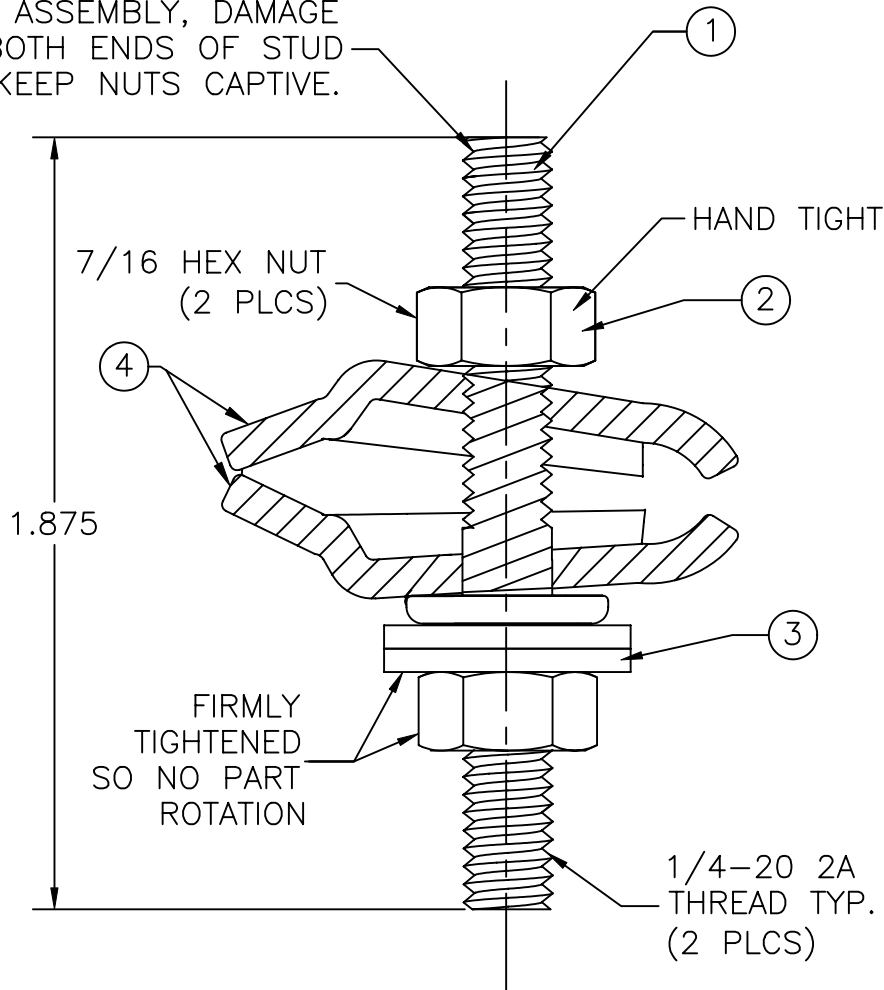
4

5

COMPONENT SPECIFICATION

USE OR REPRODUCTION OF THIS DRAWING FOR THE PURPOSE OF MANUFACTURING THIS ARTICLE OR ANY ARTICLES SHOWN FOR ANY PURPOSE IS STRICTLY PROHIBITED WITHOUT WRITTEN PERMISSION FROM SENIOR INDUSTRIES, INC.

AFTER ASSEMBLY, DAMAGE BOTH ENDS OF STUD TO KEEP NUTS CAPTIVE.



SPECIFICATIONS:

MECHANICAL:

RANGE: ACCEPTS 1/4" MESSENGER STRAND
INSTALLATION TORQUE: APPROX. 20 FT-LBS MIN.

MATERIAL:

- STUD - CARBON STEEL, GRADE 5, ANNEALED; FINISH: HOT DIP GALVANIZE PER ASTM A-153.
- NUT - MILD STEEL, GALVANIZED PER ASTM A-153 OR B-695, EXCEPT THREAD AREA
- WASHER - .065" THICK MILD STEEL, HOT DIP GALVANIZE PER ASTM A-153
- CLAMP - .100" GALVANIZED STEEL

4	CLAMP	1
3	9/32 WASHER	2
2	1/4-20 NUT	2
1	STUD	1
ITEM	DESCRIPTION	Q'TY



DESIGNED:			SYM.	DATE:	DESCRIPTION OF REVISIONS:	DRAWN:	APPD:
DRAWN:	HV	05/26/06	△	02.21.07	NEW	GAT	JF
CHECKED:	GAT	02/21/07	△	.			
APPROVED:	JF	02/21/07	△	.			

TOLERANCE:	PART NO:	SI-2176
TO 2 DECIMAL PLACE: ±	TITLE:	LASHING WIRE CLAMP
TO 3 DECIMAL PLACES: ±	SHEET:	1 OF 1
AS ANGLES: ±		

3RD ANGLE	UNIT:	IN	SCALE:	3:1	REV:	A
-----------	-------	----	--------	-----	------	---