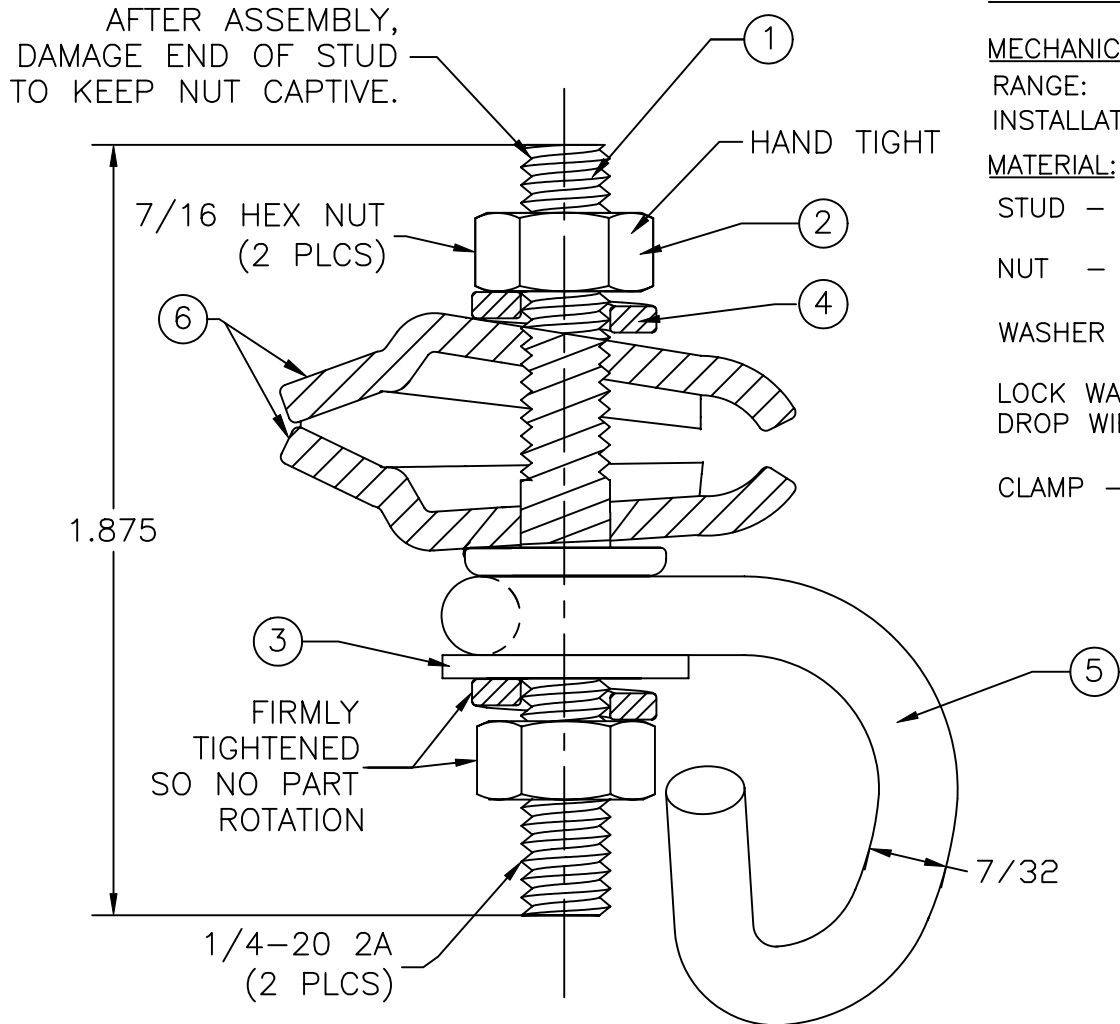


COMPONENT SPECIFICATION

USE OR REPRODUCTION OF THIS DRAWING FOR THE PURPOSE OF MANUFACTURING THIS ARTICLE OR ANY ARTICLES SHOWN FOR ANY PURPOSE IS STRICTLY PROHIBITED WITHOUT WRITTEN PERMISSION FROM SENIOR INDUSTRIES, INC.

AFTER ASSEMBLY, DAMAGE END OF STUD TO KEEP NUT CAPTIVE.



SPECIFICATIONS:

MECHANICAL:

RANGE: ACCEPTS 1/4" MESSENGER STRAND
 INSTALLATION TORQUE: APPROX. 20 FT-LBS MIN.

MATERIAL:

STUD - CARBON STEEL, GRADE 5, ANNEALED; FINISH: HOT DIP GALVANIZE PER ASTM A-153.
 NUT - MILD STEEL, GALVANIZED PER ASTM A-153 OR B-695, EXCEPT THREAD AREA
 WASHER - .065" THICK MILD STEEL, HOT DIP GALVANIZE PER ASTM A-153
 LOCK WASHER - STAINLESS STEEL
 DROP WIRE HOOK - STEEL, HOT DIP GALVANIZE PER ASTM A-153 OR MECHANICAL GALVANIZING PER ASTM B-695
 CLAMP - .100" GALVANIZED STEEL

6	CLAMP	1
5	DROP WIRE HOOK	1
4	1/4" LOCK WASHER	2
3	9/32 WASHER	1
2	1/4-20 NUT	2
1	STUD	1
ITEM	DESCRIPTION	Q'TY



SENIOR INDUSTRIES, INC.

DESIGNED:			SYM:	DATE:	DESCRIPTION OF REVISIONS:	DRAWN:	APPD:	TOLERANCE:	PART NO:	SI-2176T
DRAWN:	HV	05/26/06	△	01.09.07	NEW	GAT	JF			
CHECKED:	GAT	01/09/07	△	.	.			TO 2 DECIMAL PLACE: ±	TITLE:	SPAN CLAMP
APPROVED:	JF	01/09/07	△	.	.			TO 3 DECIMAL PLACES: ±	SHEET:	1 OF 1
3RD ANGLE	UNIT: IN		SCALE: 3:1	REV: A	AS ANGLES: ±					