

COMPONENT SPECIFICATION

USE OR REPRODUCTION OF THIS DRAWING FOR THE PURPOSE OF MANUFACTURING THIS ARTICLE OR ANY ARTICLES SHOWN FOR ANY PURPOSE IS STRICTLY PROHIBITED WITHOUT WRITTEN PERMISSION FROM SENIOR INDUSTRIES, INC.

SPECIFICATIONS:

ELECTRICAL:

CONTACT RATING:

3 CONTACT	15A @ 125VAC
4 CONTACT	10A @ 125VAC
5 CONTACT	7.5A @ 125VAC
7 CONTACT	5A @ 125VAC

CONTACT RESISTANCE: 5 MILLIOHMS MAX.

INSULATION RESISTANCE: 5000 MEGOHMS MIN.  
@ 500VDC

DIELECTRIC STRENGTH: 1400VAC

CAPACITANCE:

3 CONTACT	4pF MAX.
4 CONTACT	7pF MAX.
5 CONTACT	7pF MAX.
7 CONTACT	9pF MAX.

MECHANICAL:

INSERTION FORCE: 1.0 - 8.0 Kg

WITHDRAWAL FORCE: 1.0 - 8.0 Kg

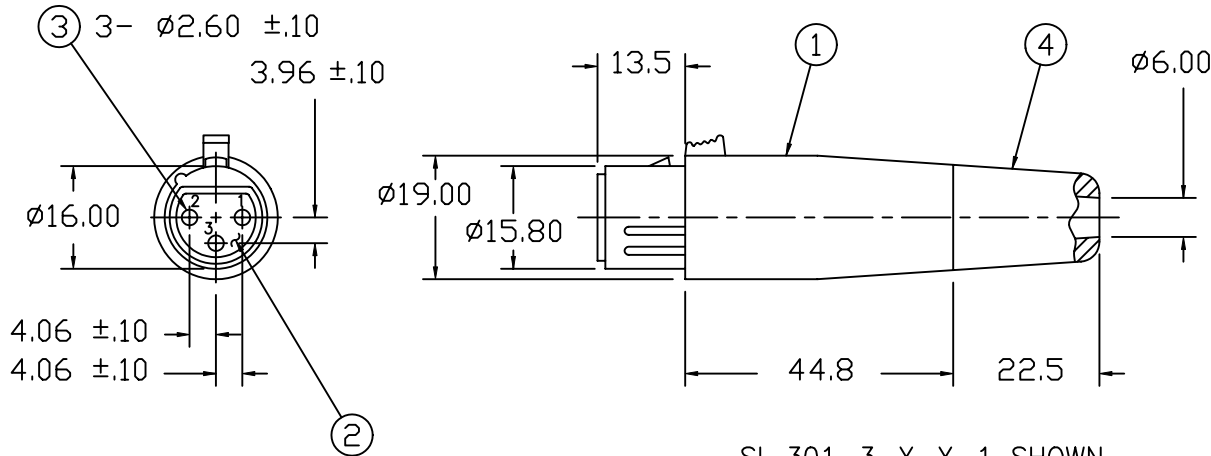
ENVIRONMENTAL:

OPERATING TEMPERATURE: -55°C TO +70°C

DRAWING NUMBER	NUMBER OF SOCKETS
-3-X-X	3
-4-X-X	4
-5-X-X	5
-7-X-X	7



**SENIOR INDUSTRIES, INC.**



SI-301-3-X-X-1 SHOWN

NOTES:

1. 2nd 'X' IN PART NUMBER DENOTES HOUSING FINISH:  
N-NICKEL; B-BLACK NICKEL
2. 3rd 'X' IN PART NUMBER DENOTES SOCKETS PLATING:  
1-SILVER; 3-GOLD
3. HOUSING HAS BRUSHED FINISH.
4. SET SCREWS REMAIN CAPTIVE TO HOUSING.

ITEM	PART	QT'Y	MATERIAL/FINISH
1	HOUSING	1	ZINC DIE-CAST; NICKEL OR BLACK NICKEL PLATED
2	INSERT INSULATOR	1	PPT; GRAY
3	SOCKET	3	PHOSPHOR BRONZE; SILVER OR GOLD PLATED
4	CABLE RELIEF	1	NYLON; BLACK

DESIGNED:	DRAWN:	CHECKED:	APPROVED:	SYM.	DATE:	DESCRIPTION OF REVISIONS:	DRAWN:	APPD:
	KRM	JF	JF	▲	09.01.93	NEW	JF	JF
				▲	04.04.94	Notes added.	JF	JF
				▲	07.06.05	Notes corr'd, Spec info added, Material spec corr	GAT	JF
				▲	.	.		
				▲	.	.		

TOLERANCE:

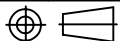
TO 1 DECIMAL PLACE: ±.4

TO 2 DECIMAL PLACES: ±.20

AS ANGLES: ±

PART NO:	SI-301-X-X-X-1
TITLE:	XLR PLUG
SHEET:	1 OF 1

3RD ANGLE



UNIT:

mm

SCALE:

1:1

REV:

C