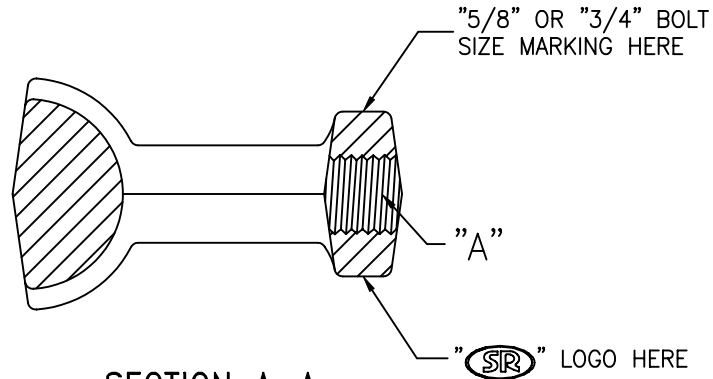


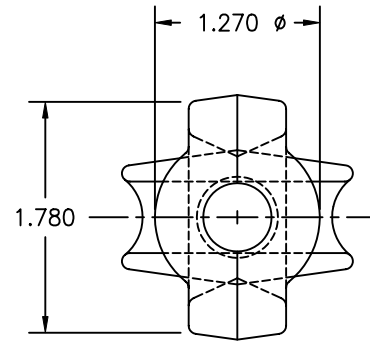
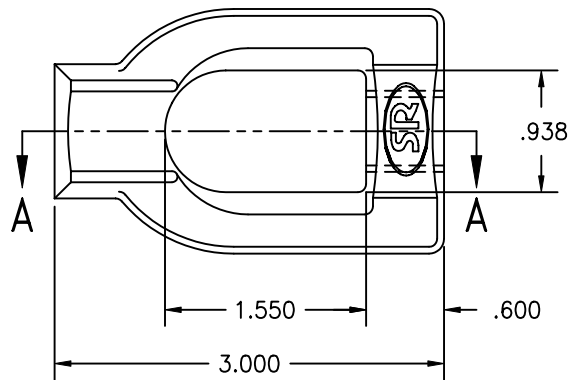
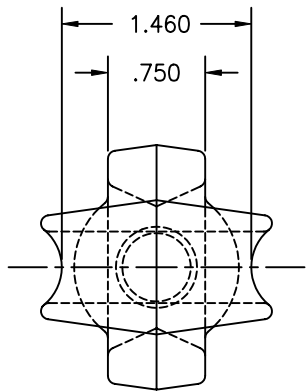
UNLESS OTHERWISE SPECIFIED, ALL DIMENSIONS ARE IN INCHES.

TO 2 DEC. PLS. :  
TO 3 DEC. PLS. :  
AS ANGLES :±1/2'

ISSUE	DATE
A	05/19/08



SECTION A-A



SPECIFICATIONS:

MECHANICAL:

RANGE: ACCEPTS A 1/2" MAX. STRAND.

TENSION LOAD:

BOLT SIZE:	TEST LOAD:
5/8	12,400 LBS WITHOUT DEGRADATION
3/4	18,300 LBS WITHOUT DEGRADATION

ASSEMBLY MOUNT TO POLE:

USING A 5/8" (3/4") DIA BOLT THROUGH THE BOLT HOLE.

MATERIAL: MALLEABLE IRON OR DUCTILE IRON

FINISH: HOT DIP GALVANIZED PER ASTM A-153

NOTES:

1. THREADS SHALL BE CONCENTRIC WITH THE AXIS OF THE NUT AND SHALL NOT BE GALVANIZED.
2. ALL THREADS SHALL BE FULL AND FREELY ACCEPT A GALVANIZED BOLT AND FIT MUST BE SNUG.

SI-4406	3/4"	3/4-10 UNC-2B
SI-4405	5/8"	5/8-11 UNC-2B
PART NUMBER	BOLT SIZE	"A" - TAP TYPE



TITLE:	THIMBLE EYE NUT		PART NO:		SEE CHART
DATE:	05/19/08	DRAWN:	GAT	CHKD:	JF
SCALE:	1/1	SHEET:	1 OF 1		