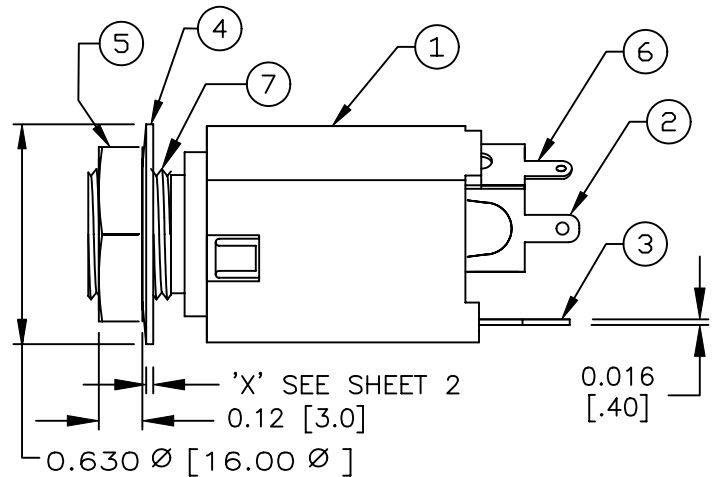
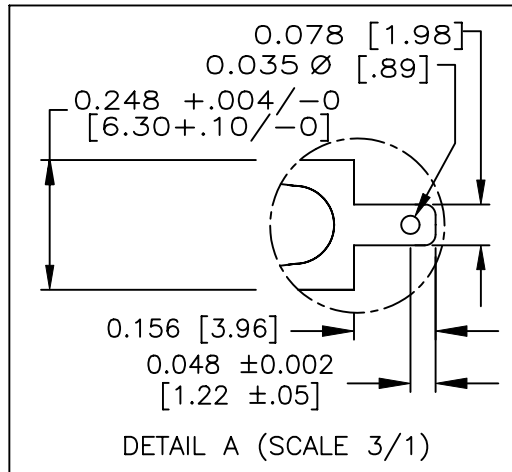
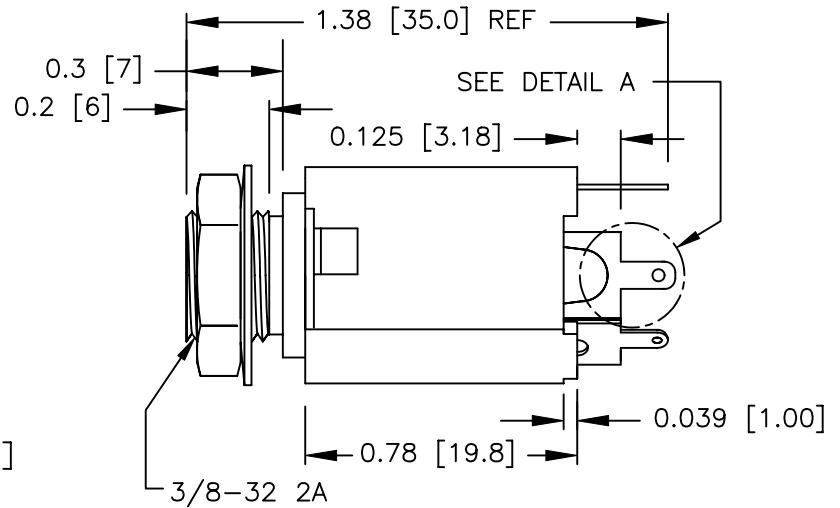
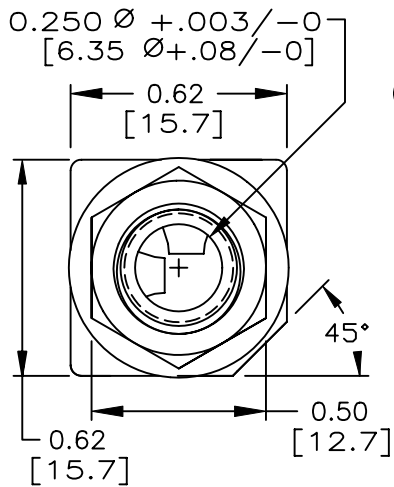


1

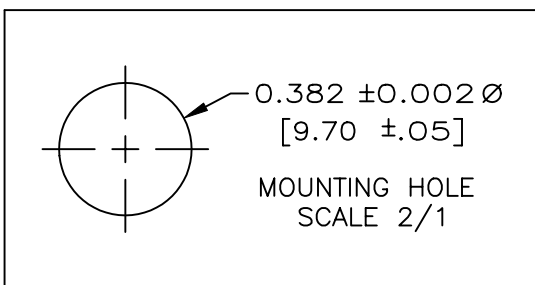
2

3

4

COMPONENT
SPECIFICATIONUSE OR REPRODUCTION OF THIS DRAWING FOR THE PURPOSE OF MANUFACTURING THIS
ARTICLE OR ANY ARTICLES SHOWN FOR ANY PURPOSE IS STRICTLY PROHIBITED WITHOUT
WRITTEN PERMISSION FROM SENIOR INDUSTRIES, INC.

SI-507P-3-X SHOWN



7	BUSHING	BRASS, NICKEL PLATED
6	SLEEVE TERMINAL	BRASS - TIN PLATED
5	HEX NUT	BRASS - NICKEL PLATED
4	WASHER	BRASS - NICKEL PLATED
3	TIP SPRING	BRONZE - TIN PLATED
2	RING SPRING	BRONZE - TIN PLATED
1	HOUSING	ABS, UL94V-0
ITEM	DESCRIPTION	MATERIAL/FINISH

DESIGNED:

SYM.

DATE:

DESCRIPTION OF REVISIONS:

DRAWN

APPD.

DRAWN:

HV

11/17/97

▲

01.04.96

NEW

JF

JF

CHECKED:

GAT

10/12/05

▲

05.23.96

Corr left view to show terminal location through hole

JF

JF

APPROVED:

JF

10/12/05

▲

11.17.97

Redrawn to new print; -X added = Schematic

TF

JF

▲

12.09.98

PCB tol.; 2nd X added=washer thickness options

JAC

JF

▲

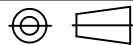
10.07.05

New Indicator, T1 showed for No6 Schematic choice

GAT

JF

3RD ANGLE



UNIT:

IN[mm]

SCALE:

2:1

REV.

E

SENIOR
INDUSTRIES, INC.

TOLERANCE:

TO 1 DECIMAL PLACE: ±.015 [.40]

TO 2 DECIMAL PLACES: ±.010 [.30]

TO 3 DECIMAL PLACES: ±.006 [.15]

SHEET:

PART NO:

SI-507P-X-X

TITLE:

ENCLOSED PHONE JACK

1 OF 2

