

1

2

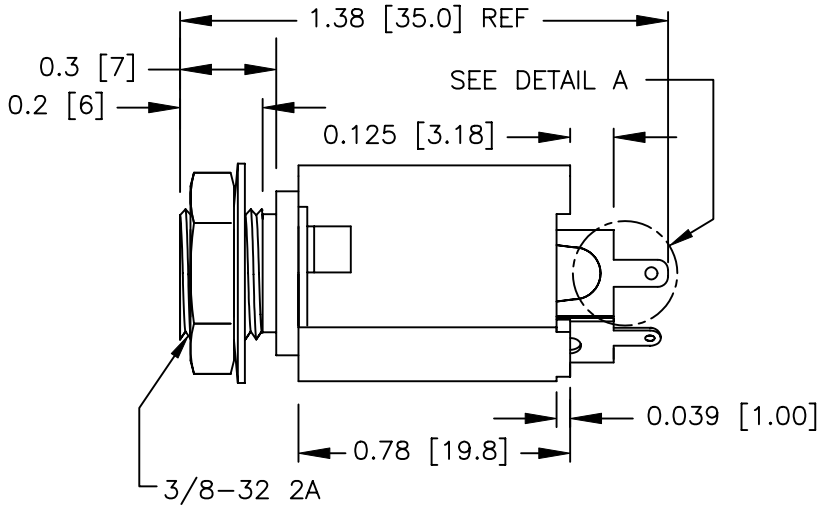
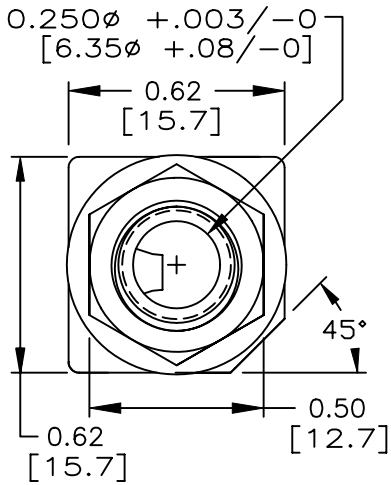
3

4

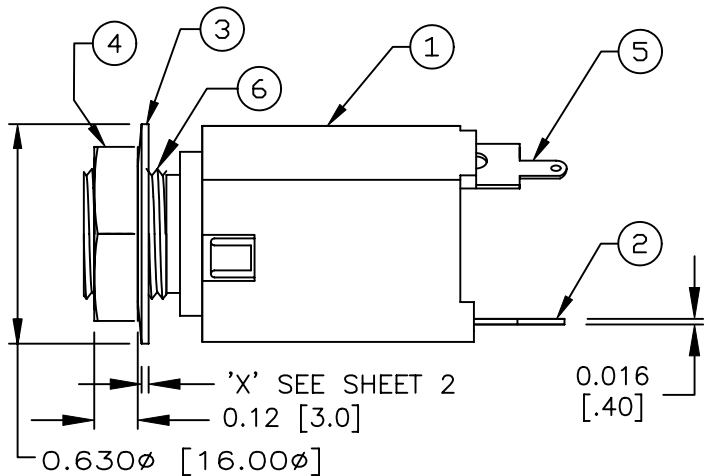
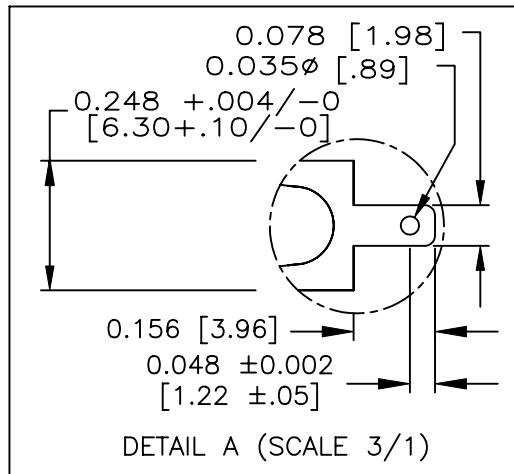
COMPONENT SPECIFICATION

USE OR REPRODUCTION OF THIS DRAWING FOR THE PURPOSE OF MANUFACTURING THIS ARTICLE OR ANY ARTICLES SHOWN FOR ANY PURPOSE IS STRICTLY PROHIBITED WITHOUT WRITTEN PERMISSION FROM SENIOR INDUSTRIES, INC.

A



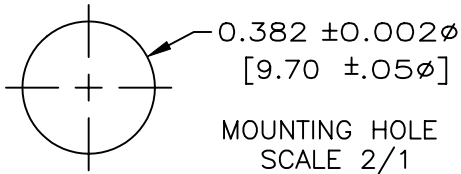
B



SI-508P-1-X SHOWN

C

D

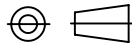


6	BUSHING	ABS, UL94V-0
5	SLEEVE TERMINAL	BRASS - TIN PLATED
4	HEX NUT	BRASS - NICKEL PLATED
3	WASHER	BRASS - NICKEL PLATED
2	TIP SPRING	BRONZE - TIN PLATED
1	HOUSING	ABS, UL94V-0
ITEM	DESCRIPTION	MATERIAL/FINISH

DESIGNED:			SYM.	DATE:	DESCRIPTION OF REVISIONS:	DRAWN	APPD.
DRAWN:	HV	11/17/97	▲	11.28.95	NEW	JF	JF
CHECKED:	GAT	10/12/05	▲	11.17.97	Redrawn new print; -X added=Schem.; Remd Brass, Ni pl fr Hous.	TF	JF
APPROVED:	JF	10/12/05	▲	01.18.99	2nd X added = hardware options	TF	JF
			▲	11.07.05	New Indicator, T1 showed for No6 Schematic choice	GAT	JF

E

3RD ANGLE



UNIT:

IN[mm]

SCALE:

2:1

REV.

D



TOLERANCE:

TO 1 DECIMAL PLACE:	±.015 [ .40]
TO 2 DECIMAL PLACES:	±.010 [ .30]
TO 3 DECIMAL PLACES:	±.006 [ .15]

SHEET:

PART NO:

SI-508P-X-X

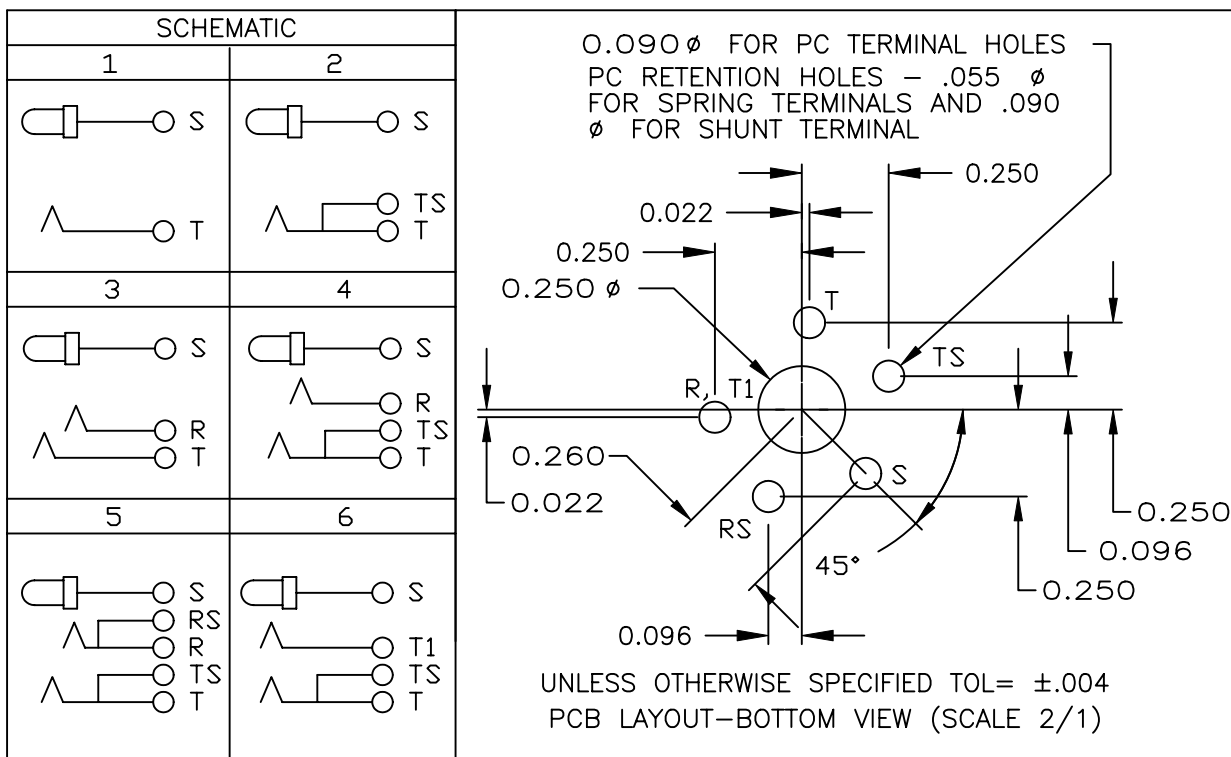
TITLE:

ENCLOSED PHONE JACK

1 OF 2

COMPONENT SPECIFICATION

USE OR REPRODUCTION OF THIS DRAWING FOR THE PURPOSE OF MANUFACTURING THIS ARTICLE OR ANY ARTICLES SHOWN FOR ANY PURPOSE IS STRICTLY PROHIBITED WITHOUT WRITTEN PERMISSION FROM SENIOR INDUSTRIES, INC.



SPECIFICATIONS:

ELECTRICAL:

CONTACT RATING: 0.25A AT 48 VDC  
 CONTACT RESISTANCE: 20 MILLIOHMS MAX. INITIAL, 50 MILLIOHMS MAX. AFTER LIFE  
 INSULATION RESISTANCE: 50,000 MEGOHMS MIN. AT 500 VDC  
 DIELECTRIC STRENGTH: 500 VAC FOR ONE MINUTE

MECHANICAL:

INSERTION FORCE: 0.5 TO 3.0 Kg  
 WITHDRAWAL FORCE: 0.5 TO 3.0 Kg  
 OPERATING LIFE: 10,000 CYCLES

ENVIRONMENTAL:

OPERATING TEMPERATURE: -40°C TO 80°C

NOTES:

FIRST 'X' IN PART NUMBER DENOTES SCHEMATIC: SEE TABLE ABOVE  
 SECOND 'X' IN PART NUMBER DENOTES HARDWARE OPTION:  
 BLANK= 0.030" [.76mm] FLAT WASHER, NICKEL PLATED WITH STANDARD NUT.  
 1 = 0.040" [1.01mm] FLAT WASHER, NICKEL PLATED, WITH STANDARD NUT.  
 2 = NO WASHER WITH BLACK NICKEL PLATED NUT

DESIGNED:			SYM.	DATE:	DESCRIPTION OF REVISIONS:	DRAWN	APPD.
DRAWN:	HV	11/17/97	$\Delta$	11.28.95	NEW	JF	JF
CHECKED:	GAT	10/12/05	$\Delta$	11.17.97	Redrawn new print; -X added=Schem.; Remd Brass, Ni pl fr Hous.	TF	JF
APPROVED:	JF	10/12/05	$\Delta$	01.18.99	2nd X added = hardware options	TF	JF
			$\Delta$	11.07.05	New Indicator, T1 showed for No6 Schematic choice	GAT	JF

3RD ANGLE		UNIT:	IN[mm]	SCALE:	REV.	D
-----------	--	-------	--------	--------	------	---



TOLERANCE:	PART NO: SI-508P-X-X
TO 1 DECIMAL PLACE: $\pm 0.015$ [.40]	TITLE: ENCLOSED PHONE JACK
TO 2 DECIMAL PLACES: $\pm 0.010$ [.30]	
TO 3 DECIMAL PLACES: $\pm 0.006$ [.15]	
SHEET:	2 OF 2