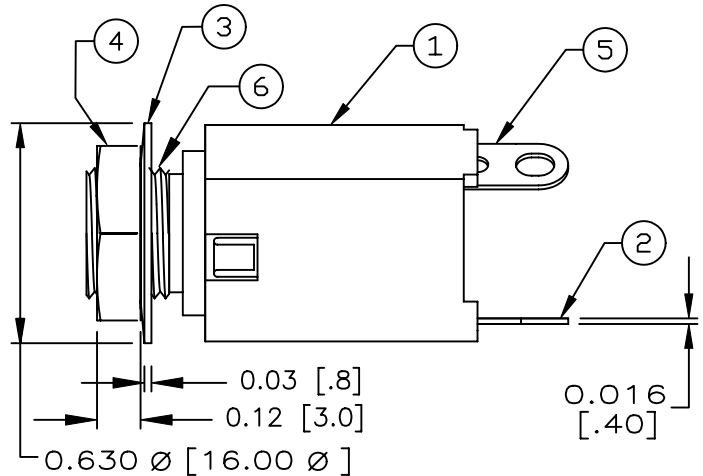
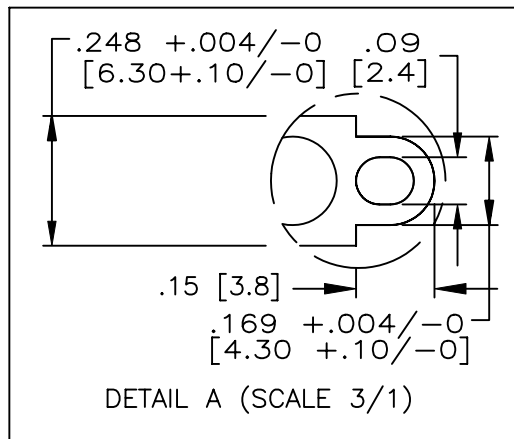
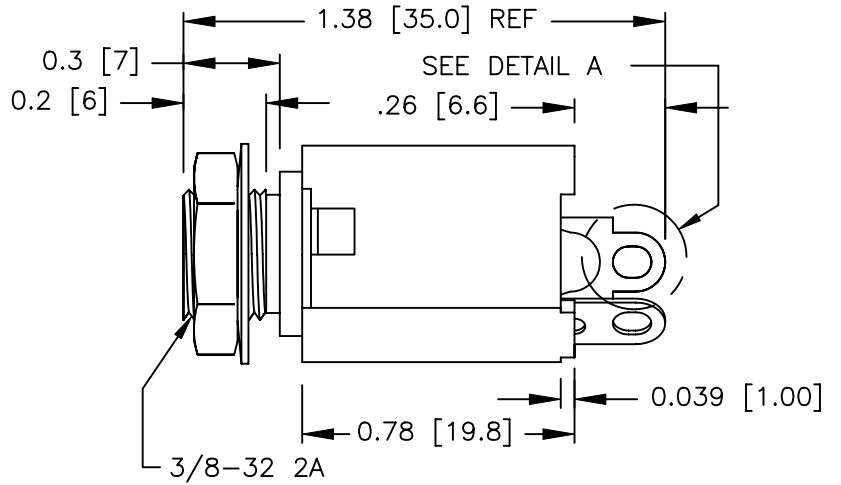
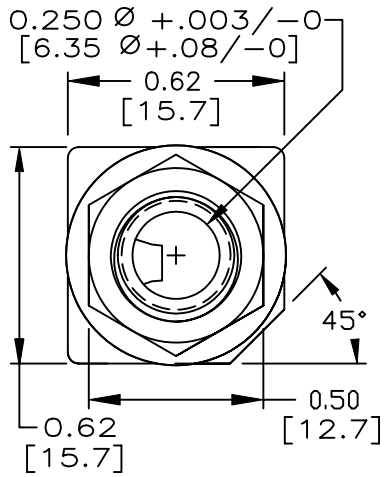
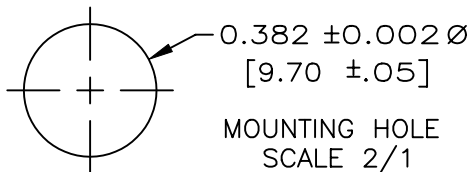


COMPONENT SPECIFICATION

USE OR REPRODUCTION OF THIS DRAWING FOR THE PURPOSE OF MANUFACTURING THIS ARTICLE OR ANY ARTICLES SHOWN FOR ANY PURPOSE IS STRICTLY PROHIBITED WITHOUT WRITTEN PERMISSION FROM SENIOR INDUSTRIES, INC.



SI-508-1 SHOWN



6	BUSHING	ABS, UL94V-0
5	SLEEVE TERMINAL	BRASS - TIN PLATED
4	HEX NUT	BRASS - NICKEL PLATED
3	WASHER	BRASS - NICKEL PLATED
2	TIP SPRING	BRONZE - TIN PLATED
1	HOUSING	ABS, UL94V-0
ITEM	DESCRIPTION	MATERIAL/FINISH

DESIGNED:			SYM.	DATE:	DESCRIPTION OF REVISIONS:	DRAWN	APPD.
DRAWN:	HV	11/17/97	▲	05.25.94	Added note tying dwg to spec; removed auth. column	JF	JF
CHECKED:	GAT	10/12/05	▲	05.05.95	Corr several dims to match parts; corr tol.	JF	JF
APPROVED:	JF	10/12/05	▲	11.17.97	Redrawn to new print layout; -X added = Schematic	TF	JF
			▲	10.07.05	New Indicator, T1 showed for No6 Schematic choice . X Note	GAT	JF

3RD ANGLE		UNIT:	IN[mm]	SCALE:	2:1	REV.	E
-----------	--	-------	--------	--------	-----	------	---



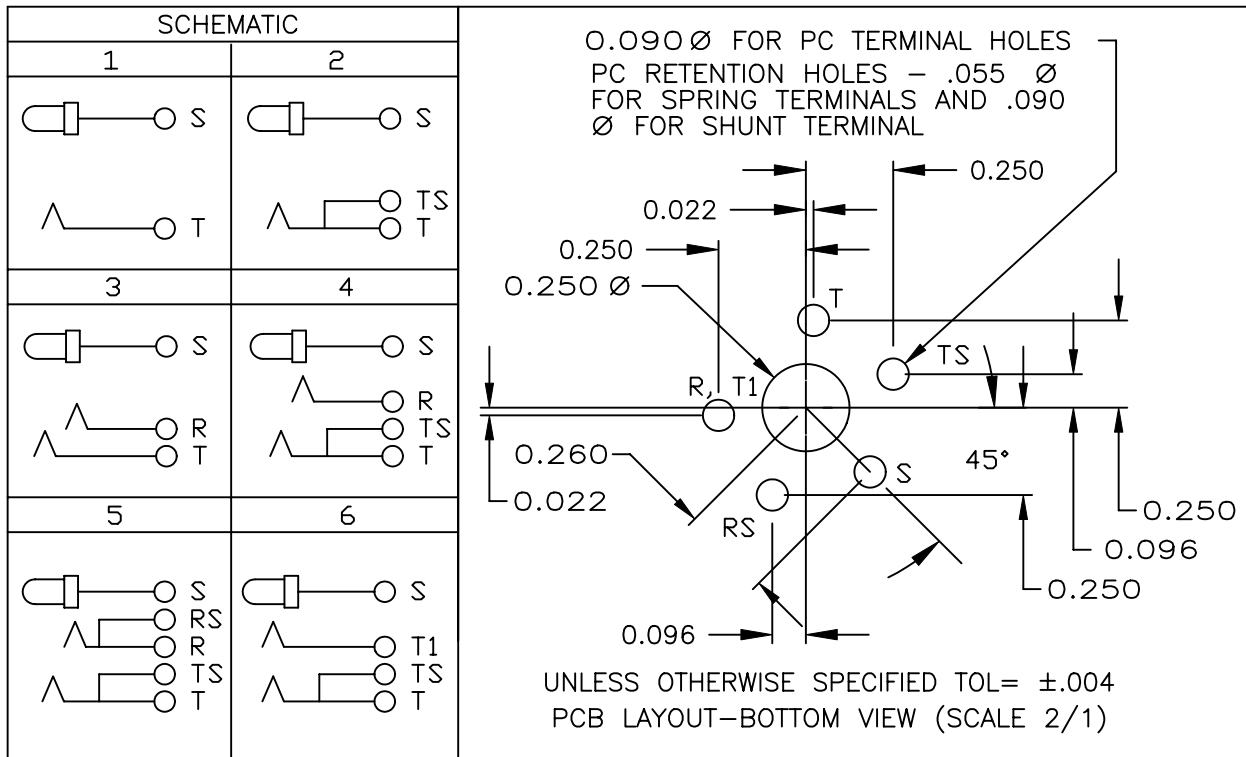
TOLERANCE:	PART NO:
TO 1 DECIMAL PLACE: ±.015 [.40]	SI-508-X
TO 2 DECIMAL PLACES: ±.010 [.30]	TITLE:
TO 3 DECIMAL PLACES: ±.006 [.15]	ENCLOSED PHONE JACK
SHEET:	1 OF 2

1

2

3

4

COMPONENT
SPECIFICATIONUSE OR REPRODUCTION OF THIS DRAWING FOR THE PURPOSE OF MANUFACTURING THIS
ARTICLE OR ANY ARTICLES SHOWN FOR ANY PURPOSE IS STRICTLY PROHIBITED WITHOUT
WRITTEN PERMISSION FROM SENIOR INDUSTRIES, INC.SPECIFICATIONS:ELECTRICAL:

CONTACT RATING: 0.25A AT 48 VDC
 CONTACT RESISTANCE: 20 MILLIOHMS MAX. INITIAL, 50
 MILLIOHMS MAX. AFTER LIFE
 INSULATION RESISTANCE: 50,000 MEGOHMS MIN. AT 500 VDC
 DIELECTRIC STRENGTH: 500 VAC FOR ONE MINUTE

MECHANICAL:

INSERTION FORCE: 0.5 TO 3.0 Kg
 WITHDRAWAL FORCE: 0.5 TO 3.0 Kg
 OPERATING LIFE: 10,000 CYCLES

ENVIRONMENTAL:

OPERATING TEMPERATURE: -40°C TO 80°C

NOTE: 'X' IN PART NUMBER DENOTES SCHEMATIC: SEE TABLE ABOVE

DESIGNED:			SYM.	DATE:	DESCRIPTION OF REVISIONS:	DRAWN	APPD.
DRAWN:	HV	11/17/97	▲	05.25.94	Added note tying dwg to spec; removed auth. column	JF	JF
CHECKED:	GAT	10/12/05	▲	05.05.95	Corr several dims to match parts; corr tol.	JF	JF
APPROVED:	JF	10/12/05	▲	11.17.97	Redrawn to new print layout; -X added = Schematic	TF	JF
			▲	10.07.05	New Indicator, T1 showed for No6 Schematic choice . X Note	GAT	JF

3RD ANGLE		UNIT:	IN[mm]	SCALE:	REV.	E
-----------	--	-------	--------	--------	------	---

**SENIOR
INDUSTRIES, INC.**

TOLERANCE:

TO 1 DECIMAL PLACES: ±

TO 2 DECIMAL PLACES: ±

TO 3 DECIMAL PLACES: ±

SHEET:

PART NO:

SI-508-X

TITLE:

ENCLOSED PHONE JACK

2 OF 2