

1

2

3

4

5

COMPONENT SPECIFICATION

USE OR REPRODUCTION OF THIS DRAWING FOR THE PURPOSE OF MANUFACTURING THIS ARTICLE OR ANY ARTICLES SHOWN FOR ANY PURPOSE IS STRICTLY PROHIBITED WITHOUT WRITTEN PERMISSION FROM SENIOR INDUSTRIES, INC.

SPECIFICATIONS:

ELECTRICAL:

CONTACT RATING: 5A @ 16 VDC
CONTACT RESISTANCE: 30 MILLIOHMS MAX.
INSULATION RESISTANCE: 50 MEGOHMS MIN. @ 500VDC
DIELECTRIC STRENGTH: 500 VAC FOR 1 MINUTE

MECHANICAL

LIFE CYCLE: 5,000 CYCLES
INSERTION FORCE: 0.3 Kg TO 3.0 Kg
WITHDRAWAL FORCE: 0.3 Kg TO 3.0 Kg

ENVIRONMENTAL:

OPERATING TEMPERATURE: -25°C TO +70°C
PART SHALL WITHSTAND WAVE SOLDER TEMPERATURE OF 260°C FOR 5 SECONDS.

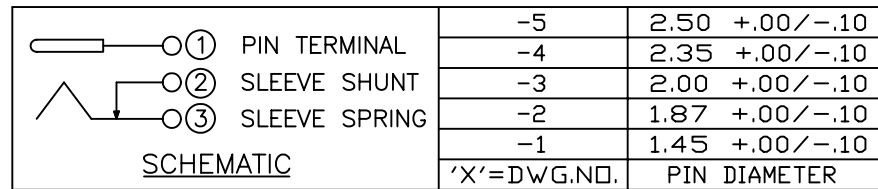
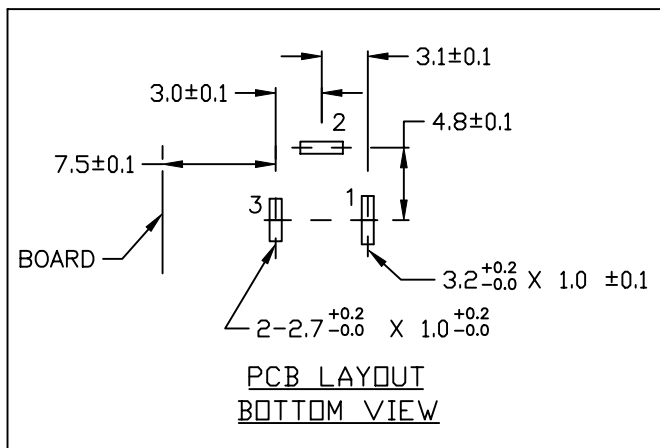
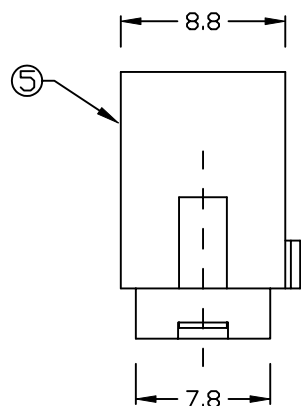
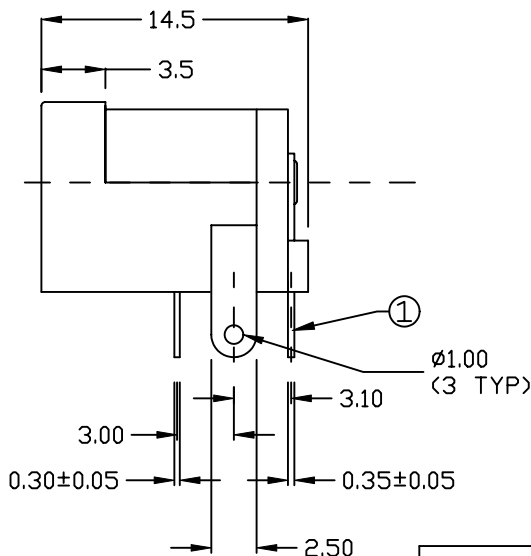
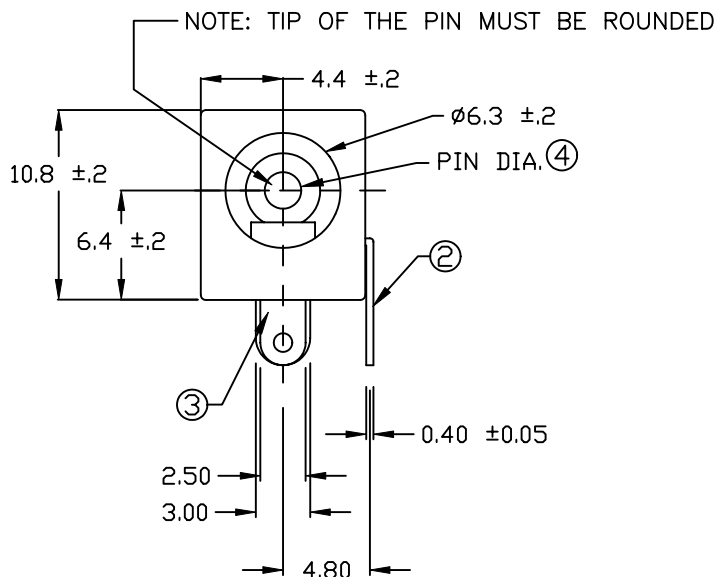


Table with 4 columns: ITEM, DESCRIPTION, QTY, MATERIAL/FINISH. Rows include HOUSING (PBT, UL94V-0, BLACK), PIN (BRASS, TIN PLATED), SLEEVE SPRING (MANGANESE STEEL, SILVER PLATED), SLEEVE SHUNT (BRASS, SILVER PLATED), and PIN TERMINAL (BRASS, SILVER PLATED).

RoHS COMPLIANT



Table with columns: DESIGNED, DRAWN, CHECKED, APPROVED, SYM, DATE, DESCRIPTION OF REVISIONS, DRAWN, APPD. Revisions include: 09.04.03 Reversed Rev C & reverted back to B, 04.12.05 New Index, Ched tol for 0.35±0.35 to ±0.05, 01.30.06 'RoHS COMPL' note & 260°C process temp added, 10.28.08 Repl'd #3 mater: Phos.bronze->manganese steel, 11.17.08 Corr plating on Pin from Ni to Tin plating.

Table with columns: TOLERANCE, PART NO, TITLE, SHEET. Values: TOLERANCE: TO 1 DECIMAL PLACE: ±.3, TO 2 DECIMAL PLACES: ±.15; PART NO: SI-515-X; TITLE: DC POWER JACK; SHEET: 1 OF 1

Table with columns: 3RD ANGLE, UNIT, mm, SCALE, 3:1, REV, H