

1

2

3

4

COMPONENT SPECIFICATION

USE OR REPRODUCTION OF THIS DRAWING FOR THE PURPOSE OF MANUFACTURING THIS ARTICLE OR ANY ARTICLES SHOWN FOR ANY PURPOSE IS STRICTLY PROHIBITED WITHOUT WRITTEN PERMISSION FROM SENIOR INDUSTRIES, INC.

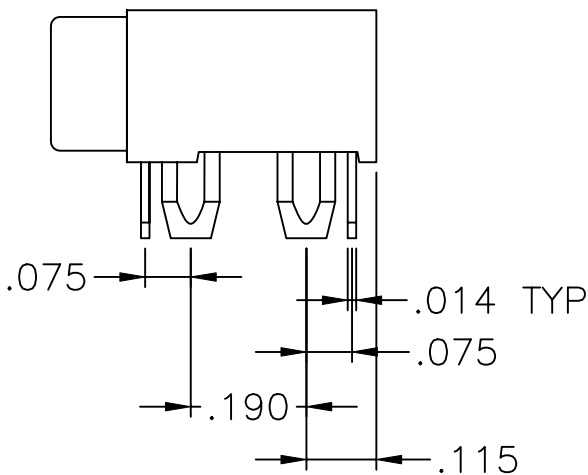
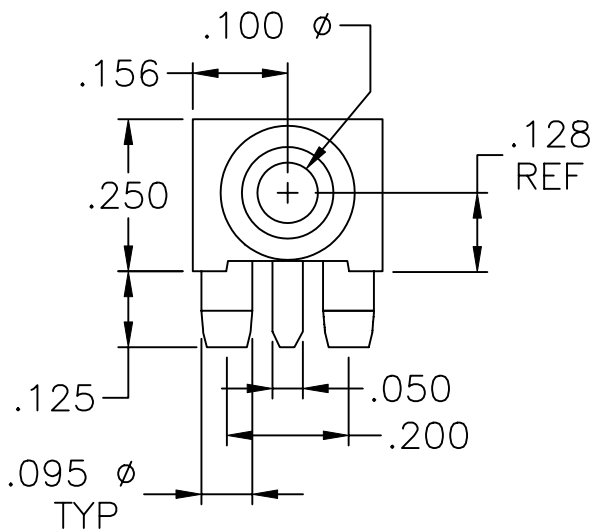
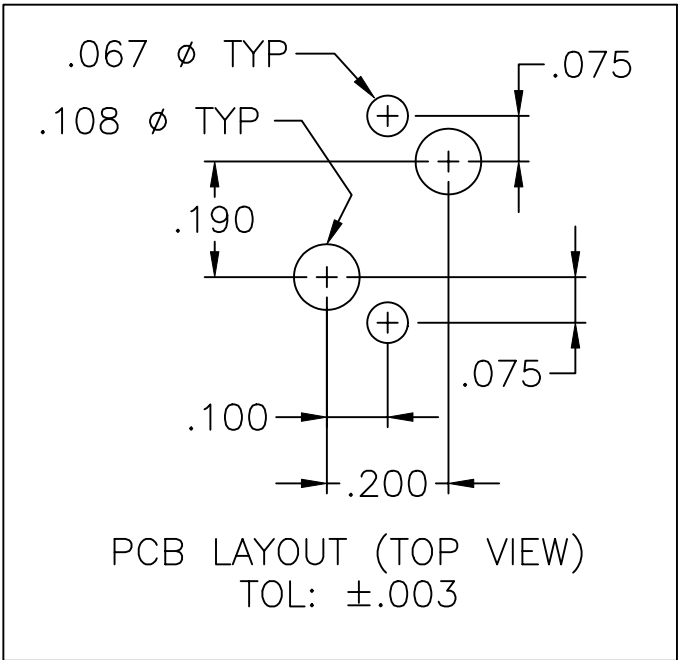
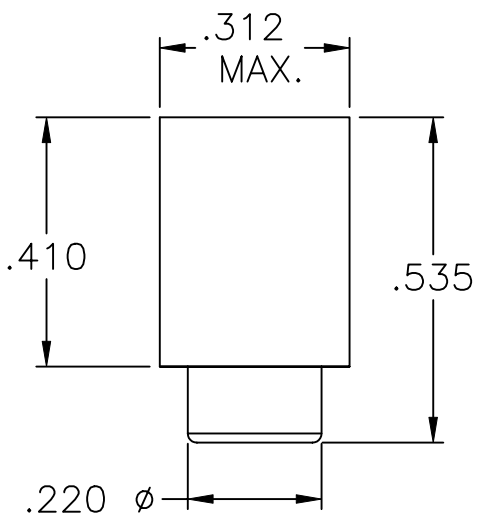
A

B

C

D

E



DESIGNED:			SYM.	DATE:	DESCRIPTION OF REVISIONS:	DRAWN	APPD.
DRAWN:	HV	09/05/96	▲	09.05.96	NEW	JF	JF
CHECKED:	GAT	06/05/06	▲	06.05.06	'X' added in PN = Housing Color	GAT	JF
APPROVED:	JF	06/12/06	▲	.	.		
			▲	.	.		

3RD ANGLE		UNIT:	IN	SCALE:	3:1	REV.	B
-----------	--	-------	----	--------	-----	------	---



TOLERANCE:		PART NO:	
TO 2 DECIMAL PLACE:	±.01	SI-526P-1-X	
TO 3 DECIMAL PLACES:	±.005	TITLE:	
AS ANGLES:	±1/2°	TIP JACK	
SHEET:		1 OF 2	

1

2

3

4

COMPONENT
SPECIFICATIONUSE OR REPRODUCTION OF THIS DRAWING FOR THE PURPOSE OF MANUFACTURING THIS
ARTICLE OR ANY ARTICLES SHOWN FOR ANY PURPOSE IS STRICTLY PROHIBITED WITHOUT
WRITTEN PERMISSION FROM SENIOR INDUSTRIES, INC.SPECIFICATIONS:

INSULATION RESISTANCE: 8000 MEGOHMS MIN.
 RETENTION FORCE: 0.2 Kg WITH .080 ±.001 Ø PIN
 BODY: PBT, UL94V-0, 30% GLASS
 CONTACTS/LEADS: BERYLLIUM COPPER, 100 MICROINCHES TIN PLATED

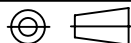
NOTES:

- LEADS MUST PASS THE SOLDERABILITY TEST PROCEDURE P1101 WITH A MINIMUM OF 95% WETTING AT A SOLDER TEMPERATURE OF 260°C ± 5°C AND A DWELL TIME OF 5 SECONDS ± 1 SECOND.
- "X" IN PART NUMBER DENOTES COLOR OF HOUSING:

- 1 = BLUE
- 2 = RED
- 3 = BLACK (STD)
- 4 = BROWN
- 5 = GREEN
- 6 = WHITE
- 7 = GRAY
- 8 = ORANGE
- 9 = YELLOW
- 10 = VIOLET
- 11 = IVORY/NEUTRAL

DESIGNED:			SYM.	DATE:	DESCRIPTION OF REVISIONS:	DRAWN	APPD.
			△	09.05.96	NEW	JF	JF
DRAWN:	HV	09/05/96	△	06.05.06	'X' added in PN = Housing Color	GAT	JF
CHECKED:	GAT	06/05/06	△	.	.		
APPROVED:	JF	06/12/06	△	.	.		
			△	.	.		

3RD ANGLE



UNIT:

IN

SCALE:

REV.

B


**SENIOR
INDUSTRIES, INC.**

TOLERANCE:

TO 2 DECIMAL PLACE: ±

TO 3 DECIMAL PLACES: ±

AS ANGLES: ± °

SHEET:

PART NO:

SI-526P-1-X

TITLE:

TIP JACK

2 OF 2