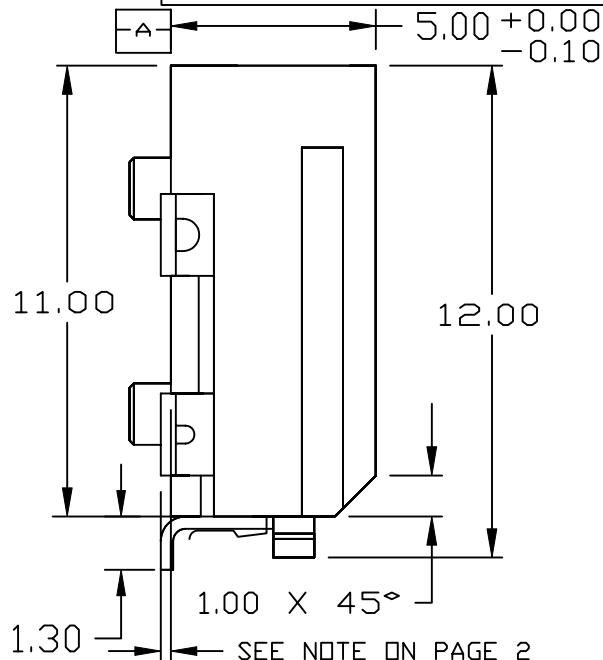
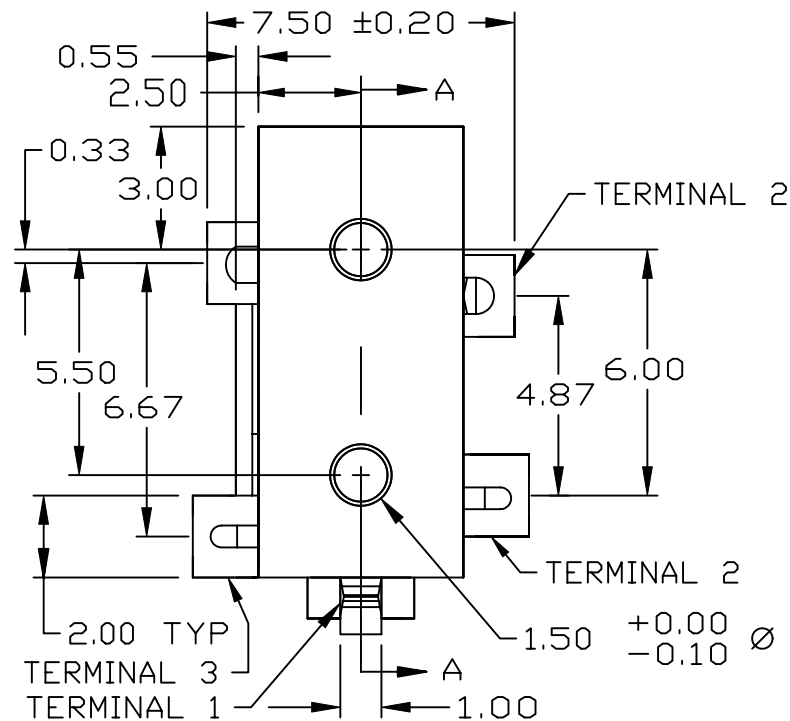
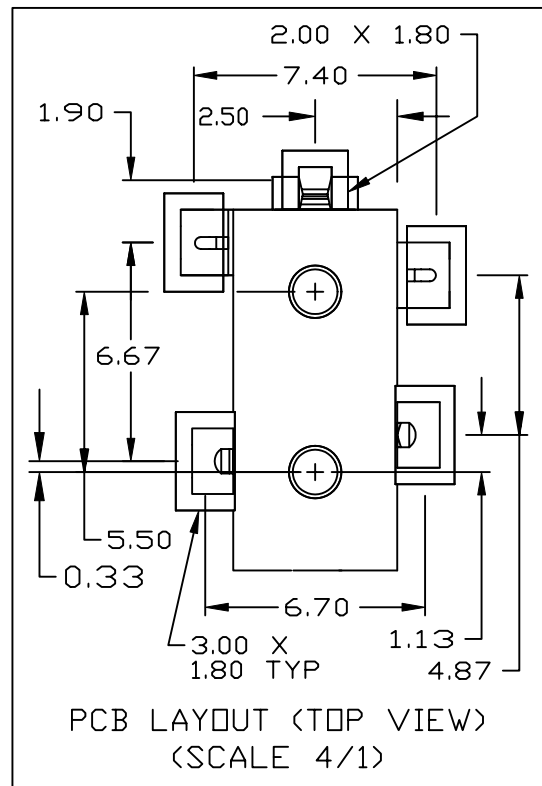
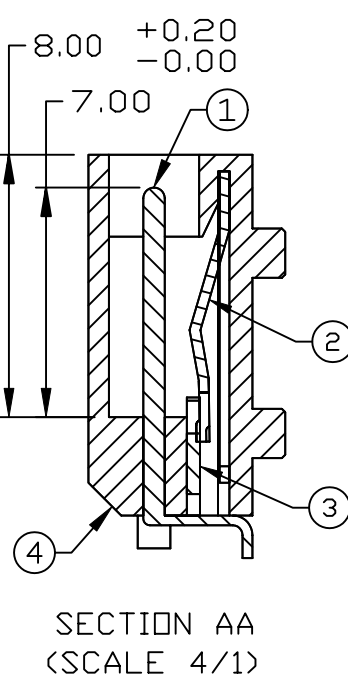
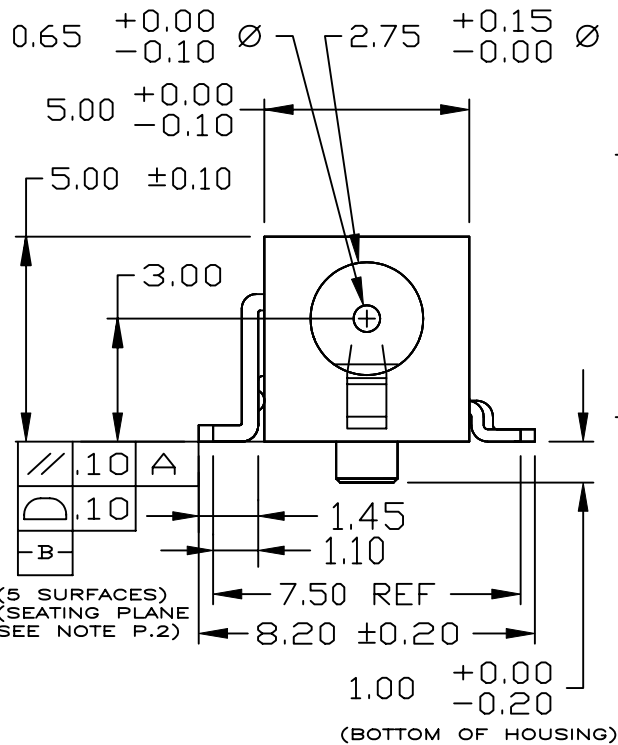


UNLESS OTHERWISE SPECIFIED, ALL DIMENSIONS ARE IN METRIC.

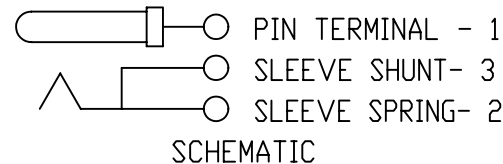
TO 1 DECIMAL PLACE ±.3
 TO 2 DECIMAL PLACES ±.12
 AS ANGLES ±1/2°

ISSUE	DATE
B	08/17/99
C	01/15/04



NOTE: SEATING PLANE TO BE ESTABLISHED BY 2 BUSHING END TERMINALS AND PIN TERMINAL. REAR TERMINALS TO BE LOCATED BETWEEN SEATING PLANE AND BOTTOM OF HOUSING.

ITEM	DESCRIPTION	MATERIAL/FINISH
4	HOUSING	PPS, UL94V-0, BLACK
3	SLEEVE SHUNT	.4 THK BRASS - SILVER PLATED
2	SLEEVE SPRING	.3 THK PHOSPHOR BRONZE - SILVER PLATED
1	PIN	BERYLLIUM COPPER - SILVER PLATED



TITLE: SMT POWER JACK		PART NO: SI-527G	
DATE: 03/30/99	DRAWN: HV	CHKD:	SCALE: 5/1
		SHEET: 1 OF 4	

UNLESS OTHERWISE SPECIFIED, ALL DIMENSIONS ARE IN METRIC.

TO 1 DECIMAL PLACE ±
TO 2 DECIMAL PLACES ±
AS ANGLES ±1/2°

ISSUE	DATE
A	04/02/99
B	08/17/99
C	01/15/04

SPECIFICATIONS

ELECTRICAL

RATED VOLTAGE: 12 VRMS
 RATED CURRENT: 2 AMPS
 CONTACT RESISTANCE: 30 MILLIOHMS MAX.
 INSULATION RESISTANCE: 100 MEGOHMS MINIMUM AT 500 VDC
 DIELECTRIC STRENGTH : 500 VAC MIN. FOR 1 MINUTE

MECHANICAL

INSERTION FORCE: 3 kg MAX.
 WITHDRAWAL FORCE: .3 kg MIN.
 MATING CYCLES: 5000 CYCLES WITHOUT DEGRADING ELECTRICAL CHARACTERISTICS
 SOLDERABILITY: 95% WETTING MIN. AFTER 5 SECONDS DIP IN 230°C SOLDER
 PIN RETENTION FORCE: 4.5 Kg MIN.

ENVIRONMENTAL

STORAGE TEMPERATURE RANGE: -40°C TO +100°C
 OPERATING TEMPERATURE RANGE: -40°C TO +85°C
 HUMIDITY RANGE: 10% RH TO 80% RH

QUALIFICATION REQUIREMENTS

TEMPERATURE SHOCK: -40°C TO +85°C, 32 CYCLES, 30 MINUTES DWELL, 20 SEC. MAX. TRANSITION
 STATIC HUMIDITY: 70°C, 90 TO 95% RH FOR 240 HOURS
 VIBRATION:
 RANDOM: 6 G'S, 10-2000 Hz, 0.04G²/Hz, 15 MINUTES PER PLANE, MAX. OF 1 MICROSECOND DISCONTINUITY
 SINUSOIDAL: 15 G'S, 10-60 Hz, 30 MINUTES PER PLANE, MAX. OF 1 MICROSECOND DISCONTINUITY
 MECHANICAL SHOCK: 3000 G'S, 1/2 SINE PULSE, .3 MILLI-SECONDS, 3 SHOCKS PER PLANE (18 SHOCKS TOTAL), MAX. OF 1 MICROSECOND DISCONTINUITY

NOTES:

SEATING PLANE TO BE ESTABLISHED BY THE PIN TERMINAL AND (1) SLEEVE SHUNT TERMINAL AND (1) SLEEVE SPRING TERMINAL. THE REMAINING SLEEVE SHUNT AND SPRING TERMINALS TO BE LOCATED BETWEEN THE BOTTOM OF THE HOUSING AND THE SEATING PLANE AND MEET DRAWING REQUIREMENTS FOR CO-PLANARITY AND PARALLELISM TO THE SEATING PLANE.



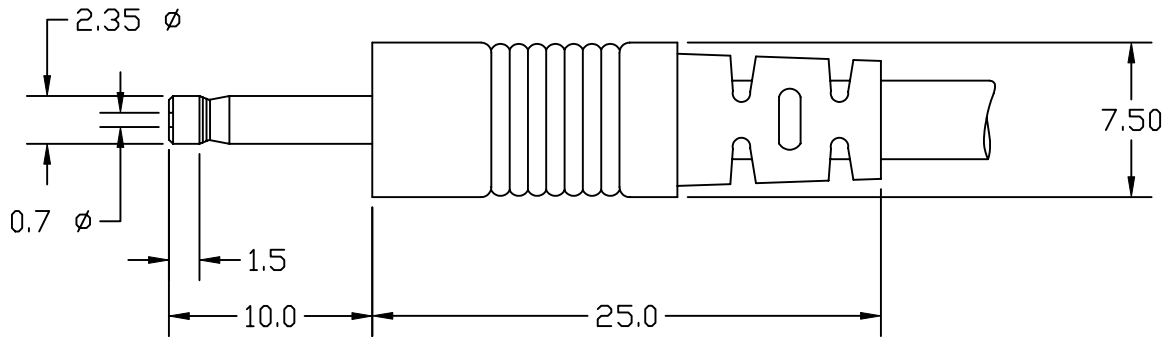
TITLE: SMT POWER JACK		PART NO: SI-527G			
DATE: 03/30/99	DRAWN: HV	CHKD:	SCALE:	SHEET: 2 OF 4	

UNLESS OTHERWISE SPECIFIED, ALL DIMENSIONS ARE IN METRIC.

TO 1 DECIMAL PLACE ±
TO 2 DECIMAL PLACES ±
AS ANGLES ±1/2°

ISSUE	DATE
A	04/02/99
B	08/17/99
C	01/15/04

RECOMMENDED MATING PLUG DIMENSIONS



UNLESS OTHERWISE SPECIFIED, ALL DIMENSIONS ARE IN METRIC.

TO 1 DECIMAL PLACE ±
 TO 2 DECIMAL PLACES ±
 AS ANGLES ±1/2°

ISSUE	DATE
A	04/02/99
B	08/17/99
C	01/15/04

TAPE CARRIER SPECIFICATION

	NOM.	MIN.	MAX.
W	24.00	23.90	24.30
P	12.00	11.90	12.10
E	1.75	1.65	1.85
F	11.50	11.40	11.60
D	1.50	1.50	1.60
D1	1.50	1.50	1.75
Po	4.00	3.90	4.10
P2	2.00	1.90	2.10
Ao	8.58	8.48	8.68
Bo	12.82	12.72	12.92
Ko	6.37	6.27	6.47
T1	.368	.355	.381

