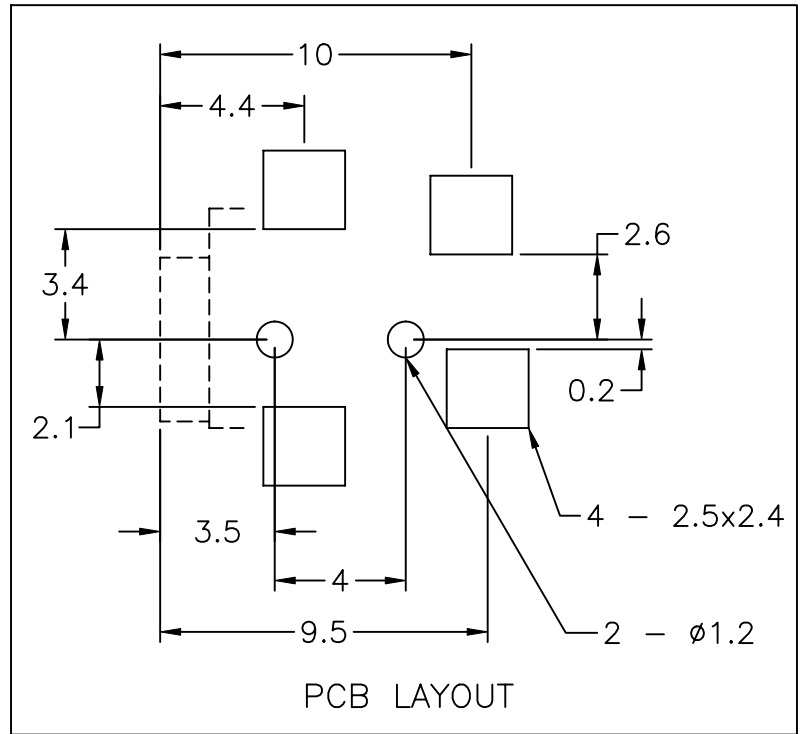
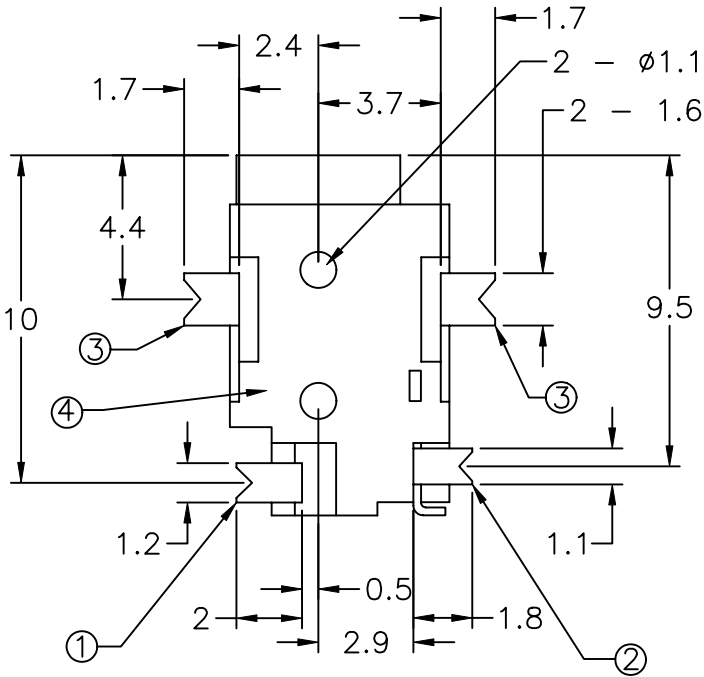
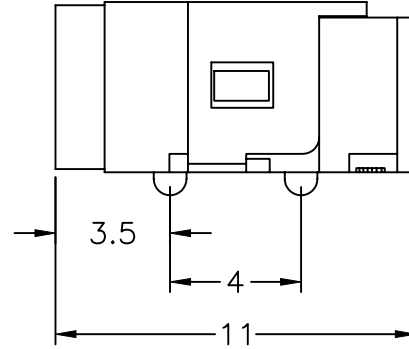
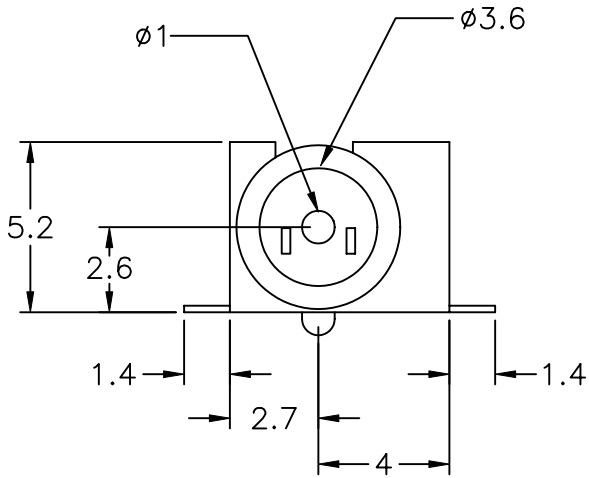
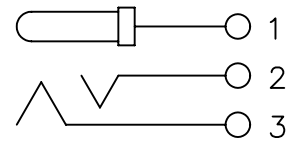


USE OR REPRODUCTION OF THIS DRAWING FOR THE PURPOSE OF MANUFACTURING THIS ARTICLE OR ANY ARTICLES SHOWN FOR ANY PURPOSE IS STRICTLY PROHIBITED WITHOUT WRITTEN PERMISSION FROM SENIOR INDUSTRIES, INC.

CUSTOMER SPECIFICATION DRAWING



4	HOUSING	1	PPS UL94V0
3	SLEEVE TERMINAL	1	PHOSPHOR BRONZE, TIN PLATED
2	SLEEVE TERMINAL	1	PHOSPHOR BRONZE, TIN PLATED
1	PIN TERMINAL	1	PHOSPHOR BRONZE, TIN PLATED
ITEM	DESCRIPTION	QTY	MATERIAL/FINISH



SCHEMATIC



TITLE: POWER JACK		PART NO: SI-547	
DATE: 01/25/01	DRAWN: RB	REV: A	SCALE: N/A
		SHEET: 1 OF 2	

USE OR REPRODUCTION OF THIS DRAWING FOR THE PURPOSE OF MANUFACTURING THIS ARTICLE OR ANY ARTICLES SHOWN FOR ANY PURPOSE IS STRICTLY PROHIBITED WITHOUT WRITTEN PERMISSION FROM SENIOR INDUSTRIES, INC.

CUSTOMER
SPECIFICATION
DRAWING

SPECIFICATIONS

ELECTRICAL

CONTACT RATING:	1A AT 20VDC
CONTACT RESISTANCE:	30 MILLIOHMS MAX. AT 1A 20VDC
INSULATION RESISTANCE:	100 MEGOHMS MIN. AT 500VDC
DIELECTRIC STRENGTH:	500VAC FOR 1 MINUTE

MECHANICAL

OPERATING LIFE:	12,000 CYCLES
-----------------	---------------



TITLE: POWER JACK			PART NO: SI-547	
DATE: 01/25/01	DRAWN: RB	REV: A	SCALE: N/A	SHEET: 2 OF 2