

1

2

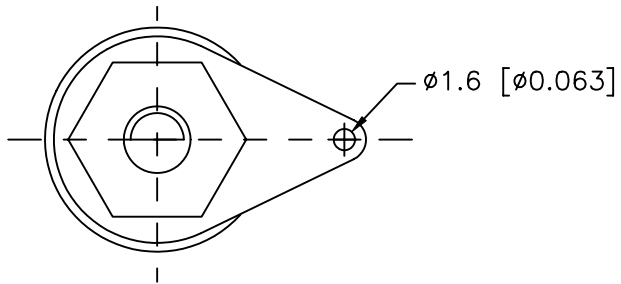
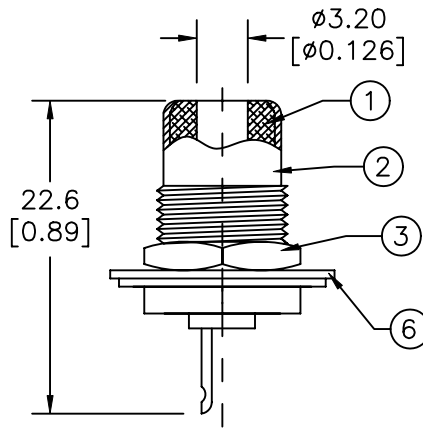
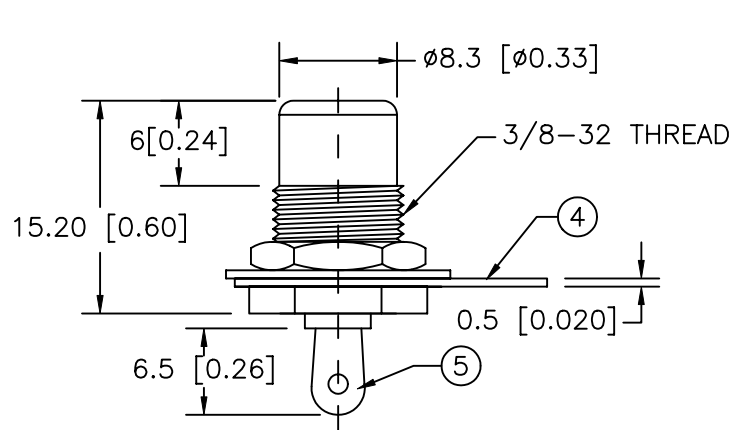
3

4

5

COMPONENT SPECIFICATION

USE OR REPRODUCTION OF THIS DRAWING FOR THE PURPOSE OF MANUFACTURING THIS ARTICLE OR ANY ARTICLES SHOWN FOR ANY PURPOSE IS STRICTLY PROHIBITED WITHOUT WRITTEN PERMISSION FROM SENIOR INDUSTRIES, INC.



ITEM	PART	QT'Y	MATERIAL/FINISH
1	INSERT INSULATOR	1	ABS; BLACK OR RED
2	HOUSING	1	BRASS; NICKEL PLATED
3	NUT	1	BRASS; NICKEL PLATED
4	TERMINAL	1	BRASS; NICKEL PLATED
5	PIN	1	BRASS; NICKEL PLATED
6	WASHER	1	BRASS; NICKEL PLATED



DESIGNED:			SYM.	DATE:	DESCRIPTION OF REVISIONS:	DRAWN:	APPD:	TOLERANCE:	PART NO:	SI-565
DRAWN:	GAT	07/18/06	▲	07.18.06	NEW	GAT	JF			
CHECKED:	GAT	07/18/06	▲	06.06.11	Chg'd thread to 3/8-32 from M10	MAW	JF	TO 2 DECIMAL PLACES: ±.10	SHEET:	1 OF 1
APPROVED:	JF	07/18/06	▲							
3RD ANGLE		UNIT:	mm	SCALE:	2:1	REV.	B			