

1

2

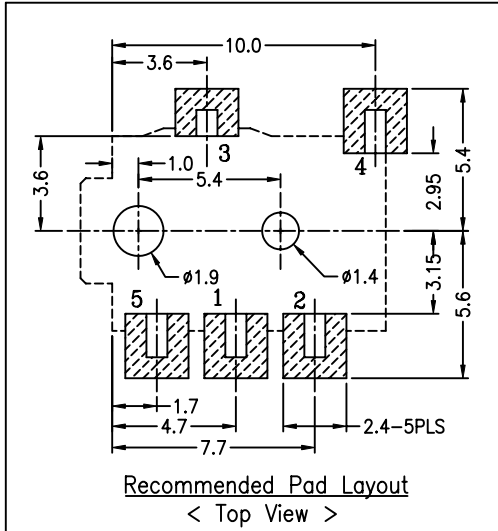
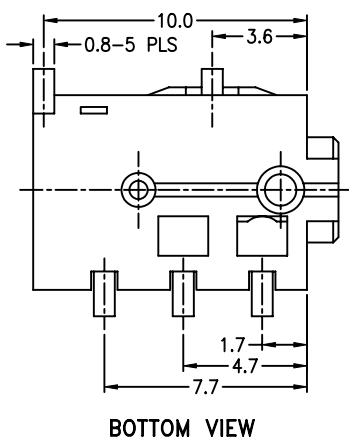
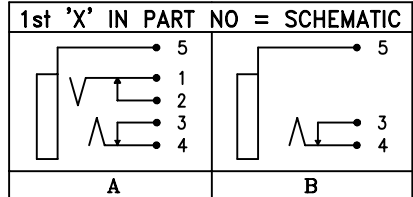
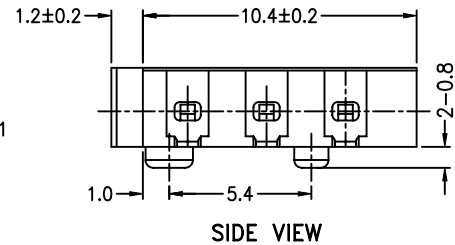
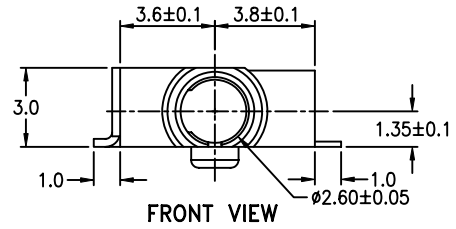
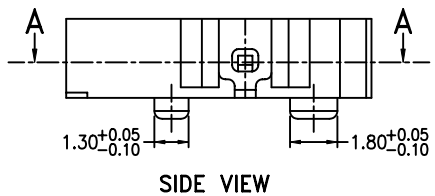
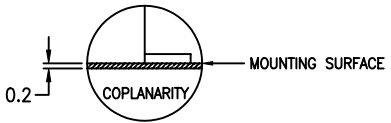
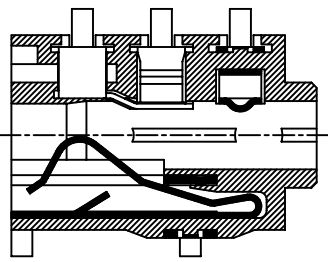
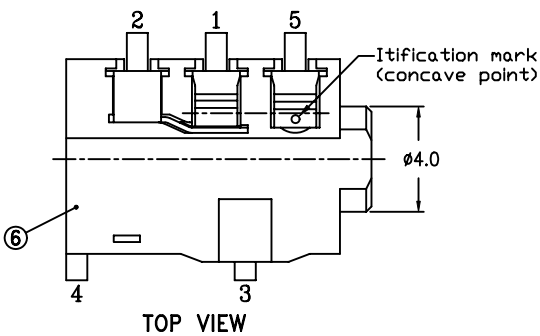
3

4

5

COMPONENT SPECIFICATION

USE OR REPRODUCTION OF THIS DRAWING FOR THE PURPOSE OF MANUFACTURING THIS ARTICLE OR ANY ARTICLES SHOWN FOR ANY PURPOSE IS STRICTLY PROHIBITED WITHOUT WRITTEN PERMISSION FROM SENIOR INDUSTRIES, INC.



PART NO. :	2nd 'X' IN PART NO. = PACKAGING:
SI-582-X	Tape Reel (1000 PCS/REEL)
SI-582-X-1	Bulk

ITEM	NAME	Q'TY	MATERIAL FINISH
⑥	HOUSING	1	POLYAMIDE, UL94V-0, BLACK
⑤	SLEEVE SPRING	1	.20mm Be-Cu ALLOY - GOLD PLATED
④	TIP SPRING	1	.20mm PHOSPHOR BRONZE - GOLD PLATED
③	TIP SHUNT	1	.30mm BRASS - GOLD PLATED
②	RING SHUNT	1	.20mm PHOSPHOR BRONZE - GOLD PLATED
①	RING SPRING	1	.20mm Be-Cu ALLOY - GOLD PLATED



DESIGNED:	DATE:	DESCRIPTION OF REVISIONS:	DRAWN:	APPD:
GAT	12/21/04	NEW	RB	JF
GAT	04/27/05	Gen. dwg/material updated. 'X' added to the PN.	GAT	JF
GAT	09/22/05	Corr '-1' option from 'Tray' pack. to 'Bulk' pack.	GAT	JF
JF	09/22/05			

TOLERANCE:	PART NO:	SI-582-X-X
TO 1 DECIMAL PLACE: ±.3	TITLE:	ø2.5mm SMT AUDIO JACK-Mono
TO 2 DECIMAL PLACES: ±.12	SHEET:	1 OF 2

3RD ANGLE	UNIT: mm	SCALE: 1:1	REV: C
-----------	----------	------------	--------

AS ANGLES: ±1/2'	SHEET: 1 OF 2
------------------	---------------

1

2

3

4

5

COMPONENT
SPECIFICATIONUSE OR REPRODUCTION OF THIS DRAWING FOR THE PURPOSE OF MANUFACTURING THIS
ARTICLE OR ANY ARTICLES SHOWN FOR ANY PURPOSE IS STRICTLY PROHIBITED WITHOUT
WRITTEN PERMISSION FROM SENIOR INDUSTRIES, INC.SPECIFICATIONSELECTRICAL

CONTACT RATING: 0.3 A @ 16 VDC
 CONTACT RESISTANCE:
 PLUG TO CONTACTS: 50 MILLIOHMS MAX.
 CONTACT TO SHUNT: 30 MILLIOHMS MAX.
 INSULATION RESISTANCE: 100 MEGOHMS MIN. @ 500 VDC
 DIELECTRIC STRENGTH: 500 VAC FOR 1 MINUTE

MECHANICAL

LIFE: 5,000 CYCLES
 INSERTION FORCE: 0.4 Kg TO 3.0 Kg
 WITHDRAWAL FORCE: 0.4 Kg TO 3.0 Kg

ENVIRONMENTAL

OPERATING TEMPERATURE: -25°C TO +85°C

MECHANICAL

TAPE WIDTH: 24mm
 TAPE PITCH: 15mm
 REEL SIZE: 380mm


**SENIOR
INDUSTRIES, INC.**

DESIGNED:			SYM.	DATE:	DESCRIPTION OF REVISIONS:	DRAWN:	APPD:	TOLERANCE:	PART NO:	SI-582-X-X
DRAWN:	GAT	12/21/04	△	02.02.01	NEW	RB	JF			
CHECKED:	GAT	09/22/05	△	04.27.05	Gen. dwg/material updated. 'X' added to the PN.	GAT	JF			
APPROVED:	JF	09/22/05	△	09.22.05	Corr '-1' option from 'Tray' pack. to 'Bulk' pack.	GAT	JF	AS ANGLES: ±	SHEET:	2 OF 2
3RD ANGLE		UNIT:	mm	SCALE:		REV:	C			