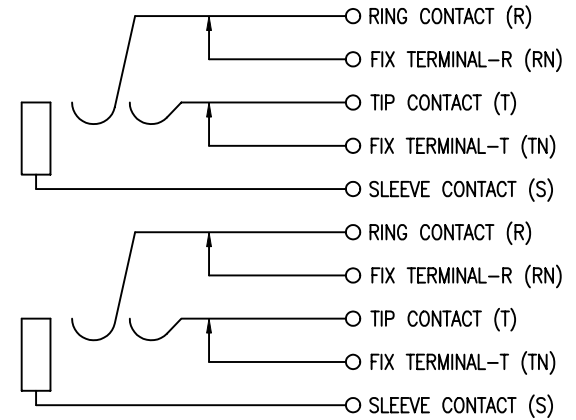
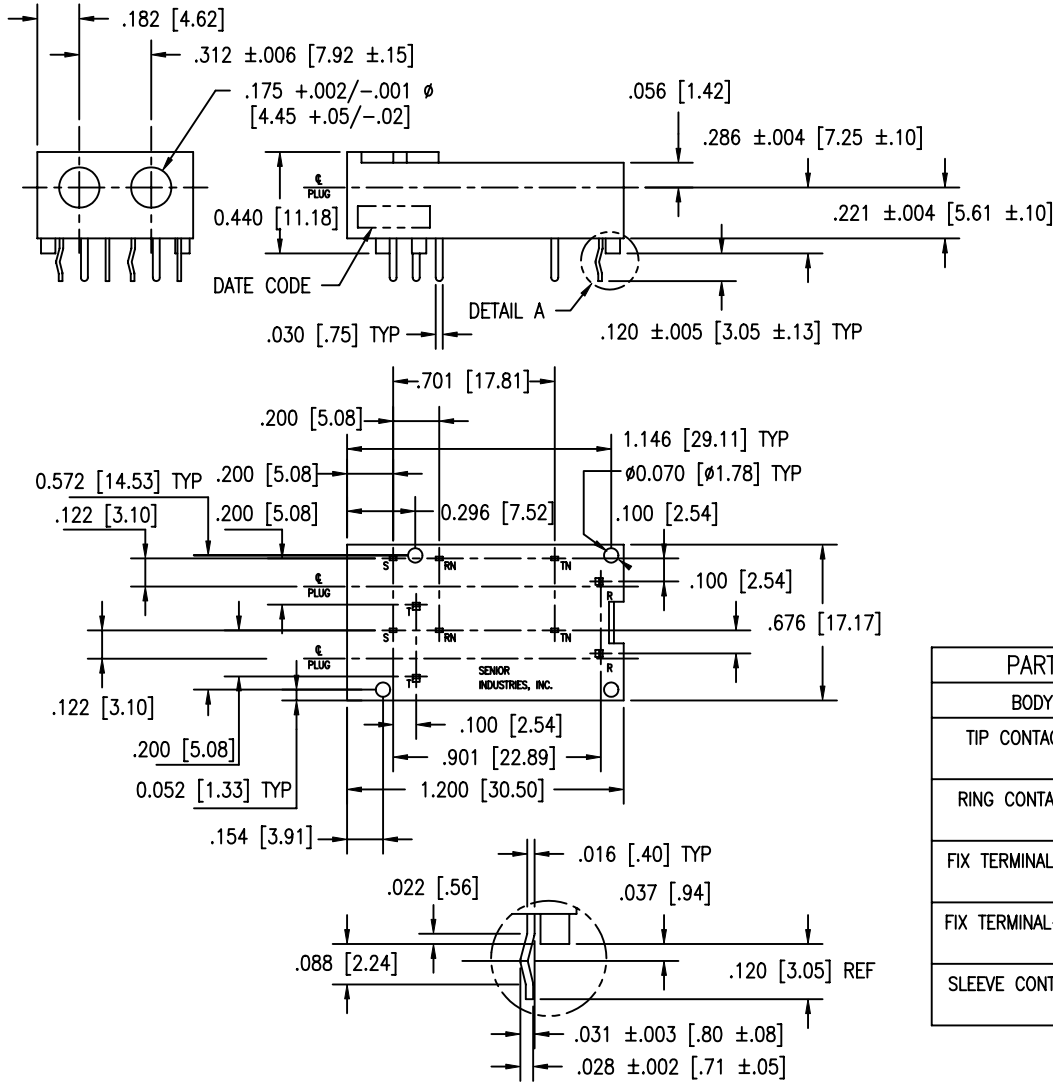


COMPONENT SPECIFICATION

USE OR REPRODUCTION OF THIS DRAWING FOR THE PURPOSE OF MANUFACTURING THIS ARTICLE OR ANY ARTICLES SHOWN FOR ANY PURPOSE IS STRICTLY PROHIBITED WITHOUT WRITTEN PERMISSION FROM SENIOR INDUSTRIES, INC.



SCHEMATIC

PART	QTY	MATERIAL/FINISH
BODY	1	PBT, 10% GLASS, UL94V-0
TIP CONTACT (T)	2	PHOSPHOR BRONZE, 100 MICROINCHES TIN. CROSS BAR: COPPER, 30 MICROINCHES MIN GOLD OVER 50 MICROINCHES MIN NICKEL.
RING CONTACT (R)	2	PHOSPHOR BRONZE, 100 MICROINCHES TIN. CROSS BAR: COPPER, 30 MICROINCHES MIN GOLD OVER 50 MICROINCHES MIN NICKEL.
FIX TERMINAL-T (TN)	2	PHOSPHOR BRONZE, 100 MICROINCHES TIN. CROSS BAR: COPPER, 30 MICROINCHES MIN GOLD OVER 50 MICROINCHES MIN NICKEL.
FIX TERMINAL-R (RN)	2	PHOSPHOR BRONZE, 100 MICROINCHES TIN. CROSS BAR: COPPER, 30 MICROINCHES MIN GOLD OVER 50 MICROINCHES MIN NICKEL.
SLEEVE CONTACT (S)	2	PHOSPHOR BRONZE, 100 MICROINCHES TIN. CROSS BAR: COPPER, 30 MICROINCHES MIN GOLD OVER 50 MICROINCHES MIN NICKEL.

RoHS COMPLIANT



SENIOR INDUSTRIES, INC.

DESIGNED:	DRAWN:	CHECKED:	APPROVED:	SYM.	DATE:	DESCRIPTION OF REVISIONS:	DRAWN:	APPD:
	GAM	GAT	JF	△	04.08.93	NEW	JF	JF
				△	02.21.96	PNcorr. Mat/finish updated. Show jack w/o cover	JF	JF
				△	10.19.04	Added stand-offs Dims	GAT	TF
				△	09.20.05	New Ind.Part'RoHS compliant'Specs. Note:X=colors	GAT	JF

TOLERANCE:	PART NO:	TITLE:
TO 2 DECIMAL PLACE: ±	SI-BJ-0224-X	DUAL BANTAM JACK
TO 3 DECIMAL PLACES: ±.012 [.30]		

3RD ANGLE	UNIT:	IN[mm]	SCALE:	2:1	REV:	D	AS ANGLES:	±	SHEET:	1 OF 2
-----------	-------	--------	--------	-----	------	---	------------	---	--------	--------

1

2

3

4

5

COMPONENT SPECIFICATION

USE OR REPRODUCTION OF THIS DRAWING FOR THE PURPOSE OF MANUFACTURING THIS ARTICLE OR ANY ARTICLES SHOWN FOR ANY PURPOSE IS STRICTLY PROHIBITED WITHOUT WRITTEN PERMISSION FROM SENIOR INDUSTRIES, INC.

SPECIFICATIONS

ELECTRICAL

CONTACT RATING: 250mA @ 130 VAC
CONTACT RESISTANCE: 20 MILLIOHMS MAX.
INSULATION RESISTANCE: 10,000 MEGOHMS MIN. @ 500 VDC
DIELECTRIC STRENGTH: 500 VAC FOR 1 MINUTE

MECHANICAL

LIFE: 10,000 CYCLES
INSERTION FORCE: 7.0 Lbs MAX.
WITHDRAWAL FORCE: 1.5 Lbs MIN.

ENVIRONMENTAL

OPERATING TEMPERATURE: -40°C TO +85°C

REGULATORY:

UL RECOGNIZED COMPONENT. UL FILE NO. E147880.

NOTE: 'X' IN PART NUMBER DENOTES HOUSING COLOR:

- 1 - BLUE
- 2 - RED
- 3 - BLACK (STD)
- 4 - BROWN
- 5 - GREEN
- 6 - WHITE
- 7 - GRAY
- 8 - ORANGE
- 9 - YELLOW
- 10 - VIOLET
- 11 - IVORY/NEUTRAL



SENIOR INDUSTRIES, INC.

DESIGNED:			SYM.	DATE:	DESCRIPTION OF REVISIONS:	DRAWN:	APPD:	TOLERANCE:	PART NO:	SI-BJ-0224-X
DRAWN:	GAM	07/23/92		04.08.93	NEW	JF	JF			
CHECKED:	GAT	09/20/05		02.21.96	PNcorr. Mat/finish updated. Show jack w/o cover	JF	JF	TO 2 DECIMAL PLACES: ±	TITLE:	DUAL BANTAM JACK
APPROVED:	JF	09/20/05		10.19.04	Added stand-offs Dims	GAT	TF	TO 3 DECIMAL PLACES: ±		
				09.20.05	New Ind.Part'RoHS compliant'.Specs. Note:X=colors	GAT	JF	AS ANGLES: ±	SHEET:	2 OF 2
3RD ANGLE			UNIT:	IN[mm]	SCALE:	REV:	D			