

1

2

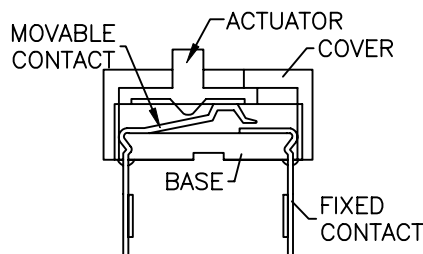
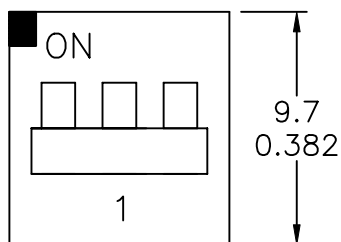
3

4

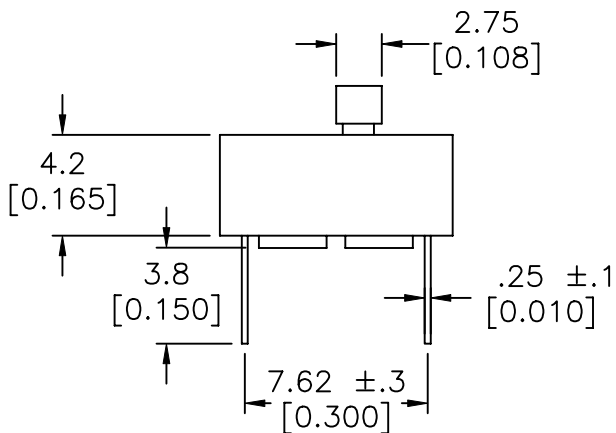
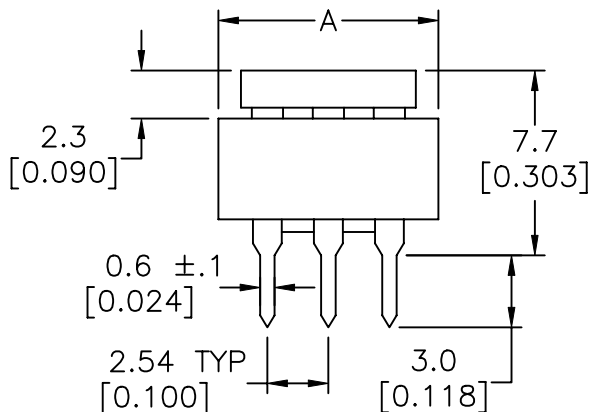
COMPONENT SPECIFICATION

USE OR REPRODUCTION OF THIS DRAWING FOR THE PURPOSE OF MANUFACTURING THIS ARTICLE OR ANY ARTICLES SHOWN FOR ANY PURPOSE IS STRICTLY PROHIBITED WITHOUT WRITTEN PERMISSION FROM SENIOR INDUSTRIES, INC.

A

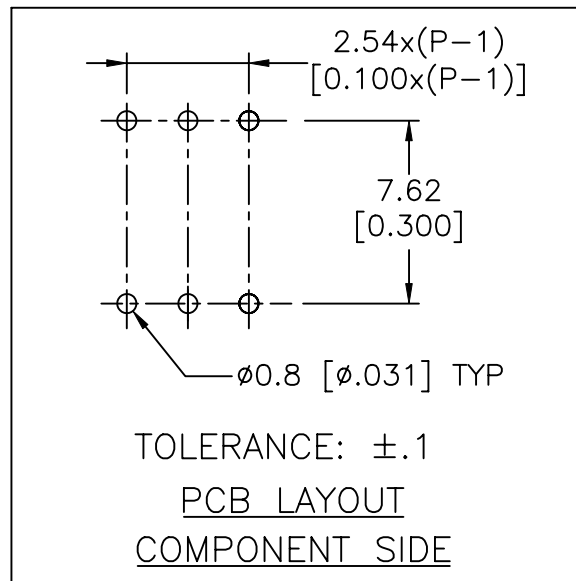
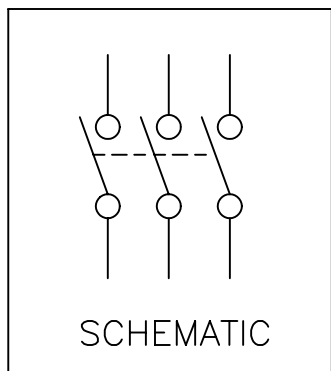


B



SRDS401S SHOWN

C



D

POSITIONS	1	2	3	4	5
A	9.2 [0.362]	16.7 [0.657]	24.2 [0.953]	31.8 [1.252]	39.5 [1.555]

E

DESIGNED:			SYM.	DATE:	DESCRIPTION OF REVISIONS:	DRAWN	APPD.
DRAWN:	GAT	09/19/06	▲	09.19.06	NEW	GAT	JF
CHECKED:	GAT	09/19/06	▲	. .			
APPROVED:	JF	09/19/06	▲	. .			
3RD ANGLE				UNIT:	mm[IN]	SCALE:	3:1
						REV.	A



TOLERANCE:		PART NO:
TO 1 DECIMAL PLACE:	±.3	SRDS4XX
TO 2 DECIMAL PLACES:	±.2	TITLE:
AS ANGLES:	±1/2'	DIP SWITCH
SHEET:		1 OF 3

1

2

3

4

COMPONENT
SPECIFICATIONUSE OR REPRODUCTION OF THIS DRAWING FOR THE PURPOSE OF MANUFACTURING THIS
ARTICLE OR ANY ARTICLES SHOWN FOR ANY PURPOSE IS STRICTLY PROHIBITED WITHOUT
WRITTEN PERMISSION FROM SENIOR INDUSTRIES, INC.SPECIFICATIONSELECTRICAL:

CIRCUIT TYPE: 3PST
 CONTACT RATING:
 SWITCHING: 25mA @ 24 VDC
 NON-SWITCHING: 100mA @ 50 VDC
 CONTACT RESISTANCE: 50 MILLIOHMS MAX.
 INSULATION RESISTANCE: 1000 MEGOHMS MIN. AT 100 VDC
 DIELECTRIC STRENGTH: 500 VRMS MIN. FOR 1 MINUTE

MECHANICAL:

LIFE: 2000 CYCLES MIN.
 OPERATION FORCE: 800g MAX.

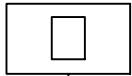
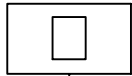
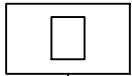
ENVIRONMENTAL:

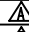
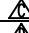
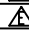
OPERATING TEMPERATURE: -25°C TO 70°C
 STORAGE TEMPERATURE: -40°C TO +85°C

MATERIAL:

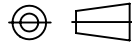
HOUSING: GLASS FILLED POLYESTER, UL94V-0
 TERMINALS: PHOSPHOR BRONZE, 0.25t
 PLATING: CONTACT AREA - GOLD PLATING OVER NICKEL
 TERMINATION AREA - GOLD OVER NICKEL

PART NUMBER BUILDER:

MODEL	TYPE	POSITIONS	ACTUATOR
SRDS			
	4=3PST	01 02 03 04 05	S = STANDARD ST = STANDARD WITH TOP TAPE SEALED R = RIGHT ANGLE RT = RIGHT ANGLE WITH TOP TAPE SEALED

DESIGNED:			SYM.	DATE:	DESCRIPTION OF REVISIONS:	DRAWN	APPD.
DRAWN:	GAT	09/19/06		09.19.06	NEW	GAT	JF
CHECKED:	GAT	09/19/06		. .			
APPROVED:	JF	09/19/06		. .			

3RD ANGLE



UNIT:

mm[IN]

SCALE:

REV.

A

**SENIOR
INDUSTRIES, INC.**

TOLERANCE:

TO 1 DECIMAL PLACE: ±

TO 2 DECIMAL PLACES: ±

AS ANGLES: ±

SHEET:

PART NO:

SRDS4XX

TITLE:

DIP SWITCH

2 OF 3

1

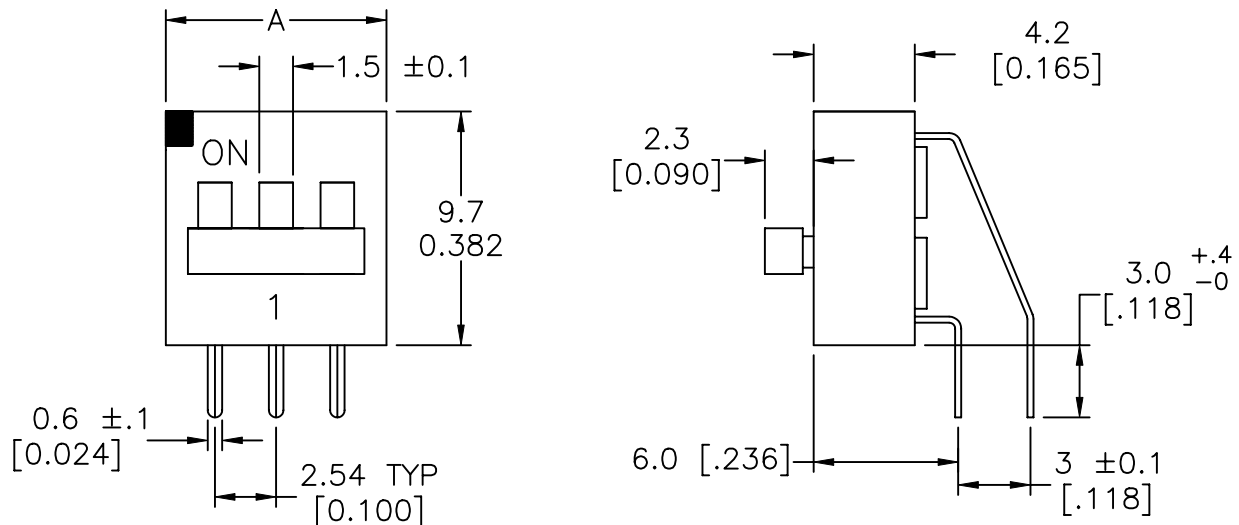
2

3

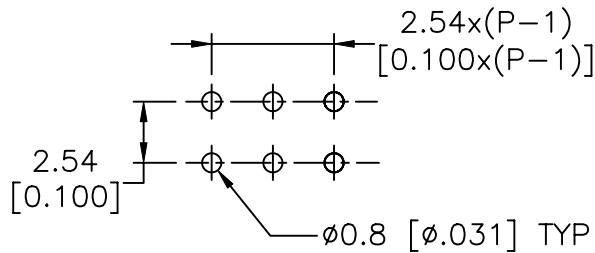
4

COMPONENT
SPECIFICATIONUSE OR REPRODUCTION OF THIS DRAWING FOR THE PURPOSE OF MANUFACTURING THIS
ARTICLE OR ANY ARTICLES SHOWN FOR ANY PURPOSE IS STRICTLY PROHIBITED WITHOUT
WRITTEN PERMISSION FROM SENIOR INDUSTRIES, INC.

RIGHT ANGLE ACTUATOR OPTION (R/RT):



SRDS401R SHOWN

TOLERANCE: ± 0.1 PCB LAYOUT
COMPONENT SIDE

POSITIONS	1	2	3	4	5
A	9.2 [0.362]	16.7 [0.657]	24.2 [0.953]	31.8 [1.252]	39.5 [1.555]

DESIGNED:

SYM.

DATE:

DESCRIPTION OF REVISIONS:

DRAWN

APPD.

DRAWN:

GAT

09/19/06

▲

09.19.06

NEW

GAT

JF

CHECKED:

GAT

09/19/06

▲

. .

. .

APPROVED:

JF

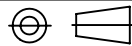
09/19/06

▲

. .

. .

3RD ANGLE



UNIT:

mm[IN]

SCALE:

3:1

REV.

A

SENIOR
INDUSTRIES, INC.

TOLERANCE:

TO 1 DECIMAL PLACE: ± 0.3 TO 2 DECIMAL PLACES: ± 0.2 AS ANGLES: $\pm 1/2^\circ$

SHEET:

PART NO:

SRDS4XX

TITLE:

DIP SWITCH

3 OF 3