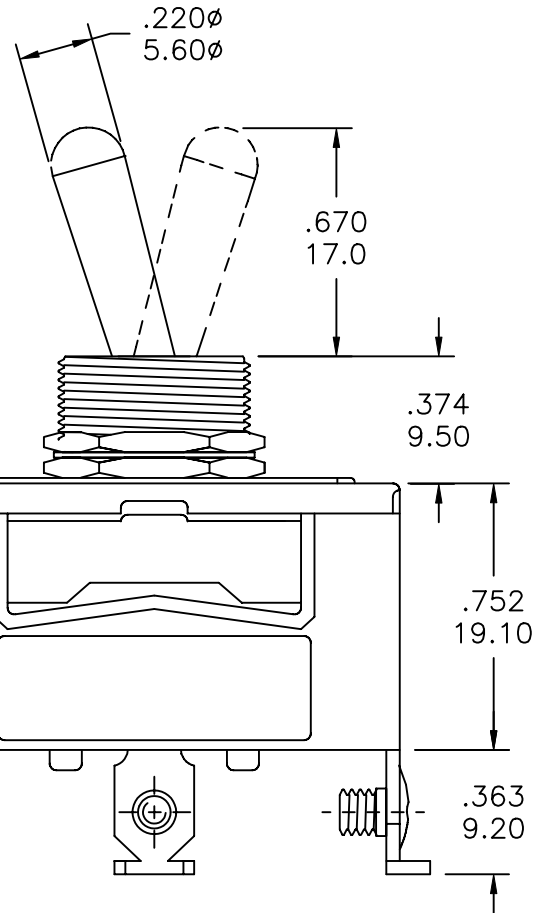
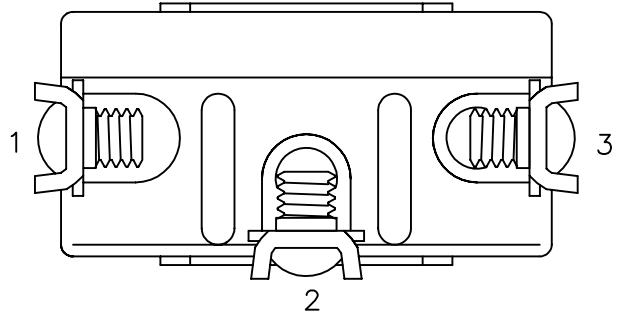
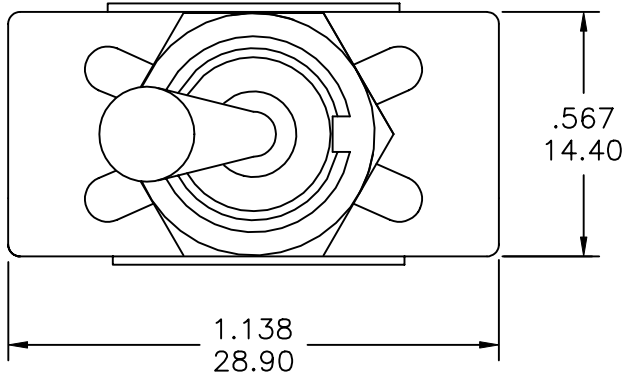


COMPONENT SPECIFICATION

USE OR REPRODUCTION OF THIS DRAWING FOR THE PURPOSE OF MANUFACTURING THIS ARTICLE OR ANY ARTICLES SHOWN FOR ANY PURPOSE IS STRICTLY PROHIBITED WITHOUT WRITTEN PERMISSION FROM SENIOR INDUSTRIES, INC.



MODEL NO.	SWITCHING POSITION		
7712	ON	NONE	ON
7713	MOM	NONE	ON
7714	ON	OFF	ON
7715	MOM	OFF	ON
7716	MOM	OFF	MOM
CONN. TERMS	2-3	OPEN	2-1
SCHEMATIC	SPDT		

NOTE: RUBBER BOOT AVAILABLE, SR PART NUMBER: SRLT-RB.

DESIGNED:	DATE	DESCRIPTION OF REVISIONS	DRAWN	APPD.
DRAWN: RT	10/10/01	NEW	RB	JF
CHECKED: GAT	10/27/05	Corr cont rate: 10 ->15A @ 250V	RB	TF
APPROVED: JF	10/27/05	New Index, Note added, gen dwg/spec updated	GAT	JF

3RD ANGLE		UNIT: mm	SCALE:	REV.	C
-----------	--	----------	--------	------	---



TOLERANCE:	PART NO:
TO 1 DECIMAL PLACE: ±.2	SEE CHART
TO 2 DECIMAL PLACES: ±.10	TITLE: SRLT-7712 - 7716
AS ANGLES: ±1/2°	TOGGLE SWITCHES
SHEET:	1 OF 4

COMPONENT SPECIFICATION

USE OR REPRODUCTION OF THIS DRAWING FOR THE PURPOSE OF MANUFACTURING THIS ARTICLE OR ANY ARTICLES SHOWN FOR ANY PURPOSE IS STRICTLY PROHIBITED WITHOUT WRITTEN PERMISSION FROM SENIOR INDUSTRIES, INC.

SPECIFICATIONS

ELECTRICAL

CONTACT RATING: 15A @ 250 VAC, 20A @ 125 VAC
CONTACT RESISTANCE: 20 MILLIOHMS MAX.
INSULATION RESISTANCE: 200 MEGOHMS MIN. AT 500 VDC
DIELECTRIC STRENGTH: 1,500 VRMS

MECHANICAL

LIFE: 40,000 CYCLES

ENVIRONMENTAL

OPERATING TEMPERATURE: -30°C TO +85°C

MATERIAL

ACTUATOR: BRASS, CHROME PLATED
BUSHING: BRASS, NICKEL PLATED
SUPPORT: BRASS, TIN PLATED
CONTACT: SILVER ALLOY
TERMINALS: H1/H2 - BRASS, NICKEL PLATED
H3 - BRASS, TIN PLATED
H4/H5 - BARE BRASS

REGULATORY:

UL AND CANADA RECOGNIZED COMPONENT. UL/CUL FILE NO. E173084.

PART NUMBER BUILDER:

SERIES	MODEL NO.	CASE	ACTUATOR	BUSHING	TERMINATION
SRLT -		-			
	7712	M (METAL)	T1	B1	H1 (SCREW/SHORT)
	7713	P (PLASTIC)	T2	B2	H2 (SCREW/LONG)
	7714		T3	B3	H3 (SOLDER)
	7715		T4	B4	H4 (FLAT)
	7716				H5

DESIGNED:			SYM.	DATE	DESCRIPTION OF REVISIONS	DRAWN	APPD.
DRAWN:	RT	10/10/01		10.10.01	NEW	RB	JF
CHECKED:	GAT	10/27/05		05.01.03	Corr cont rate: 10 ->15A @ 250V	RB	TF
APPROVED:	JF	10/27/05		10.09.05	New Index, Note added, gen dwg/spec updated	GAT	JF
				.			

3RD ANGLE		UNIT: mm	SCALE:	REV.	C
-----------	--	----------	--------	------	---



TOLERANCE:	PART NO:
TO 1 DECIMAL PLACE: ±	SEE CHART
TO 2 DECIMAL PLACES: ±	TITLE: SRLT-7712 - 7716
AS ANGLES: ±	TOGGLE SWITCHES
SHEET:	2 OF 4

1

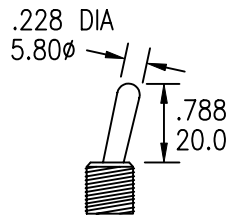
2

3

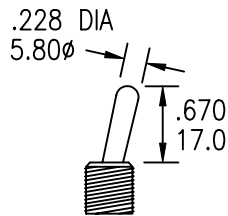
4

COMPONENT
SPECIFICATIONUSE OR REPRODUCTION OF THIS DRAWING FOR THE PURPOSE OF MANUFACTURING THIS
ARTICLE OR ANY ARTICLES SHOWN FOR ANY PURPOSE IS STRICTLY PROHIBITED WITHOUT
WRITTEN PERMISSION FROM SENIOR INDUSTRIES, INC.

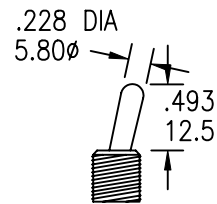
ACTUATOR OPTIONS



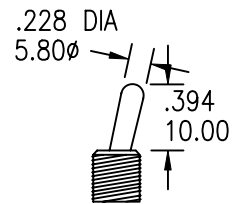
T1



T2

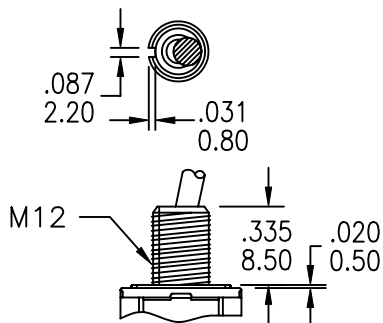


T3

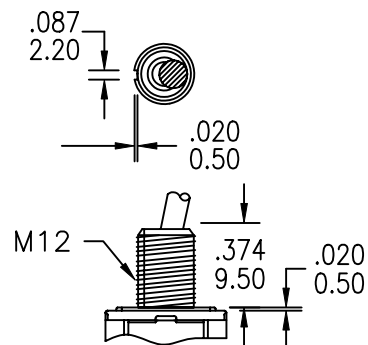


T4

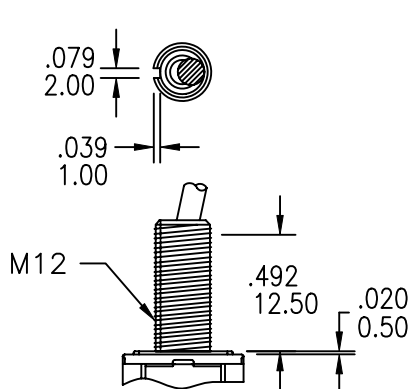
BUSHING OPTIONS



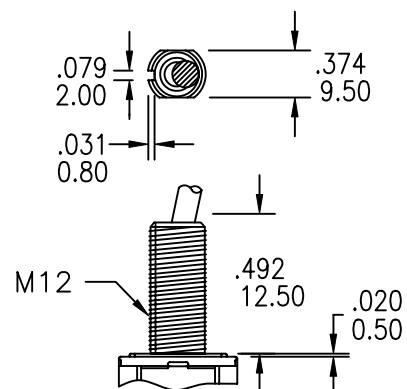
B1



B2



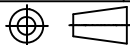
B3



B4

DESIGNED:			SYM.	DATE	DESCRIPTION OF REVISIONS	DRAWN	APPD.
			▲	10.10.01	NEW	RB	JF
DRAWN:	RT	10/10/01	▲	05.01.03	Corr cont rate: 10 -->15A @ 250V	RB	TF
CHECKED:	GAT	10/27/05	▲	10.09.05	New Index, Note added, gen dwg/spec updated	GAT	JF
APPROVED:	JF	10/27/05	▲				

3RD ANGLE



UNIT:

mm

SCALE:

REV.

C

SENIOR
INDUSTRIES, INC.

TOLERANCE:

TO 1 DECIMAL PLACE: ±.2

TO 2 DECIMAL PLACES: ±.10

AS ANGLES: ±1/2

SHEET:

PART NO:

SEE CHART

TITLE:

SRLT-7712 - 7716
TOGGLE SWITCHES

3 OF 4

1

2

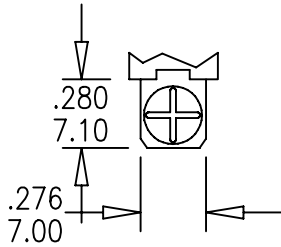
3

4

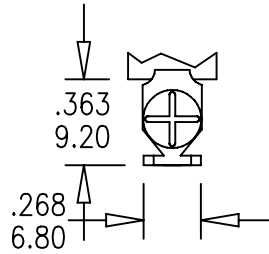
COMPONENT SPECIFICATION

USE OR REPRODUCTION OF THIS DRAWING FOR THE PURPOSE OF MANUFACTURING THIS ARTICLE OR ANY ARTICLES SHOWN FOR ANY PURPOSE IS STRICTLY PROHIBITED WITHOUT WRITTEN PERMISSION FROM SENIOR INDUSTRIES, INC.

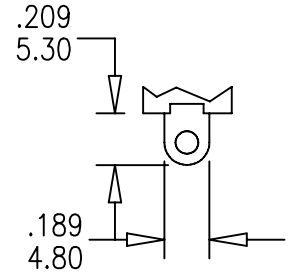
TERMINATION OPTIONS



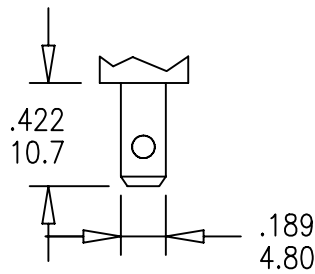
H1 (SCREW/SHORT)



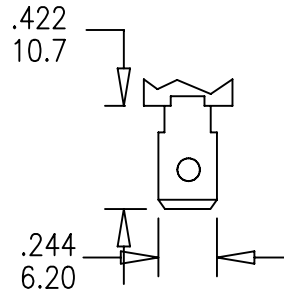
H2 (SCREW/LONG)



H3 (SOLDER)



H4 (FLAT/STRAIGHT)



H5 (FLAT/ANGLED)

DESIGNED:			SYM.	DATE	DESCRIPTION OF REVISIONS	DRAWN	APPD.
DRAWN:	RT	10/10/01	▲	10.10.01	NEW	RB	JF
CHECKED:	GAT	10/27/05	▲	05.01.03	Corr cont rate: 10 ->15A @ 250V	RB	TF
APPROVED:	JF	10/27/05	▲	10.09.05	New Index, Note added, gen dwg/spec updated	GAT	JF
			▲	.			
			▲	.			

3RD ANGLE		UNIT:	mm	SCALE:		REV.	C
-----------	--	-------	----	--------	--	------	---



TOLERANCE:	PART NO:
TO 1 DECIMAL PLACE: ±.2	SEE CHART
TO 2 DECIMAL PLACES: ±.10	TITLE: SRLT-7712 - 7716
AS ANGLES: ±1/2"	TOGGLE SWITCHES
SHEET:	4 OF 4