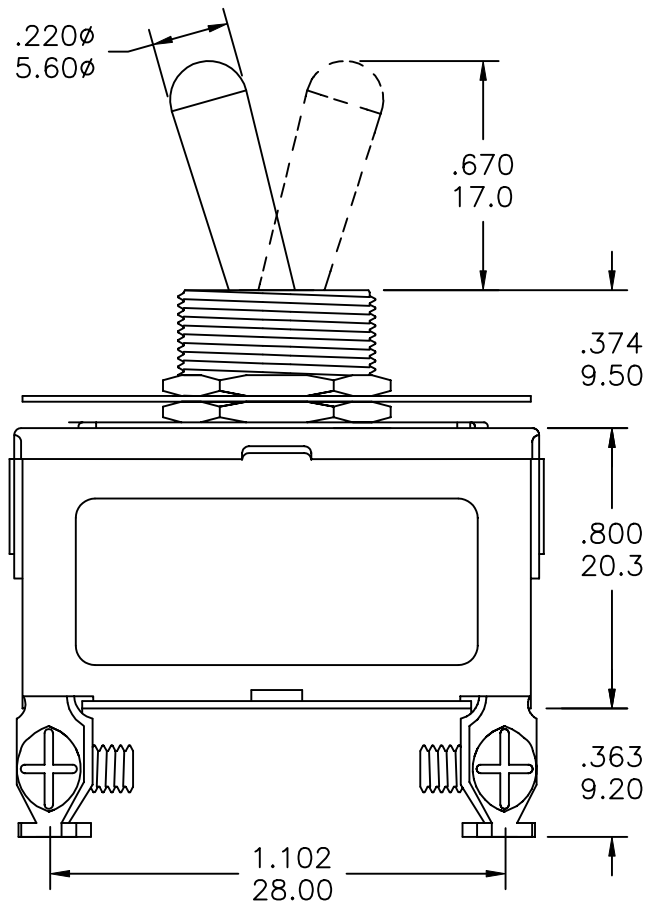
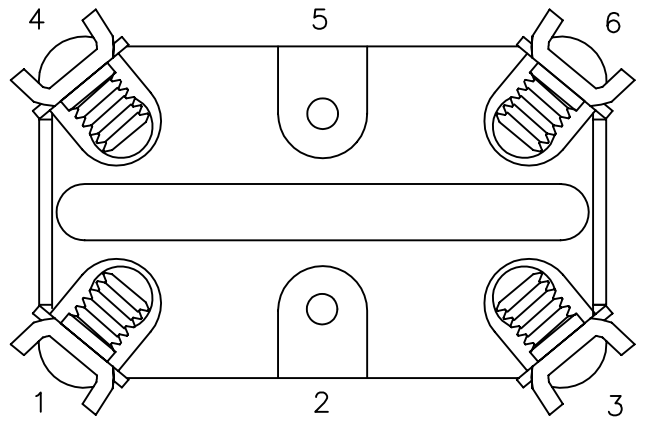
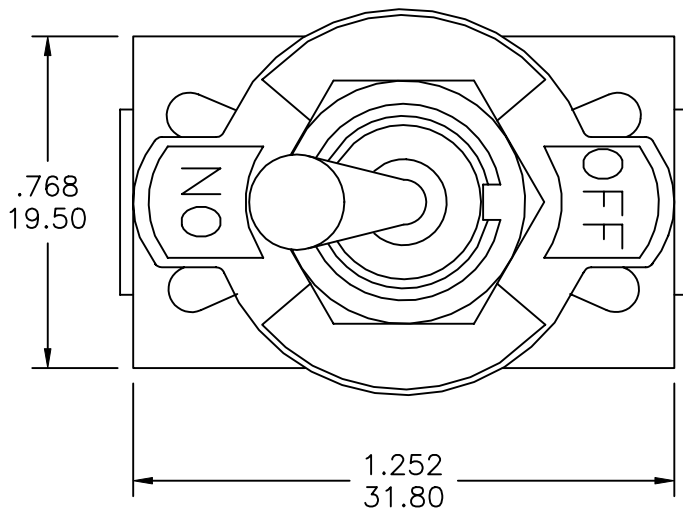





COMPONENT SPECIFICATION

USE OR REPRODUCTION OF THIS DRAWING FOR THE PURPOSE OF MANUFACTURING THIS ARTICLE OR ANY ARTICLES SHOWN FOR ANY PURPOSE IS STRICTLY PROHIBITED WITHOUT WRITTEN PERMISSION FROM SENIOR INDUSTRIES, INC.

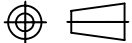
A  
B  
C  
D  
E



MODEL NO.	SWITCHING POSITION		
			
7720	ON	NONE	OFF
7721	MOM	NONE	OFF
CONN. TERMS	1-3 4-6	NONE	OPEN
NO. POLES	DPST		

NOTE: RUBBER BOOT AVAILABLE, SR PART NUMBER: SRLT-RB.

DESIGNED:	DRAWN:	CHECKED:	APPROVED:	SYM.	DATE	DESCRIPTION OF REVISIONS	DRAWN	APPD.
	RT	GAT	JF	△	07.22.02	Reversed rev B & changed SPDT to DPST	RB	TF
				△	02.28.03	Corr rating from 10 to 15A @ 250VAC	RB	TF
				△	10.19.05	New Index, Note added, gen dwg/spec updated	GAT	JF
				△				

3RD ANGLE		UNIT: mm	SCALE: 2:1	REV. E
-----------	---	----------	------------	--------



TOLERANCE:	PART NO:
TO 1 DECIMAL PLACE: ±.2	SEE CHART
TO 2 DECIMAL PLACES: ±.10	TITLE: SRLT-7720/7721 TOGGLE SWITCHES
AS ANGLES: ±1/2°	
SHEET:	1 OF 4

1

2

3

4

COMPONENT  
SPECIFICATIONUSE OR REPRODUCTION OF THIS DRAWING FOR THE PURPOSE OF MANUFACTURING THIS  
ARTICLE OR ANY ARTICLES SHOWN FOR ANY PURPOSE IS STRICTLY PROHIBITED WITHOUT  
WRITTEN PERMISSION FROM SENIOR INDUSTRIES, INC.SPECIFICATIONSELECTRICAL

CONTACT RATING: 15A @ 250 VAC, 20A @ 125 VAC  
 CONTACT RESISTANCE: 20 MILLIOHMS MAX.  
 INSULATION RESISTANCE: 200 MEGOHMS MIN. AT 500 VDC  
 DIELECTRIC STRENGTH: 1,500 VRMS

MECHANICAL

LIFE: 40,000 CYCLES

ENVIRONMENTAL

OPERATING TEMPERATURE: -30°C TO +85°C

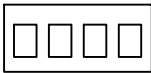
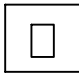
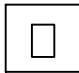
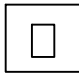
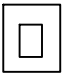
MATERIAL

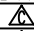
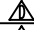
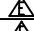
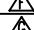
ACTUATOR: BRASS, CHROME PLATED  
 BUSHING: BRASS, NICKEL PLATED  
 SUPPORT: BRASS, TIN PLATED  
 CONTACT: SILVER ALLOY  
 TERMINALS: H1/H2 - BRASS, NICKEL PLATED  
                   H3 - BRASS, TIN PLATED  
                   H4/H5 - BARE BRASS

REGULATORY:

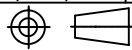
UL AND CANADA RECOGNIZED COMPONENT. UL/CUL FILE NO. E173084.

PART NUMBER BUILDER:

SERIES	MODEL NO.	CASE	ACTUATOR	BUSHING	TERMINATION	
SRLT -		-				
	7720	M (METAL)	T1	B1	H1 (SCREW/SHORT)	
	7721	P (PLASTIC)	T2	B2	H2 (SCREW/LONG)	
			T3	B3	H3 (SOLDER)	
			T4	B4	H4 (FLAT)	
					H5	

DESIGNED:			SYM.	DATE	DESCRIPTION OF REVISIONS	DRAWN	APPD.
DRAWN:	RT	10/10/01		07.22.02	Reversed rev B & changed SPDT TO DPST	RB	TF
CHECKED:	GAT	10/27/05		02.28.03	Corr rating from 10 to 15A @ 250VAC	RB	TF
APPROVED:	JF	10/27/05		10.19.05	New Index, Note added, gen dwg/spec updated	GAT	JF
				.			

3RD ANGLE



UNIT:

mm

SCALE:

REV.

E

**SENIOR  
INDUSTRIES, INC.**

TOLERANCE:

TO 1 DECIMAL PLACE: ±

TO 2 DECIMAL PLACES: ±

AS ANGLES: ±

SHEET:

PART NO:

SEE CHART

TITLE:

SRLT-7720/7721  
TOGGLE SWITCHES

2 OF 4

1

2

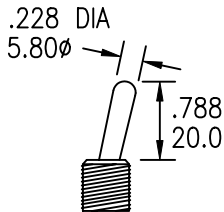
3

4

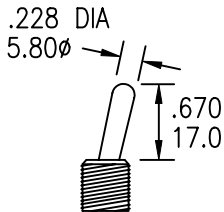
COMPONENT SPECIFICATION

USE OR REPRODUCTION OF THIS DRAWING FOR THE PURPOSE OF MANUFACTURING THIS ARTICLE OR ANY ARTICLES SHOWN FOR ANY PURPOSE IS STRICTLY PROHIBITED WITHOUT WRITTEN PERMISSION FROM SENIOR INDUSTRIES, INC.

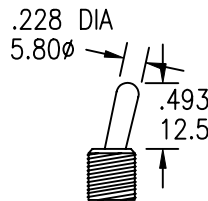
ACTUATOR OPTIONS



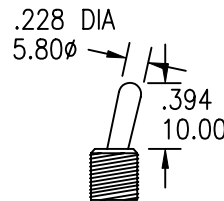
T1



T2

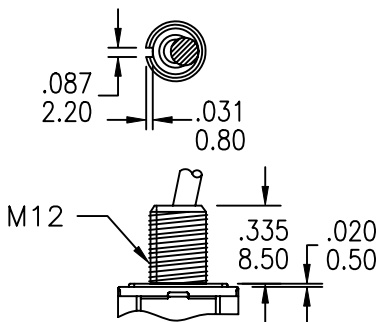


T3

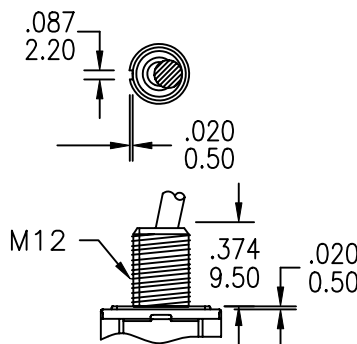


T4

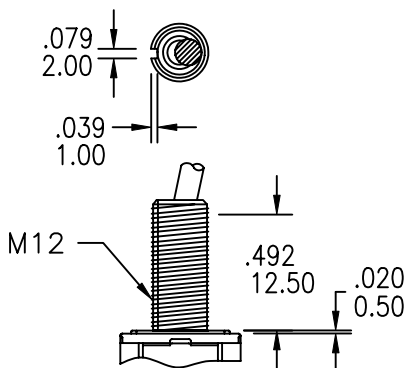
BUSHING OPTIONS



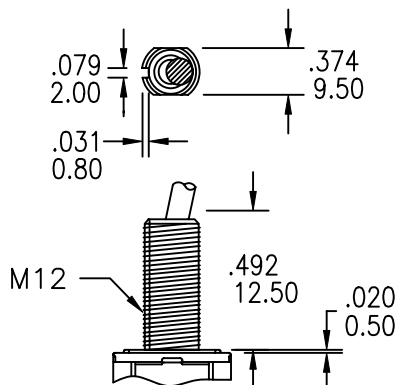
B1



B2



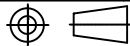
B3



B4

DESIGNED:			SYM.	DATE	DESCRIPTION OF REVISIONS	DRAWN	APPD.
DRAWN:	RT	10/10/01	△	07.22.02	Reversed rev B & changed SPDT to DPST	RB	TF
CHECKED:	GAT	10/27/05	△	02.28.03	Corr rating from 10 to 15A @ 250VAC	RB	TF
APPROVED:	JF	10/27/05	△	10.19.05	New Index, Note added, gen dwg/spec updated	GAT	JF
			△				

3RD ANGLE



UNIT:

mm

SCALE:

REV.

E



SENIOR INDUSTRIES, INC.

TOLERANCE:

TO 1 DECIMAL PLACE:	±.2
TO 2 DECIMAL PLACES:	±.10
AS ANGLES:	±1/2°

PART NO:

SEE CHART

TITLE:

SRLT-7720/7721 TOGGLE SWITCHES

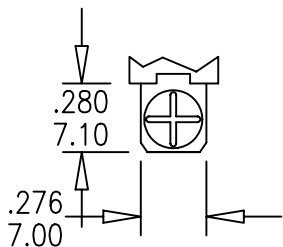
SHEET:

3 OF 4

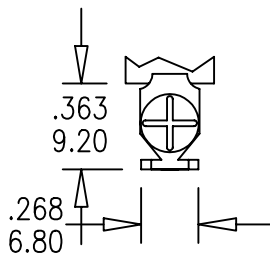
COMPONENT SPECIFICATION

USE OR REPRODUCTION OF THIS DRAWING FOR THE PURPOSE OF MANUFACTURING THIS ARTICLE OR ANY ARTICLES SHOWN FOR ANY PURPOSE IS STRICTLY PROHIBITED WITHOUT WRITTEN PERMISSION FROM SENIOR INDUSTRIES, INC.

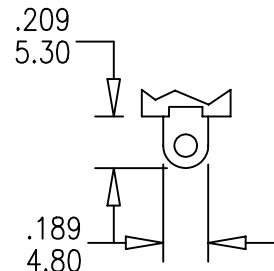
TERMINATION OPTIONS



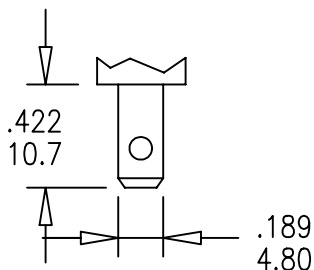
H1 (SCREW/SHORT)



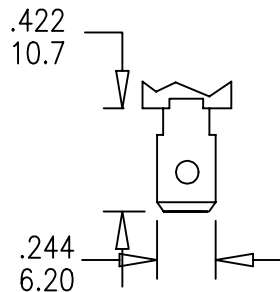
H2 (SCREW/LONG)



H3 (SOLDER)



H4 (FLAT/STRAIGHT)



H5 (FLAT/ANGLED)

DESIGNED:			SYM.	DATE	DESCRIPTION OF REVISIONS	DRAWN	APPD.
DRAWN:	RT	10/10/01	▲	07.22.02	Reversed rev B & changed SPDT TO DPST	RB	TF
CHECKED:	GAT	10/27/05	▲	02.28.03	Corr rating from 10 to 15A @ 250VAC	RB	TF
APPROVED:	JF	10/27/05	▲	10.19.05	New Index, Note added, gen dwg/spec updated	GAT	JF
			▲	.			

3RD ANGLE		UNIT:	mm	SCALE:		REV.	E
-----------	--	-------	----	--------	--	------	---



TOLERANCE:	PART NO:	SEE CHART
TO 1 DECIMAL PLACE: ±.2	TITLE:	SRLT-7720/7721
TO 2 DECIMAL PLACES: ±.10		TOGGLE SWITCHES
AS ANGLES: ±1/2°		
SHEET:		4 OF 4