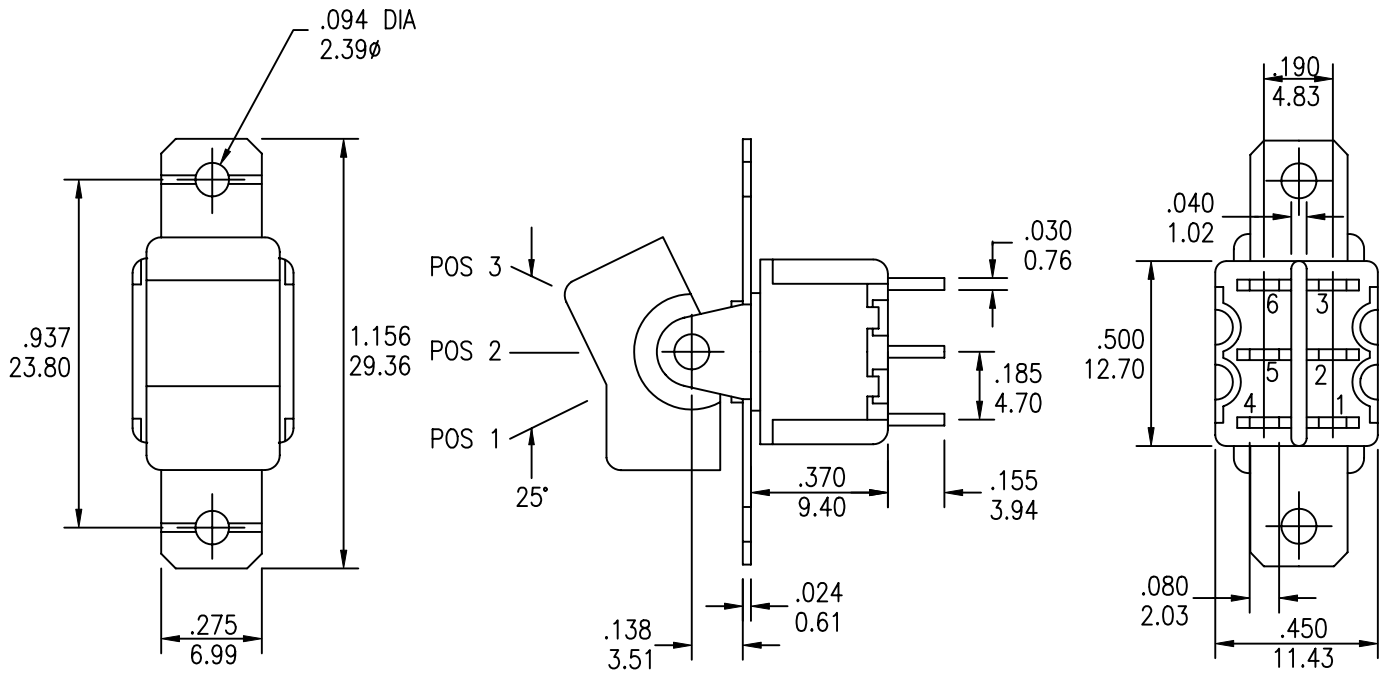
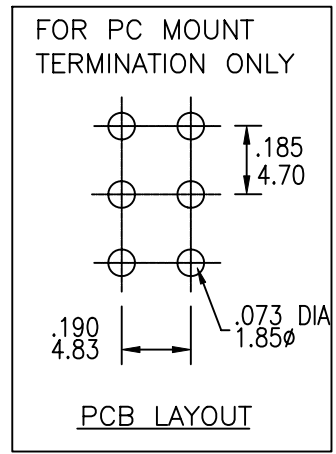


COMPONENT SPECIFICATION

USE OR REPRODUCTION OF THIS DRAWING FOR THE PURPOSE OF MANUFACTURING THIS ARTICLE OR ANY ARTICLES SHOWN FOR ANY PURPOSE IS STRICTLY PROHIBITED WITHOUT WRITTEN PERMISSION FROM SENIOR INDUSTRIES, INC.



MODEL NO.	SWITCHING POSITION		
8017	ON	NONE	ON
8017A	ON	NONE	MOM
8018	ON	OFF	ON
8018A	MOM	OFF	MOM
8018B	ON	OFF	MOM
CONN. TERMS	2-3 5-6	OPEN	2-1 5-4
SCHEMATIC			



DESIGNED:	DATE	SYM.	DATE	DESCRIPTION OF REVISIONS	DRAWN	APPD.
	03.15.01	▲	03.15.01	NEW	RB	
DRAWN:	03/05/01	▲	03.27.01	REMOVED "NON-SHOTING TYPE" NOTE	RB	
CHECKED:		▲				
APPROVED:		▲				

3RD ANGLE		UNIT:	IN [mm]	SCALE:	2:1	REV.	B
-----------	--	-------	---------	--------	-----	------	---



TOLERANCE:	PART NO:
TO 1 DECIMAL PLACE: ±.2	SEE CHART
TO 2 DECIMAL PLACES: ±.10	TITLE:
AS ANGLES: ±	SRMR 8017/8018 ROCKER/PADDLE SWITCHES
SHEET:	1 OF 5

1

2

3

4

COMPONENT  
SPECIFICATIONUSE OR REPRODUCTION OF THIS DRAWING FOR THE PURPOSE OF MANUFACTURING THIS  
ARTICLE OR ANY ARTICLES SHOWN FOR ANY PURPOSE IS STRICTLY PROHIBITED WITHOUT  
WRITTEN PERMISSION FROM SENIOR INDUSTRIES, INC.SPECIFICATIONSELECTRICAL

CONTACT RATING:

SILVER: 5A @ 120 VAC OR 28 VDC, 2A @ 250 VAC

GOLD: 0.4 VA MAX. @ 20 V MAX. (AC OR DC)

CONTACT RESISTANCE: 10 MILLIOHMS MAX.

INSULATION RESISTANCE: 1,000 MEGOHMS MIN. AT 500 VDC

DIELECTRIC STRENGTH: 1,000 VRMS

MECHANICAL

LIFE: 50,000 CYCLES

ENVIRONMENTAL

OPERATING TEMPERATURE: -30°C TO +85°C

MATERIAL

CASE: DAP, UL 94V-0

HOUSING: STAINLESS STEEL

ACTUATOR: NYLON

BUSHING: BRASS, NICKEL PLATED

SUPPORT: BRASS, TIN PLATED

CONTACT/TERMINALS: COPPER ALLOY, SILVER OR GOLD PLATED

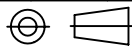
REGULATORY

UL RECOGNIZED COMPONENT. UL FILE NO. E173084.

SERIES	MODEL NO.	ACTUATOR	ACTUATOR COLOR	TERMINATION	CONTACT PLATING	SEAL	VERTICAL SUPPORT BRACKET
SRMR -	<input type="text"/>	- <input type="text"/>	<input type="text"/>	<input type="text"/>	<input type="text"/>	<input type="text"/>	<input type="text"/>
	8017	R11 (ROCKER)	1 - BLUE		Q (SILVER)	BLANK	BLANK
	8017A	R12 (ROCKER W/BEZEL)	2 - RED		R (GOLD)	E (EPOXY)	S30
	8018	R15 (LARGE ROCKER)	3 - BLACK		B (SOLDER LUG) C (PC MOUNT) D (QUICK CONNECT)		S50
	8018A	P13 (PADDLE)	4 - BROWN				
	8018B	P14 (PADDLE W/BEZEL)	5 - GREEN	D1 (WIRE WRAP - .750)			
		P16 (LARGE PADDLE)	6 - WHITE	D2 (WIRE WRAP - .964)			
			7 - GRAY	D3 (WIRE WRAP - .425)			
			8 - ORANGE	D4 (WIRE WRAP - 1.062)			
			9 - YELLOW				
			0 - VIOLET				

DESIGNED:			SYM.	DATE	DESCRIPTION OF REVISIONS	DRAWN	APPD.
			▲	03.15.01	NEW	RB	
DRAWN:	RB	03/05/01	▲	03.27.01	REMOVED "NON-SHOTING TYPE" NOTE	RB	
CHECKED:			▲	.			
APPROVED:			▲	.			

3RD ANGLE



UNIT:

SCALE:

REV.

B


**SENIOR  
INDUSTRIES, INC.**

TOLERANCE:

TO 1 DECIMAL PLACE: ±

TO 2 DECIMAL PLACES: ±

AS ANGLES: ±

SHEET:

PART NO:

SEE CHART

TITLE:

 SRMR 8017/8018  
 ROCKER/PADDLE SWITCHES

2 OF 5

1

2

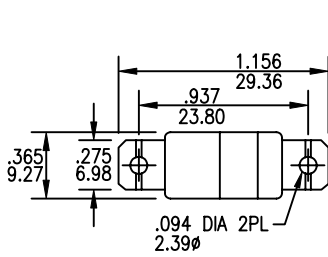
3

4

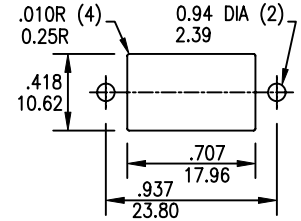
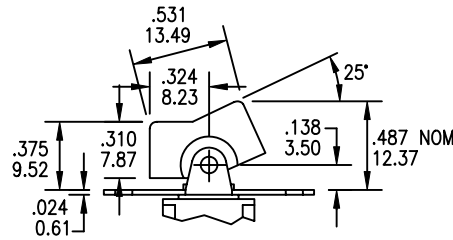
COMPONENT SPECIFICATION

USE OR REPRODUCTION OF THIS DRAWING FOR THE PURPOSE OF MANUFACTURING THIS ARTICLE OR ANY ARTICLES SHOWN FOR ANY PURPOSE IS STRICTLY PROHIBITED WITHOUT WRITTEN PERMISSION FROM SENIOR INDUSTRIES, INC.

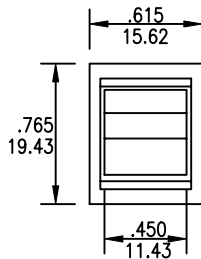
ACTUATOR OPTIONS



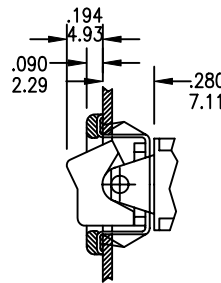
R11



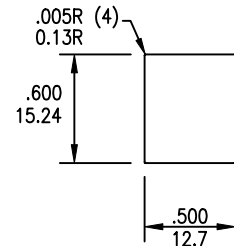
PANEL MOUNTING



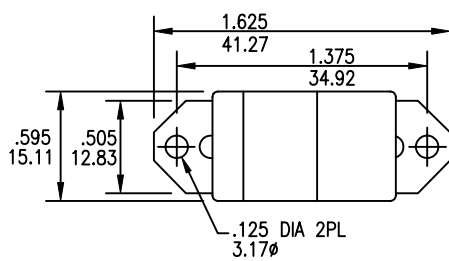
R12



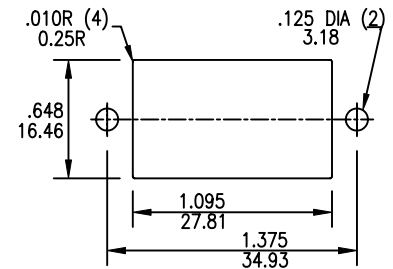
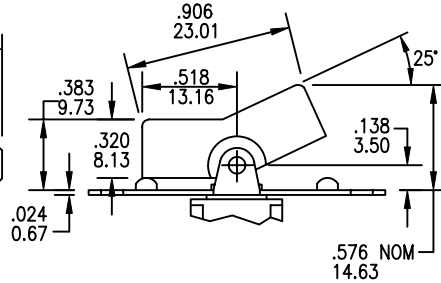
PANEL THICKNESS  
.047 TO .125  
1.19 TO 3.18



PANEL MOUNTING



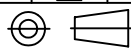
R15



PANEL MOUNTING

DESIGNED:		SYM.	DATE	DESCRIPTION OF REVISIONS	DRAWN	APPD.
		▲	03.15.01	NEW	RB	
DRAWN:	RB 03/05/01	▲	03.27.01	REMOVED "NON-SHOTING TYPE" NOTE	RB	
CHECKED:		▲	.			
APPROVED:		▲	.			

3RD ANGLE



UNIT:

SCALE:

REV.

B



TOLERANCE:

TO 1 DECIMAL PLACE:	±
TO 2 DECIMAL PLACES:	±
AS ANGLES:	±

SHEET:

PART NO:

SEE CHART

TITLE:

SRMR 8017/8018  
ROCKER/PADDLE SWITCHES

3 OF 5

1

2

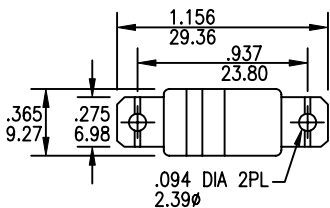
3

4

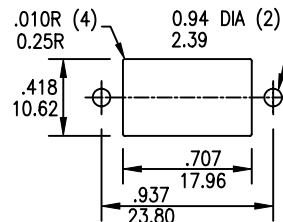
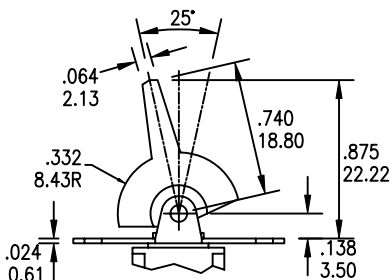
COMPONENT SPECIFICATION

USE OR REPRODUCTION OF THIS DRAWING FOR THE PURPOSE OF MANUFACTURING THIS ARTICLE OR ANY ARTICLES SHOWN FOR ANY PURPOSE IS STRICTLY PROHIBITED WITHOUT WRITTEN PERMISSION FROM SENIOR INDUSTRIES, INC.

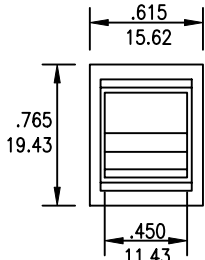
ACTUATOR OPTIONS



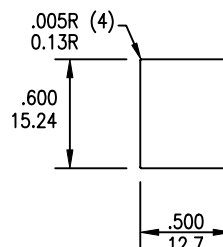
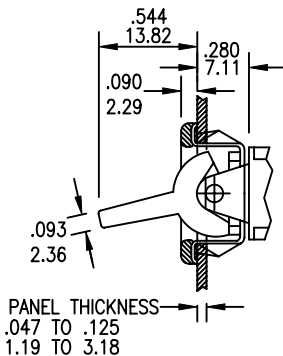
P13



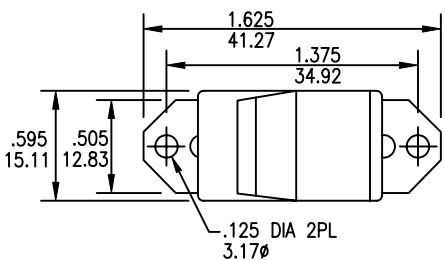
PANEL MOUNTING



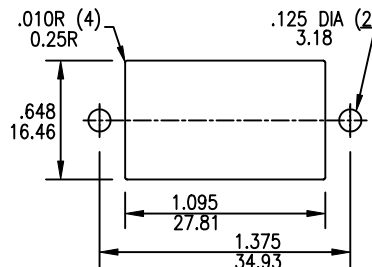
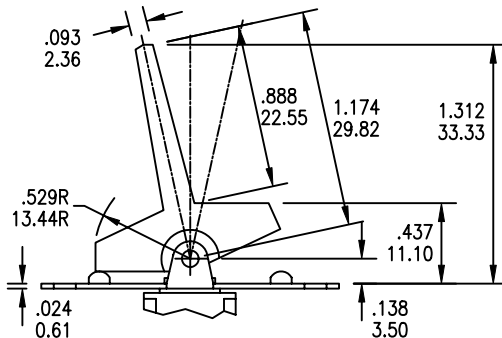
P14



PANEL MOUNTING



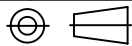
P16



PANEL MOUNTING

DESIGNED:		SYM.	DATE	DESCRIPTION OF REVISIONS	DRAWN	APPD.
DRAWN:	RB 03/05/01	▲	03.15.01	NEW	RB	
CHECKED:		▲	03.27.01	REMOVED "NON-SHOTING TYPE" NOTE	RB	
APPROVED:		▲				
		▲				

3RD ANGLE



UNIT:

SCALE:

REV.

B



TOLERANCE:

TO 1 DECIMAL PLACE:	±
TO 2 DECIMAL PLACES:	±
AS ANGLES:	±

SHEET:

PART NO:

SEE CHART

TITLE:

SRMR 8017/8018  
ROCKER/PADDLE SWITCHES

4 OF 5

1

2

3

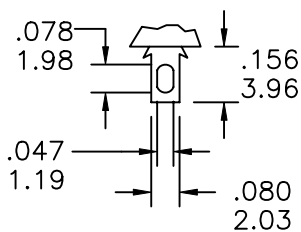
4

COMPONENT SPECIFICATION

USE OR REPRODUCTION OF THIS DRAWING FOR THE PURPOSE OF MANUFACTURING THIS ARTICLE OR ANY ARTICLES SHOWN FOR ANY PURPOSE IS STRICTLY PROHIBITED WITHOUT WRITTEN PERMISSION FROM SENIOR INDUSTRIES, INC.

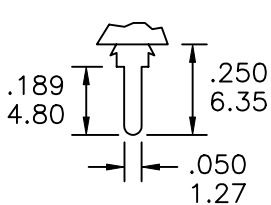
TERMINATION OPTIONS

SOLDER LUG



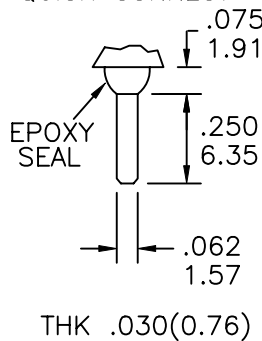
B

PC MOUNT



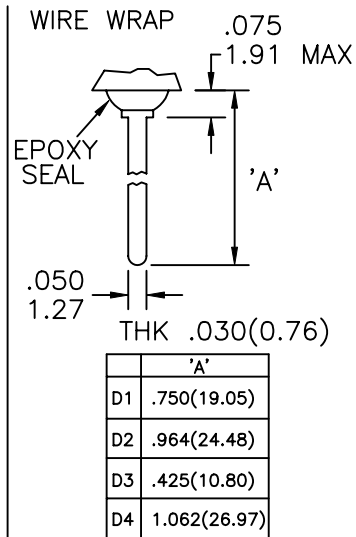
C

QUICK CONNECT

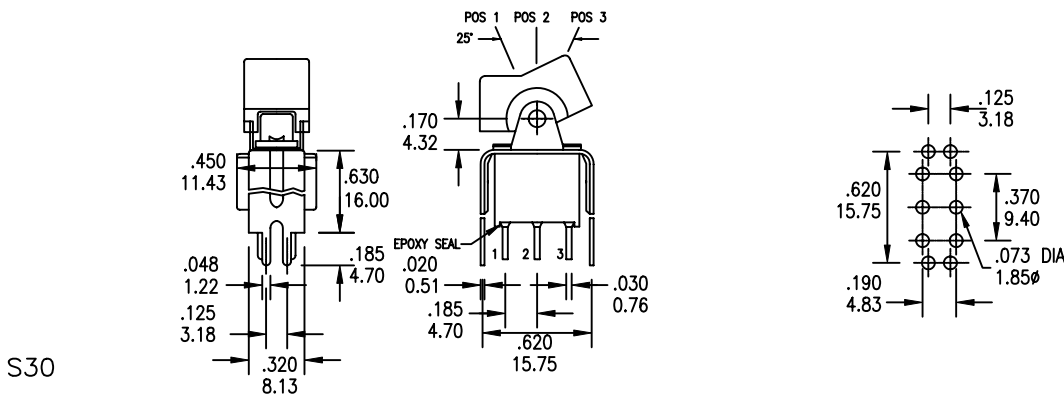


D

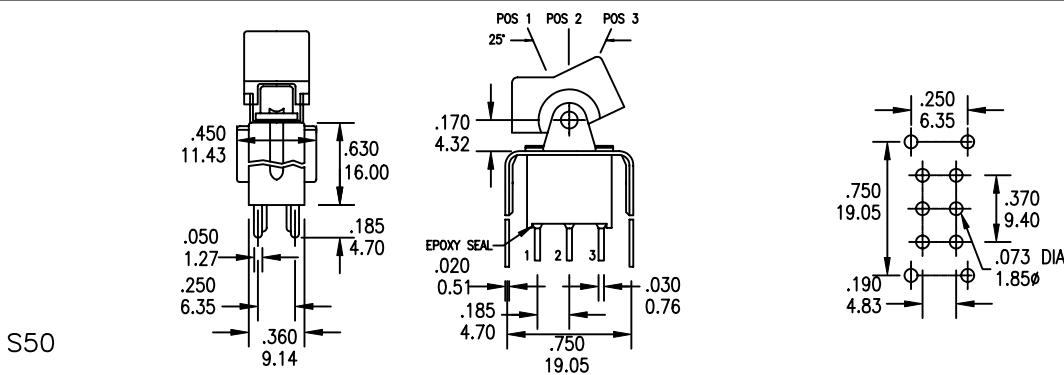
WIRE WRAP



VERTICAL SUPPORT BRACKET



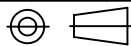
S30



S50

DESIGNED:		SYM.	DATE	DESCRIPTION OF REVISIONS	DRAWN	APPD.
DRAWN:	RB 03/05/01	△	03.15.01	NEW	RB	
CHECKED:		△	03.27.01	REMOVED "NON-SHOTING TYPE" NOTE	RB	
APPROVED:		△	.			
		△	.			

3RD ANGLE



UNIT:

SCALE:

REV.

B



SENIOR INDUSTRIES, INC.

TOLERANCE:

TO 1 DECIMAL PLACE:	±
TO 2 DECIMAL PLACES:	±
AS ANGLES:	±

PART NO:

SEE CHART

TITLE:

SRMR 8017/8018  
ROCKER/PADDLE SWITCHES

SHEET:

5 OF 5