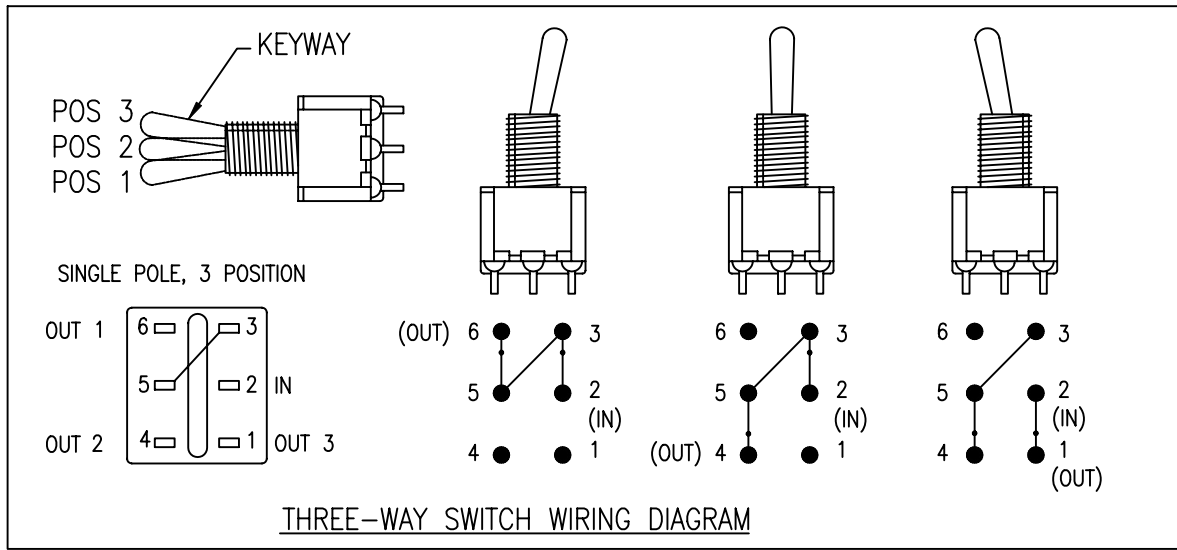
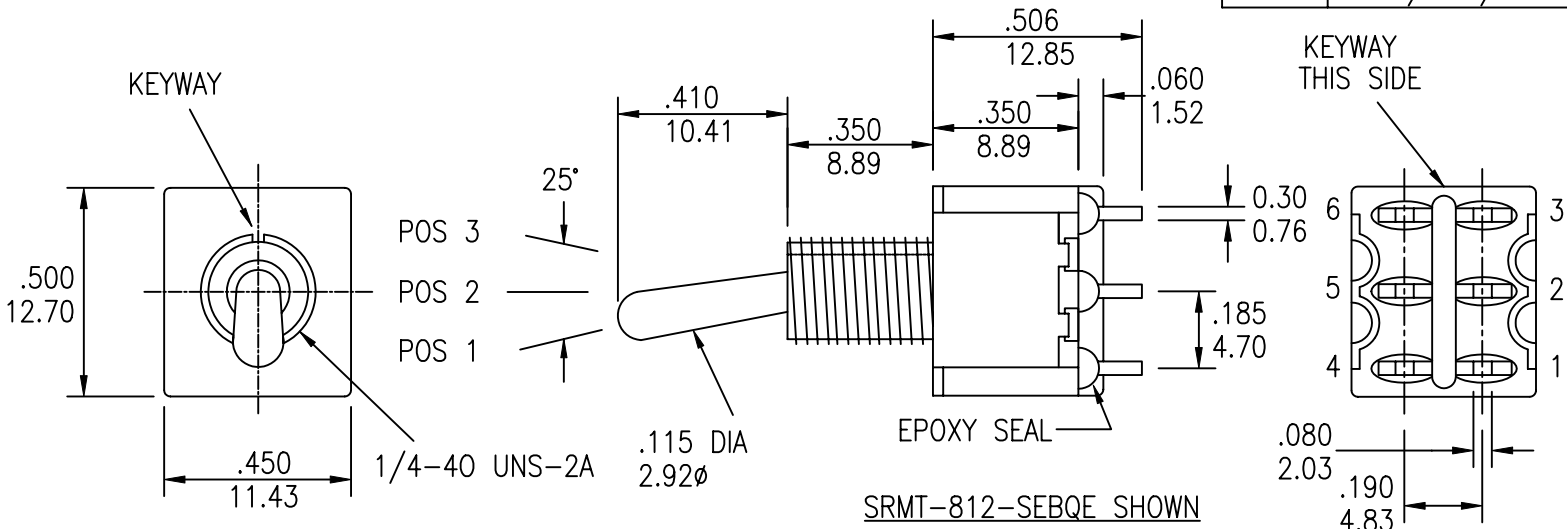


UNLESS OTHERWISE SPECIFIED, ALL DIMENSIONS ARE IN INCHES [MM].

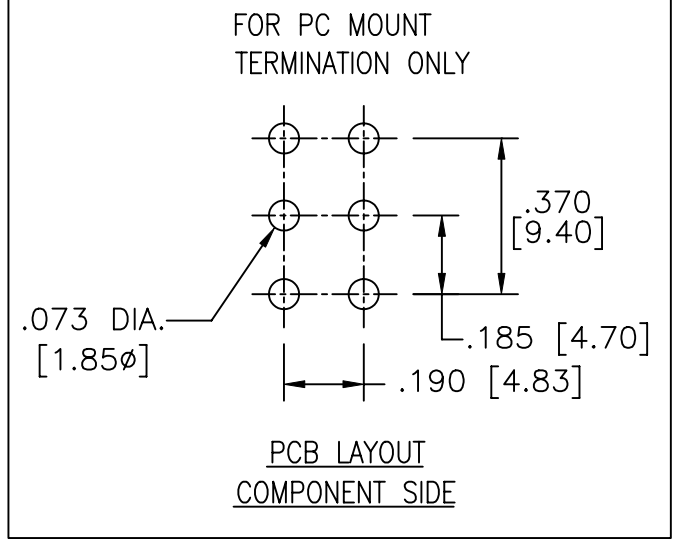
TO 1 DECIMAL PLACE ±.2
 TO 2 DECIMAL PLACES ±.10
 AS ANGLES ±

| ISSUE | DATE |
|-------|----------|
| B | 09/29/04 |
| C | 02/14/08 |



| MODEL NO. | SWITCHING POSITION | | |
|-------------|--------------------|------------|------------|
| | | | |
| 812 | ON | ON | ON |
| 812A | MOM | ON | MOM |
| 812B | ON | ON | MOM |
| CONN. TERMS | 2-3 5-6 | 2-3 5-4 | 2-1 5-4 |

NON-SHORTING TYPE



| | | | | | |
|----------------------|-----------|---------------------------|------------|---------------|--|
| TITLE: TOGGLE SWITCH | | PART NO: SRMT-812X-XXXXXX | | | |
| DATE: 03/05/01 | DRAWN: RB | CHKD: GAT/JF | SCALE: 2/1 | SHEET: 1 OF 6 | |

UNLESS OTHERWISE SPECIFIED, ALL DIMENSIONS ARE IN INCHES [MM].

TO 1 DECIMAL PLACE ±.2
 TO 2 DECIMAL PLACES ±.10
 AS ANGLES ±

| ISSUE | DATE |
|-------|----------|
| A | 03/05/01 |
| B | 09/29/04 |
| C | 02/14/08 |

SPECIFICATIONS

ELECTRICAL

CONTACT RATING:

SILVER: 5A @ 120 VAC OR 28 VDC, 2A @ 250 VAC

GOLD: 0.4 VA MAX. @ 20 V MAX. (AC OR DC)

CONTACT RESISTANCE: 10 MILLIOHMS MAX.

INSULATION RESISTANCE: 1,000 MEGOHMS MIN. AT 500 VDC

DIELECTRIC STRENGTH: 1,000 VRMS

MECHANICAL

LIFE: 40,000 CYCLES

ENVIRONMENTAL

OPERATING TEMPERATURE: -30°C TO +85°C

MATERIAL

CASE: DAP, UL 94V-0

HOUSING: STAINLESS STEEL

ACTUATOR: BRASS, CHROME PLATED

BUSHING: BRASS, NICKEL PLATED

SUPPORT: BRASS, TIN PLATED

CONTACT/TERMINALS: COPPER ALLOY, SILVER OR GOLD PLATED

REGULATORY

UL AND CANADA ROCOGNIZED COMPONENT. UL/CUL FILE NO. E173084.

PART NUMBER BUILDER:

| SERIES | MODEL NO. | ACTUATOR | BUSHING | TERMINATION | CONTACT PLATING | SEAL | VERTICAL SUPPORT BRACKET | |
|--------|----------------------|------------------------|----------------------------|----------------------------------------------------------------------------------------------------------------------------------------------------------|----------------------|----------------------|--------------------------|-----|
| SRMT - | <input type="text"/> | - <input type="text"/> | <input type="text"/> | <input type="text"/> | <input type="text"/> | <input type="text"/> | <input type="text"/> | |
| | 812 | S (STD) | BLANK (Z/Z1 ONLY) | | Q (SILVER) | BLANK | BLANK | |
| | 812A | T | E (STD - THD) | | R (GOLD) | E (EPOXY) | S20 | |
| | 812B | X (LONG) | E1 (STD - THD) (U ONLY) | B (SOLDER LUG) C (PC MOUNT) D (QUICK CONNECT) D1 (WIRE WRAP - .736) D2 (WIRE WRAP - .953) D3 (WIRE WRAP - .415) D4 (WIRE WRAP - 1.062) | | | S30 | |
| | | W (LONG) | E2 (STD - THD) (U ONLY) | | | | | S40 |
| | | V (LONG) | M (STD - NON-THD) | | | | | S50 |
| | | U (FLATTED) | M1 (STD - NON-THD)(U ONLY) | | | | | |
| | | Z (LARGE TOGGLE) | M2 (STD - NON-THD)(U ONLY) | | | | | |
| | | Z1 (LARGE) | F (THD) | | | | | |
| | | Y (PLASTIC) | N (NON-THD) | | | | | |
| | | LL1 (LOCKING LEVER) | G (HIGH TORQUE) | | | | | |
| | | | H (HIGH TORQUE) | | | | | |
| | | | J (LONG) | | | | | |
| | | | K (METRIC) | | | | | |
| | | | L (SPLASH-PROOF) | | | | | |



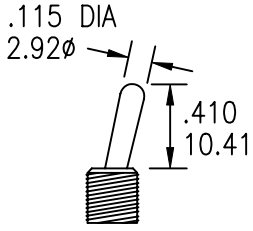
| | | | |
|----------------------|-----------|---------------------------|--------------------------|
| TITLE: TOGGLE SWITCH | | PART NO: SRMT-812X-XXXXXX | |
| DATE: 03/05/01 | DRAWN: RB | CHKD: | SCALE: N/A SHEET: 2 OF 6 |

UNLESS OTHERWISE SPECIFIED, ALL DIMENSIONS ARE IN INCHES [MM].

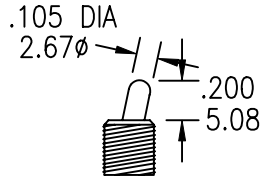
TO 1 DECIMAL PLACE ±.2
 TO 2 DECIMAL PLACES ±.10
 AS ANGLES ±

| ISSUE | DATE |
|-------|----------|
| A | 03/05/01 |
| B | 09/29/04 |
| C | 02/14/08 |

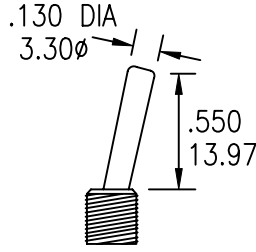
ACTUATOR OPTIONS



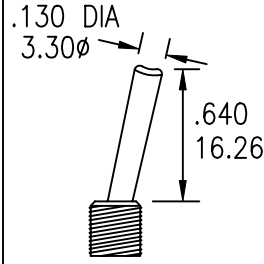
S (STD)



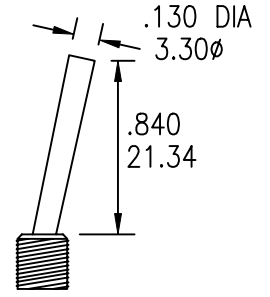
T



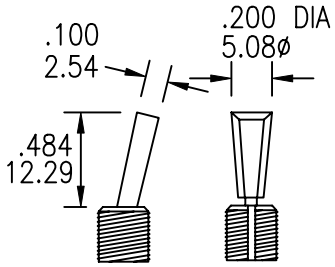
X (LONG)



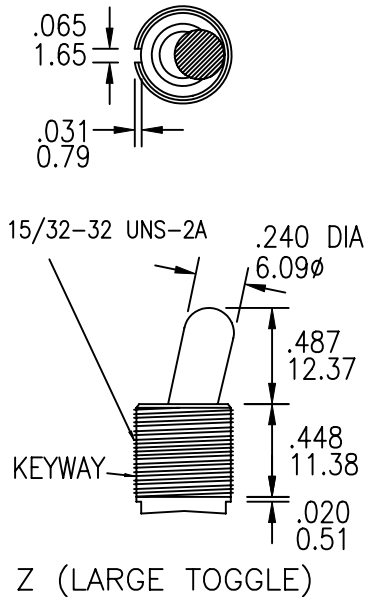
V (LONG)



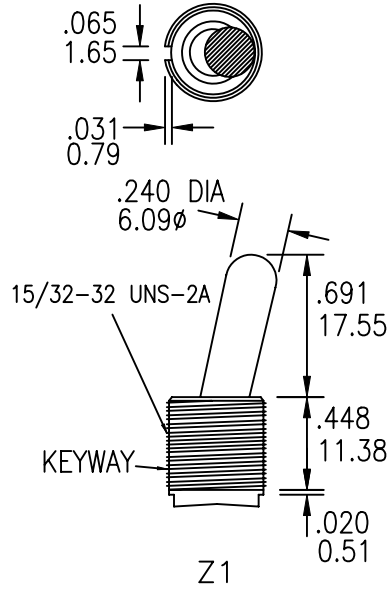
W (LONG)



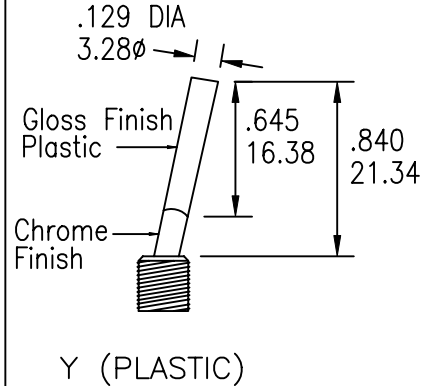
U (FLATTED)



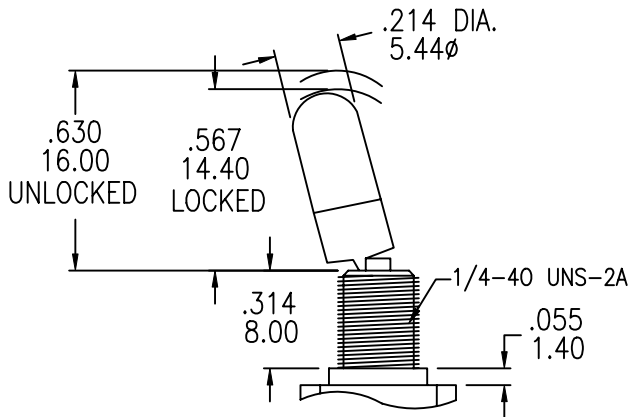
Z (LARGE TOGGLE)



Z1

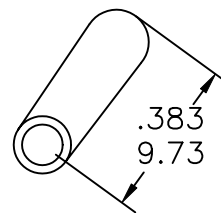


Y (PLASTIC)

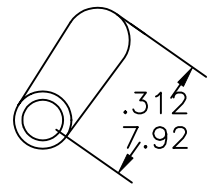


LL1 (LOCKING LEVER)

NOTE: OPTIONAL TOGGLE CAP AVAILABLE.



Used with S STD actuator



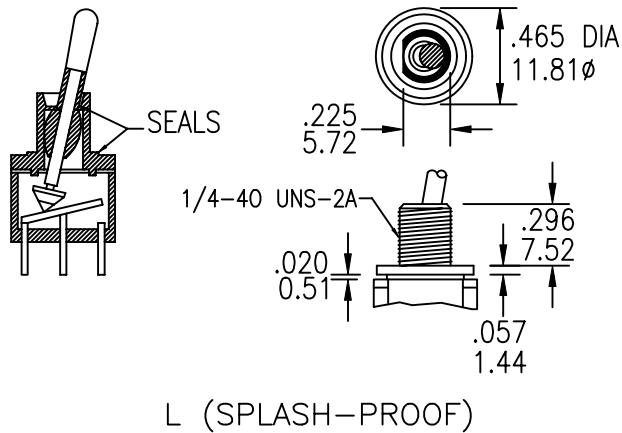
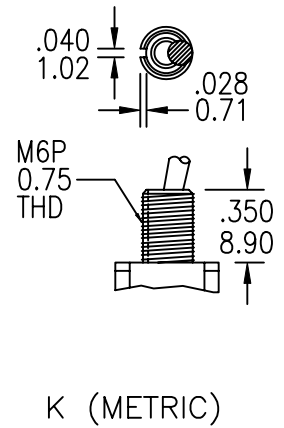
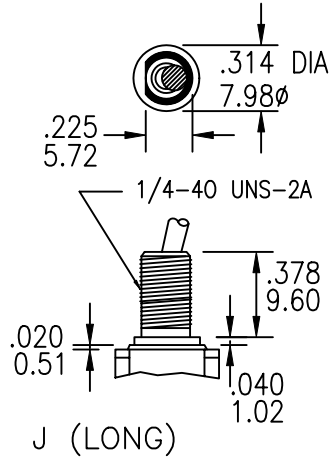
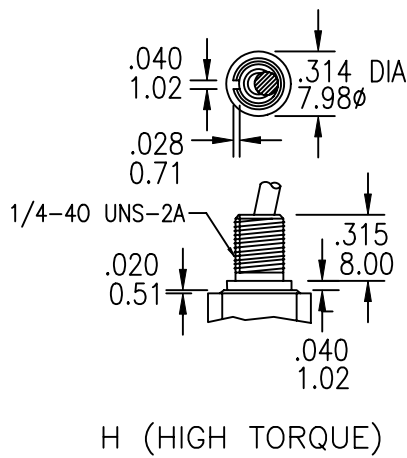
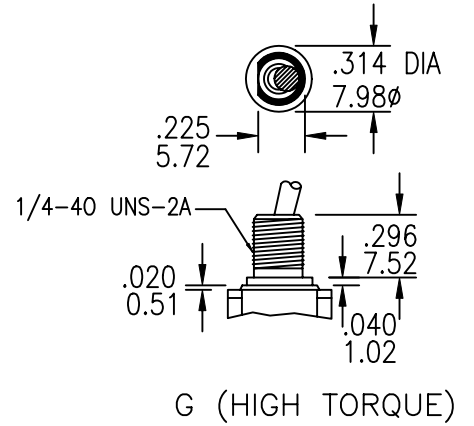
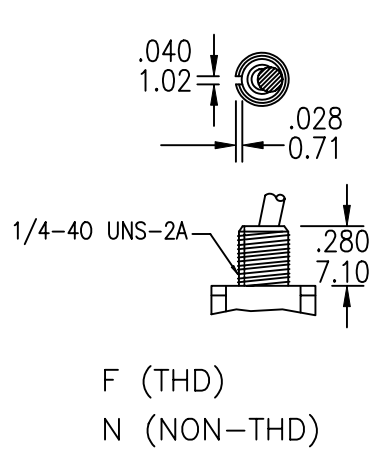
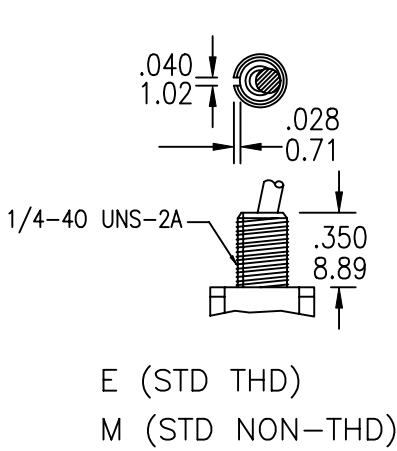
Used with T actuator

UNLESS OTHERWISE SPECIFIED, ALL DIMENSIONS ARE IN INCHES [MM].

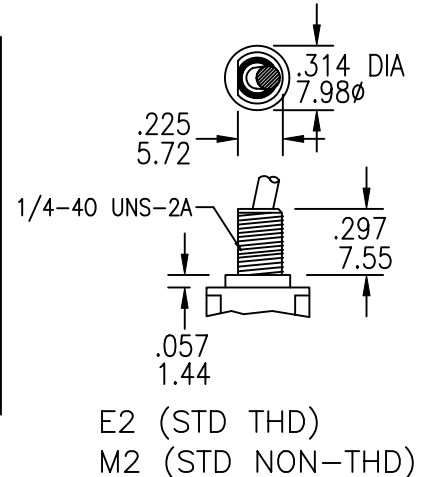
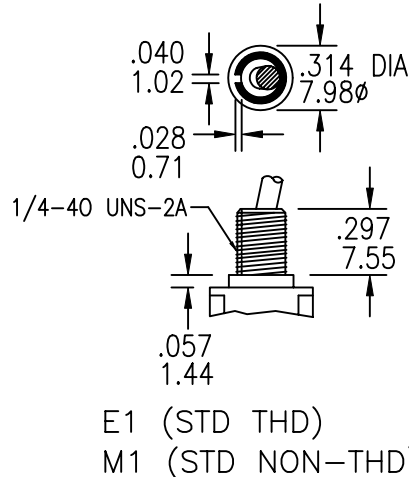
TO 1 DECIMAL PLACE ±.2
 TO 2 DECIMAL PLACES ±.10
 AS ANGLES ±

| ISSUE | DATE |
|-------|----------|
| A | 03/05/01 |
| B | 09/29/04 |
| C | 02/14/08 |

BUSHING OPTIONS



USE WITH 'U' (FLATTED) ACTUATOR ONLY

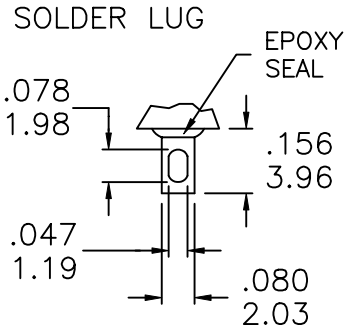


UNLESS OTHERWISE SPECIFIED, ALL DIMENSIONS ARE IN INCHES [MM].

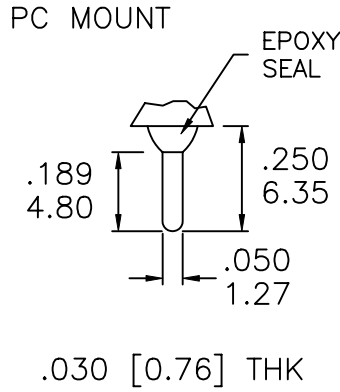
TO 1 DECIMAL PLACE ±.2
 TO 2 DECIMAL PLACES ±.10
 AS ANGLES ±

| ISSUE | DATE |
|-------|----------|
| A | 03/05/01 |
| B | 09/29/04 |
| C | 02/14/08 |

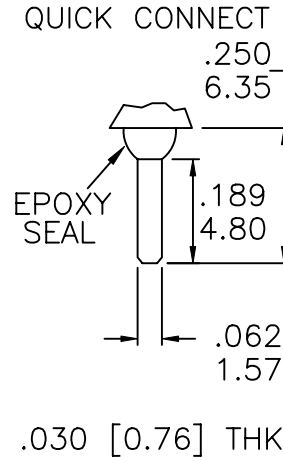
TERMINATION OPTIONS



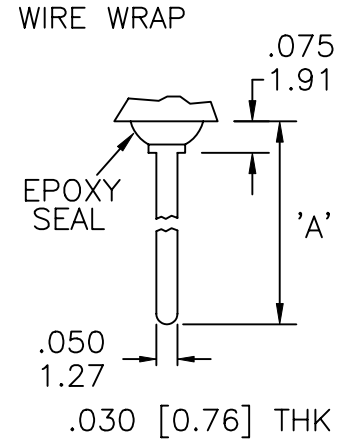
B



C

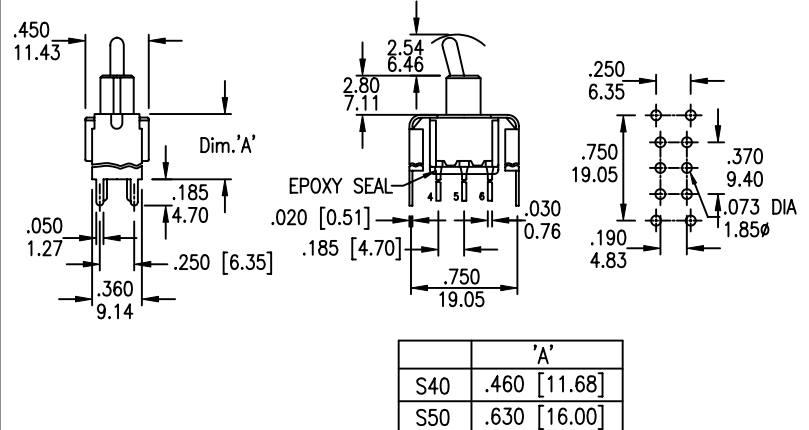
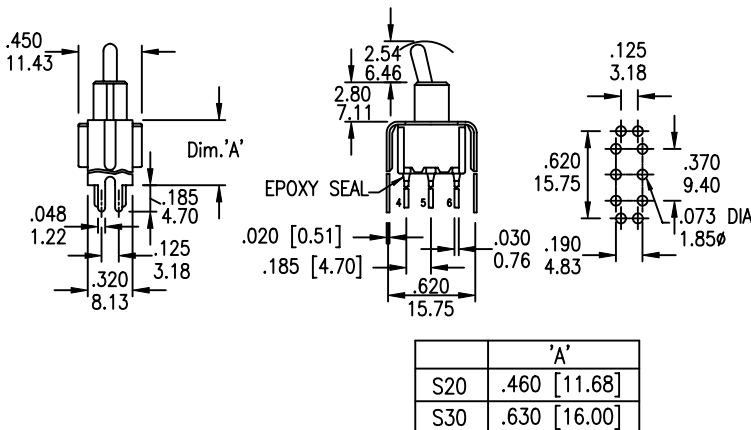


D



| | 'A' |
|----|--------------|
| D1 | .736(18.70) |
| D2 | .953(24.20) |
| D3 | .415(10.54) |
| D4 | 1.062(26.97) |

VERTICAL SUPPORT BRACKET OPTIONS

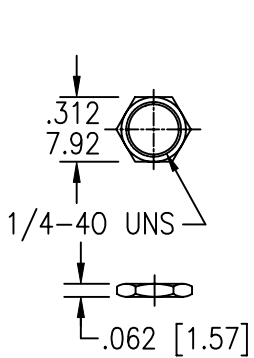


UNLESS OTHERWISE SPECIFIED, ALL DIMENSIONS ARE IN INCHES [MM].

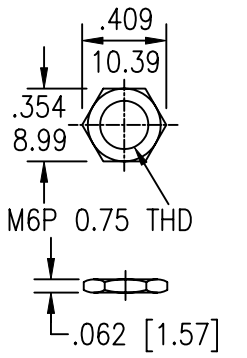
TO 1 DECIMAL PLACE ±.2
 TO 2 DECIMAL PLACES ±.10
 AS ANGLES ±

| ISSUE | DATE |
|-------|----------|
| B | 09/29/04 |
| C | 02/14/08 |

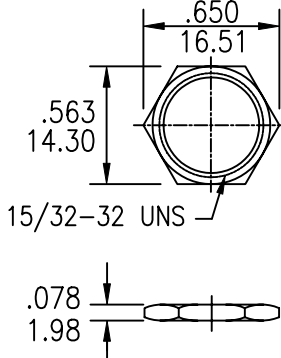
STANDARD NUTS



STD FOR E, F, G, H, AND L OPTIONS

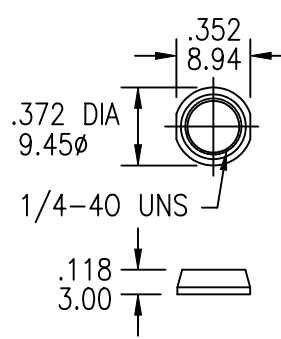


STD FOR K OPTION

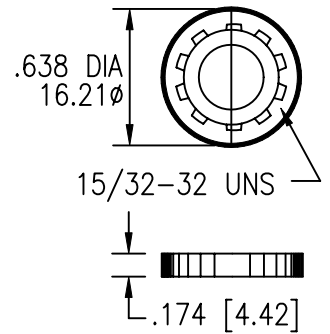


STD FOR Z AND Z1 OPTIONS

OPTIONAL NUTS

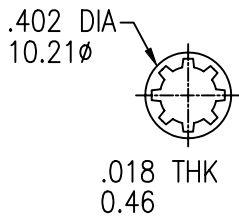


DRESS NUT

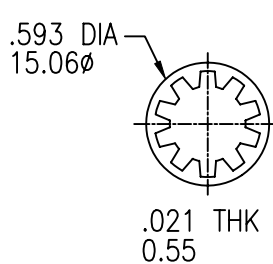


KNURLED

LOCK WASHER

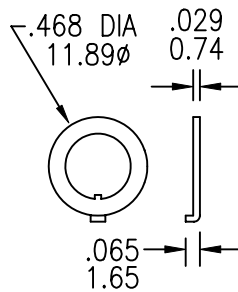


STD FOR E AND F

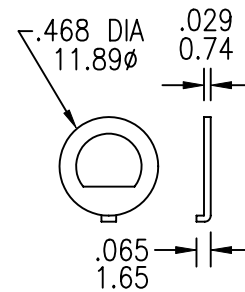


STD FOR Z AND Z1 OPTIONS

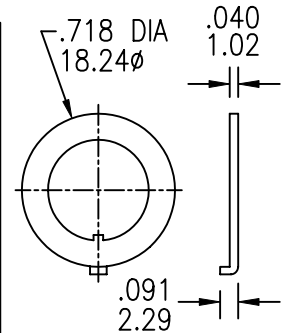
LOCKING RING



STD

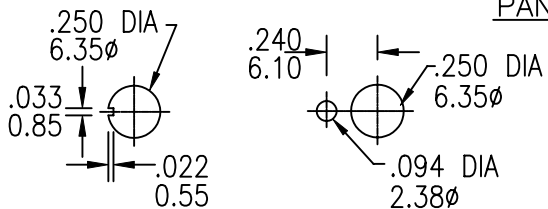


STD FOR G AND J OPTIONS.

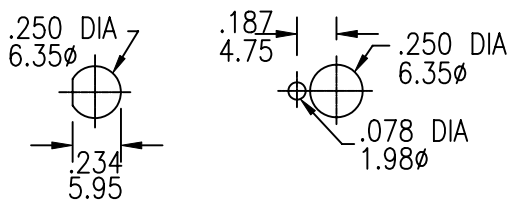


STD FOR Z AND Z1 OPTIONS.

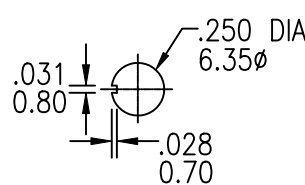
PANEL MOUNTING



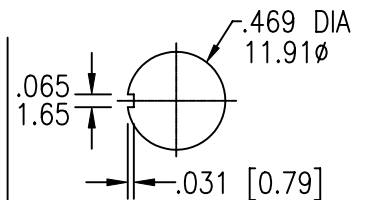
FOR BUSHING E, M, F, N, AND H OPTIONS



FOR BUSHING G, J, AND L OPTIONS



FOR BUSHING K OPTION



FOR ACTUATOR Z AND Z1 OPTIONS