

1

2

3

4

COMPONENT SPECIFICATION

USE OR REPRODUCTION OF THIS DRAWING FOR THE PURPOSE OF MANUFACTURING THIS ARTICLE OR ANY ARTICLES SHOWN FOR ANY PURPOSE IS STRICTLY PROHIBITED WITHOUT WRITTEN PERMISSION FROM SENIOR INDUSTRIES, INC.

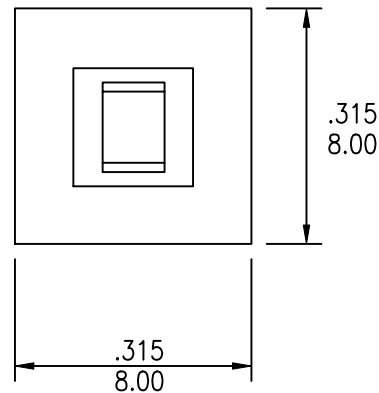
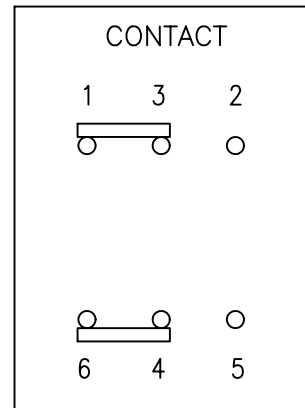
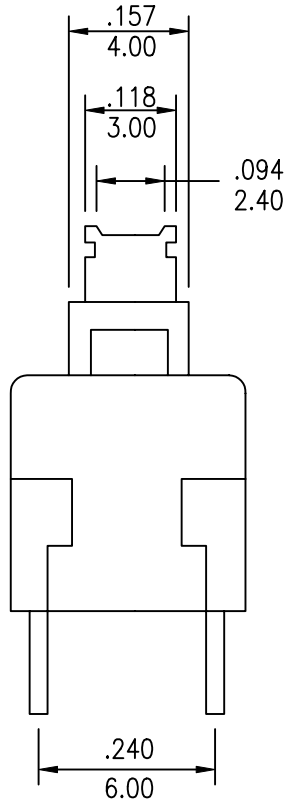
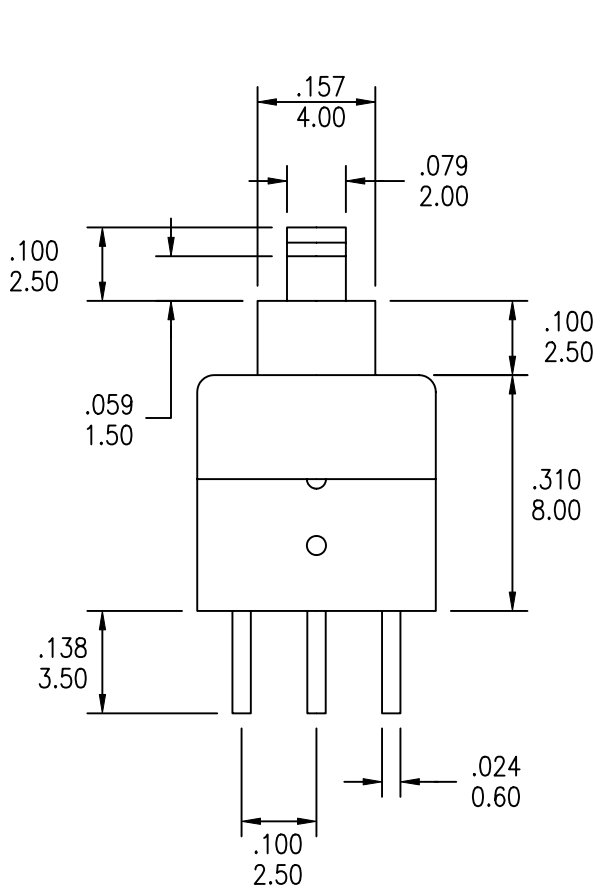
A

B

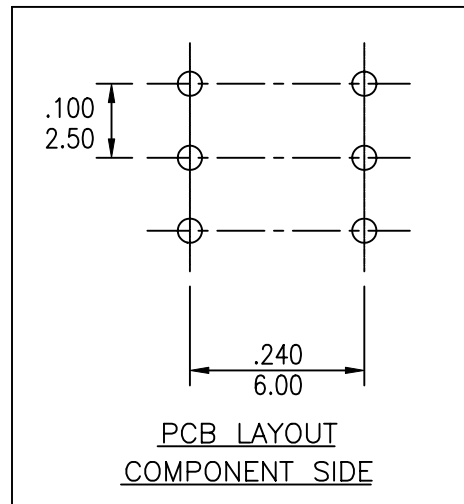
C

D

E



MODEL NO.	SWITCH TYPE
807	NON-LOCK
809	LOCK



DESIGNED:			SYM.	DATE	DESCRIPTION OF REVISIONS	DRAWN	APPD.
DRAWN:	RB	03/05/01	△	03.23.01	NEW	RB	JF
CHECKED:	GAT	11/18/05	△	11.18.05	Actuator travel spec added	GAT	JF
APPROVED:	JF	11/18/05	△	.	.		

3RD ANGLE		UNIT:	IN/mm	SCALE:	2:1	REV.	B
-----------	--	-------	-------	--------	-----	------	---



TOLERANCE:	PART NO:
TO 1 DECIMAL PLACE: ± .2	SEE CHART
TO 2 DECIMAL PLACES: ± .10	TITLE: SRPK 807/809
AS ANGLES:	PUSHBUTTON SWITCH
SHEET:	1 OF 2

1

2

3

4

COMPONENT  
SPECIFICATIONUSE OR REPRODUCTION OF THIS DRAWING FOR THE PURPOSE OF MANUFACTURING THIS  
ARTICLE OR ANY ARTICLES SHOWN FOR ANY PURPOSE IS STRICTLY PROHIBITED WITHOUT  
WRITTEN PERMISSION FROM SENIOR INDUSTRIES, INC.SPECIFICATIONSELECTRICAL

CONTACT RATING: 100 mA @ 30 VDC  
 CONTACT RESISTANCE: 20 MILLIOHMS MAX.  
 INSULATION RESISTANCE: 100 MEGOHMS MIN @ 500 VDC  
 DIELECTRIC STRENGTH: 1,500 VRMS

MECHANICAL

LIFE: 10,000 CYCLES  
 ACTUATOR TRAVEL: UNLOCK : 2.5mm  
 LOCK : 1.5mm

ENVIRONMENTAL

OPERATING TEMPERATURE: -30°C TO +85°C

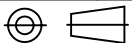
MATERIAL

CASE: GLASS FILLED NYLON  
 ACTUATOR: ABS  
 BASE: PLASTIC, WHITE COLOR  
 SPRING: SPRING STEEL  
 SPRING PLATE: BRASS  
 FIXED ROD: STEEL  
 CONTACTS/TERMINALS: COPPER ALLOY, SILVER PLATED

PART NUMBER BUILDER:

SERIES	MODEL NO.	CAP COLOR
SRPK -	<input type="text"/> <input type="text"/> <input type="text"/> <input type="text"/> <input type="text"/>	- <input type="text"/>
	807	1 - BLUE
	809	2 - RED
		3 - BLACK
		4 - BROWN
		5 - GREEN
		6 - WHITE
		7 - GRAY
		8 - ORANGE
		9 - YELLOW
		0 - VIOLET

DESIGNED:			SYM.	DATE	DESCRIPTION OF REVISIONS	DRAWN	APPD.
DRAWN:	RB	03/05/01	△	03.23.01	NEW	RB	JF
CHECKED:	GAT	11/18/05	△	11.18.05	Actuator travel spec added	GAT	JF
APPROVED:	JF	11/18/05	△	.	.		
			△	.	.		

3RD ANGLE		UNIT:	IN/mm	SCALE:		REV.	B
-----------	---	-------	-------	--------	--	------	---

**SENIOR  
INDUSTRIES, INC.**

TOLERANCE:

TO 1 DECIMAL PLACE: ±

TO 2 DECIMAL PLACES: ±

AS ANGLES:

SHEET:

PART NO:

SEE CHART

TITLE:

SRPK 807/809  
PUSHBUTTON SWITCH

2 OF 2