

1

2

3

4

COMPONENT SPECIFICATION

USE OR REPRODUCTION OF THIS DRAWING FOR THE PURPOSE OF MANUFACTURING THIS ARTICLE OR ANY ARTICLES SHOWN FOR ANY PURPOSE IS STRICTLY PROHIBITED WITHOUT WRITTEN PERMISSION FROM SENIOR INDUSTRIES, INC.

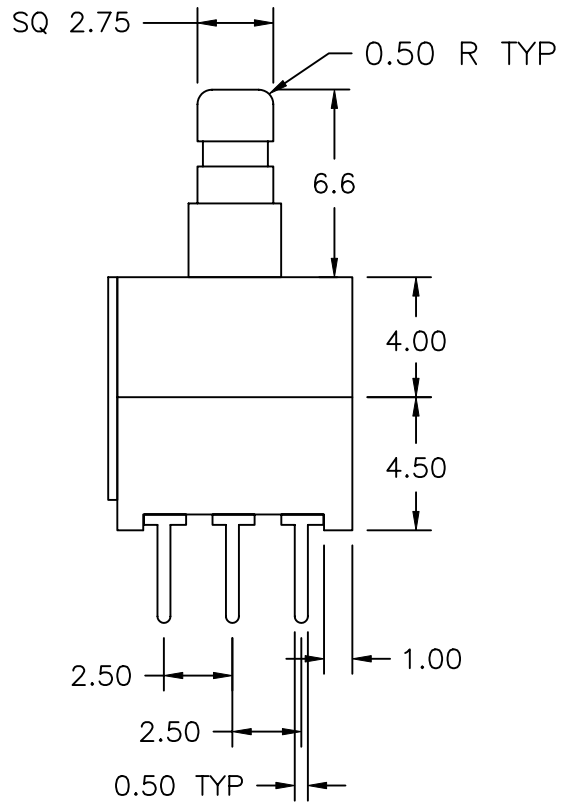
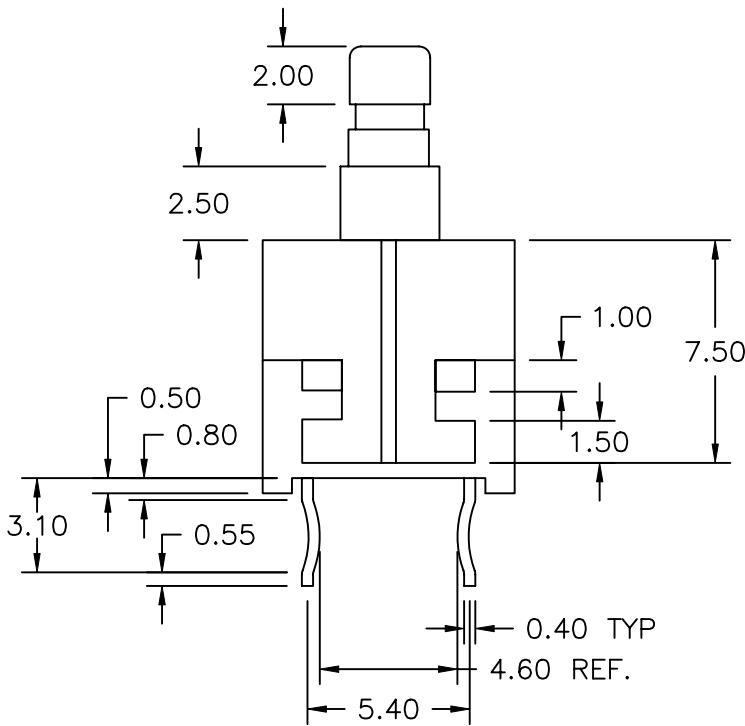
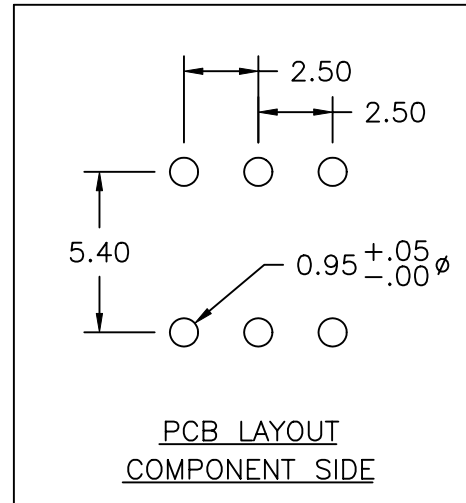
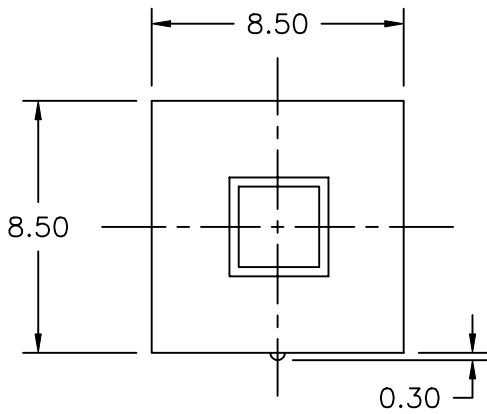
A

B

C

D

E



DESIGNED:			SYM.	DATE	DESCRIPTION OF REVISIONS	DRAWN	APPD.
DRAWN:	HV	07/27/97	△	08.05.97	NEW	TF	JF
CHECKED:	TF	07/28/98	△	06.30.98	Corr spacing fr 5.40 to 5.33, toler to±.20, PCB hole ø fr .90 to .95	JAC	JF
APPROVED:	JF	08/13/98	△	07.28.98	Terminal spacing corr back to 5.40	TF	JF
			△				

3RD ANGLE		UNIT:	mm	SCALE:	2:1	REV.	C
-----------	--	-------	----	--------	-----	------	---



TOLERANCE:	PART NO:	SRPK-811
TO 1 DECIMAL PLACE: ± .3	TITLE:	MOMENTARY PUSHBUTTON SWITCH
TO 2 DECIMAL PLACES: ±.20		
AS ANGLES:		
SHEET:		1 OF 2

COMPONENT
SPECIFICATIONUSE OR REPRODUCTION OF THIS DRAWING FOR THE PURPOSE OF MANUFACTURING THIS
ARTICLE OR ANY ARTICLES SHOWN FOR ANY PURPOSE IS STRICTLY PROHIBITED WITHOUT
WRITTEN PERMISSION FROM SENIOR INDUSTRIES, INC.SPECIFICATIONSELECTRICAL:

CONTACT RATING: 0.3A @ 30 VDC
 TIMING: NON-SHORTING
 CONTACT RESISTANCE: 30 MILLIOHMS MAX. (INITIAL)
 INSULATION RESISTANCE: 100 MEGOHMS MIN @ 500 VDC. 500VDC IS APPLIED
 BETWEEN TERMINALS & BETWEEN TERMINAL & CASE
 FOR 1 MINUTE \pm 5 SEC.
 DIELECTRIC STRENGTH: 500VAC (50-60Hz) IS APPLIED BETWEEN TERMINALS
 & BETWEEN TERMINAL & CASE FOR 1 MINUTE. SHOULD
 BE FREE FROM DIELECTRIC BREAKDOWN.

MECHANICAL:

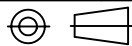
OPERATING MODE: MOMENTARY
 OPERATING FORCE: 300 \pm 100gf
 TERMINAL STRENGTH: A STATIC LOAD OF 500gf IS APPLIED ON THE TIP
 OF TERMINAL IN ARBITRARY DIRECTION FOR 1 MINUTE.
 SHALL BE FREE FROM FALLING-OFF OR BREAKAGE OF
 TERMINAL, AS WELL AS BREAKAGE OF SUBSTRATE. THE
 ELECTRICAL PERFORMANCE REQUIREMENTS SHALL BE MET.
 LEVER DEVIATION: A STATIC LOAD OF 100gf IS APPLIED ON THE TIP
 OF THE OPERATING PARTS, AND MEASUREMENT IS
 MADE OF THE MAX. DEVIATION IN 1mm/METER.

ENDURANCE PROOF:

LIFE TEST: 10,000 CYCLES OPERATED CONTINUOUS UNLOADING
 (15-18 CYCLES PER MIN.)
 a. CONTACT RESISTANCE: 100 MILLIOHMS MAX.
 b. INSULATION RESISTANCE: 100 MEGOHMS MIN.
 c. WITHSTAND VOLTAGE: 250VAC FOR 1 MINUTE
 d. OPERATING FORCE: WITHIN +10%, -30% OF
 SPECIFIED VALUE.

DESIGNED:			SYM.	DATE	DESCRIPTION OF REVISIONS	DRAWN	APPD.
				08.05.97	NEW	TF	JF
DRAWN:	HV	07/27/97		06.30.98	Corr spacing fr 5.40 to 5.33, toler to \pm .20, PCB hole ϕ fr .90 to .95	JAC	JF
CHECKED:	TF	07/28/98		07.28.98	Terminal spacing corr back to 5.40	TF	JF
APPROVED:	JF	08/13/98					

3RD ANGLE



UNIT:

mm

SCALE:

REV.

C


**SENIOR
INDUSTRIES, INC.**

TOLERANCE:

TO 1 DECIMAL PLACE: \pm TO 2 DECIMAL PLACES: \pm

AS ANGLES:

SHEET:

PART NO:

SRPK-811

TITLE:

 MOMENTARY
PUSHBUTTON SWITCH

2 OF 2