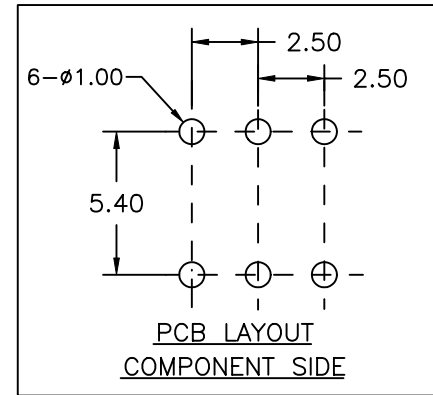
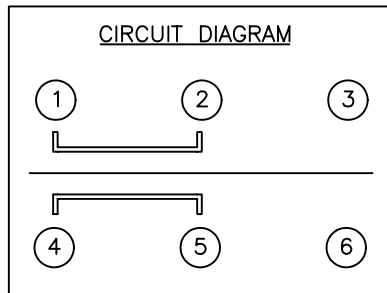
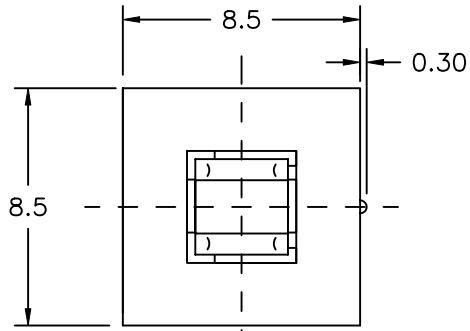


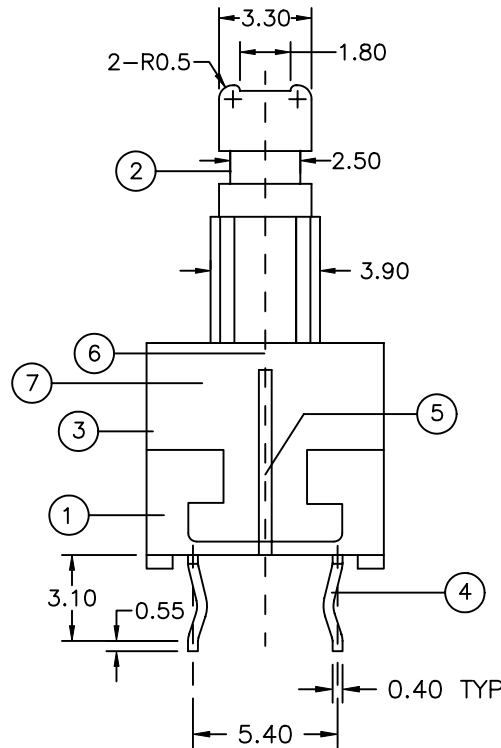
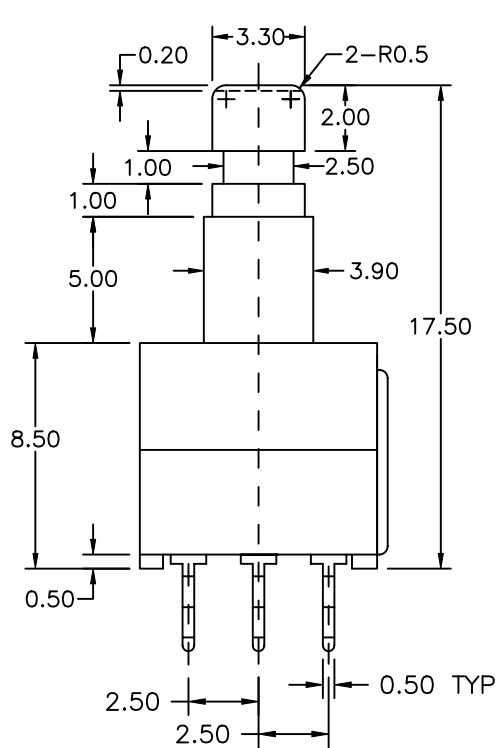
COMPONENT SPECIFICATION

USE OR REPRODUCTION OF THIS DRAWING FOR THE PURPOSE OF MANUFACTURING THIS ARTICLE OR ANY ARTICLES SHOWN FOR ANY PURPOSE IS STRICTLY PROHIBITED WITHOUT WRITTEN PERMISSION FROM SENIOR INDUSTRIES, INC.



NO	DESCRIPTION	QTY	MATERIAL
1	CASE	1	BLACK PBT
2	KNOB	1	ACETAL
3	COVER	1	BLACK ACETAL
4	TERMINAL	6	Ag PLATED BRASS
5	CAM STICK	1	STAINLESS STEEL
6	SPRING	1	STAINLESS STEEL
7	CLIP	2	Ag CLAD PHOSPHOR BRONZE

NOTES:  
 OPERATING FORCE: 300±50gf  
 CIRCUIT: 2C-2P  
 TERMINAL STRENGTH: F=3N  
 STROKE: FULL: 2.5mm  
 LOCK: 1.5mm



DESIGNED:	DRAWN:	CHECKED:	APPROVED:	SYM.	DATE:	DESCRIPTION OF REVISIONS:	DRAWN:	APPD:
	GAT	GAT	JF	▲	07.09.08	NEW	GAT	JF
				▲	. . .			
				▲	. . .			
				▲	. . .			

TOLERANCE:	PART NO:
TO 1 DECIMAL PLACE: ±.3	SRPK-814
TO 2 DECIMAL PLACES: ±.15	TITLE: PUSHBUTTON SWITCH
AS ANGLES: ±1/2°	SHEET: 1 OF 2

3RD ANGLE UNIT: mm SCALE: 6:1 REV. A

1

2

3

4

5

COMPONENT SPECIFICATION

USE OR REPRODUCTION OF THIS DRAWING FOR THE PURPOSE OF MANUFACTURING THIS ARTICLE OR ANY ARTICLES SHOWN FOR ANY PURPOSE IS STRICTLY PROHIBITED WITHOUT WRITTEN PERMISSION FROM SENIOR INDUSTRIES, INC.

SPECIFICATIONS

ELECTRICAL:

CONTACT RATING: 0.1A @ 30V DC  
 TIMING: NON-SHORTING  
 CONTACT RESISTANCE: 100 MILLIOHMS MAX. (INITIAL)  
 CONTACT NOISE: AT 30 MILLIOHMS SETTING, NO CONTACT TO BE FOUND  
 INSULATION RESISTANCE: 100 MEGOHMS MIN @ 500 VDC. 500VDC IS APPLIED BETWEEN TERMINALS & BETWEEN TERMINAL & CASE FOR 1 MINUTE ± 5 SEC.  
 DIELECTRIC STRENGTH: 500V AC (50-60Hz) IS APPLIED BETWEEN TERMINALS & BETWEEN TERMINAL & CASE FOR 1 MINUTE. SHOULD BE FREE FROM DIELECTRIC BREAKDOWN.

MECHANICAL:

OPERATING MODE: LOCKING  
 OPERATING FORCE: 300 ± 50gf  
 OPERATING TEMPERATURE: -40°C TO +85°C

ENDURANCE PROOF:

LIFE TEST: 30,000 CYCLES OPERATED CONTINUOUS WITHOUT LOAD (OPERATION SPEED: 1-2 CYCLE/SEC)  
 a. CONTACT RESISTANCE: 500 MILLIOHMS MAX.  
 b. OPERATION FORCE: WITHIN ±30% OF THE INITIAL FORCE  
 c. DIELECTRIC STRENGTH: NO DIELECTRIC BREAKDOWN SHALL TAKE PLACE WHEN 100V AC IS APPLIED FOR 1 MINUTE  
 DAMP HEAT PROOF: AFTER TESTING AT +40±2°C, 90~95%, for 96h, SAMPLE IS KEPT IN NORMAL CONDITIONS FOR 1 HOUR. MEASUREMENT IS PERFORMED WITHIN 1 HOUR AFTER THAT. a., b. AND c. SPEC SHALL BE MET.  
 DRY HEAT PROOF: AFTER TESTING AT +85±2°C FOR 96h, SAMPLE IS KEPT IN NORMAL CONDITIONS FOR 1 HOUR. MEASUREMENT IS PERFORMED WITHIN 1 HOUR AFTER THAT. a., b. AND c. SPEC SHALL BE MET.  
 COLD PROOF: AFTER TESTING AT -40±2°C FOR 96h, SAMPLE IS KEPT IN NORMAL CONDITIONS FOR 1 HOUR. MEASUREMENT IS PERFORMED WITHIN 1 HOUR AFTER THAT. a., b. AND c. SPEC SHALL BE MET.  
 SOLDERING TEMPERATURE: 260°C FOR 5 SEC

PACKAGING: BULK PACKAGE



**SENIOR INDUSTRIES, INC.**

DESIGNED:			SYM.	DATE:	DESCRIPTION OF REVISIONS:	DRAWN:	APPD:	TOLERANCE:	PART NO:	SRPK-814
DRAWN:	GAT	06/19/08	▲	07.09.08	NEW	GAT	JF			
CHECKED:	GAT	07/09/08	▲	. . .				TO 1 DECIMAL PLACE: ±	TITLE:	PUSHBUTTON SWITCH
APPROVED:	JF	07/09/08	▲	. . .				TO 2 DECIMAL PLACES: ±		
3RD ANGLE		UNIT:	mm	SCALE:		REV.	A	AS ANGLES: ±	SHEET:	2 OF 2