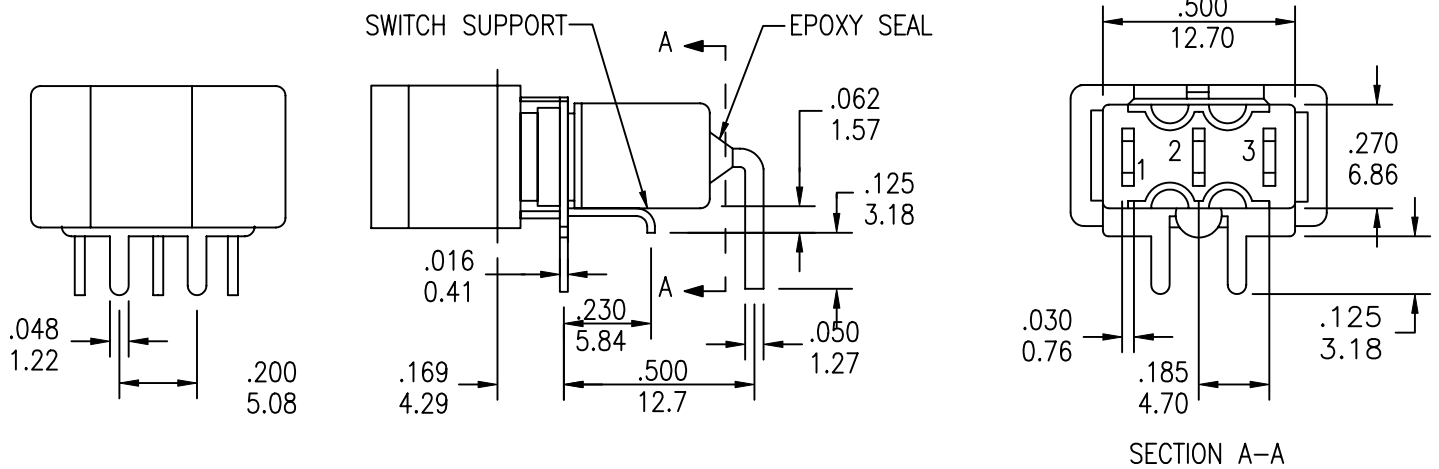


1

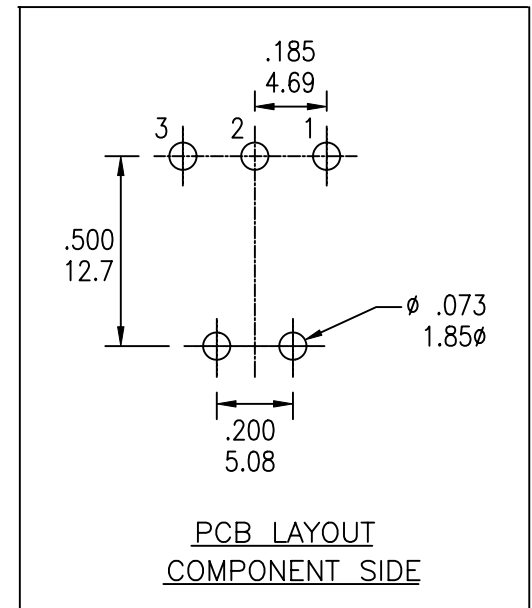
2

3

4

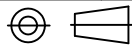
COMPONENT  
SPECIFICATIONUSE OR REPRODUCTION OF THIS DRAWING FOR THE PURPOSE OF MANUFACTURING THIS  
ARTICLE OR ANY ARTICLES SHOWN FOR ANY PURPOSE IS STRICTLY PROHIBITED WITHOUT  
WRITTEN PERMISSION FROM SENIOR INDUSTRIES, INC.

MODEL NO.	SWITCHING POSITION		
8015P	ON	NONE	ON
8015PA	ON	NONE	MOM
8016P	ON	OFF	ON
8016PA	MOM	OFF	MOM
8016PB	ON	OFF	MOM
CONN. TERMS	2-3	OPEN	2-1
SCHEMATIC	SPDT		



DESIGNED:			SYM.	DATE	DESCRIPTION OF REVISIONS	DRAWN	APPD.
				03.15.01	NEW	RB	JF
DRAWN:	RB	03/05/01		03.27.01	Removed the "Non-Shorting type" note from Sheet 1	RB	JF
CHECKED:	TF	03/19/01		07.14.05	New Index, Gen dims updated; 'Comp. Side' added	GAT	JF
APPROVED:	JF	03/19/01					

3RD ANGLE



UNIT:

IN/mm

SCALE:

2:1

REV.

C

TOLERANCE:

TO 1 DECIMAL PLACE:  $\pm .2$ TO 2 DECIMAL PLACES:  $\pm .10$ 

AS ANGLES:

PART NO:

SEE CHART

TITLE: SRPR 8015P/8016P ROCKER/  
PADDLE SWITCHES

SHEET:

1 OF 4

COMPONENT SPECIFICATION

USE OR REPRODUCTION OF THIS DRAWING FOR THE PURPOSE OF MANUFACTURING THIS ARTICLE OR ANY ARTICLES SHOWN FOR ANY PURPOSE IS STRICTLY PROHIBITED WITHOUT WRITTEN PERMISSION FROM SENIOR INDUSTRIES, INC.

SPECIFICATIONS

ELECTRICAL

CONTACT RATING:  
SILVER: 5A @ 120 VAC OR 28 VDC, 2A @ 250 VAC  
GOLD: 0.4 VA MAX. @ 20 V MAX. (AC OR DC)  
CONTACT RESISTANCE: 10 MILLIOHMS MAX.  
INSULATION RESISTANCE: 1,000 MEGOHMS MIN. AT 500 VDC  
DIELECTRIC STRENGTH: 1,000 VRMS

MECHANICAL

LIFE: 50,000 CYCLES

ENVIRONMENTAL

OPERATING TEMPERATURE: -30°C TO +85°C

MATERIAL

CASE: DAP, UL 94V-0  
HOUSING: STAINLESS STEEL  
ACTUATOR: NYLON  
BUSHING: BRASS, NICKEL PLATED  
SUPPORT: BRASS, TIN PLATED  
CONTACT/TERMINALS: COPPER ALLOY, SILVER OR GOLD PLATED

REGULATORY

UL AND CANADA RECOGNIZED COMPONENT. UL/CUL FILE NO. E173084.

PART NUMBER BUILDER:

SERIES	MODEL NO.	ACTUATOR	ACTUATOR COLOR	TERMINATION	CONTACT PLATING	SEAL
SRPR -		-				
	8015P	R11 (ROCKER)	1 - BLUE	C (PC MOUNT)	Q (SILVER)	BLANK
	8015PA	R12 (ROCKER W/BEZEL)	2 - RED		R (GOLD)	E (EPOXY)
	8016P	R15 (LARGE ROCKER)	3 - BLACK (STD)			
	8016PA	P13 (PADDLE)	4 - BROWN			
	8016PB	P14 (PADDLE W/BEZEL)	5 - GREEN			
		P16 (LARGE PADDLE)	6 - WHITE			
			7 - GRAY			
			8 - ORANGE			
			9 - YELLOW			
			0 - VIOLET			

DESIGNED:	DRAWN:	CHECKED:	APPROVED:	SYM.	DATE	DESCRIPTION OF REVISIONS	DRAWN	APPD.
	RB	TF	JF		03.15.01	NEW	RB	JF
					03.27.01	Removed the "Non-Shorting type" note from Sheet 1	RB	JF
					07.14.05	New Index, Gen dims updated; 'Comp. Side' added	GAT	JF
					.	.		

3RD ANGLE		UNIT:	IN/mm	SCALE:		REV.	C
-----------	--	-------	-------	--------	--	------	---



TOLERANCE:	PART NO:
TO 1 DECIMAL PLACE: ±	SEE CHART
TO 2 DECIMAL PLACES: ±	TITLE: SRPR 8015P/8016P ROCKER/PADDLE SWITCHES
AS ANGLES:	
SHEET:	2 OF 4

1

2

3

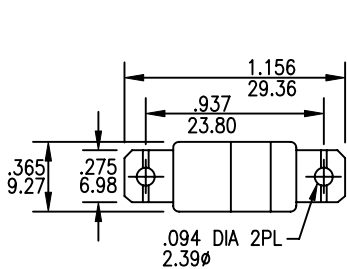
4

COMPONENT SPECIFICATION

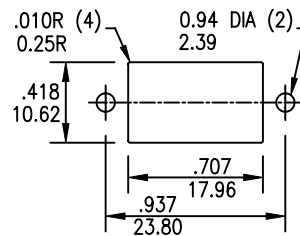
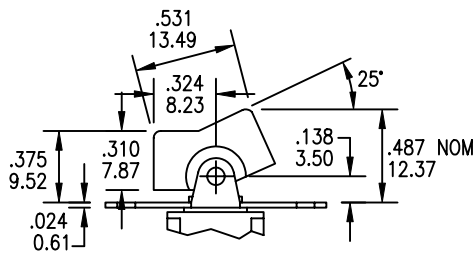
USE OR REPRODUCTION OF THIS DRAWING FOR THE PURPOSE OF MANUFACTURING THIS ARTICLE OR ANY ARTICLES SHOWN FOR ANY PURPOSE IS STRICTLY PROHIBITED WITHOUT WRITTEN PERMISSION FROM SENIOR INDUSTRIES, INC.

A

ACTUATOR OPTIONS

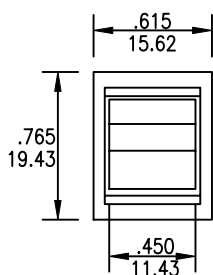


R11

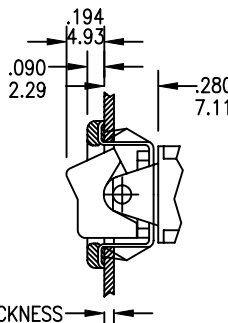


PANEL MOUNTING

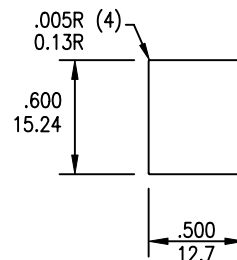
B



R12

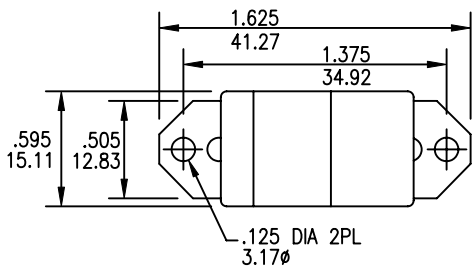


PANEL THICKNESS  
.047 TO .125  
1.19 TO 3.18

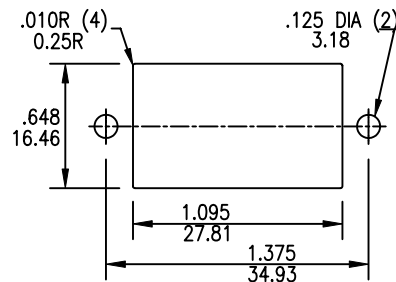
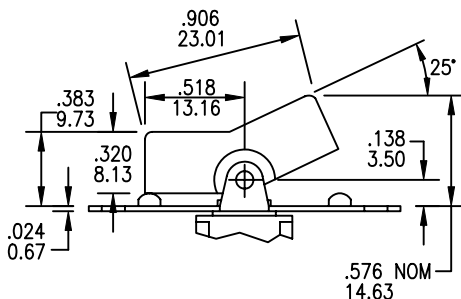


PANEL MOUNTING

C



R15



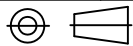
PANEL MOUNTING

D

DESIGNED:			SYM.	DATE	DESCRIPTION OF REVISIONS	DRAWN	APPD.
			▲	03.15.01	NEW	RB	JF
DRAWN:	RB	03/05/01	▲	03.27.01	Removed the "Non-Shorting type" note from Sheet 1	RB	JF
CHECKED:	TF	03/19/01	▲	07.14.05	New Index, Gen dims updated; 'Comp. Side' added	GAT	JF
APPROVED:	JF	03/19/01	▲				

E

3RD ANGLE



UNIT:

IN/mm

SCALE:

REV.

C



SENIOR INDUSTRIES, INC.

TOLERANCE:

TO 1 DECIMAL PLACE:	±.2
TO 2 DECIMAL PLACES:	±.10
AS ANGLES:	

SHEET:

PART NO:

SEE CHART

TITLE:

SRPR 8015P/8016P ROCKER/PADDLE SWITCHES

3 OF 4

1

2

3

4

COMPONENT  
SPECIFICATIONUSE OR REPRODUCTION OF THIS DRAWING FOR THE PURPOSE OF MANUFACTURING THIS  
ARTICLE OR ANY ARTICLES SHOWN FOR ANY PURPOSE IS STRICTLY PROHIBITED WITHOUT  
WRITTEN PERMISSION FROM SENIOR INDUSTRIES, INC.

ACTUATOR OPTIONS

Dimensions for P13 side view:  
 Total length: 1.156 (29.36)  
 Distance from left edge to center: .937 (23.80)  
 Distance from center to right edge: .275 (6.98)  
 Total width: .365 (9.27)  
 Hole diameter: .094 DIA 2PL  
 Mounting hole diameter: 2.39φ

P13

Dimensions for P13 cross-section:  
 Tip angle: 25°  
 Tip thickness: .064 (2.13)  
 Tip radius: .332 (8.43R)  
 Tip height: .740 (18.80)  
 Tip width: .875 (22.22)  
 Tip offset: .024 (0.61)  
 Tip thickness: .138 (3.50)

Dimensions for P13 panel mounting:  
 Hole diameter: .010R (4) 0.25R  
 Mounting hole diameter: 0.94 DIA (2) 2.39  
 Mounting hole offset: .418 (10.62)  
 Mounting hole diameter: .707 (17.96)  
 Mounting hole offset: .937 (23.80)

PANEL MOUNTING

Dimensions for P14 front view:  
 Total width: .615 (15.62)  
 Total height: .765 (19.43)  
 Mounting hole diameter: .450 (11.43)

P14

Dimensions for P14 cross-section:  
 Tip thickness: .544 (13.82)  
 Tip radius: .280 (7.11)  
 Tip offset: .090 (2.29)  
 Tip thickness: .093 (2.36)  
 Panel thickness: .047 TO .125 (1.19 TO 3.18)

Dimensions for P14 panel mounting:  
 Hole diameter: .005R (4) 0.13R  
 Mounting hole diameter: .600 (15.24)  
 Mounting hole offset: .500 (12.7)

PANEL MOUNTING

Dimensions for P16 side view:  
 Total length: 1.625 (41.27)  
 Distance from left edge to center: 1.375 (34.92)  
 Total width: .595 (15.11)  
 Distance from left edge to center: .505 (12.83)  
 Hole diameter: .125 DIA 2PL 3.17φ

P16

Dimensions for P16 cross-section:  
 Tip thickness: .093 (2.36)  
 Tip radius: .529R (13.44R)  
 Tip height: .888 (22.55)  
 Tip width: 1.174 (29.82)  
 Tip offset: 1.312 (33.33)  
 Tip thickness: .437 (11.10)  
 Tip offset: .024 (0.61)  
 Tip thickness: .138 (3.50)

Dimensions for P16 panel mounting:  
 Hole diameter: .010R (4) 0.25R  
 Mounting hole diameter: .125 DIA (2) 3.18  
 Mounting hole offset: .648 (16.46)  
 Mounting hole diameter: 1.095 (27.81)  
 Mounting hole offset: 1.375 (34.93)

PANEL MOUNTING

TERMINATION

Dimensions for termination:  
 Tip thickness: .189 (4.80)  
 Tip height: .250 (6.35)  
 Tip diameter: .050 (1.27)

C (PC MOUNT)

DESIGNED:			SYM.	DATE	DESCRIPTION OF REVISIONS	DRAWN	APPD.
DRAWN:	RB	03/05/01	△	03.15.01	NEW	RB	JF
CHECKED:	TF	03/19/01	△	03.27.01	Removed the "Non-Shorting type" note from Sheet 1	RB	JF
APPROVED:	JF	03/19/01	△	07.14.05	New Index, Gen dims updated; 'Comp. Side' added	GAT	JF
			△				

3RD ANGLE

UNIT:

IN/mm

SCALE:

REV.

C

TOLERANCE:

PART NO:

SEE CHART

TO 1 DECIMAL PLACE: ±.2

TITLE: SRPR 8015P/8016P ROCKER/  
PADDLE SWITCHES

TO 2 DECIMAL PLACES: ±.10

AS ANGLES:

SHEET:

4 OF 4