

1

2

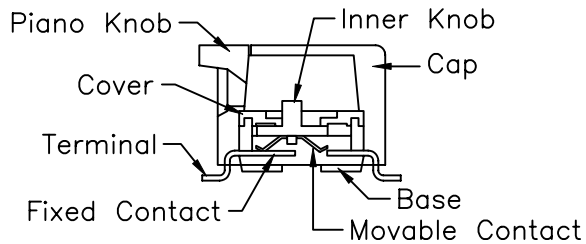
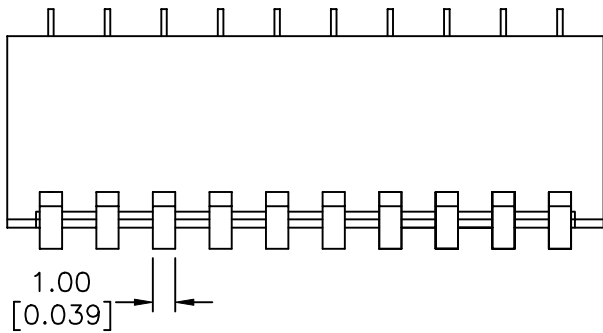
3

4

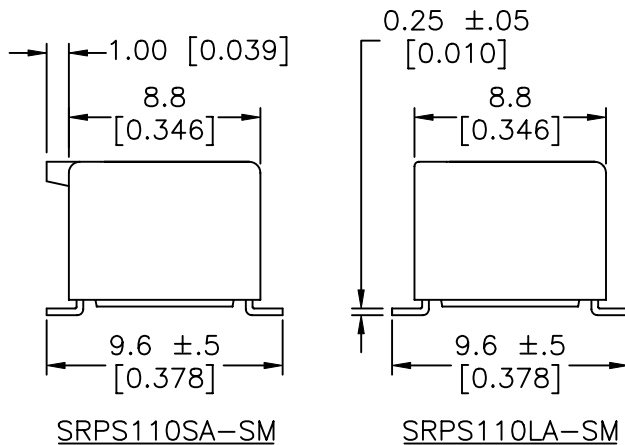
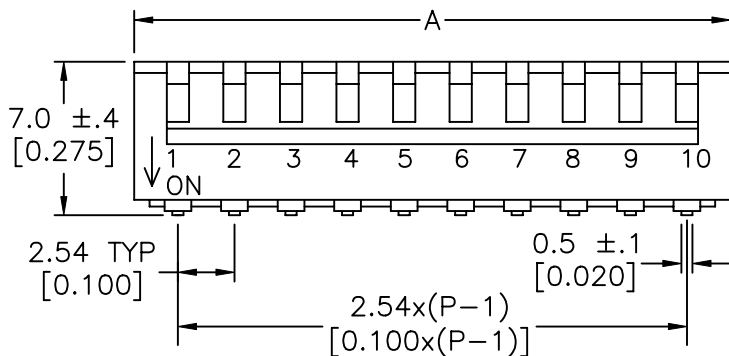
COMPONENT SPECIFICATION

USE OR REPRODUCTION OF THIS DRAWING FOR THE PURPOSE OF MANUFACTURING THIS ARTICLE OR ANY ARTICLES SHOWN FOR ANY PURPOSE IS STRICTLY PROHIBITED WITHOUT WRITTEN PERMISSION FROM SENIOR INDUSTRIES, INC.

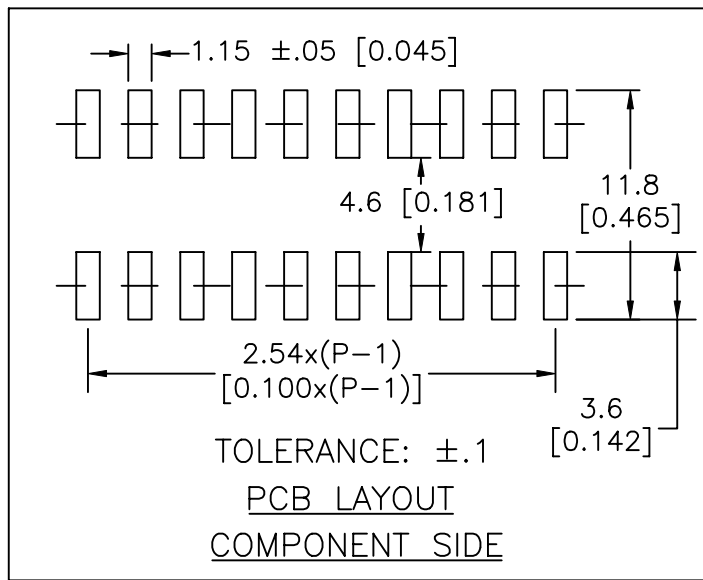
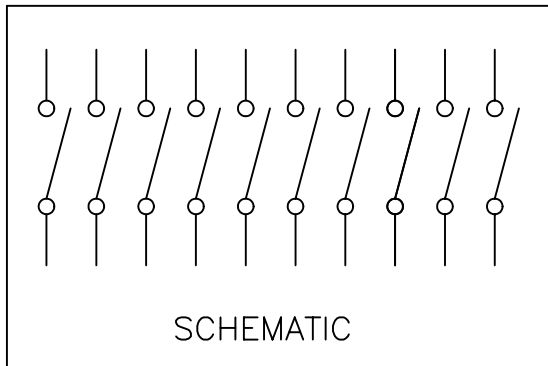
A



B



C



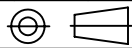
D

POSITIONS	2	3	4	5	6	7	8	9	10	12
DIM "A"	6.5 [0.256]	9.0 [0.354]	11.6 [0.457]	14.1 [0.555]	16.7 [0.657]	19.2 [0.756]	21.7 [0.854]	24.2 [0.953]	26.7 [1.051]	31.9 [1.256]

DESIGNED:			SYM.	DATE	DESCRIPTION OF REVISIONS	DRAWN	APPD.
DRAWN:	GAT	10/12/06	▲	10.12.06	NEW	GAT	JF
CHECKED:	GAT	10/12/06	▲	.	.		
APPROVED:	JF	10/12/06	▲	.	.		

E

3RD ANGLE



UNIT:

mm[IN]

SCALE:

3:1

REV.

A



SENIOR INDUSTRIES, INC.

TOLERANCE:

TO 1 DECIMAL PLACE:	±.3
TO 2 DECIMAL PLACES:	±.2
AS ANGLES:	±1/2°

PART NO:

SRPS1XXX-SM

TITLE:

SMT PIANO DIP SWITCH

SHEET:

1 OF 4

COMPONENT SPECIFICATION

USE OR REPRODUCTION OF THIS DRAWING FOR THE PURPOSE OF MANUFACTURING THIS ARTICLE OR ANY ARTICLES SHOWN FOR ANY PURPOSE IS STRICTLY PROHIBITED WITHOUT WRITTEN PERMISSION FROM SENIOR INDUSTRIES, INC.

SPECIFICATIONS

ELECTRICAL

CIRCUIT TYPE: SPST
CONTACT RATING:
SWITCHING: 25mA @ 24 VDC
NON-SWITCHING: 100mA @ 50 VDC
CONTACT RESISTANCE(INITIAL): 50 MILLIOHMS MAX.
INSULATION RESISTANCE: 1000 MEGOHMS MIN. AT 100 VDC
DIELECTRIC STRENGTH: 500 VDC MIN. FOR 1 MINUTE

MECHANICAL

LIFE: 2000 CYCLES MIN.
OPERATING FORCE: 800g MAX.

ENVIRONMENTAL

OPERATING TEMPERATURE: -25°C TO 70°C
STORAGE TEMPERATURE: -40°C TO +85°C
PART SHALL WITHSTAND REFLOW SOLDERING TEMPERATURE OF 260°C FOR 10 SECONDS.

MATERIAL:

HOUSING: GLASS FILLED POLYESTER, UL94V-0
TERMINALS: PHOSPHOR BRONZE, 0.25t
PLATING: CONTACT AREA - GOLD OVER NICKEL
TERMINATION AREA - TIN OVER NICKEL

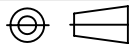
PART NUMBER BUILDER:

MODEL TYPE POSITIONS ACTUATOR SILKSCREEN
SRPS [diagram] [diagram] [diagram] [diagram] - SM
1=SPST 02 03 04 05 S = STANDARD (TOP SIDE 'OFF')
06 ST = STANDARD (TOP SIDE 'OFF'), TOP TAPE SEALED
07 SR = STANDARD (TOP SIDE 'OFF') W/OUT SEALED TOP, TAPE&REEL PACKAGING
08 STR = STANDARD (TOP SIDE 'OFF') WITH TOP TAPE SEALED, TAPE&REEL PACKAGING
09 S1 = STANDARD (TOP SIDE 'ON')
10 ST1 = STANDARD (TOP SIDE 'ON'), TOP TAPE SEALED
12 SR1 = STANDARD (TOP SIDE 'ON') W/OUT SEALED TOP, TAPE&REEL PACKAGING
STR1 = STANDARD (TOP SIDE 'ON') WITH TOP TAPE SEALED, TAPE&REEL PACKAGING
L = FLUSH (TOP SIDE 'OFF')
LT = FLUSH (TOP SIDE 'OFF'), TOP TAPE SEALED
LR = FLUSH (TOP SIDE 'OFF') W/OUT SEALED TOP, TAPE&REEL PACKAGING
LTR = FLUSH (TOP SIDE 'OFF') WITH TOP TAPE SEALED, TAPE&REEL PACKAGING
L1 = FLUSH (TOP SIDE 'ON')
LT1 = FLUSH (TOP SIDE 'ON'), TOP TAPE SEALED
LR1 = FLUSH (TOP SIDE 'ON') W/OUT SEALED TOP, TAPE&REEL PACKAGING
LTR1 = FLUSH (TOP SIDE 'ON') WITH TOP TAPE SEALED, TAPE&REEL PACKAGING

NOTE: 1. CASE IS BLACK WITH WHITE SWITCH ACTUATORS.
2. 03, 09 AND 12 POLES SHALL BE TUBE PACKED ONLY. NO TAPE & REEL

Table with columns: DESIGNED, DRAWN, CHECKED, APPROVED, SYM., DATE, DESCRIPTION OF REVISIONS, DRAWN, APPD.

3RD ANGLE



UNIT:

SCALE:

REV.

A



SENIOR INDUSTRIES, INC.

TOLERANCE:

Table with columns: TO 1 DECIMAL PLACE, TO 2 DECIMAL PLACES, AS ANGLES

PART NO:

SRPS1XXX-SM

TITLE:

SMT PIANO DIP SWITCH

SHEET:

2 OF 4

1

2

3

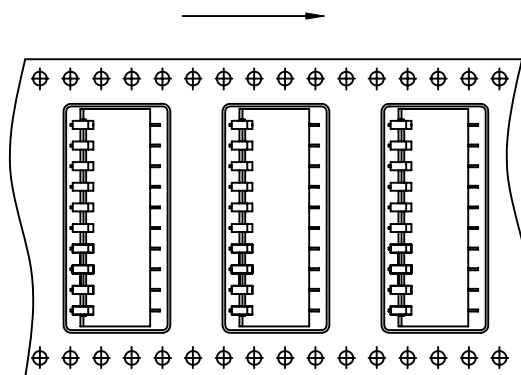
4

COMPONENT
SPECIFICATIONUSE OR REPRODUCTION OF THIS DRAWING FOR THE PURPOSE OF MANUFACTURING THIS
ARTICLE OR ANY ARTICLES SHOWN FOR ANY PURPOSE IS STRICTLY PROHIBITED WITHOUT
WRITTEN PERMISSION FROM SENIOR INDUSTRIES, INC.TAPE AND REEL PACKAGING:

REEL SIZE: 330mm DIA.

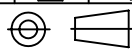
POLE	TAPE WIDTH	TAPE PITCH	NO. OF PCS PER REEL
2P	16mm	16mm	550
4P	24mm	16mm	550
5P	32mm	16mm	550
6P	32mm	16mm	550
7P	32mm	16mm	550
8P	44mm	16mm	550
10P	44mm	16mm	550

DIRECTION OF FEED:



DESIGNED:			SYM.	DATE	DESCRIPTION OF REVISIONS	DRAWN	APPD.
			△	10.12.06	NEW	GAT	JF
DRAWN:	GAT	10/12/06	△	. .			
CHECKED:	GAT	10/12/06	△	. .			
APPROVED:	JF	10/12/06	△	. .			

3RD ANGLE



UNIT:

mm[IN]

SCALE:

3:1

REV.

A

**SENIOR
INDUSTRIES, INC.**

TOLERANCE:

TO 1 DECIMAL PLACE: ±.3

TO 2 DECIMAL PLACES: ±.2

AS ANGLES: ±1/2°

SHEET:

PART NO:

SRPS1XXX-SM

TITLE:

SMT PIANO DIP SWITCH

3 OF 4

1

2

3

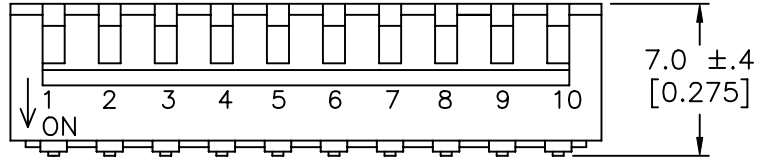
4

COMPONENT SPECIFICATION

USE OR REPRODUCTION OF THIS DRAWING FOR THE PURPOSE OF MANUFACTURING THIS ARTICLE OR ANY ARTICLES SHOWN FOR ANY PURPOSE IS STRICTLY PROHIBITED WITHOUT WRITTEN PERMISSION FROM SENIOR INDUSTRIES, INC.

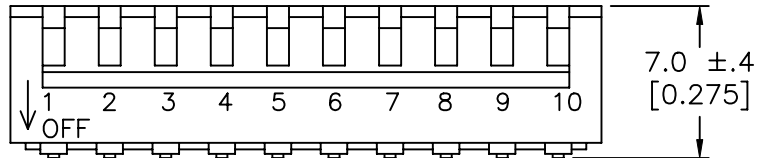
A

SILKSCREEN OPTIONS



B

A (TOP SIDE 'OFF')



C

B (TOP SIDE 'ON')

D

E

DESIGNED:			SYM.	DATE	DESCRIPTION OF REVISIONS	DRAWN	APPD.
DRAWN:	GAT	10/12/06	▲	10.12.06	NEW	GAT	JF
CHECKED:	GAT	10/12/06	▲	. . .			
APPROVED:	JF	10/12/06	▲	. . .			

3RD ANGLE		UNIT:	mm[IN]	SCALE:	3:1	REV.	A
-----------	--	-------	--------	--------	-----	------	---



TOLERANCE:	PART NO:	SRPS1XXX-SM
TO 1 DECIMAL PLACE: ±.3	TITLE:	SMT PIANO DIP SWITCH
TO 2 DECIMAL PLACES: ±.2		
AS ANGLES: ±1/2°		
SHEET:		4 OF 4