

COMPONENT SPECIFICATION

USE OR REPRODUCTION OF THIS DRAWING FOR THE PURPOSE OF MANUFACTURING THIS ARTICLE OR ANY ARTICLES SHOWN FOR ANY PURPOSE IS STRICTLY PROHIBITED WITHOUT WRITTEN PERMISSION FROM SENIOR INDUSTRIES, INC.

SPECIFICATIONS

ELECTRICAL

CONTACT RATING:

SILVER: 3A @ 120 VAC OR 28 VDC, 1A @ 250 VAC

GOLD: 0.4 VA MAX. @ 20 V MAX. (AC OR DC)

CONTACT RESISTANCE: 20 MILLIOHMS MAX.

INSULATION RESISTANCE: 1,000 MEGOHMS MIN. AT 500 VDC

DIELECTRIC STRENGTH: 1,000 VRMS

MECHANICAL

OPERATING LIFE: 30,000 CYCLES

OPERATING FORCE: 200g ±50g

ENVIRONMENTAL

OPERATING TEMPERATURE: -30°C TO +85°C

MATERIAL

CASE: DAP, UL 94V-0

HOUSING: STAINLESS STEEL

ACTUATOR: NYLON

BUSHING: BRASS, NICKEL PLATED

SUPPORT: BRASS, TIN PLATED

CONTACT/TERMINALS: COPPER ALLOY, SILVER OR GOLD PLATED

REGULATORY

UL AND CANADA RECOGNIZED COMPONENT. UL FILE NO. E173084.

PART NUMBER BUILDER:

SERIES	MODEL NO.	ACTUATOR COLOR	TERMINATION	CONTACT PLATING	SEAL	VERTICAL SUPPORT BRACKET
SRSR -	<input type="text"/>	<input type="text"/>	<input type="text"/>	<input type="text"/>	<input type="text"/>	<input type="text"/>
	RS4 RS4A RS4B RS4C RS4D RS4E	1 - BLUE 2 - RED 3 - BLACK 4 - BROWN 5 - GREEN 6 - WHITE 7 - GRAY 8 - ORANGE 9 - YELLOW 0 - VIOLET	B (SOLDER LUG) C (PC MOUNT)	Q (SILVER) R (GOLD)	BLANK E (EPOXY)	BLANK A5 A6

DESIGNED:	DRAWN:	CHECKED:	APPROVED:	SYM.	DATE	DESCRIPTION OF REVISIONS	DRAWN	APPD.
	RB	GAT	JF	△	03.19.01	NEW	RB	JF
				△	09.19.05	Operating Force added at 200g ±50g. New Index	GAT	JF
				△	05.21.07	Option A6 bracket, remv'd DP termination option	GAT	JF
				△	10.07.08	Added RS4A->E switch positions	GAT	JF

3RD ANGLE		UNIT:	IN[mm]	SCALE:		REV.	D
-----------	--	-------	--------	--------	--	------	---

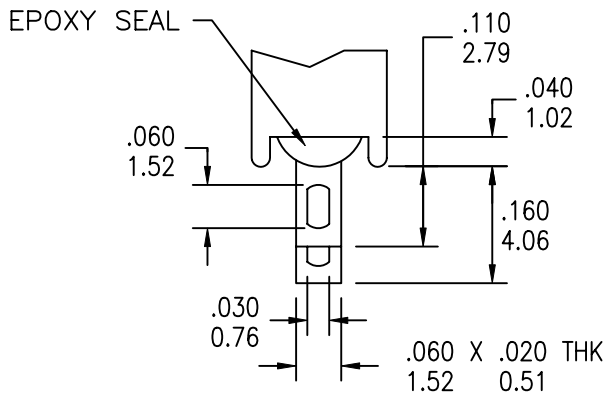


TOLERANCE:	PART NO:
TO 1 DECIMAL PLACE: ± .2	SRSR-RS4X-XXXXX
TO 2 DECIMAL PLACES: ± .10	TITLE:
AS ANGLES:	ROCKER SWITCH
SHEET:	2 OF 4

COMPONENT SPECIFICATION

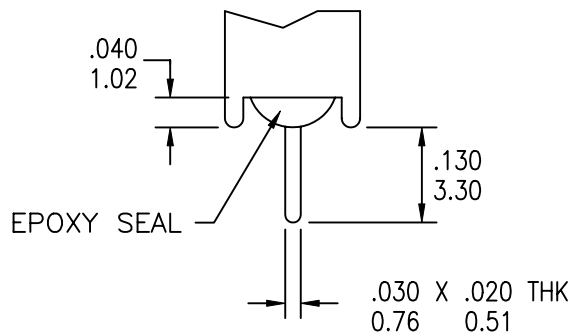
USE OR REPRODUCTION OF THIS DRAWING FOR THE PURPOSE OF MANUFACTURING THIS ARTICLE OR ANY ARTICLES SHOWN FOR ANY PURPOSE IS STRICTLY PROHIBITED WITHOUT WRITTEN PERMISSION FROM SENIOR INDUSTRIES, INC.

TERMINATION OPTIONS



SINGLE POLE

B (SOLDER LUG)

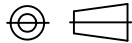


SINGLE POLE

C (PC MOUNT)

DESIGNED:			SYM.	DATE	DESCRIPTION OF REVISIONS	DRAWN	APPD.
			▲	03.19.01	NEW	RB	JF
DRAWN:	RB	03/05/01	▲	09.19.05	Operating Force added at 200g ±50g. New Index	GAT	JF
CHECKED:	GAT	10/07/08	▲	05.21.07	Option A6 bracket, remv'd DP termination option	GAT	JF
APPROVED:	JF	10/07/08	▲	10.07.08	Added RS4A->E switch positions	GAT	JF

3RD ANGLE



UNIT:

IN[mm]

SCALE:

REV.

D



SENIOR INDUSTRIES, INC.

TOLERANCE:

TO 1 DECIMAL PLACE: ± .2

TO 2 DECIMAL PLACES: ± .10

AS ANGLES:

SHEET:

PART NO:

SRSR-RS4X-XXXXX

TITLE:

ROCKER SWITCH

3 OF 4

1

2

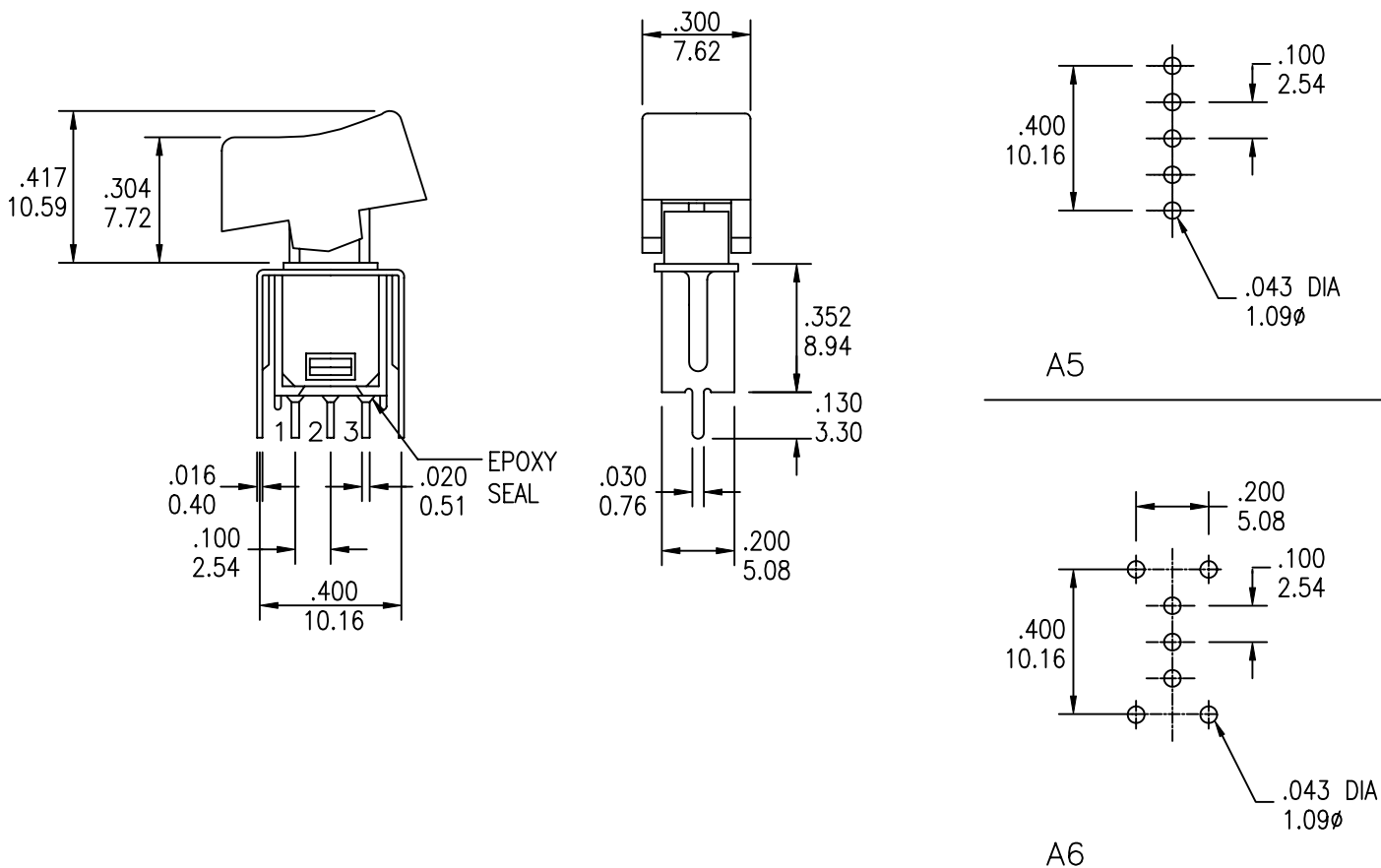
3

4

COMPONENT SPECIFICATION

USE OR REPRODUCTION OF THIS DRAWING FOR THE PURPOSE OF MANUFACTURING THIS ARTICLE OR ANY ARTICLES SHOWN FOR ANY PURPOSE IS STRICTLY PROHIBITED WITHOUT WRITTEN PERMISSION FROM SENIOR INDUSTRIES, INC.

VERTICAL SUPPORT BRACKET



DESIGNED:			SYM.	DATE	DESCRIPTION OF REVISIONS	DRAWN	APPD.
			△	03.19.01	NEW	RB	JF
DRAWN:	RB	03/05/01	△	09.19.05	Operating Force added at 200g ±50g. New Index	GAT	JF
CHECKED:	GAT	10/07/08	△	05.21.07	Option A6 bracket, remv'd DP termination option	GAT	JF
APPROVED:	JF	10/07/08	△	10.07.08	Added RS4A->E switch positions	GAT	JF

3RD ANGLE		UNIT:	IN[mm]	SCALE:		REV.	D
-----------	--	-------	--------	--------	--	------	---



TOLERANCE:	PART NO:	SRSR-RS4X-XXXXX
TO 1 DECIMAL PLACE: ± .2	TITLE:	ROCKER SWITCH
TO 2 DECIMAL PLACES: ± .10		
AS ANGLES:		
SHEET:		4 OF 4