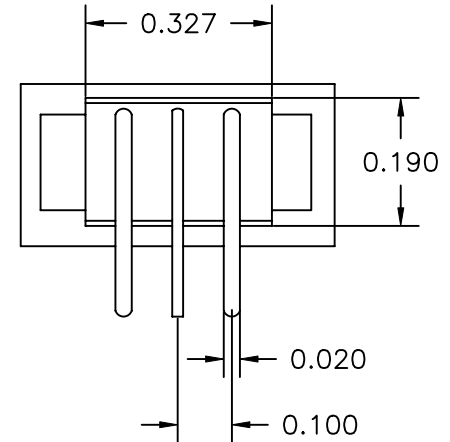
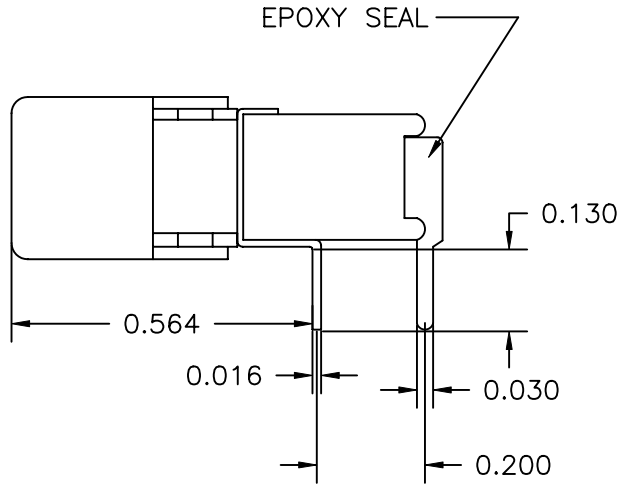
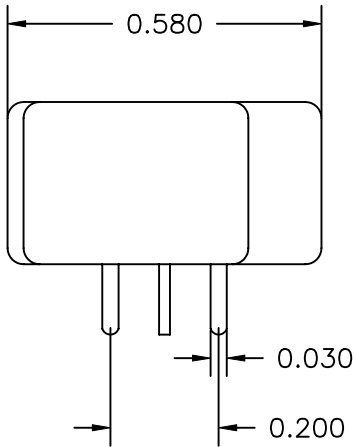


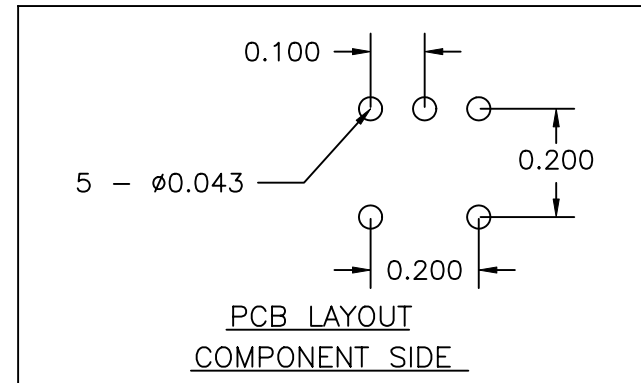
COMPONENT SPECIFICATION

USE OR REPRODUCTION OF THIS DRAWING FOR THE PURPOSE OF MANUFACTURING THIS ARTICLE OR ANY ARTICLES SHOWN FOR ANY PURPOSE IS STRICTLY PROHIBITED WITHOUT WRITTEN PERMISSION FROM SENIOR INDUSTRIES, INC.



MODEL NO.	SWITCHING POSITION		
RS6	ON	NONE	ON
CONN. TERMS	2-3	OPEN	2-1
SCHEMATIC	SPDT		

NON-SHORTING TYPE



SENIOR INDUSTRIES, INC.

DESIGNED:	DATE:	SYM.	DATE:	DESCRIPTION OF REVISIONS:	DRAWN:	APPD:
	05/05/00	▲	05.22.00	NEW	RB	TF
DRAWN:	RB	▲	12.03.04	Switch pos chart, Schem., PCB Side, New Contact Rate	GAT	JF
CHECKED:	GAT	▲	09.19.05	Operating Force: 200g ±50g	GAT	JF
APPROVED:	JF	▲	.	.		

TOLERANCE:	PART NO:
TO 2 DECIMAL PLACE: ±.01	SRSR-RS6-XXXX
TO 3 DECIMAL PLACES: ±.010	TITLE: ROCKER SWITCH
AS ANGLES: ±1/2°	SHEET: 1 OF 2

3RD ANGLE		UNIT: inches	SCALE: 3:1	REV. C
-----------	--	--------------	------------	--------

1

2

3

4

5

COMPONENT SPECIFICATION

USE OR REPRODUCTION OF THIS DRAWING FOR THE PURPOSE OF MANUFACTURING THIS ARTICLE OR ANY ARTICLES SHOWN FOR ANY PURPOSE IS STRICTLY PROHIBITED WITHOUT WRITTEN PERMISSION FROM SENIOR INDUSTRIES, INC.

SPECIFICATIONS

ELECTRICAL

CONTACT RATING:

SILVER: 3A AT 120VAC OR 28VDC, 1A AT 250VAC

GOLD: 0.4VA MAX. AT 20VAC OR VDC MAX.

CONTACT RESISTANCE: 10 MILLIOHMS MAX.

INSULATION RESISTANCE: 1000 MEGOHMS MIN. AT 500 VDC

DIELECTRIC STRENGTH: 1000 VRMS FOR ONE MINUTE MIN.

MECHANICAL

OPERATING LIFE: 50,000 CYCLES UNDER LOAD

OPERATING FORCE: 200g ±50g

SOLDERABILITY: TESTED PER TP1101 AT 245° ±5°C FOR 5±1 SECONDS WITH 95% WETTING

MATERIAL

HOUSING: GLASS FILLED NYLON 6/6, UL94V-0

ACTUATOR: NYLON, UL94V-0.

FRAME: STAINLESS STEEL

BUSHING: BRASS, NICKEL PLATED

CONTACT: SILVER OR GOLD PLATED

TERMINAL: BRASS, SILVER OR GOLD PLATED

MOUNTING TABS: BRASS, TIN PLATED

REGULATORY

UL AND CANADA RECOGNIZED COMPONENT. UL FILE NO. E173084.

ENVIRONMENTAL

OPERATING TEMPERATURE: -30°C TO 85°C

NOTES

FIRST 'X' DENOTES ACTUATOR COLOR

SECOND 'X' DENOTES TERMINATION: C= PC TERMINALS

THIRD 'X' DENOTES CONTACT OPTIONS: Q= SILVER, R= GOLD

FOURTH 'X' DENOTES TERMINAL SEAL: BLANK= NONE, B1= EPOXY SEALED



SENIOR INDUSTRIES, INC.

DESIGNED:			SYM.	DATE:	DESCRIPTION OF REVISIONS:	DRAWN:	APPD:	TOLERANCE:	PART NO:	SRSR-RS6-XXXX
DRAWN:	RB	05/05/00	▲	05.22.00	NEW	RB	TF			
CHECKED:	GAT	09/19/05	▲	12.03.04	Switch pos chart,Schem.,PCB Side,NewContactRate	GAT	JF	TO 2 DECIMAL PLACE: ±	TITLE:	ROCKER SWITCH
APPROVED:	JF	09/19/05	▲	09.19.05	Operating Force: 200g ±50g	GAT	JF			
3RD ANGLE		UNIT:	inches	SCALE:		REV.	C	AS ANGLES: ±	SHEET:	2 OF 2