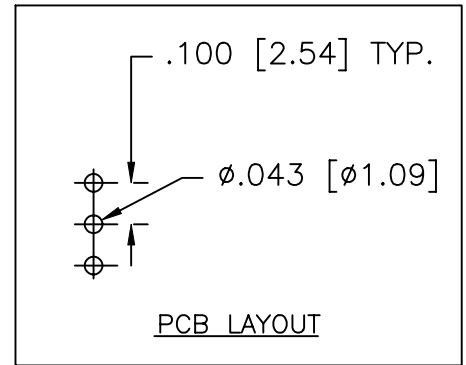
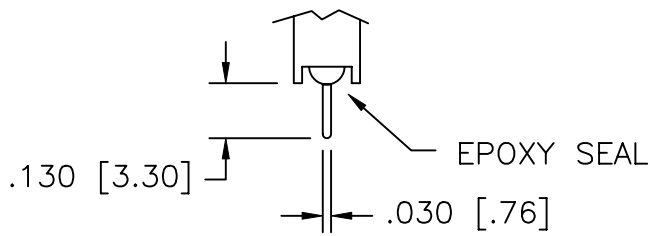
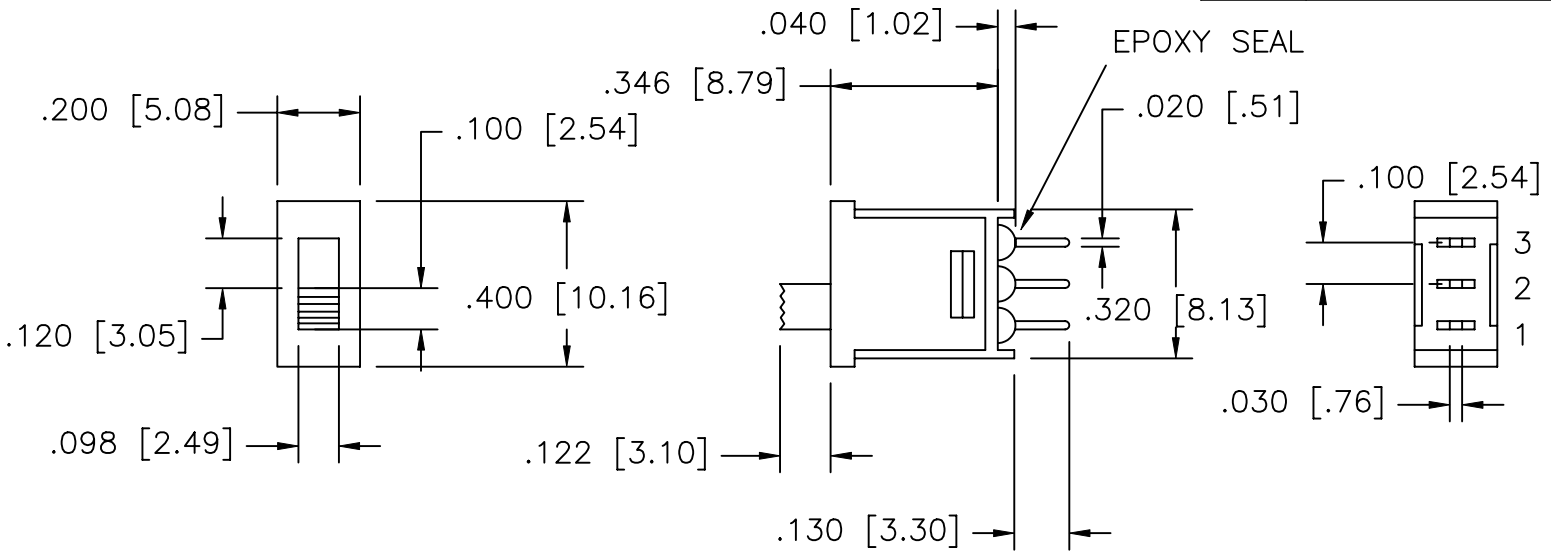


UNLESS OTHERWISE SPECIFIED, ALL DIMENSIONS ARE IN INCHES [MM].

TO 1 DECIMAL PLACE ±.2  
 TO 2 DECIMAL PLACES ±.10  
 AS ANGLES ±

ISSUE	DATE
A	2/18/00
B	08/28/03



MODEL NO.	SWITCHING FUNCTION		
251A	ON	NONE	ON
251B	ON	OFF	ON
CONN. TERMS	2-1	OPEN	2-3
SCHEMATIC	SPDT  2 Comm. 1      3		

NON-SHORTING TYPE



TITLE: SLIDE SWITCH		PART NO: SRSS-251X-XX	
DATE: 1/23/00	DRAWN: TSF	CHKD:	SCALE: 2/1 SHEET: 1 OF 2

UNLESS OTHERWISE SPECIFIED, ALL DIMENSIONS ARE IN INCHES [MM].

TO 1 DECIMAL PLACE ±.2  
 TO 2 DECIMAL PLACES ±.10  
 AS ANGLES ±

ISSUE	DATE
A	2/18/00
B	08/28/03

SPECIFICATIONS

ELECTRICAL

CONTACT RATING:

SILVER: 3A @ 120 VAC OR 28 VDC, 1A @ 250 VAC  
 GOLD: 0.4 VA MAX. @ 20 V MAX. (AC OR DC)

CONTACT RESISTANCE: 10 MILLIOHMS MAX.

INSULATION RESISTANCE: 1,000 MEGOHMS MIN. AT 500 VDC

DIELECTRIC STRENGTH: 1,000 VRMS

MECHANICAL

LIFE: 30,000 CYCLES

ENVIRONMENTAL

OPERATING TEMPERATURE: -30°C TO +85°C

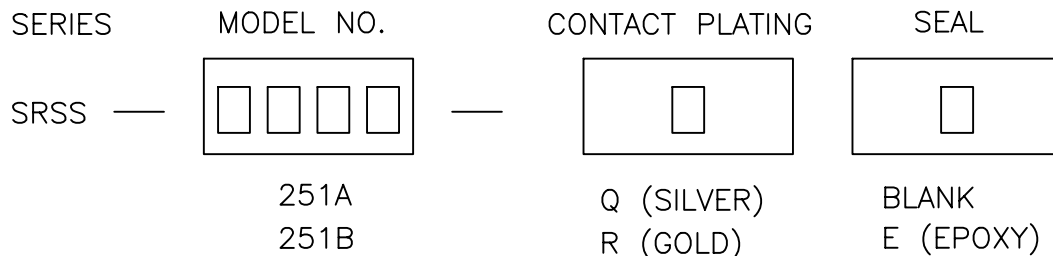
MATERIAL

CASE: DAP, UL94V-0

HOUSING: STAINLESS STEEL

ACTUATOR: NYLON

CONTACTS/TERMINALS: COPPER ALLOY, SILVER OR GOLD PLATED



TITLE: SLIDE SWITCH		PART NO: SRSS-251X-XX	
DATE: 1/23/00	DRAWN: TSF	CHKD:	SCALE: N/A SHEET: 2 OF 2