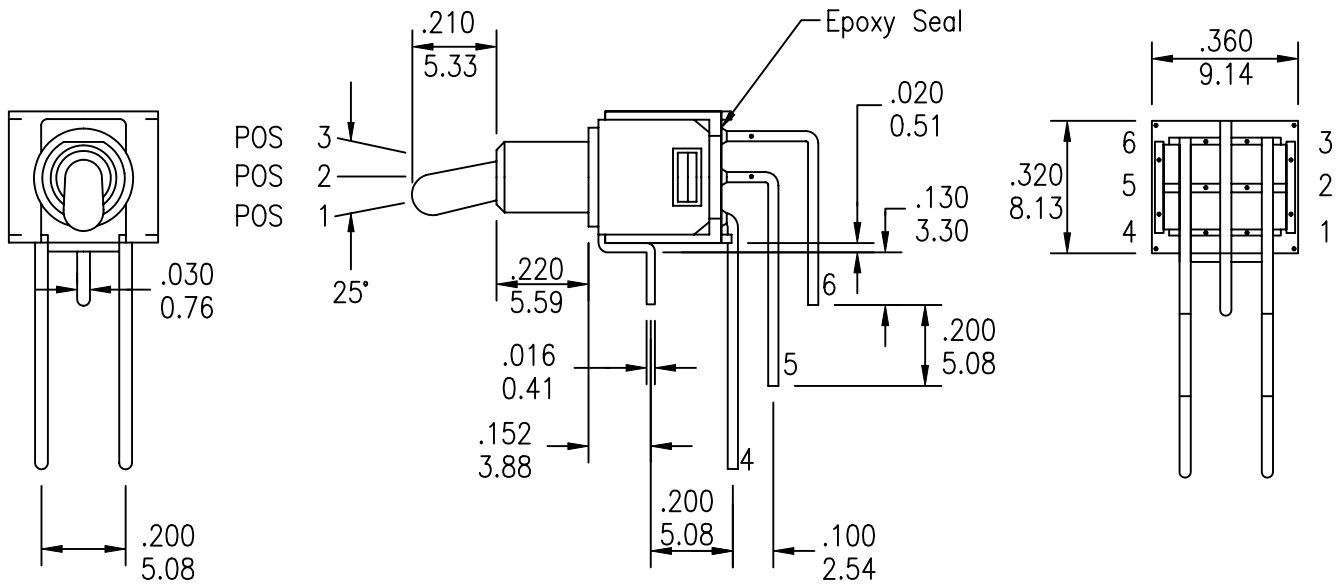


UNLESS OTHERWISE SPECIFIED, ALL DIMENSIONS ARE IN INCHES [MM].

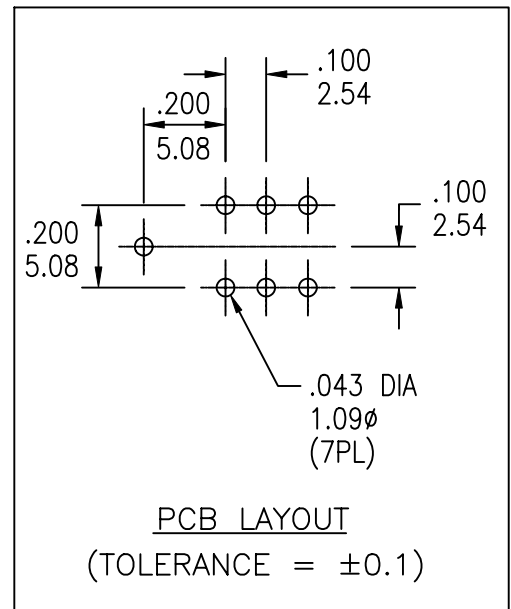
TO 1 DECIMAL PLACE ±.2
 TO 2 DECIMAL PLACES ±.10
 AS ANGLES ±

| | |
|-------|----------|
| ISSUE | DATE |
| A | 03/13/01 |



| MODEL NO. | SWITCHING POSITION | | |
|-------------|--------------------|------|------------|
| | | | |
| TS9 | ON | NONE | ON |
| TS9A | ON | OFF | ON |
| TS9B | ON | NONE | MOM |
| CONN. TERMS | 2-3 5-6 | OPEN | 2-1 5-4 |
| SCHEMATIC | | | |

NON-SHORTING TYPE



UNLESS OTHERWISE SPECIFIED, ALL DIMENSIONS ARE IN INCHES [MM].

TO 1 DECIMAL PLACE ±.2
 TO 2 DECIMAL PLACES ±.10
 AS ANGLES ±

| | |
|-------|----------|
| ISSUE | DATE |
| A | 03/13/01 |

SPECIFICATIONS

ELECTRICAL

CONTACT RATING:

SILVER: 3A @ 120 VAC OR 28 VDC, 1A @ 250 VAC

GOLD: 0.4 VA MAX. @ 20 V MAX. (AC OR DC)

CONTACT RESISTANCE: 20 MILLIOHMS MAX.

INSULATION RESISTANCE: 1,000 MEGOHMS MIN. AT 500 VDC

DIELECTRIC STRENGTH: 1,000 VRMS

MECHANICAL

LIFE: 30,000 CYCLES

ENVIRONMENTAL

OPERATING TEMPERATURE: -30°C TO +85°C

MATERIAL

CASE: DAP, UL 94V-0

HOUSING: STAINLESS STEEL

ACTUATOR: BRASS, CHROME PLATED

BUSHING: BRASS, NICKEL PLATED

SUPPORT: BRASS, TIN PLATED

CONTACT/TERMINALS: COPPER ALLOY, SILVER OR GOLD PLATED

REGULATORY

UL AND CANADA RECOGNIZED COMPONENT. UL/CUL FILE NO. E173084.

| SERIES | MODEL NO. | ACTUATOR | BUSHING | TERMINATION | CONTACT PLATING | SEAL |
|--------|-------------------------|-----------------------------|---|--------------|------------------------|--------------------|
| SRST | - [] [] [] [] [] - | [] | [] | [] | [] | [] |
| | TS9 TS9A TS9B | S (STD) T U V X | E (STD - THD) E1 (STD - NON-THD) F (THD) F1 (NON-THD) G (THD) G1 (NON-THD) H (THD) H1 (NON-THD) J (THD) J1 (NON-THD) | C (PC MOUNT) | Q (SILVER) R (GOLD) | BLANK E (EPOXY) |



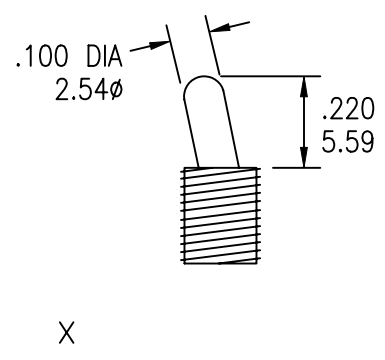
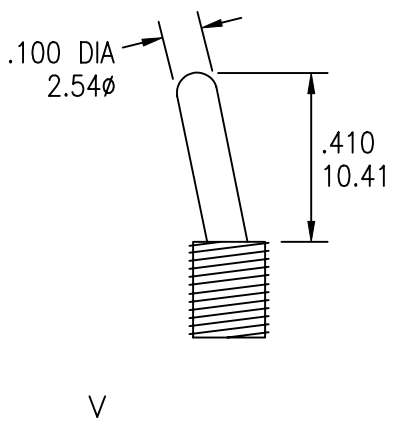
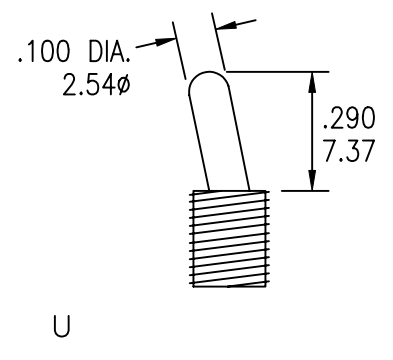
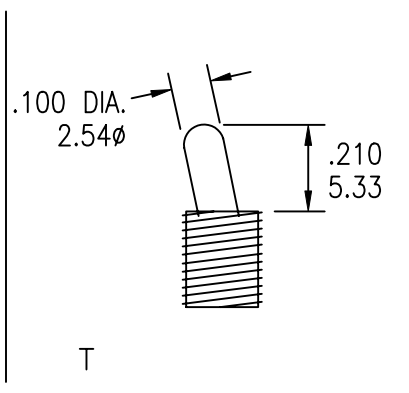
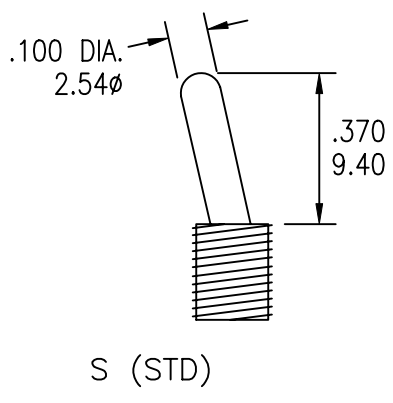
| | | | | |
|-------------------------|--------------|-----------------------------|---------------|------------------|
| TITLE: TOGGLE SWITCH | | PART NO: SRST-TS9X-XXXXX | | |
| DATE: 03/13/01 | DRAWN: RB | CHKD: | SCALE: N/A | SHEET: 2 OF 5 |

UNLESS OTHERWISE SPECIFIED, ALL DIMENSIONS ARE IN INCHES [MM].

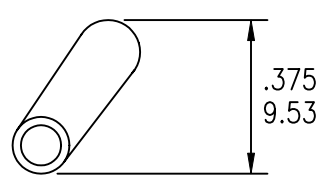
TO 1 DECIMAL PLACE ±.2
 TO 2 DECIMAL PLACES ±.10
 AS ANGLES ±

| | |
|-------|----------|
| ISSUE | DATE |
| A | 03/13/01 |

ACTUATOR OPTIONS



NOTE: OPTIONAL TOGGLE CAP AVAILABLE.

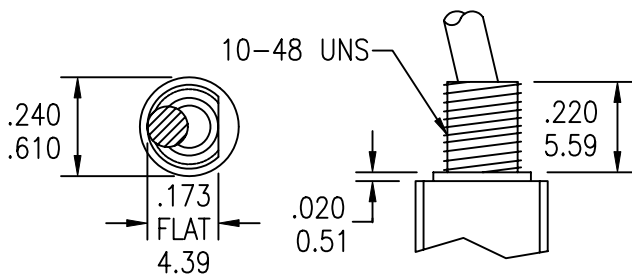


UNLESS OTHERWISE SPECIFIED, ALL DIMENSIONS ARE IN INCHES [MM].

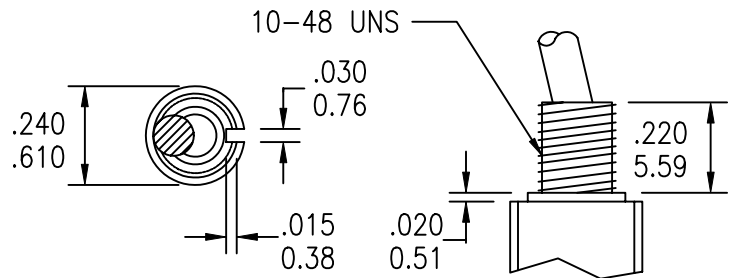
TO 1 DECIMAL PLACE ±.2
 TO 2 DECIMAL PLACES ±.10
 AS ANGLES ±

| | |
|-------|----------|
| ISSUE | DATE |
| A | 03/13/01 |

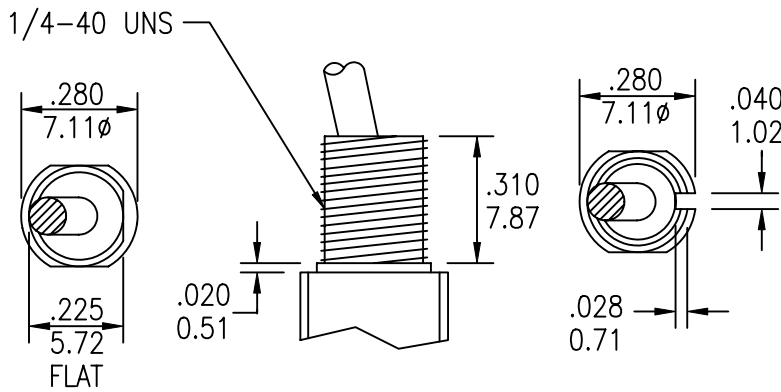
BUSHING OPTIONS



E (STD THD)
 E1 (STD NON-THD)

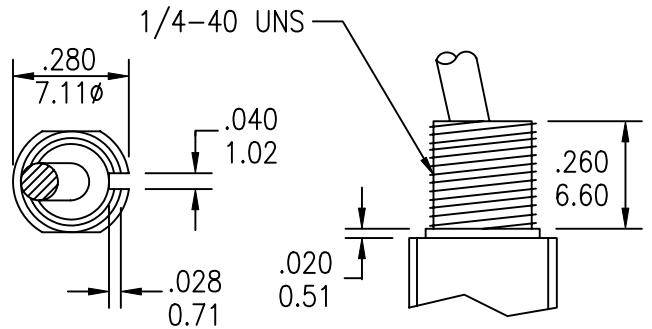


F (THD)
 F1 (NON-THD)



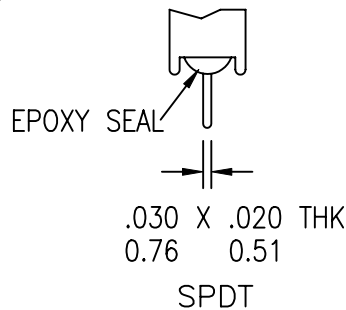
G (THD)
 G1 (NON-THD)

H (THD)
 H1 (NON-THD)

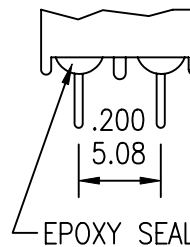


J (THD)
 J1 (NON-THD)

TERMINATION



SPDT



DPDT

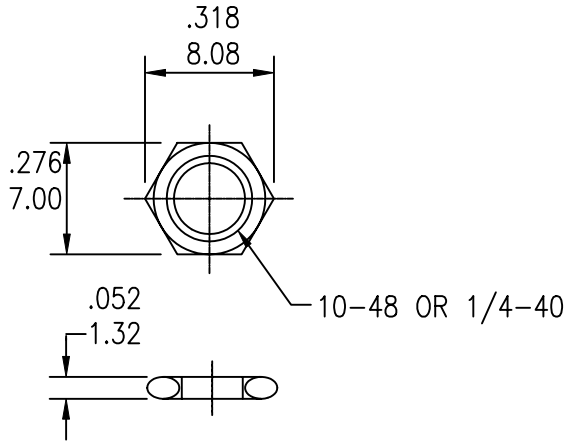
C (PC MOUNT)

UNLESS OTHERWISE SPECIFIED, ALL DIMENSIONS ARE IN INCHES [MM].

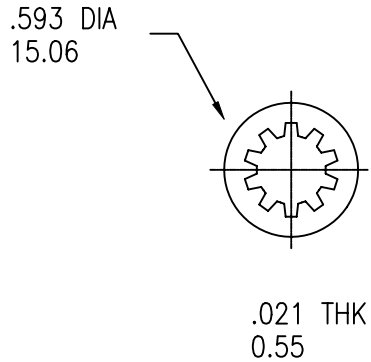
TO 1 DECIMAL PLACE ±.2
 TO 2 DECIMAL PLACES ±.10
 AS ANGLES ±

| | |
|-------|----------|
| ISSUE | DATE |
| A | 03/13/01 |

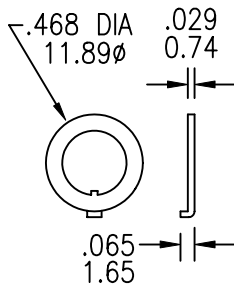
STANDARD NUT



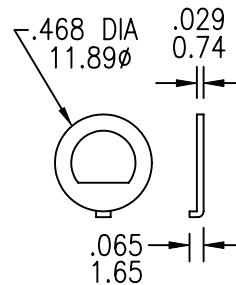
STANDARD LOCK WASHER



LOCKING RING

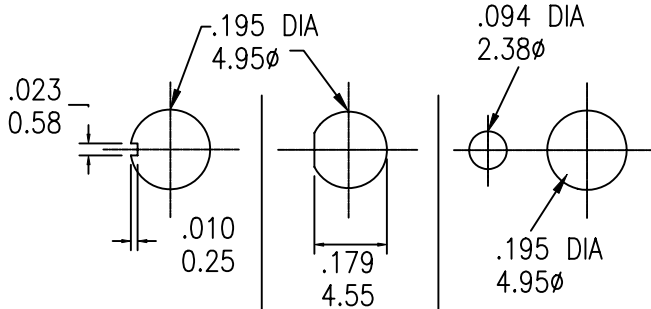


STD FOR F, F1, H, H1, J, AND J1 OPTIONS.



STD FOR E, E1, G, AND G1 OPTIONS.

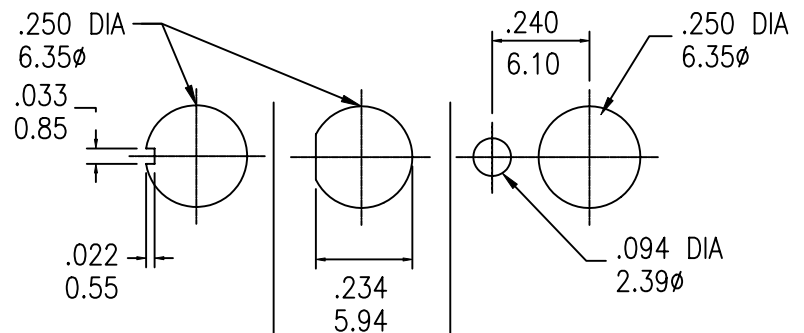
PANEL MOUNTING



FOR F AND F1 OPTIONS

FOR E AND E1 OPTIONS

FOR USE WITH LOCKING RING



FOR H, H1, J, AND J1 OPTIONS

FOR G AND G1 OPTIONS

FOR USE WITH LOCKING RING