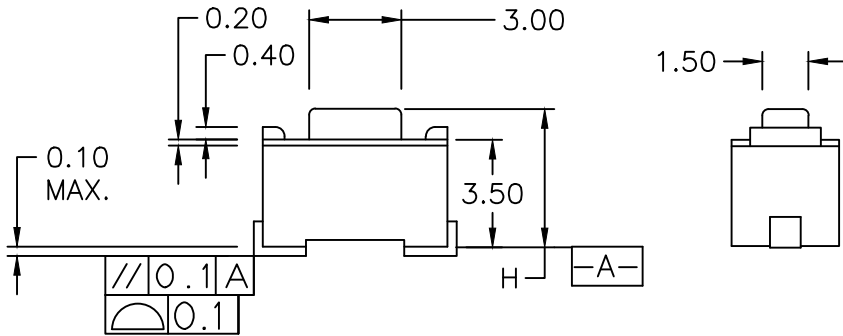
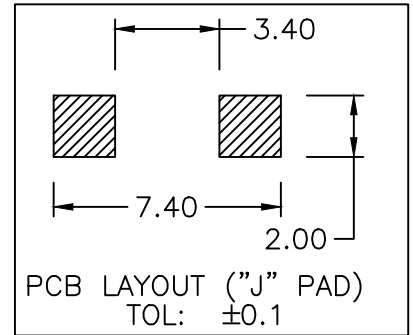
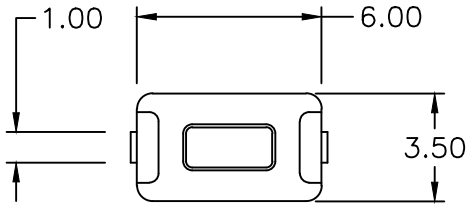


UNLESS OTHERWISE SPECIFIED, ALL DIMENSIONS ARE IN METRIC.

TO 1 DECIMAL PLACE ±.3
 TO 2 DECIMAL PLACES ±0.12
 AS ANGLES ±1/2°

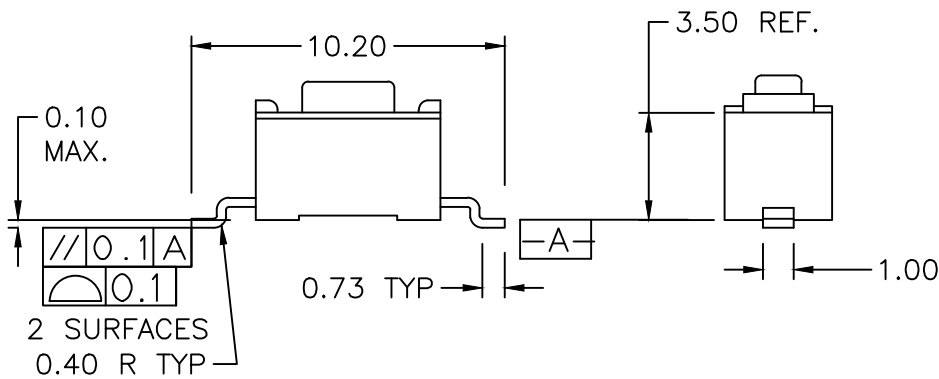
ISSUE	DATE
B	08/01/00
C	10/16/12



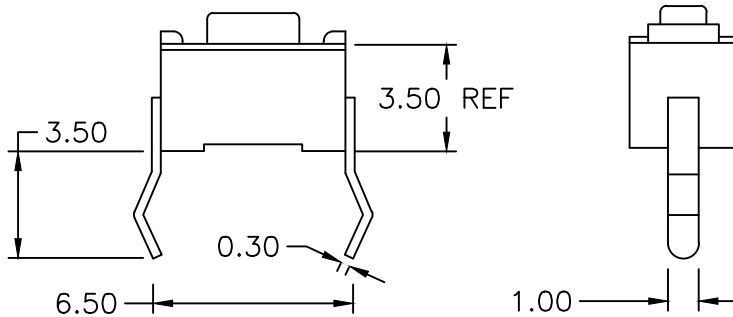
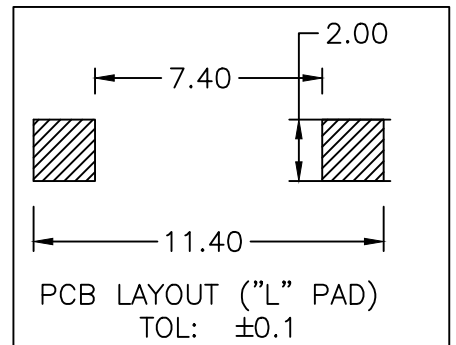
2 SURFACES
SURFACE MOUNT "J" PAD

NOTES:

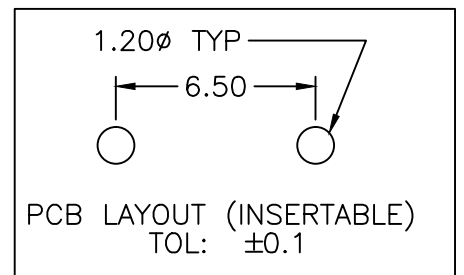
SEE SHEET 2 FOR DIM. 'H'
 PLUNGER TRAVEL- 0.25 +0.20
 -0.10



2 SURFACES
0.40 R TYP.
SURFACE MOUNT "L" PAD
SAME AS ABOVE EXCEPT AS SHOWN



INSERTABLE TYPE
SAME AS ABOVE EXCEPT AS SHOWN



TITLE: TACT SWITCH		PART NO: SRT-KRS-0310-XXX		
DATE: 04/27/99	DRAWN: RB	CHKD:	SCALE: 3/1	SHEET: 1 OF 2

UNLESS OTHERWISE SPECIFIED, ALL DIMENSIONS ARE IN METRIC.

TO 1 DECIMAL PLACE ±
 TO 2 DECIMAL PLACES ±
 AS ANGLES ±

ISSUE	DATE
B	08/01/00
C	10/16/12

SPECIFICATIONS

ELECTRICAL

CONTACT RATING: 50mA AT 12 VDC
 CONTACT RESISTANCE: 100 MILLIOHMS MAX. DC RESISTANCE
 INSULATION RESISTANCE: 100 MILLIOHMS MIN. AT 100 VDC
 DIELECTRIC STRENGTH: 250 VAC FOR 1 MINUTE

MECHANICAL

OPERATING LIFE: 60,000 CYCLES

MATERIAL:

FRAME: STEEL TIN PLATED 100 MICROINCHES MIN. OR STAINLESS STEEL
 HOUSING: NYLON 6/6 G30 UL94HB, BLACK OR NYLON 4/6 G30 UL94V-0, BLACK FOR SMT
 ACTUATOR: NYLON 6/6 G30 UL94HB, BLACK OR NYLON 4/6 G30 UL94V-0, BLACK FOR SMT
 CONTACT: STAINLESS STEEL
 TERMINAL: 0.3MM BRASS, SILVER PLATED

ENVIRONMENTAL

OPERATING TEMPERATURE: -30°C TO +85°C
 STORAGE TEMPERATURE: -40°C TO +85°C
 SOLDERING TEMPERATURE:
 WAVE SOLDERING (THRU HOLE): 255°C FOR 5 SEC.
 REFLOW SOLDERING (SURFACE MOUNT): 285°C FOR 5 SEC.
 VIBRATION RESISTANCE: MIL-STD-202 METHOD 201.PASS

				D	100 ± 30 gf
L	SMT L PAD	-	-	C	260 ± 30 gf
J	SMT J PAD	B	5.0	B	160 ± 30 gf
I	INSERTABLE	A	4.3	A	120 ± 30 gf
1ST X	MOUNTING OPTION	2ND X	H(MM)	3RD X	OPERATING FORCE



TITLE: TACT SWITCH		PART NO: SRT-KRS-0310-XXX			
DATE: 04/27/99	DRAWN: RB	CHKD:	SCALE:	SHEET: 2 OF 2	