

1

2

3

4

COMPONENT SPECIFICATION

USE OR REPRODUCTION OF THIS DRAWING FOR THE PURPOSE OF MANUFACTURING THIS ARTICLE OR ANY ARTICLES SHOWN FOR ANY PURPOSE IS STRICTLY PROHIBITED WITHOUT WRITTEN PERMISSION FROM SENIOR INDUSTRIES, INC.

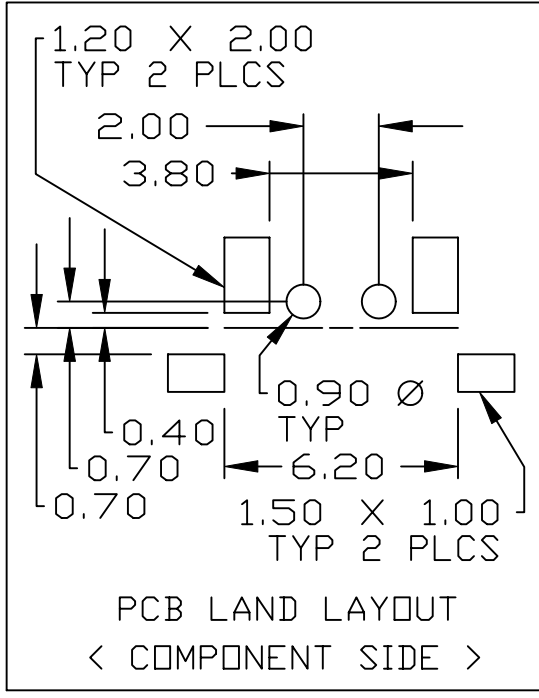
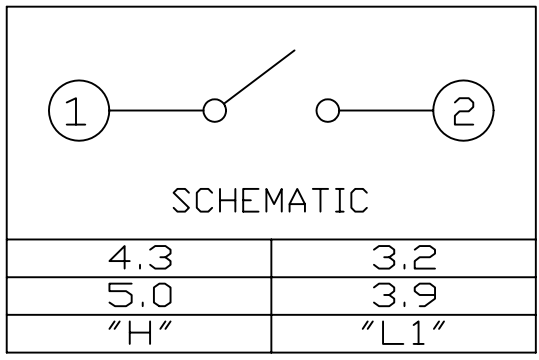
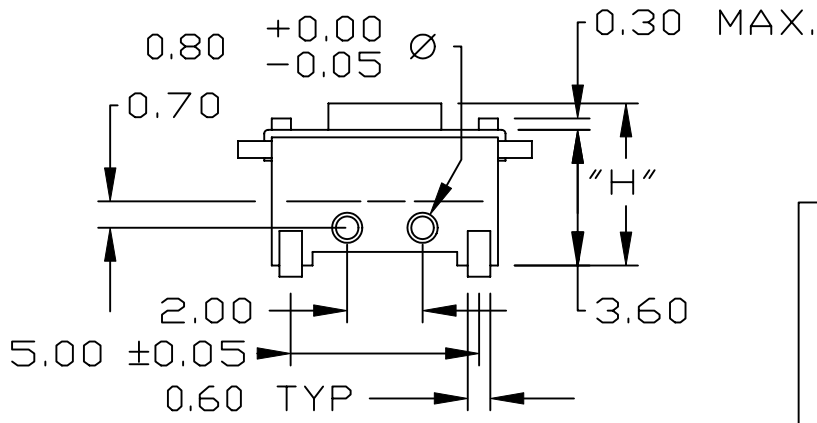
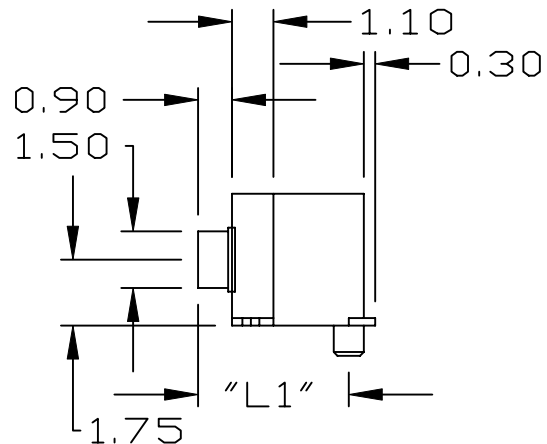
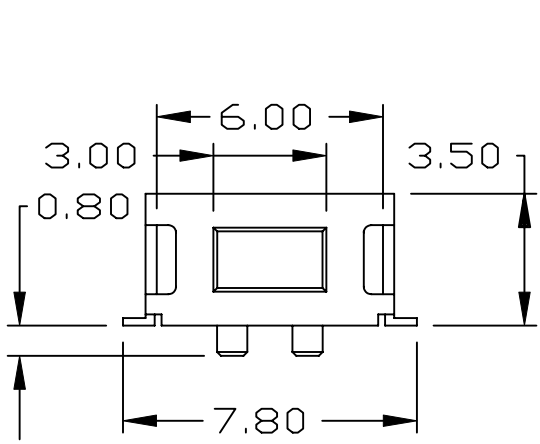
A

B

C

D

E



DESIGNED:			SYM.	DATE	DESCRIPTION OF REVISIONS	DRAWN	APPD.
DRAWN:	HV	12/09/99	▲	12.09.99	NEW	RB	JF
CHECKED:	TF	12/09/99	▲	07.19.05	New Index, Corr Operating Life from 500k to 40K	GAT	JF
APPROVED:	JF	12/09/99	▲	.			
			▲	.			

3RD ANGLE		UNIT:	mm	SCALE:	3:1	REV.	B
-----------	--	-------	----	--------	-----	------	---



TOLERANCE:	PART NO:
TO 1 DECIMAL PLACE: ±.3	SRT-KRS-0350-XXX
TO 2 DECIMAL PLACES: ±.13	TITLE:
AS ANGLES: ±1/2°	TACT SWITCH
SHEET:	1 OF 2

1

2

3

4

COMPONENT
SPECIFICATIONUSE OR REPRODUCTION OF THIS DRAWING FOR THE PURPOSE OF MANUFACTURING THIS
ARTICLE OR ANY ARTICLES SHOWN FOR ANY PURPOSE IS STRICTLY PROHIBITED WITHOUT
WRITTEN PERMISSION FROM SENIOR INDUSTRIES, INC.SPECIFICATIONSELECTRICAL:

CONTACT RATING: 50mA AT 12 VDC
 CONTACT RESISTANCE: 100 MILLIOHMS MAX. DC RESISTANCE
 INSULATION RESISTANCE: 100 MEGOHMS MIN. AT 500 VDC
 DIELECTRIC STRENGTH: 250 VAC FOR 1 MINUTE

MECHANICAL:

OPERATING LIFE: 40,000 CYCLES
 OPERATING FORCE: SEE TABLE
 TRAVEL: 0.2 +0.1 / -0

MATERIAL:

FRAME: STEEL TIN PLATED 100 MICROINCHES MIN. OR
 STAINLESS STEEL
 HOUSING: NYLON 6/6 G30 UL94HB, BLACK OR NYLON 4/6
 G30 UL94V-0, BLACK FOR SMT
 ACTUATOR: NYLON 6/6 G30 UL94HB, BLACK OR NYLON 4/6
 G30 UL94V-0, BLACK FOR SMT
 CONTACT: STAINLESS STEEL
 TERMINAL: 0.3MM BRASS, SILVER PLATED

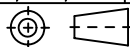
ENVIRONMENTAL:

OPERATING TEMPERATURE: -20°C TO +70°C
 STORAGE TEMPERATURE: -30°C TO +70°C
 SOLDERING TEMPERATURE:
 WAVE SOLDERING (THRU HOLE): 255°C FOR 5 SEC.
 REFLOW SOLDERING (SURFACE MOUNT): 285°C FOR 5 SEC.
 VIBRATION RESISTANCE: MIL-STD-202 METHOD 201.PASS

L	SMT L PAD	-	-	C	280 ± 30 gf
J	SMT J PAD	B	5.0	B	160 ± 30 gf
I	INSERTABLE	A	4.3	A	120 ± 30 gf
1ST X	MOUNTING OPTION	2ND X	H(MM)	3RD X	OPERATING FORCE

DESIGNED:			SYM.	DATE	DESCRIPTION OF REVISIONS	DRAWN	APPD.
			▲	12.09.99	NEW	RB	JF
DRAWN:	HV	12/09/99	▲	07.19.05	New Index, Corr Operating Life from 500k to 40K	GAT	JF
CHECKED:	TF	12/09/99	▲	.			
APPROVED:	JF	12/09/99	▲	.			

3RD ANGLE



UNIT:

mm

SCALE:

REV.

B


**SENIOR
INDUSTRIES, INC.**

TOLERANCE:

TO 1 DECIMAL PLACE: ±

TO 2 DECIMAL PLACES: ±

AS ANGLES: ±

SHEET:

PART NO:

SRT-KRS-0350-XXX

TITLE:

TACT SWITCH

2 OF 2