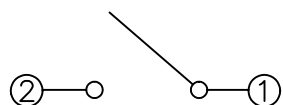
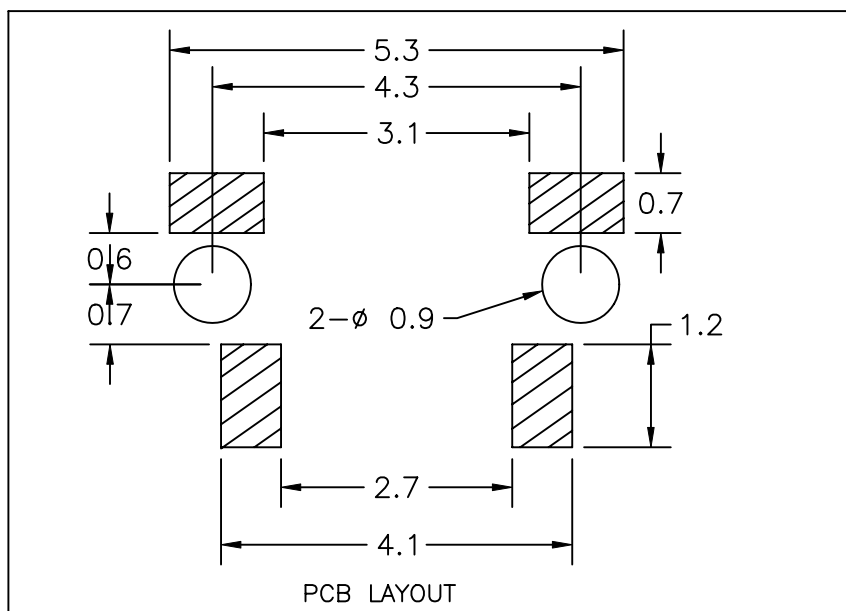
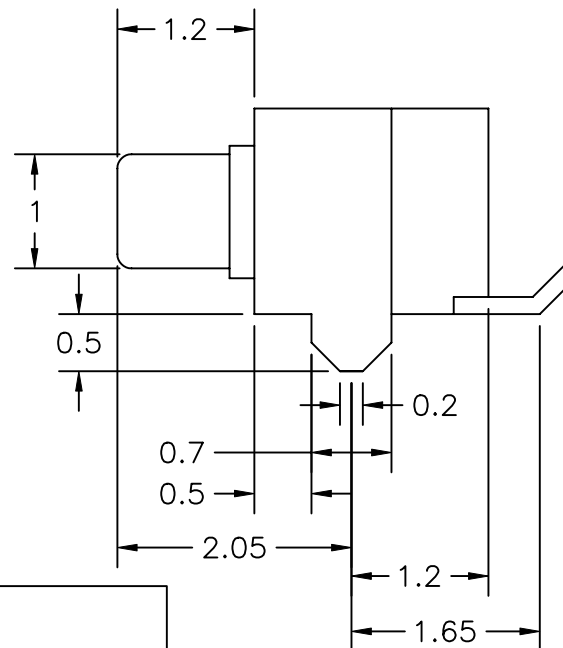
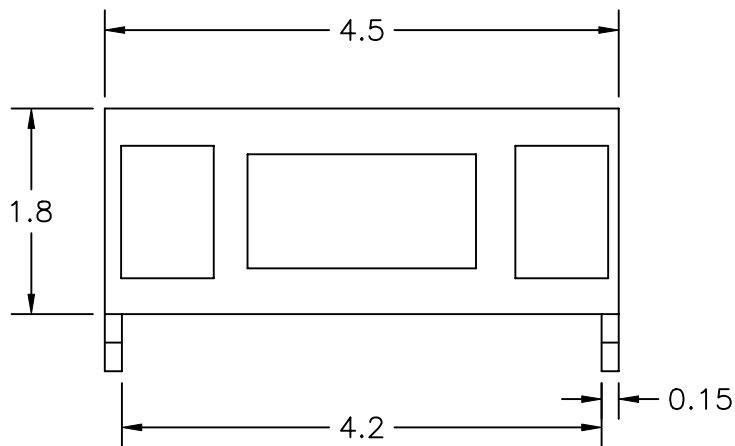


UNLESS OTHERWISE SPECIFIED, ALL DIMENSIONS ARE IN METRIC.

TO 1 DECIMAL PLACE  
TO 2 DECIMAL PLACES ±.3  
AS ANGLES ±1/2°

ISSUE  
A

DATE  
01/12/04



SCHEMATIC

**SR** SENIOR INDUSTRIES, INC.

TITLE: TACT SWITCH

PART NO: SRT-KRS-0351

DATE: 01/12/04

DRAWN: RB

CHKD:

SCALE: 6:1

SHEET: 1 OF 2

UNLESS OTHERWISE SPECIFIED, ALL DIMENSIONS ARE IN METRIC.

TO 1 DECIMAL PLACE  
TO 2 DECIMAL PLACES ±.3  
AS ANGLES ±1/2°

ISSUE

DATE

A

01/12/04

### SPECIFICATIONS

#### ELECTRICAL:

CONTACT RATING: 20mA @ 12VDC  
CONTACT RESISTANCE: 100 MILLIOHMS MAX.  
DC RESISTANCE  
INSULATION RESISTANCE: 100 MEGOHMS  
MIN. @ 500VDC  
DIELECTRIC STRENGTH: 250VAC FOR 1 MINUTE

#### MECHANICAL:

OPERATING LIFE: 100,000 CYCLES  
OPERATING FORCE: 220gf  
TRAVEL: 0.2 ±0.1mm

#### MATERIAL:

FRAME: STEEL TIN PLATED  
HOUSING: NYLON 4/6 G30 UL94V-0, BLACK  
ACTUATOR: NYLON 4/6 G30 UL94V-0, BLACK  
CONTACT: PHOSPHOR BRONZE  
TERMINAL: BRASS, SILVER PLATED

#### ENVIRONMENTAL:

OPERATING TEMPERATURE: -20°C TO +70°C  
STORAGE TEMPERATURE: -30°C TO +80°C

#### PACKAGING:

TAPE AND REEL: 3000 PIECES PER REEL



TITLE:

TACT SWITCH

PART NO:

SRT-KRS-0351

DATE:

01/12/04

DRAWN:

RB

CHKD:

SCALE:

N/A

SHEET:

2 OF 2